

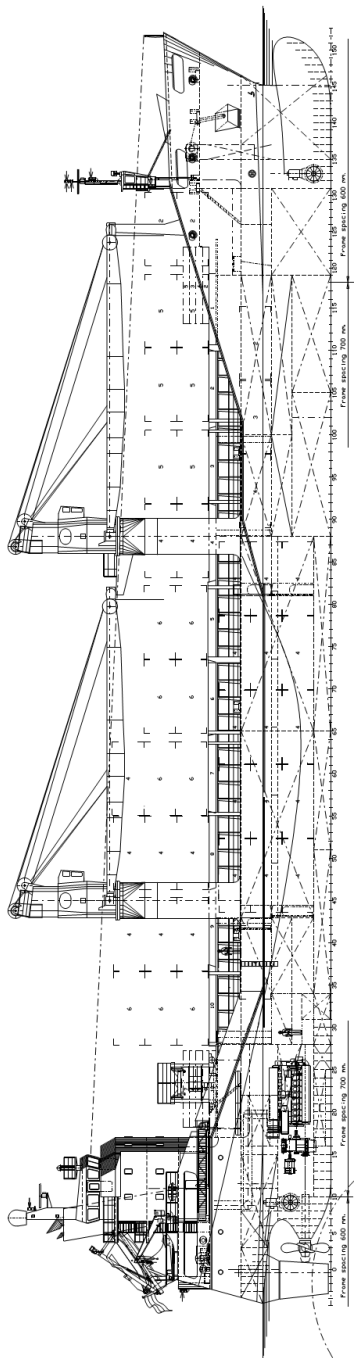
M/V 'PACIFIC DAWN'

Valid as of 07 April 2015

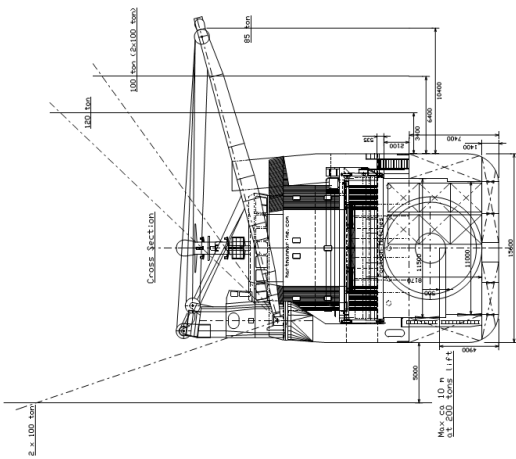
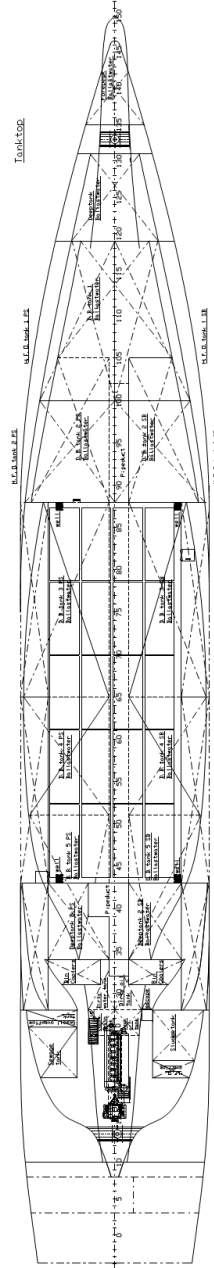
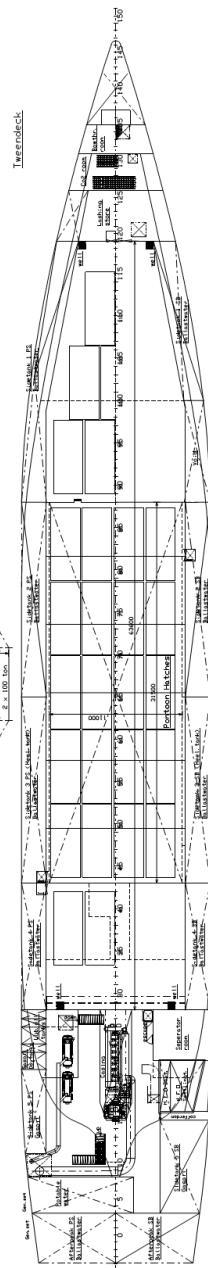
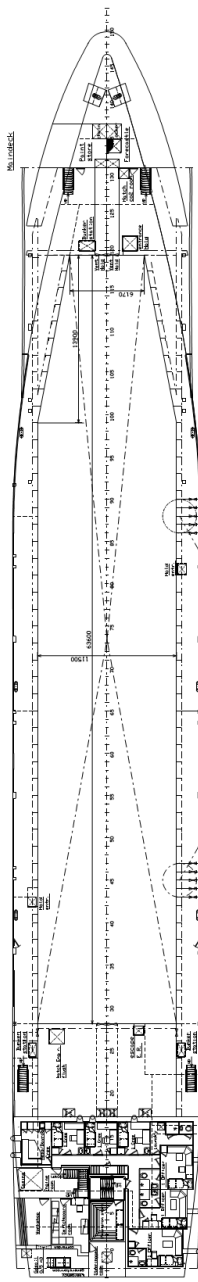
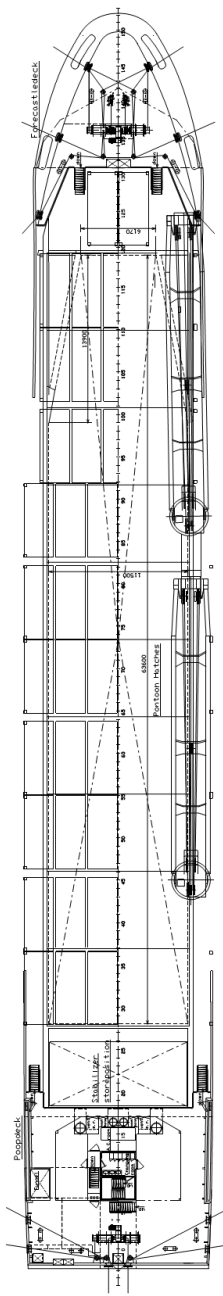


Ship's particulars

Registration	Call sign PBTM IMO number 9558464 MMSI number 245118000 Port of registry Urk Flag state The Netherlands Shipyard Hartman Marine Shipbldg. Year/Place of build 2010/Urk Class Bureau Veritas Class notation I ⊗ HULL ⊗ MACH General cargo ship, Heavy Cargo, Unrestricted Navigation, AUT ⊗ UMS	Deck loads	Tanktop 15.0 mt/m ² Tweendeck steel area 12.0 mt/m ² Tweendeck pontoons 2.5 mt/m ² Hatch covers 3.4 mt /m ²
P&I Club	British Marine	Container capacity	Hold capacity 73 TEU Deck capacity 149 TEU Stack weight TEU/FEU Tanktop: 100/122 mt Hatchcovers: 35/54 mt Reefer capacity 2 reefer plugs on deck 2 reefer plugs below deck
Tonnage	DWAT 3500 mt (summer draught) DWCC Abt. 2700 mt Gross tonnage 2981 Net tonnage 1199	Hatchcovers/Tweendecks	Type of hatchcovers Pontoon hatches Tweendeck pontoons 6 removable pontoons Removable bulkheads Made of 2 TD pontoons
Dimensions	Length over all 105.10 m Length between p.p. 98.20 m Breadth over all 15.60 m Summer draught 5.82 m Depth moulded 7.40 m Depth to upper deck 10.00 m Height from keel to top mast 26.50 m	Propulsion/Maneuvering	Main engine Wärtsilä 8L32 Propeller type Variable pitch Main engine output 3680 kW Bow thruster 300 kW Stern thruster 250 kW Service speed 16.5 kn
Hold/hatches sizes	Number of holds/hatches 1/1 Hold capacity without tweendeck Abt. 4.395 m ³ /155.192 ft ³ Hold capacity with tweendeck Abt. 4.215 m ³ /148.860 ft ³ Lower hold dimensions 31.40 x 11.00 m Tweendeck dimensions 63.60 x 11.50 m Weather deck dimensions 74.00 x 15.40 m Hold height 8.15 m (hold prepared for cable reels up to Ø 8.50 m) Tanktop/Tweendeck height 3.00/4.65 m	Bunkers/Water capacity	HFO 408 m ³ MGO 85 m ³ LO 16 m ³ Fresh water 50 m ³ Ballast water 2534 m ³
	Tanktop floor surface 345 m ² Tweendeck deck floor surface 694 m ² Weatherdeck floor surface 950 m ²	Cargo gear	Cranes on starboard side 2 x Liebherr WLL 120 mt cranes on starboard side Load/Outreach 120 mt in 3.50-16.0 m 100 mt in 3.50-20.0 m 80 mt in 3.50-24.0 m Tandem load Up to 240 mt
	Tweendeck narrowing in fore part.	<i>All details are believed to be correct but without guarantee.</i>	
OCEAN7 Projects ApS Sdr. Havnegade 36 DK-6000 Kolding Denmark Phone: +45 7070 1311 E-mail: denmark@ocean7projects.com			



18 700
22 700
26 700
30 700
34 700
38 700



MAIN PARTICULARS

Length over all	195.10 m.
Length between perpendiculars	98.20 m.
Breadth moulded	15.60 m.
Breadth at summer freshboard	5.815 m.
Corros. Resistance	2500 t.
Capacity:	
Hold	15000 cu. ft.
Ballastwater	2500 m ³ .
Fuel	50 m ³ .
Stores	2000 m ³ .
Cabinets in hold	73 TEU
on Deck	124 TEU
Totals	197 TEU
Tonnage	3000 GT

CONOSHIP
GENERAL ARRANGEMENT - THE HULL

Scale	1:100	1:200	1:500	1:1000	1:2000	1:5000	1:10000
Sheet No.							
Project No.							
Drawn by							
Checked by							
Approved by							