

M/V 'OCEANIC'

Valid as of 23 December 2016



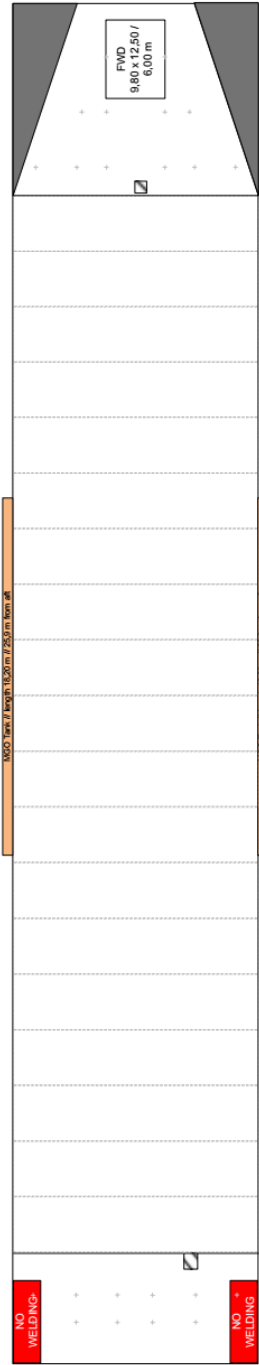
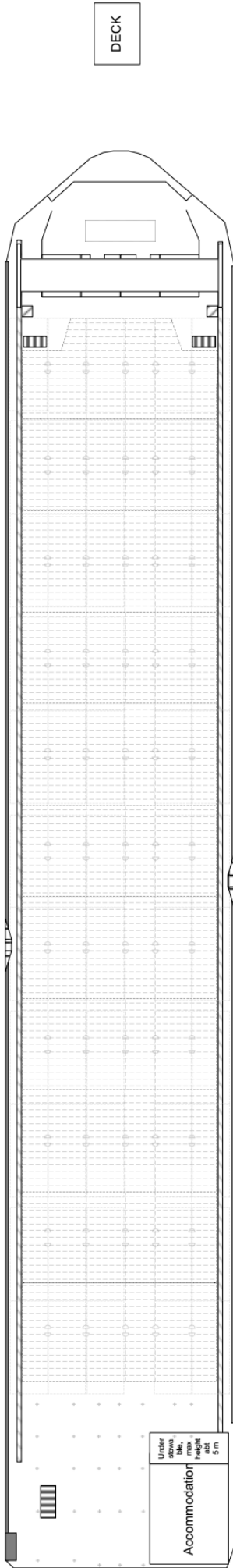
Ship's particulars

Registration		Deck loads	
Call sign	PBYH	Tanktop	15.0 mt/m ²
IMO number	9624550	Tweendeck steel area	12.0 mt/m ²
Port of registry	Urk	Tweendeck panels	2.5 mt/m ²
Flag state	The Netherlands	Hatch covers	3.5 mt /m ²
Shipyard	Shipkits Yard		
Year/Place of build	2012/Groningen	Container capacity	
Class	Bureau Veritas	Hold & deck capacity	304 TEU
Class notation	I ✕ HULL ✕ MACH		
	General cargo ship, Heavy Cargo, Unrestricted Navigation, ✕ AUT-UMS	Hatchcovers/Tweendecks	
	Approved for open top	Type of hatchcovers	Pontoon hatches
	IMO fitted under deck	Tweendeck panels	6 removable panels
	Grain fitted		
		Propulsion/Maneuvering	
P&I Club	RaetsMarine	Main engine	Wärtsilä 6L20
		Propeller type	Variable pitch
Tonnage		Main engine output	1200 kW
DWAT	3400 mt (summer draught)	Bow thruster	300 kW
DWCC	Abt. 3100 mt	Stern thruster	250 kW
Gross tonnage	2989	Service speed	11.0 kn
Net tonnage	896		
		Bunkers/Water capacity	
Dimensions		MGO	230 m ³
Length over all	92.90 m	Fresh water	73 m ³
Length between p.p.	84.99 m	Ballast water	1770 m ³
Breadth over all	15.00 m		
Summer draught	5.00 m		
Depth main deck/upper deck	5.50 m/10.00 m		
Height from keel to top mast	28.47 m		
Hold/hatches sizes			
Number of holds/hatches	1/1		
Hold capacity without tweendeck	Abt. 6.197 m ³ /218.862 ft ³		
Lower hold dimensions	53.90 x 12.00 m		
Tweendeck dimensions	69.30 x 12.50 m		
Weather deck dimensions	87.00 x 15.00 m (except accommodation)		
Hold height	8.30 m		
Tanktop/Tweendeck height	3.20/4.60 m		
Tanktop floor surface	647 m ²		
Tweendeck deck floor surface	866 m ²		
Weatherdeck floor surface	1264 m ²		
	Tanktop narrowing in fore and aft part.		
	Tweendeck narrowing in fore part.		

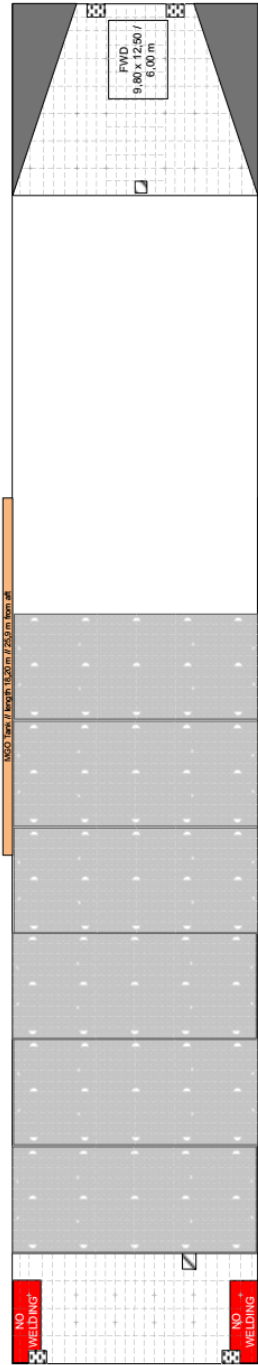
All details are believed to be correct but without guarantee.

OCEAN7 Projects ApS
Sdr. Havnegade 36
DK-6000 Kolding
Denmark

Phone: +45 7070 1311
E-mail: denmark@ocean7projects.com



6 TWD pontoons on board,
length each 5,60 m
18 FIXED (UPPER)
POSITIONS in every half
two length



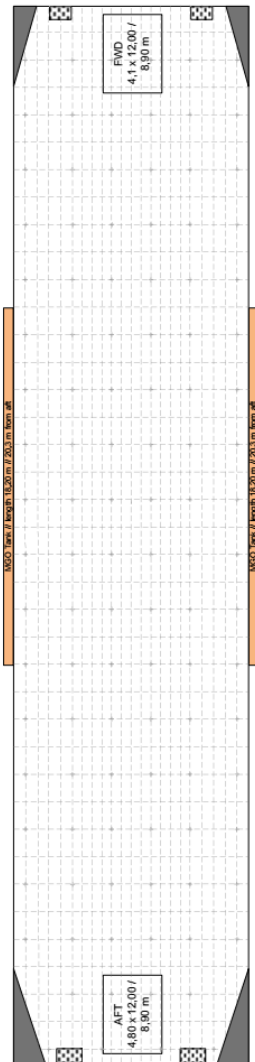
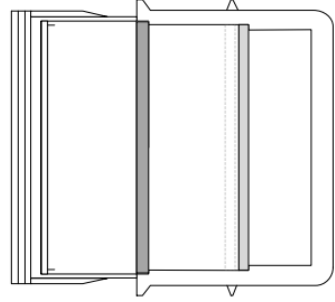
6 TWD pontoons on board,
length each 5,60 m
18 FIXED (UPPER)
POSITIONS in every half
two length

BOX over
60,40 m

5,6 m

OPTION 1
UPPER HOLD
HEIGHT 3,90 m
fwd/aft part fix at 4,60 m

OPTION 2
UPPER HOLD
HEIGHT 4,60 m
fwd/aft part fix at 4,60 m



LOWER HOLD
HEIGHT option 1 3,90 m /
HEIGHT option 2 3,20 m

BOX over
45 m