

DOCK III

MV "DOCK III": CALL SIGN: V2PX8 IMO NO: 9432828

T/C OWNERS:

OCEAN7 CHARTERING APS - DENMARK

PORT OF REGISTRY: ST. JOHNS

FLAG: ANTIGUA & BARBUDA



MAIN PARTICULARS

CLASS

GL + 100 A5E INF3 IW NAV- OC; IW; BMW- 5; STRENGTHENED FOR HEAVY CARGO, SEMI SUBMERSIBLE VESSEL; RO/RO SHIP; CONTAINER FITTED, DP 1

BUILDERS

LLOYD WERFT, BREMERHAVEN, GERMANY
JANUARY 2009

REGISTER TONNAGE

| | |
|-------|---------------|
| TYPE | INTERNATIONAL |
| GROSS | 17,341 |
| NET | 5,203 |

DIMENSIONS

| | |
|--|----------|
| LENGTH OVER ALL (BOW TO STERN) | 163.00 M |
| LENGTH OVER ALL (INCL. CRANE OVERHANG) | 169.40 M |
| LENGTH BETWEEN PP | 147.60 M |
| BREADTH MOULDED | 25.40 M |
| DESIGN DRAFT WITH OPEN HATCH | 6.60 M |
| DRAFT FULLY LOADED SUMMER | 6.60 M |
| DOCKING DRAFT | 11.00 M |

DEAD WEIGHT CAPACITIES

| | |
|-----------------------------|-----------------|
| DEAD WEIGHT AT 5,60 M DRAFT | ABT. 7,600 MTS |
| DEAD WEIGHT AT 6,60 M DRAFT | ABT. 11,000 MTS |

CONTAINER CAPACITIES

| | |
|--------------------------------|------|
| TOTAL CAPACITY 20' x 8' x 8'6" | 1383 |
| HEREOF: IN CARGO HOLD | 420 |
| ON DECK | 963 |

STACKLOAD

| | |
|---------|---------------------------------|
| TANKTOP | 100 TS EACH 20' 140 TS EACH 40' |
| DECK | 50 TS EACH 20' 65 TS EACH 40' |

HATCH (DOCKSIZE)

| | |
|-----------|---------------------------|
| BOXSHAPED | 132.00 X 18.00 M X 9.40 M |
| HATCH | 132.60 X 25.40 M |

STERNRAMP

750 MT - WIDTH 18,00 M x LENGTH 10,80 M WITHOUT FLAP / 13.80 M WITH FLAP

VESSEL CAN TRADE WITH OPEN HATCHES AND STERNRAMP.

CARGO HOLD

FITTED FOR DANGEROUS CARGO SOLAS -II-2, REG 19 DBC HOLDS
FITTED WITH SMOKE DETECTORS, CO2 SYSTEM, SPRINKLER.
PREPARED FOR MOON POOL.

CUBIC CAPACITIES IN HOLD

W/O TWEENDECK HATCH COVERS: 20900 CBM / 22800 CBM

CRANES

2 ELECTRO HYDRAULIC CRANES PORT SIDE 350 TS / 18 M & 100 TS / 26 M COMBINABLE UP TO 700 TS
1 ELECTRO HYDRAULIC CRANE PORT SIDE 200 TS / 14 M & 80 TS / 31 M

DECK STRENGTH

| | |
|------------------|-----------------|
| TANKTOP | 16.00 TS PER M2 |
| TWEENDECK - HOLD | 4.50 TS PER M2 |
| HATCH COVER | 2.55 TS PER M2 |

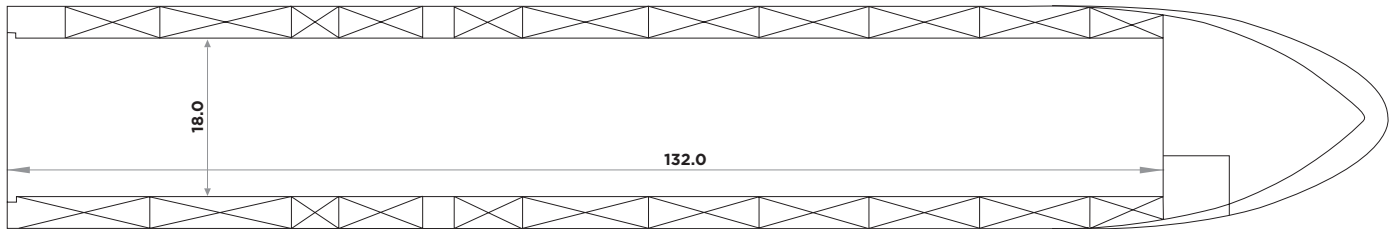
TANK CAPACITIES

| | |
|---------------|-----------------|
| FUELOIL | ABT. 1254.0 TS |
| MDO | ABT. 131.0 TS |
| FRESH WATER | ABT. 223.0 TS |
| BALLAST WATER | ABT. 17415.0 TS |

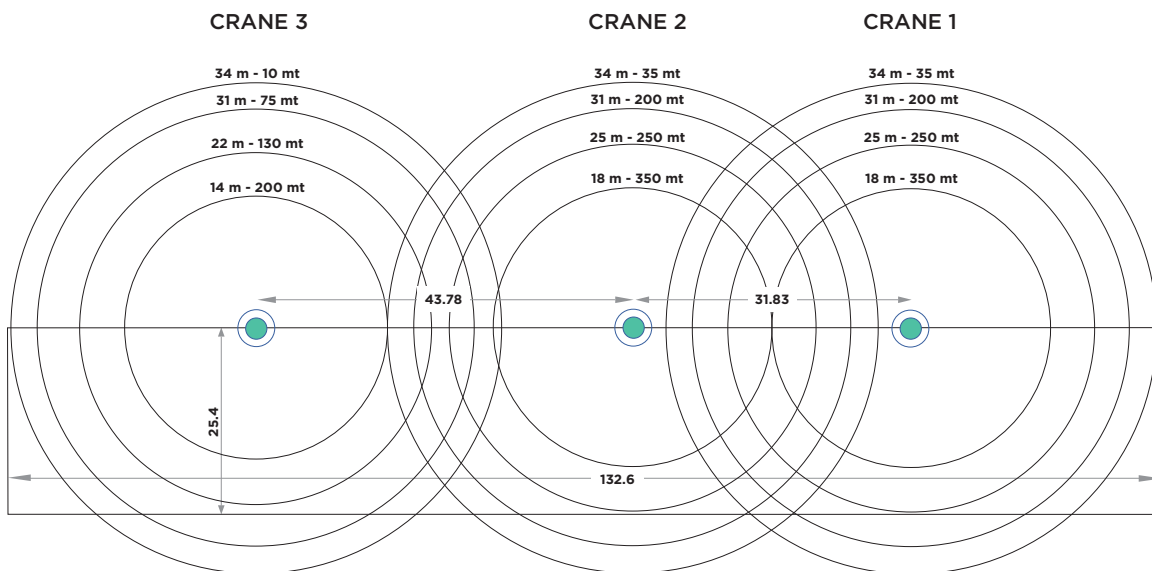
VESSEL EQUIPPED WITH TWIN SCREW AND 1X BOW THRUSTER

DOCK III

TWEEN DECK / TANKTOP



WEATHER DECK



HOLD

