



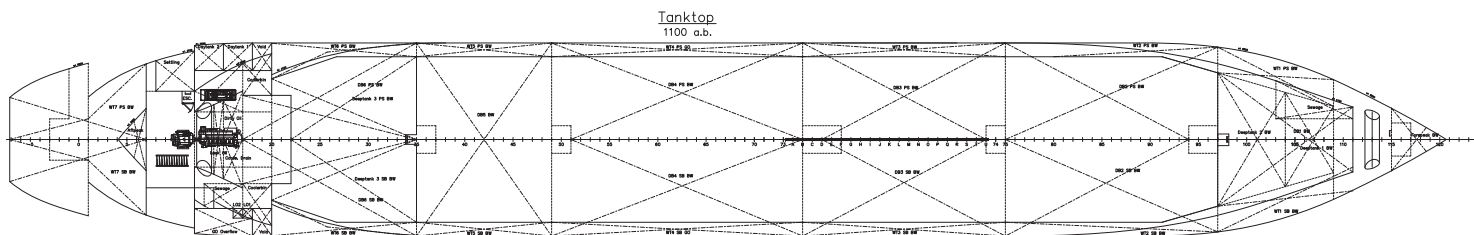
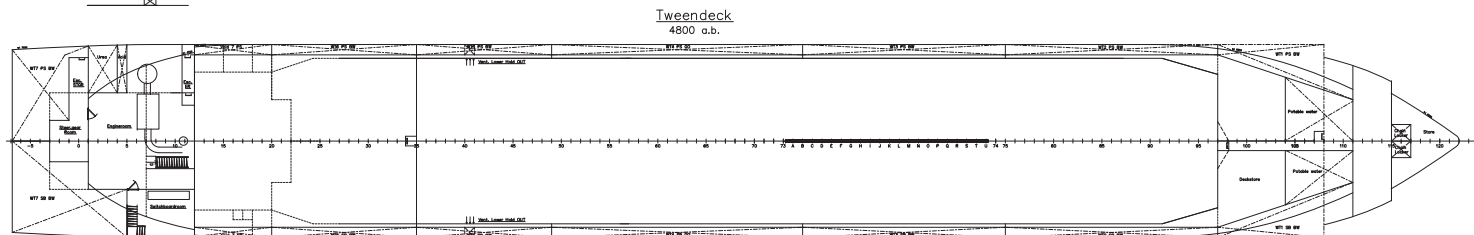
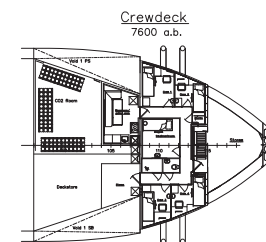
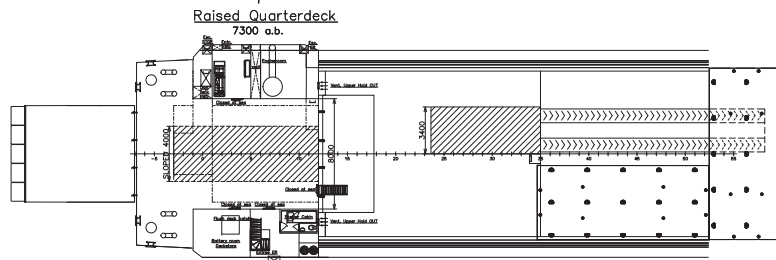
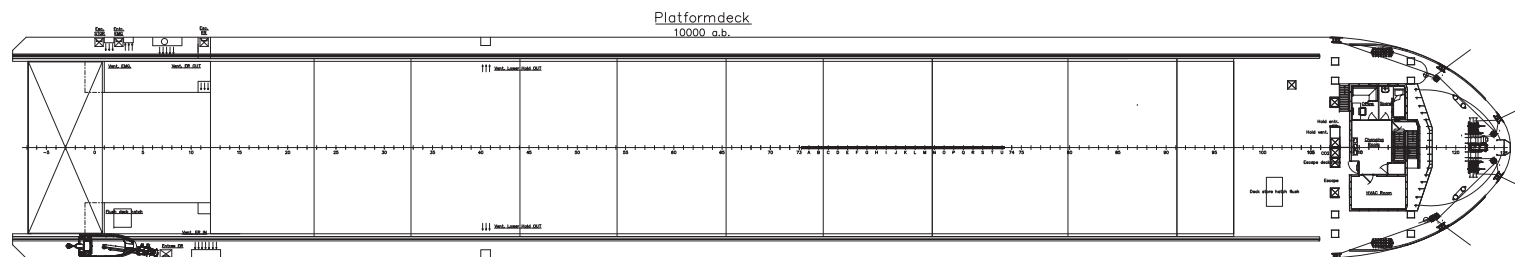
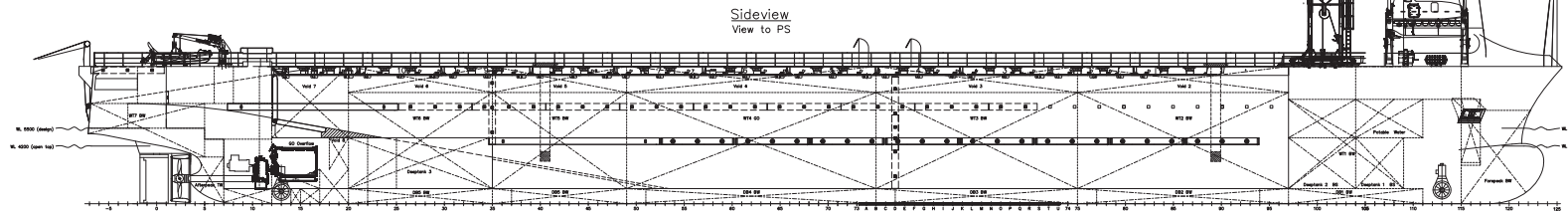
## M/V 'ADRIATIC'

Valid as of 09 Apr 2025

<b>Registration</b>	PEVT	<b>Deck loads</b>	5,0 mt/m <sup>2</sup>
Call sign	9944871	Tanktop UH	15,0 mt/m <sup>2</sup>
IMO number	Urk	Tanktop LH	5,0 mt/m <sup>2</sup>
Port of registry	The Netherlands	Tween deck	2,5 mt/m <sup>2</sup> /50 cm thick Pan.
Flag state	Hartman Marine Shipbuilding	Tween deck panels	3,5 mt/m <sup>2</sup> /80 cm thick Pan.
Shipyards	2022/Urk	Tween deck panels	3,5 mt/m <sup>2</sup> /cover
Year/Place of delivery	Bureau Veritas	Hatch cover each	
Class	I ✕HULL ✕MACH General		
Class notation	cargo ship Ro-ro cargo	<b>Hatch covers/Tween deck</b>	
	ship -heavycargo -occasional	Type of hatch covers	12 pontoon hatches
	dry bulk cargo, Unrestricted	Tween deck panels	5 pcs 50 cm thick panels
	navigation, ✕ AUT-UMS		3 pcs 80 cm thick panels
			(movable by own gantry)
P&I Club	West of England		Grain fitted
<b>Tonnage</b>		Open top condition	Possible
DWAT (closed/open)	4540/2875 mt		
DWCC (closed/open)	abt. 4250/2585 mt	<b>RoRo feature</b>	
Gross tonnage	3636	Length of ramp	4,85 m + flaps = 5,93 m
Net tonnage	1090	Width of ramp	7,00 m
		Max axel load on	
		tween deck and ramp	4 x 2 axle load 40 mt
<b>Dimensions</b>			
Length over all	107,88 m	<b>Propulsion/Maneuvering</b>	
Length between p.p.	100,55 m	Main Engine	1600 kW
Breadth over all	16,00 m	Bow thruster	332 kW
Breadth moulded	14,00 m	Stern thruster	300 kW
Summer draught	5,52 m (close top)	Propeller	Pitch with propeller nozzle
	4,20 m (open top)	Rudder	Balance rudder
Depth moulded	10,00 m	Service speed	12,5 kt
Height keel to top mast	26,40 m		
		<b>Bunkers/Ballast capacity</b>	
<b>Hold/hatch sizes</b>		Marine gas oil	233 m <sup>3</sup>
Number of holds/hatches	1/12	Fresh water	92 m <sup>3</sup>
Hold capacity	6.438 m <sup>3</sup> / 227.354 ft <sup>3</sup>	Ballast water	2558 m <sup>3</sup>
Total lane meters	1.267 m		
Lower hold dimensions	58,10 x 12,00 m	<b>Cargo gear</b>	
Upper hold dimensions	74,00 x 12,50 m	Cranes	Gearless
Deck length original	81,15 x 15,80 m		
Deck length max.	95,00 x 15,50 m		
Hold height	8,30 m		
Tween deck -> Hatch cover	2,11/3,90/4,61 m		
Tween deck -> Tank top	5,69/3,90/3,19 m (50 cm Pan)		
Tween deck-> Tank top	5,39/3,60/2,89 m (80 cm Pan)		
Hold floor surface	LH 681m <sup>2</sup> , UH 925 m <sup>2</sup>		
Deck floor surface	1450 m <sup>2</sup>		
<b>Container capacity</b>			
Hold capacity	132 TEU		
Deck capacity	240 TEU		
Total	372 TEU		
Stack weight TEU/FEU	As per deck load limit		
TEU slots for IMO class 1	On deck and 60 x 20' in CTb		
1.4S	All deck and holds		
	No IMO in open top condition		

*All details are believed to be correct but without guarantee/HWS*

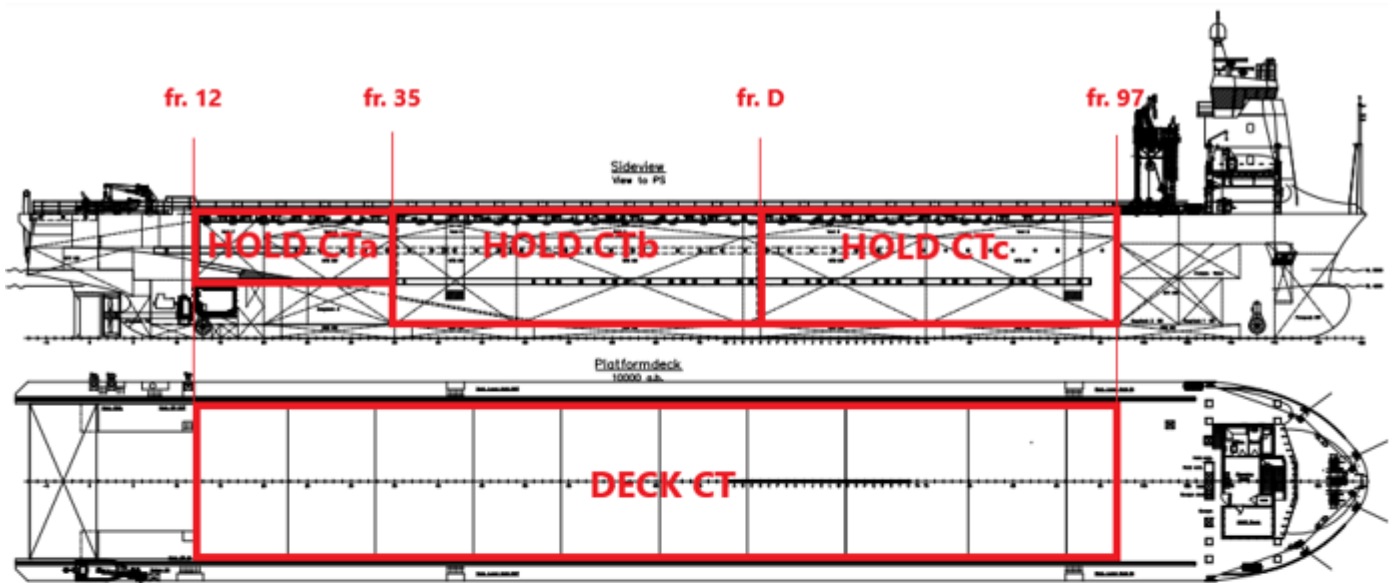
Phone: +45 70 70 13 11  
 Email: europe@ocean7projects.com  
 Web: <https://ocean7projects.com>







### General Cargo Ship



### RoRo Cargo Ship

