



Ship's particulars



M/V 'ALASKABORG'

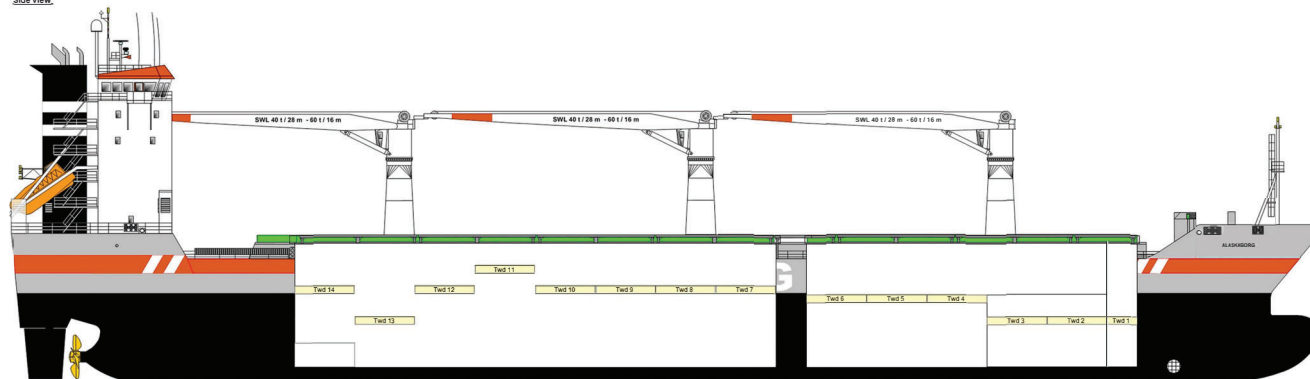
Valid as of 08 Apr 2025

Registration		Deck loads	
Call sign	PBUX	Tanktop	20,0 mt/m ²
IMO number	9466374	Tween deck pontoons	4,00 mt/m ²
Port of registry	Delfzijl	Hatch covers	1,75 mt/m ²
Flag state	The Netherlands	Hatch covers/Tween deck	
Shipyard	Hudong-Zhonghua Shipbuild	Type of hatch covers	Hydraulic: 4 and 2 + 4
Year/Place of delivery	2012/China	Tween deck pontoons	6 and 8 pontoons
Class	Lloyd's Register		Can be used as vertical bulkhead for every 20' interval.
Class notation	✕ 100A1, Streng. For Heavy Cargoes. Contr. ShipRight ACS(B), *IWS, LI	Propulsion/Manoeuvring	
	Ice class 1A (Finnish/Swedish)	Main Engine	7.500 kW
	Min draft 4.20 x 5.60 m	Bow thruster	750 kW
	✕LMC UMS NAV1 BWTS*		
P&I Club	NorthStandard EU DAC	Propeller	CPP
		Rudder	Semi-balanced
Tonnage		Service speed	14,0 kn
DWAT	17.294 mt	Bunkers/Ballast capacity	
DWCC	Abt. 15.700 mt	VLSFO	1.350 m ³
Gross tonnage	11.885	MGO	215 m ³
Net tonnage	5.644	Fresh water	280m ³
		Ballast water	5.490 m ³
Dimensions		Cargo gear	
Length over all	142,91 m	Cranes on port side	3 x Liebherr x 60 mt SWL
Length between p.p.	133,36 m	Load/Outreach	40 mt/28,00 m
Breadth over all	21,50 m		60 mt/16,00 m
Breadth moulded	21,50 m	Tandem load	120 mt SWL
Summer draught	9,69 m		
Depth moulded	13,31 m	Lifting beam on board	One 11 mtr 2x60 mt WLL
Height keel to top mast	41,20 m		
Hold/hatch sizes			
Number of holds/hatches	2/2		
Hold capacity	About 20.038 m ³ /707.633 ft ³		
# 1 hold dimensions	35,86 x 17,75 m (7,78 m fwd)		
# 2 hold dimensions	52,16 x 17,75 m (13,50 m aft)		
Weather deck dimensions	92,30 x 17,75 m		
Heights			
Hold	13,50 m		
TD Upper pos. (above/below)	2,45/10,15 m (excl. forep. #1)		
TD Mid pos. (above/below)	4,65/7,95 m		
TD Lower pos. (above/below)	8,03/4,57 m		
Hold floor surface	1.430 m ²		
Tween deck surface	1.463/1.472 m ²		
Hatch cover surface	1.638 m ²		
Container capacity			
Hold capacity	446		
Deck capacity	421 (60 reefer)		
Total	661 TEU (@ 14 mt)		
Stack weight TEU/FEU	Tanktop: 120/130 mt		
	Hatchcovers: 50/60 mt		
TEU slots for IMDG class 1.1-Class 1.4S	On deck fwd frame 39		
	All deck and holds		

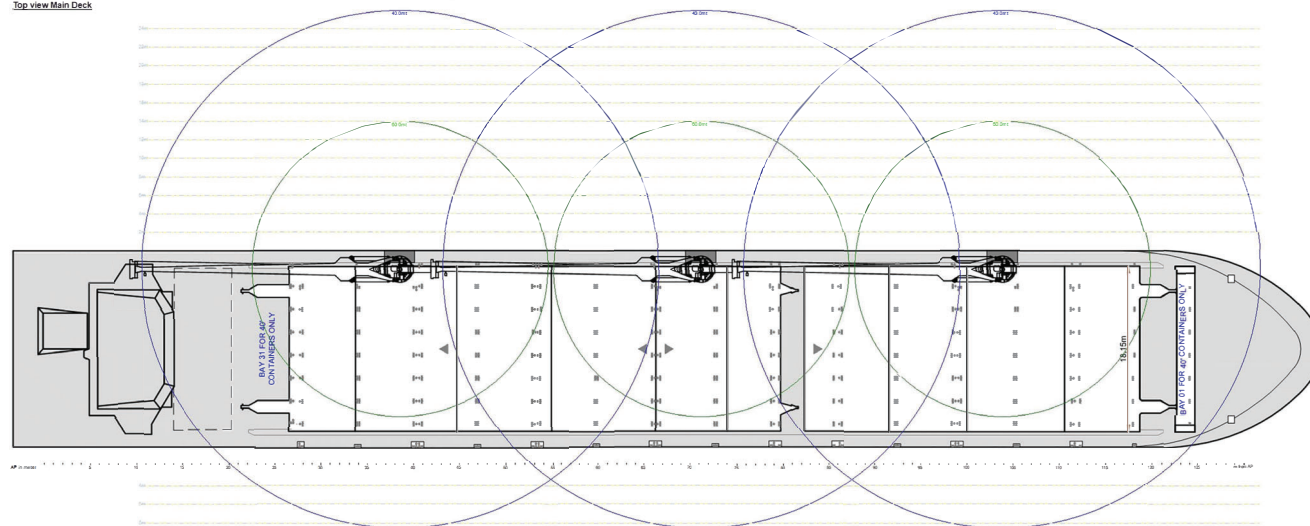
All details are believed to be correct but without guarantee/NN

Phone: +45 70 70 13 11
E-mail: europe@ocean7projects.com
Web: <https://ocean7projects.com>

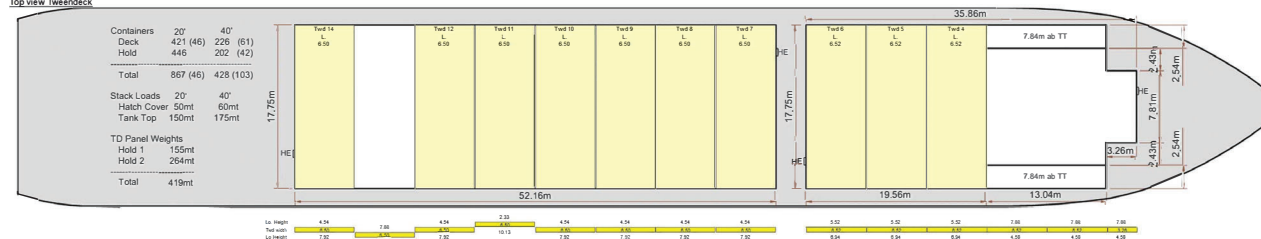
Side view



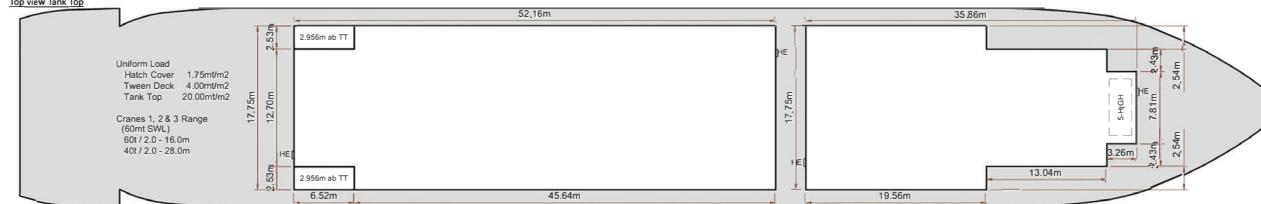
Top view Main Deck



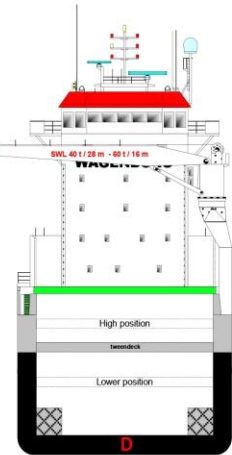
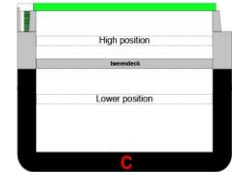
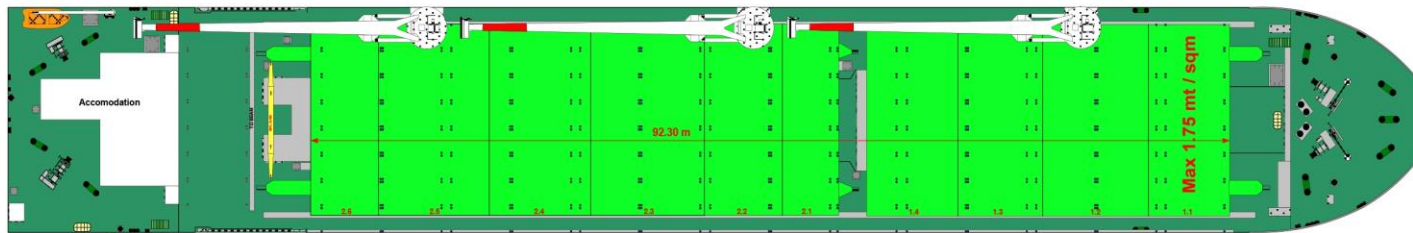
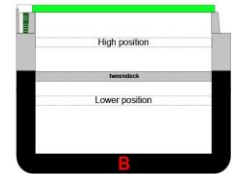
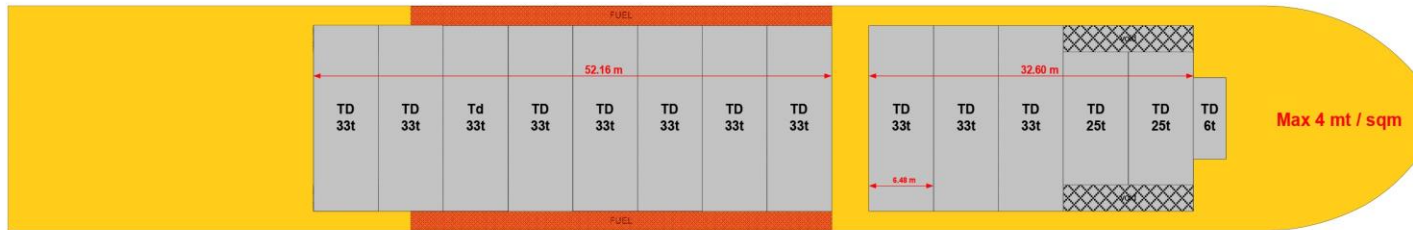
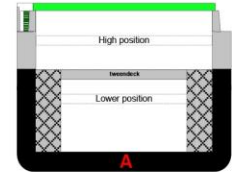
Top view Tweendeck

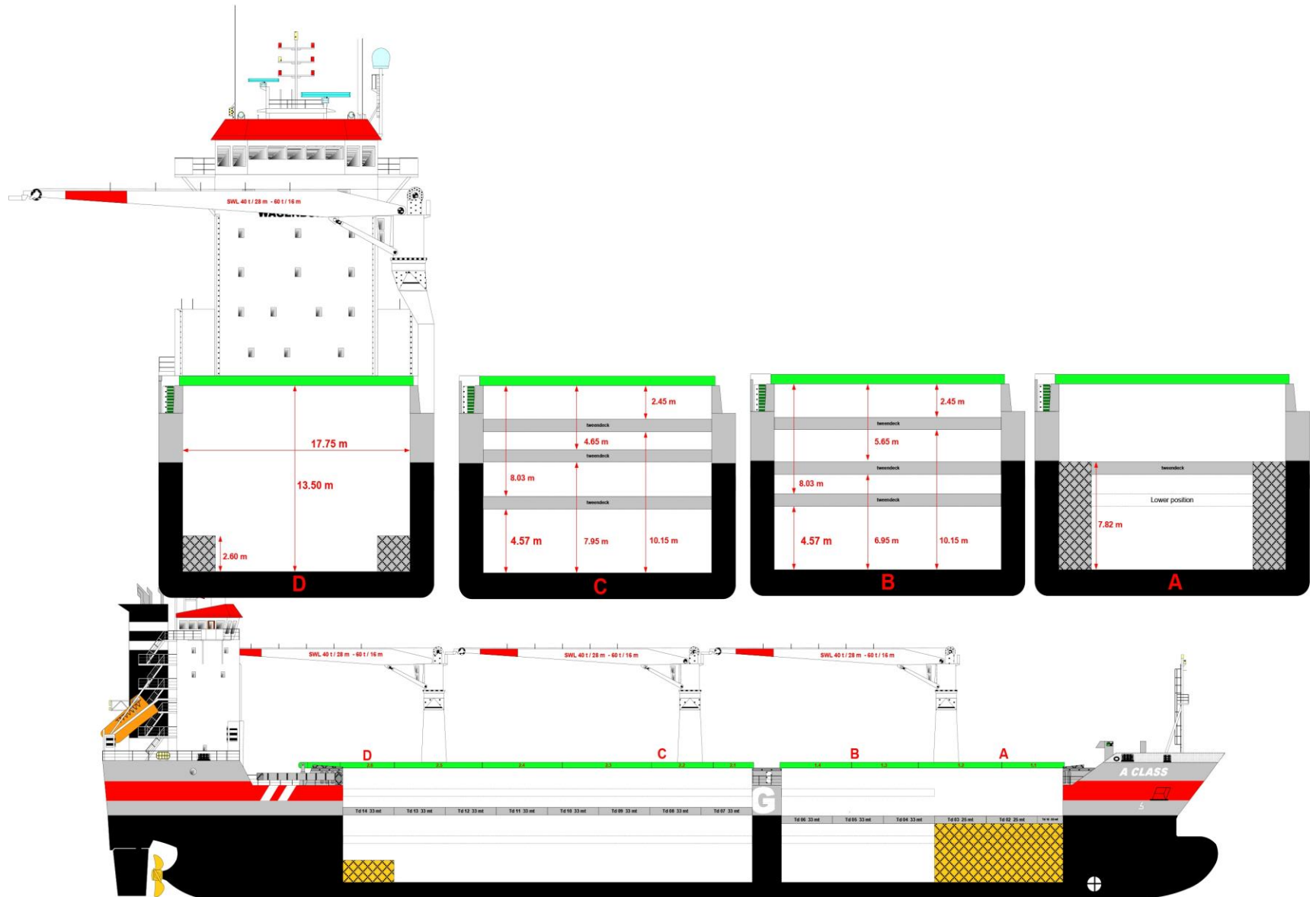


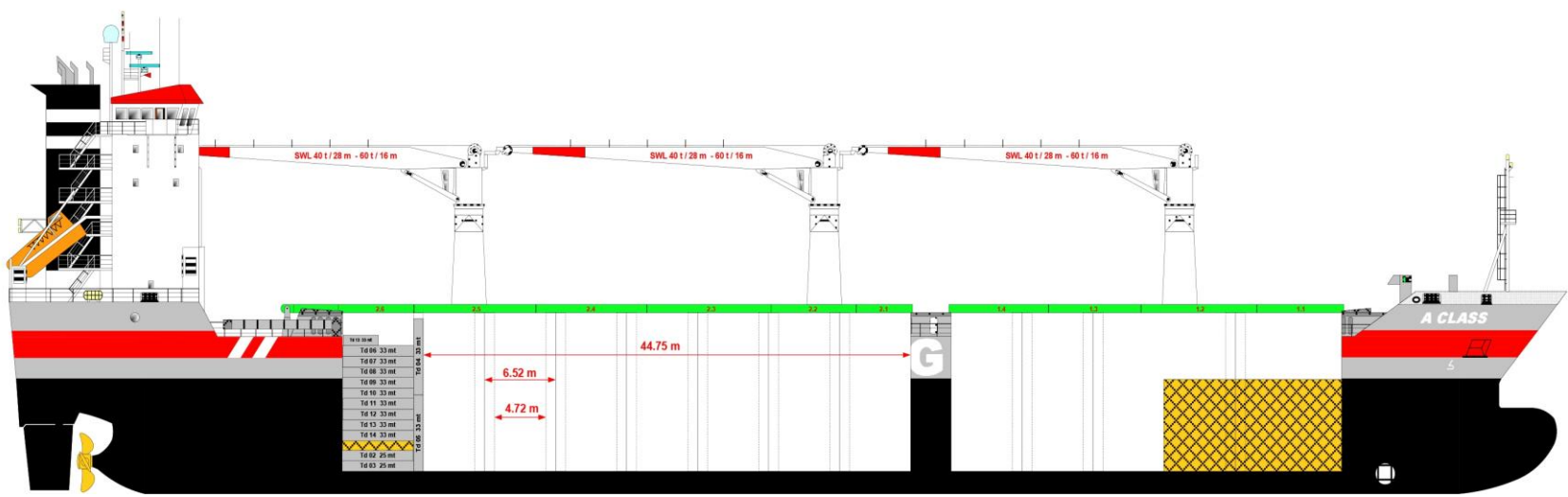
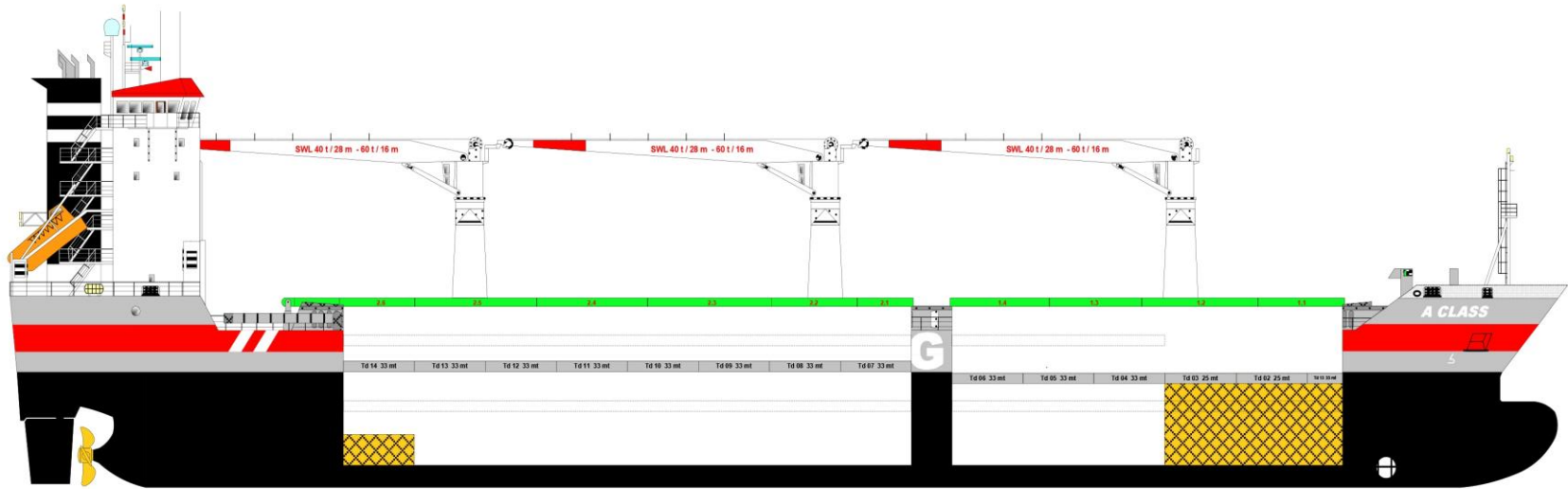
Top view Tank Top

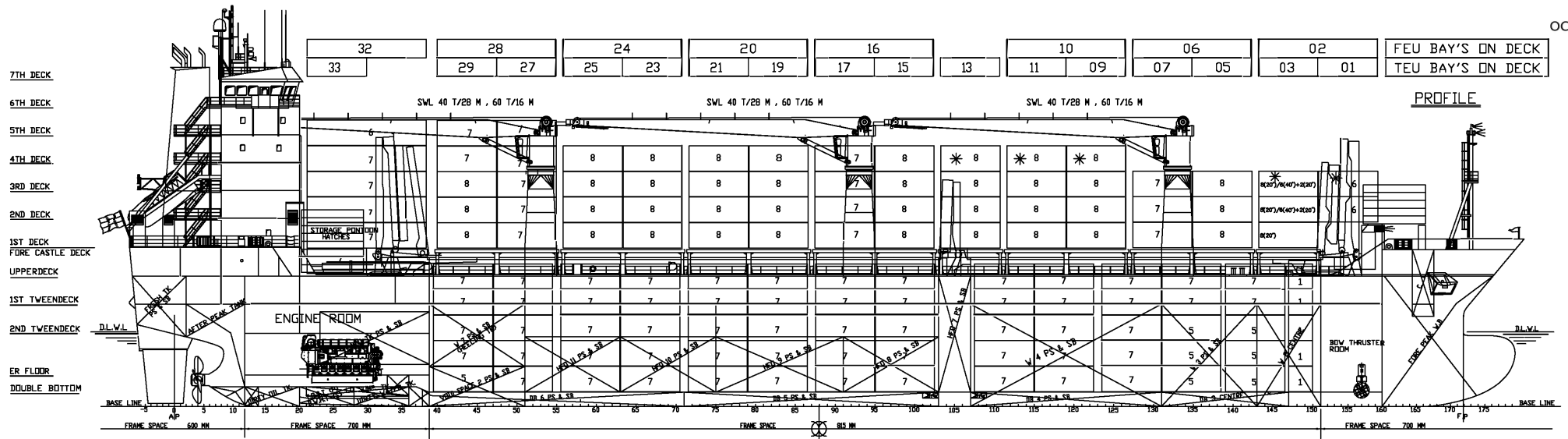


V# ALASKABORG
IMO no: 966314









TIER ON DECK	90
	88
	86
	84
	82
TIER IN HOLD	10
	08
	06
	04
	02

32	28	24	20	16	10	06	02	FEU BAY'S ON DECK								
33	29	27	25	23	21	19	17	15	13	11	09	07	05	03	01	TEU BAY'S ON DECK

29	27	25	23	21	19	17	15	11	09	07	05	03	01	TEU BAY'S IN HOLD
28	24	20	16	10	06	TEU BAY'S IN HOLD								