



Ship's particulars



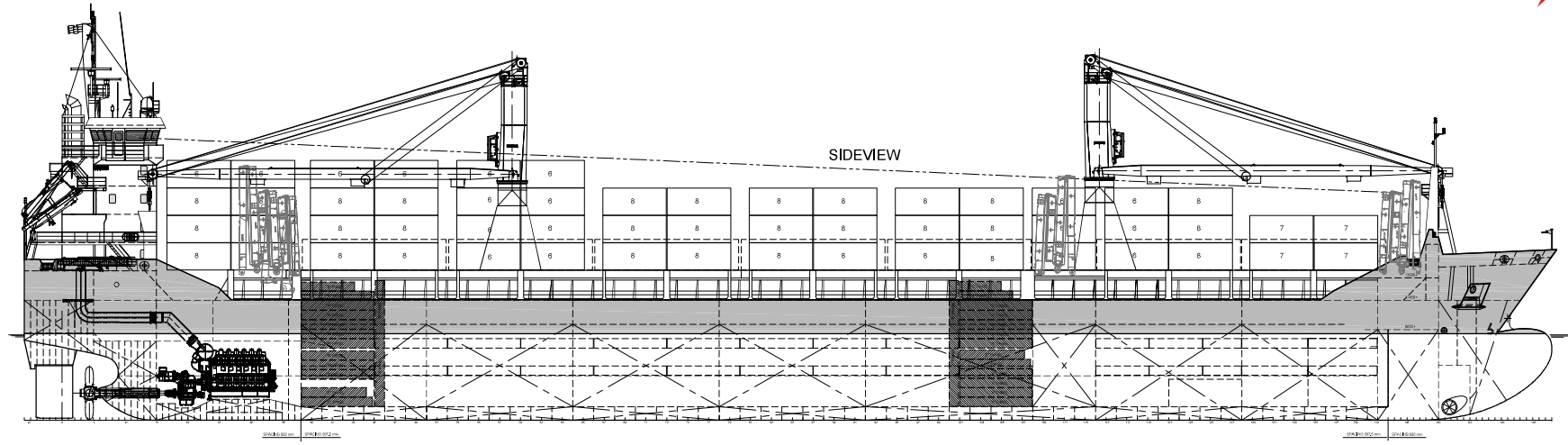
M/V 'ARA ROTTERDAM'

Valid as of 24 Mar 2025

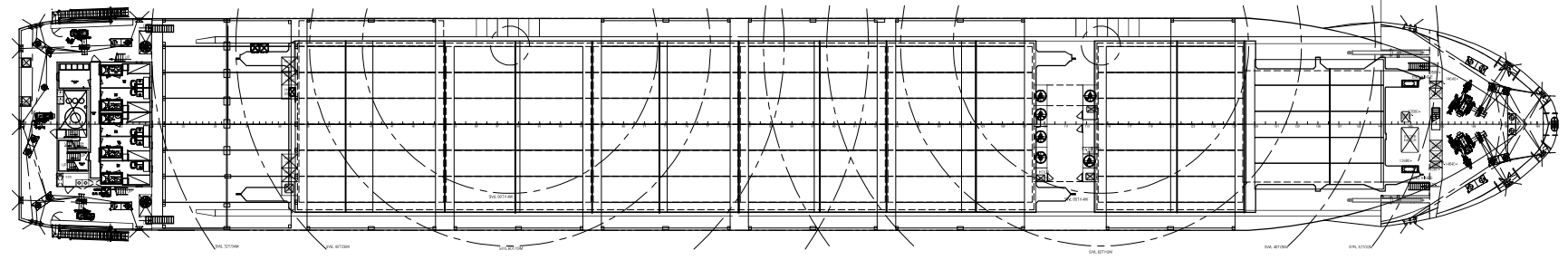
Registration		Deck loads	
Call sign	CQ2030	Tanktop	18,00 mt/m ²
IMO number	9549566	Tween decks	5,00 mt/m ²
Port of registry	Madeira	Hatch covers	1,75 mt/m ²
Flag state	Portugal		
Shipyard	Damen Yichang Shipyard		
Year/Place of delivery	2012/Shanghai		
Class	DNV		
Class notation	☒ 100 A5 E3 DBC DG Multi-Purpose Dry Cargo Ship Strength. for heavy cargo ☒ MC E3 AUT	Hatch covers/Tween deck	
Ice class	1A	Type of hatch covers	#1: 4 hydraulic folding #2: 6+4 hydraulic folding
P&I Club	NorthStandard	Tween deck pontoons	5 + 10 pontoons
		Propulsion/Maneuvering	
Tonnage		Main Engine	6000 kW
DWAT	13.536 mt (incl. tween decks)	Bow thruster	720 kW
DWCC	12.400 mt (est.)		
Gross tonnage	9.963	Propeller	CPP
Net tonnage	4.937	Rudder	Balanced
		Service speed	14,0 kn
Dimensions		Bunkers/Ballast capacity	
Length over all	146,25 m	Heavy fuel oil	733 m ³
Length between p.p.	136,99 m	Marine gas oil	91 m ³
Breadth over all	20,10 m	Fresh water	117 m ³
Breadth moulded	20,10 m	Ballast water	6383 m ³
Summer draught	8,25 m		
Depth moulded	11,45 m	Cargo gear	
Height keel to top mast	39,70 m	Cranes on port side	2 x Mac Gregor x 80 mt SWL
		Load/Outreach	80 mt at 6.0-14.0 m 60 mt at 6.0-19.0 m 40 mt at 6.0-26.0 m 32 mt at 2.5-34.0 m
Hold/hatch sizes		Tandem load	160 mt SWL
Number of holds/hatches	2/2		
Hold capacity	About 17.242 m ³ /609.000 ft ³	Lifting beam on board	No
#1 tank top dimensions	26,91 x 15,77/10,45/5,20 m	Spreader beams on board	No
#1 tween deck dimensions	26,91 x 10,45/10,45/5,20 m		
#1 hatch cover dimensions	27,00 x 16,27/10,96 m		
#2 tank top dimensions	69,00 x 15,77/10,48 m		
#2 tween deck dimensions	69,00 x 15,77 m		
#2 hatch cover dimensions	70,00 x 16,27 m		
Hold height	12,10 m		
1 st pos. Tanktop -> Tween deck	5,61 m		
Tween deck -> Hatch cover	5,58 m		
2 nd pos. Tanktop -> Tween deck	3,03 m		
Tween deck -> Hatch cover	8,19 m		
Hold floor surface	1350 m ²		
Hatch cover surface	1516 m ²		
Container capacity			
Hold capacity	312 TEU		
Deck capacity	400 TEU (80 reefer)		
Total	712 TEU		
Stack weight TEU/FEU	Tanktop: 100/135 mt Hatchcovers: 50/65 mt		
TEU slots for IMDG class 1.1-1.6	In hold # 1 and on deck		
Class 1.4S	In hold # 1 & #2 and on deck		

All details are believed to be correct but without guarantee/HWS

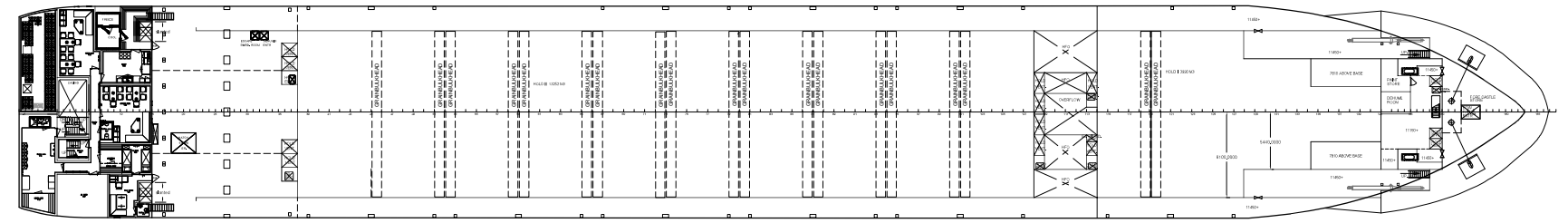
Phone: +45 70 70 13 11
E-mail: europa@ocean7projects.com
Web: <https://ocean7projects.com>



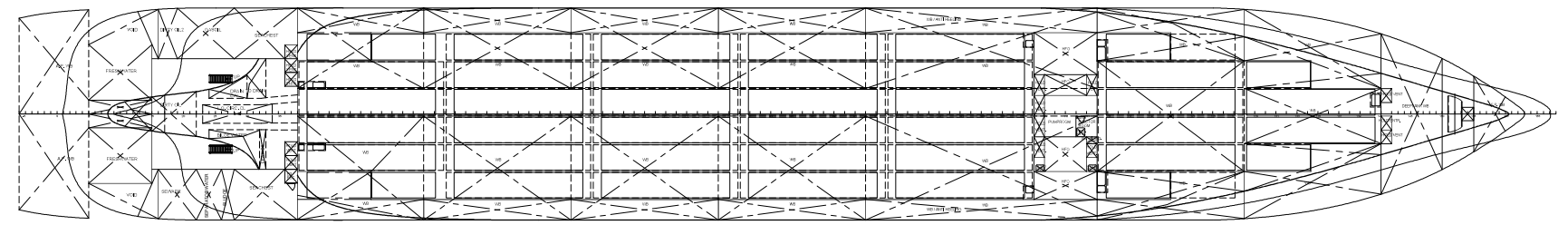
POOPDECK 14250 HATCHES FORECASTLE DECK



MAINDECK 11450 MAINDECK 11450

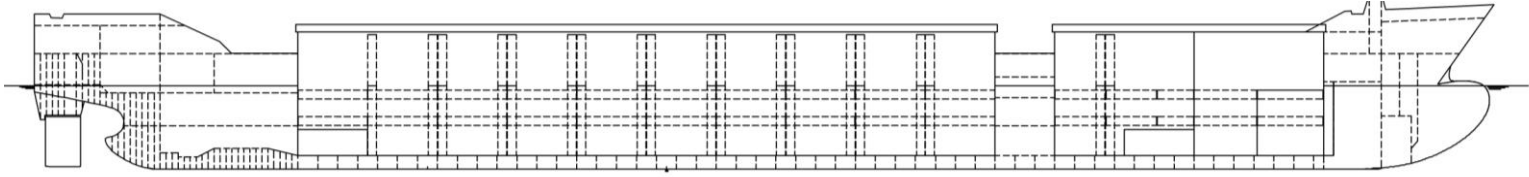


TANKTOP 1300

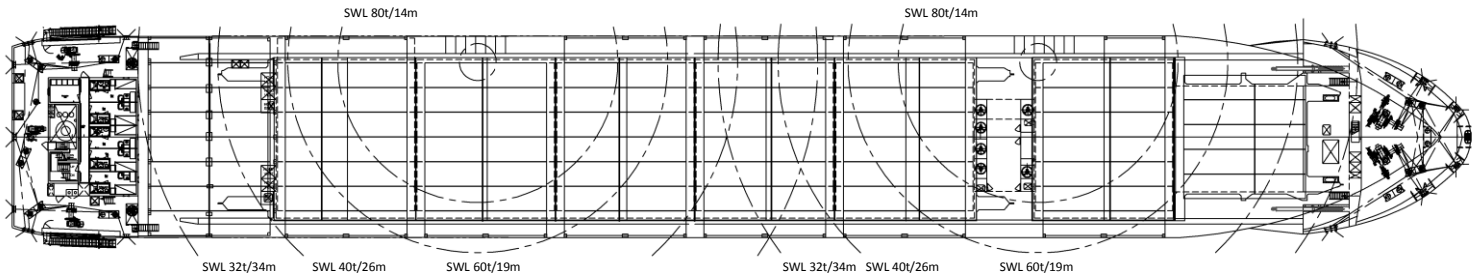


ARA Rotterdam

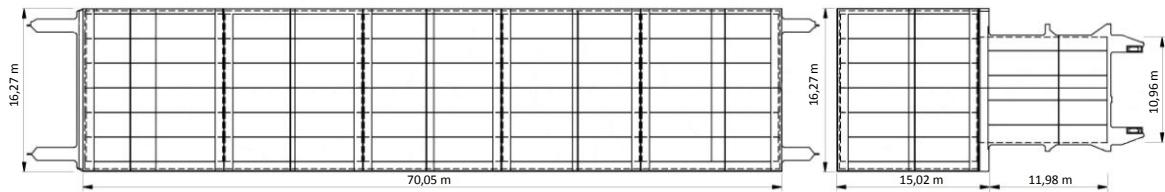
PROFILE



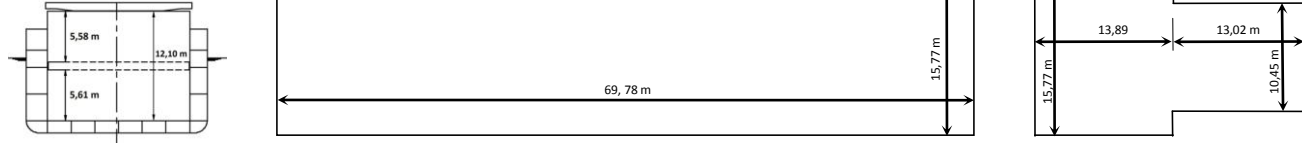
MAIN DECK



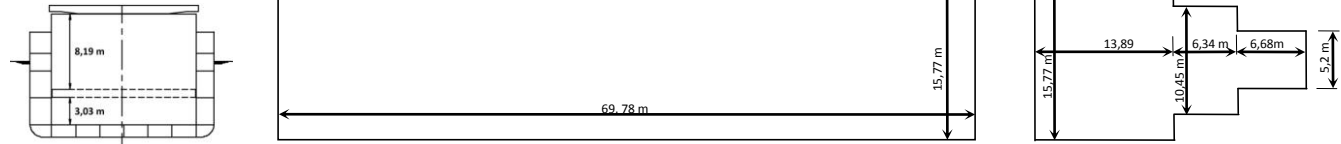
HATCH COVERS



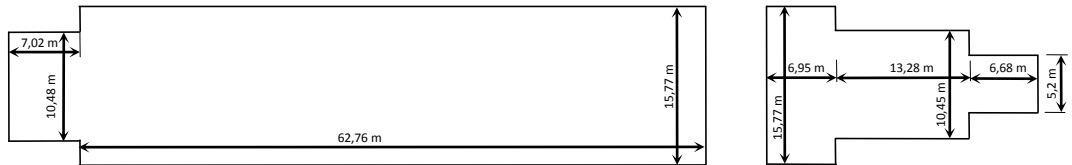
TWEENDECK UPPER POSITION



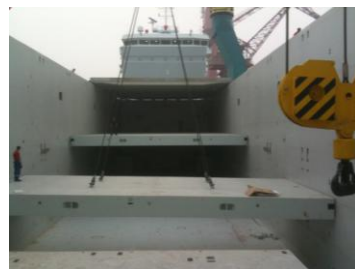
TWEENDECK LOWER POSITION



TANK TOP



HOLD No. 1



HOLD No. 2

