



M/V 'BILLESBORG'

Valid as of 05 July 2021

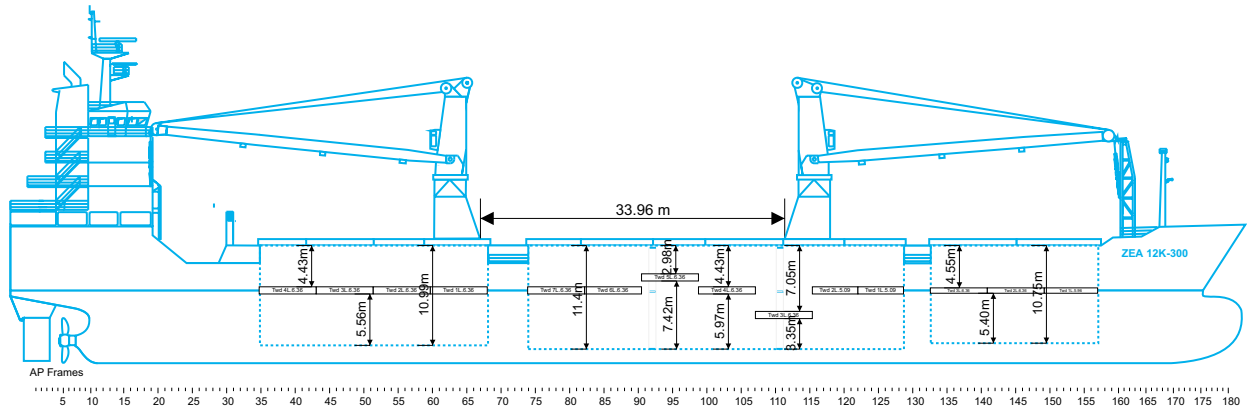
Registration	D5ZC6	Deck loads	
Call sign	D5ZC6	Tanktop	16,0 mt/m ²
IMO number	9488047	#1 + #2 upper tween deck	2,5 mt/m ²
Port of registry	Monrovia	#2 lower/mid tween deck	4,0 mt/m ²
Flag state	Liberia	#3 hold	4,0 mt/m ²
Shipyard	Sanfu Shipyard	Hatch covers	1,75 mt/m ²
Year/Place of delivery	2011/PRC	Hatch covers/Tween deck	
Class	Rina	Type of hatch covers	18 hydr./foldable covers
Class notation	C ✕ General Cargo ship Double side-skin, equipped for carriage of containers ✕ AUT-UMS, Grabloading Ice class IA	Tween deck pontoons	3+7+4 = 14 removable panels
P&I Club	Standard Club Ireland DAC	Grain bulkheads made of tween deck panels	2 positions in hold #2
Tonnage		Propulsion/Maneuvering	
DWAT	12.580 mt	Main Engine	5400 kW
DWCC	Abt. 11.000 mt	Bow thruster	500 kW
Gross tonnage	9.627	Propeller	Balanced
Net tonnage	4.261	Rudder	Controllable Pitch Propeller
Dimensions		Service speed	15,0 kn
Length over all	138,50 m	Bunkers/Ballast capacity	
Length between p.p.	130,71 m	Heavy fuel oil	955 m ³
Breadth over all	21,00 m	Marine gas oil	152 m ³
Breadth moulded	21,00 m	Fresh water	148 m ³
Summer draught	8,00 m	Ballast water	4.932 m ³
Depth moulded	11,00 m	Cargo gear	
Height keel to top mast	39,38 m	Cranes on port side	2 x NMF x 150 mt SWL
Hold/hatch sizes		Load/Outreach	150 mt/4,5 – 16,0 m 120 mt/4,5 – 19,0 m 95 mt/4,0 – 24,0 m 70 mt/3,5 – 33,0 m
Number of holds/hatches	3/3	Tandem load	300 mt SWL
Hold capacity	About 15.953 m ³ /563.375 ft ³	Lifting beam on board	1 x 18 mtr, 2 x 150 mt WLL
#1 Hatch coaming/Lower hold	18,72 x 15,00/10,00 m	Spreader beams on board	4 x 5 & 8 mtr x 165 mt WLL
#2 Hatch coaming/Lower hold	42,00 x 17,50 m	Lifting heights	
#3 Hatch coaming/Lower hold	25,50 x 17,50/14,60 m		
Weather deck dimensions	104,05 x 17,50 m		
#1, #2 and #3 Hold heights	10,75/11,40/10,99 m		
#1 Heights above/below T/D	4,55/5,40 m		
#2 Heights above/below T/D	7,05/3,35 m or 4,43/5,97 m or 2,98/7,42 m		
#3 Heights above/below T/D	4,43/5,56 m		
Loading area under deck	2.856 m ²		
Loading area on deck	1.463 m ²		
Container capacity			
Hold capacity	334 TEU		
Deck capacity	331 TEU (50 reefer)		
Total	665 TEU		
Stack weight TEU/FEU	Tanktop: 96/120 mt Hatchcovers: 50/65 mt		
TEU slots for IMO class 1	On deck in front of frame 35 In holds where protected by water spray system		

*All details are believed to be correct but
without guarantee/HWS*

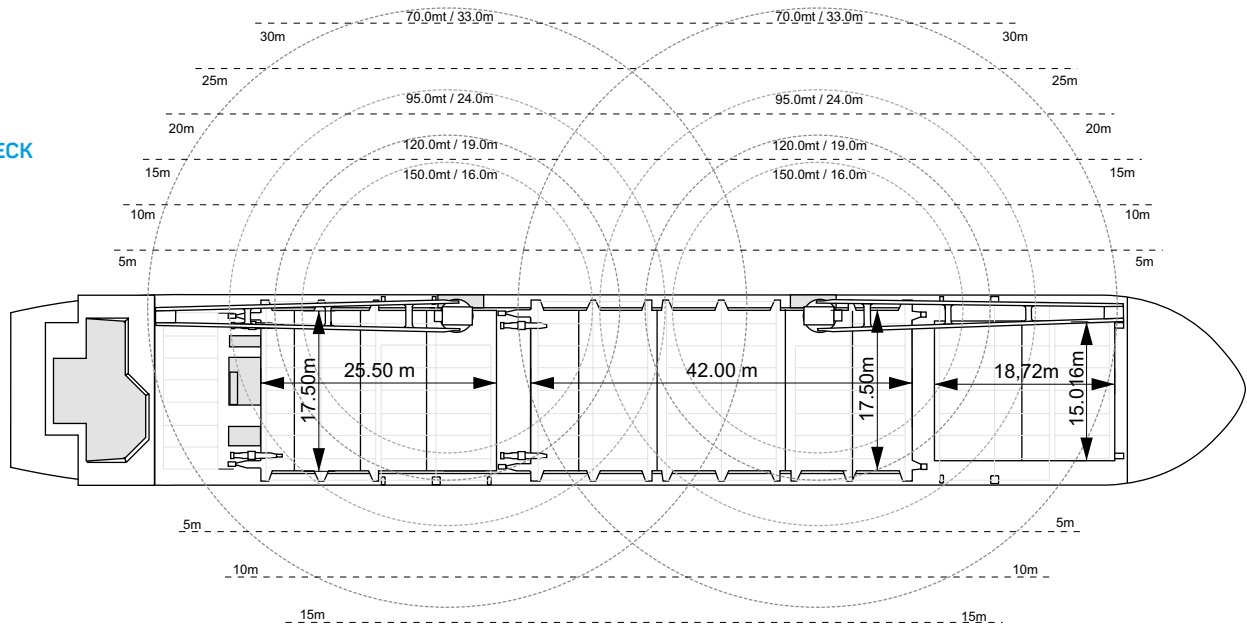
OCEAN7 Projects ApS
Jyllandsgade 19A
DK-7000 Fredericia
Denmark

Phone: +45 7070 1311
E-mail: europe@ocean7projects.com

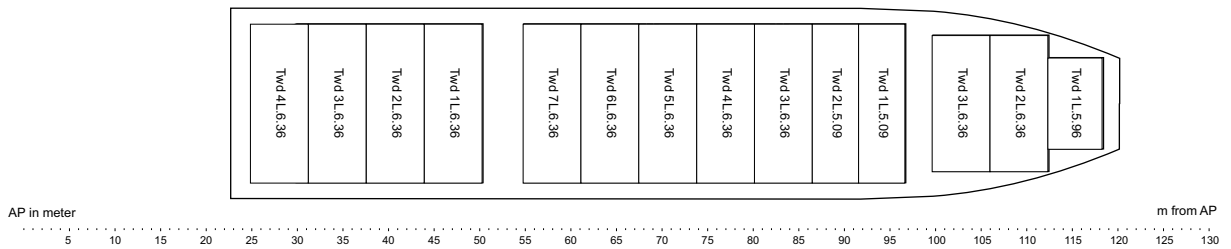
SIDE VIEW



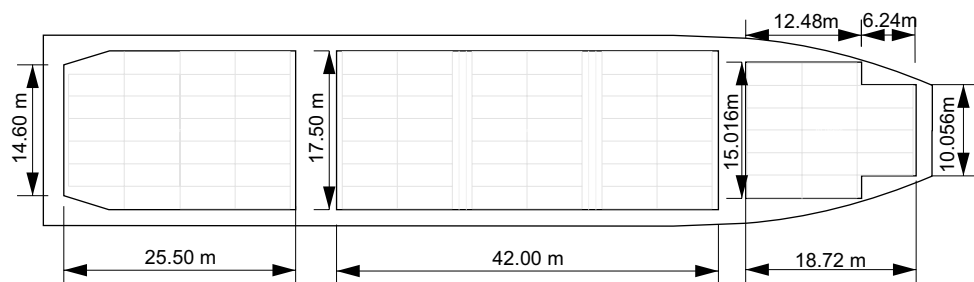
MAIN DECK



TWEENDECK

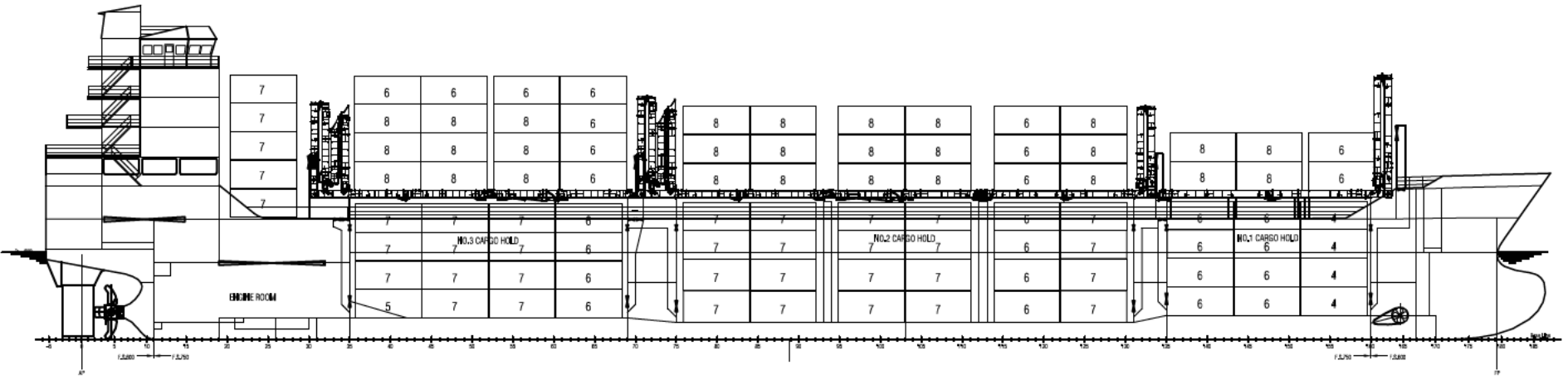


HOLDS & DOUBLE BOTTOM



27	25	23	21	19	17	15	13	11	09	07	05	03	01
	24		20		16		12		08		04	02	

BAY NO. (20'CONT.)
BAY NO. (40'CONT.)



35	30	30	30	24	24	24	24	18	24	16	16	12
	30		24(6)		24		24		24		16	
	26	28	28	24	28	28	28	24	28	24	24	16
	26(2)		24		28		28		28		24	16(8)

DECK 20' TOTAL TEU 331
DECK 40' TOTAL FEU 142 (6)

HOLD 20' TOTAL TEU 334
HOLD 40' TOTAL FEU gr2 158 (18)
HOLD 40' TOTAL FEU gr1 150 (34)

TOTAL TEU 665
TOTAL FEU 300 (24)

