



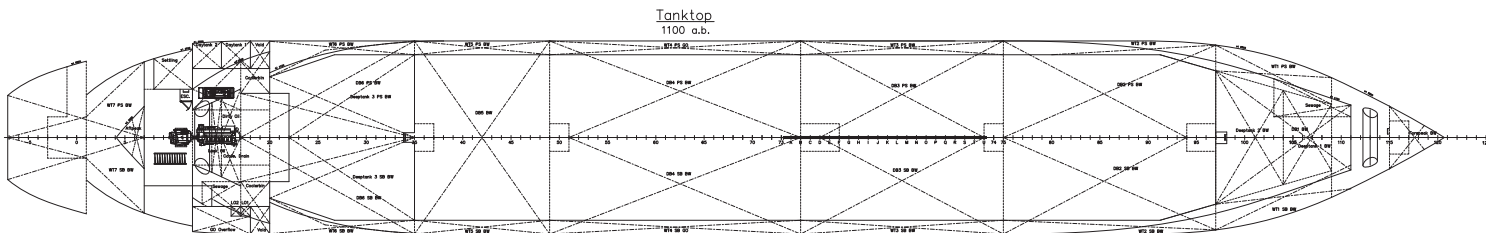
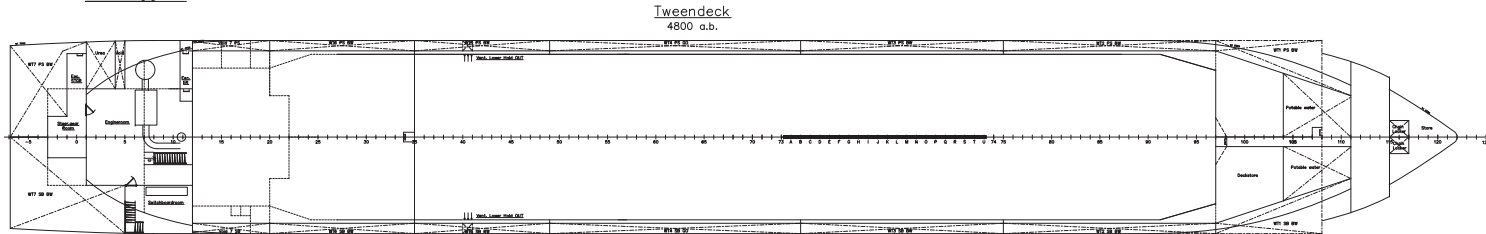
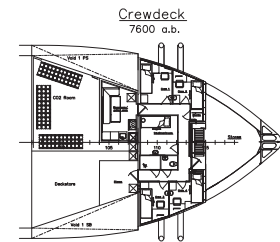
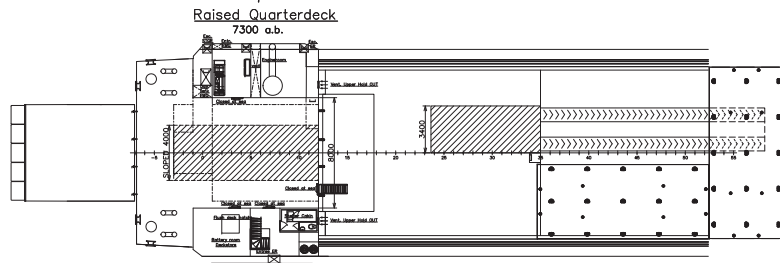
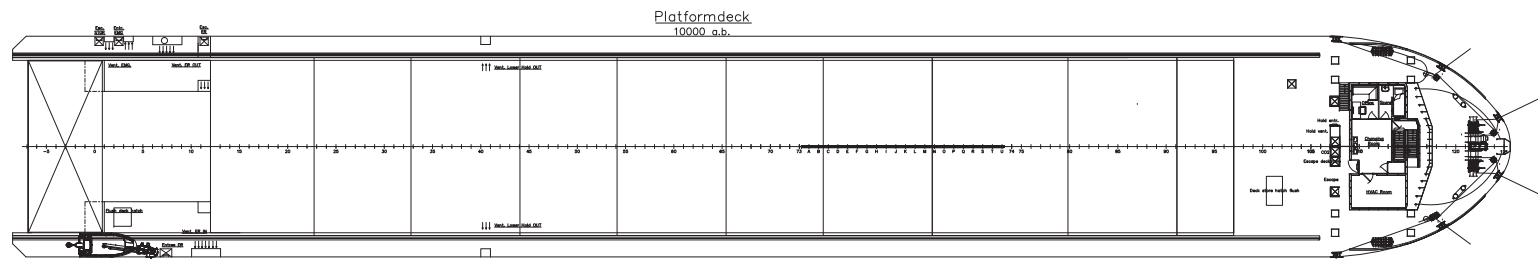
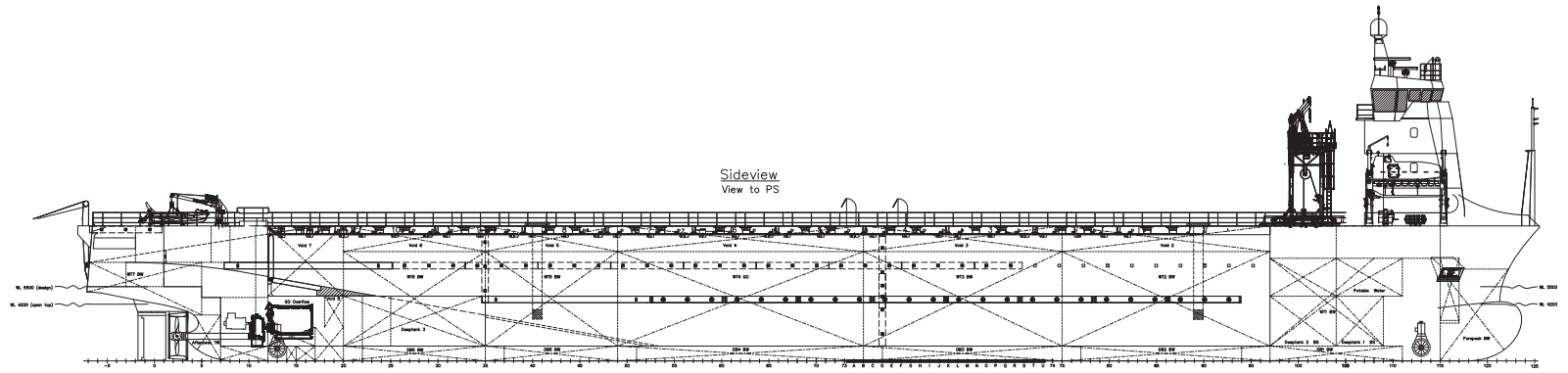
M/V 'CELTIC'

Valid as of 03 Apr 2025

<p>Registration Call sign PDFY IMO number 9917672 Port of registry Urk Flag state The Netherlands Shipyard Hartman Marine Shipbuilding Year/Place of delivery 2021/Urk Class Bureau Veritas Class notation I ✕HULL ✕MACH General cargo ship Ro-ro cargo ship -heavycargo -occasional dry bulk cargo, Unrestricted navigation, ✕ AUT-UMS</p> <p>P&I Club West of England</p> <p>Tonnage DWAT (closed/open) 4540/2875 mt DWCC (closed/open) abt. 4250/2585 mt Gross tonnage 3636 Net tonnage 1090</p> <p>Dimensions Length over all 108,25 m Length between p.p. 100,55 m Breadth over all 16,00 m Breadth moulded 14,00 m Summer draught 5,52 m (close top) 4,20 m (open top) Depth moulded 10,00 m Height keel to top mast 26,40 m</p> <p>Hold/hatch sizes Number of holds/hatches 1/1 Hold capacity 6.475 m³ / 228.672 ft³ Total lane meters 1.267 m Lower hold dimensions 58,10 x 12,00 m Upper hold dimensions 74,00 x 12,50 m Deck length original 81,15 x 15,80 m Deck length max. 95,00 x 15,50 m Hold height 8,30 m Tween deck -> Hatch cover 2,11/3,90/4,61 m Tween deck -> Tank top 5,69/3,90/3,19 m (50 cm Pan) Tween deck-> Tank top 5,39/3,60/2,89 m (80 cm Pan) Hold floor surface LH 681m², UH 925 m² Deck floor surface 1450 m²</p> <p>Container capacity Hold capacity 132 TEU Deck capacity 240 TEU Total 372 TEU Stack weight TEU/FEU As per deck load limit</p> <p>TEU slots for IMO class 1.4S On deck and 60 x 20' in CTb All deck and holds No IMO in open top condition</p>	<p>Deck loads Tanktop UH 5,0 mt/m² Tanktop LH 15,0 mt/m² Tween deck 5,0 mt/m² 5 tween deck panels 2,5 mt/m²/50 cm thick Pan. 40 mt axle load 3 tween deck panels 3,5 mt/m²/80 cm thick Pan. 80 mt axle load Hatch cover each 3,5 mt/m²/cover</p> <p>Hatch covers/Tween deck Type of hatch covers 12 pontoon hatches Tween deck panels 5 pcs 50 cm thick panels 3 pcs 80 cm thick panels (movable by own gantry)</p> <p>Grain fitted</p> <p>Open top condition Possible</p> <p>RoRo feature Length of ramp 4,85 m (incl. flaps) Width of ramp 7,00 m Max axel load on tween deck and ramp 80 mt/axle</p> <p>Propulsion/Maneuvering Main Engine 1600 kW Bow thruster 400 kW Stern thruster 300 kW Propeller Pitch with propeller nozzle Rudder Balance rudder Service speed 12,5 kt</p> <p>Bunkers/Ballast capacity Marine gas oil 233 m³ Fresh water 92 m³ Ballast water 2570 m³</p> <p>Cargo gear Cranes Gearless</p>
---	--

All details are believed to be correct but without guarantee/HWS

Phone: +45 70 70 13 11
E-mail: europe@ocean7projects.com
Web: ocean7projects.com



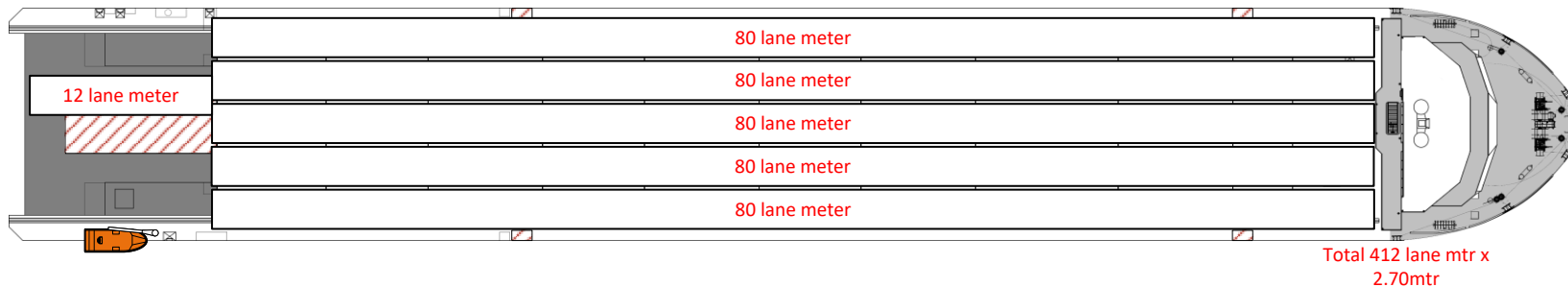
Lane meter overview trucks 2,7 mtr width

M/V Celtic

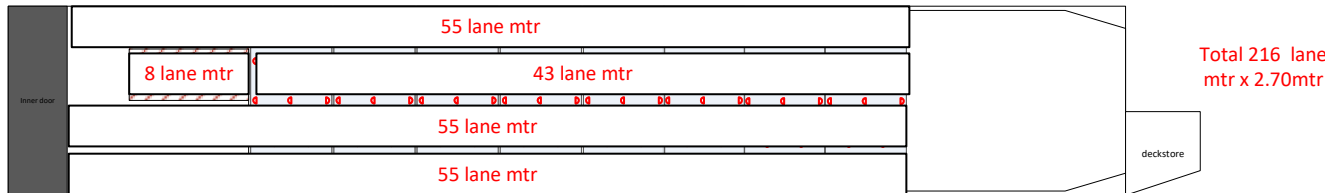
Length: 108.25m
 Breadth: 16.0m
 Draft: 5.465m

Total 819 Lane meters available (1x2.7)

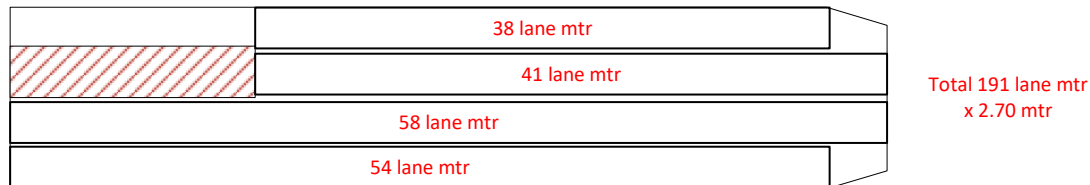
Deck strength
 3.5 mt/m2



Tweendeck
 Height td top position 2.05m
 Height td lower position 4.60m
 Deck strength 2.5 mt/m2



Tanktop
 Height td top position 5.75m
 Height td lower position 3.20M
 Total height available 8.30m
 Deck strength 15 mt/m2



Stowplan

Celtic

Client

Cargo management

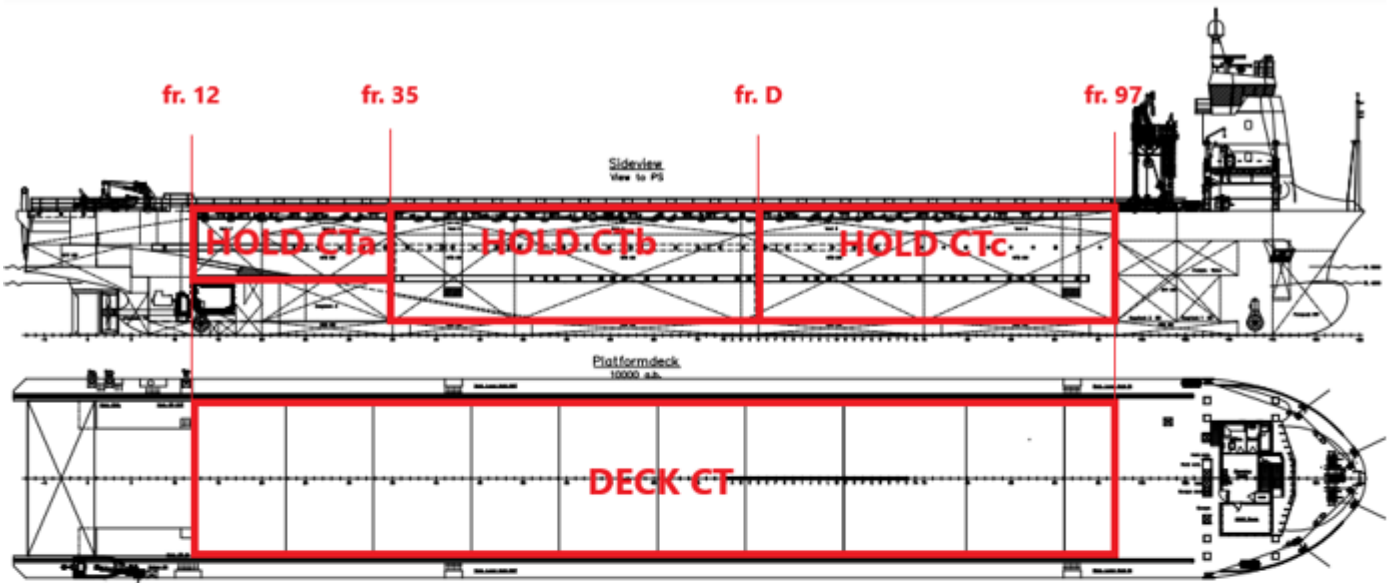
A4

APPENDIX TO DOCUMENT OF COMPLIANCE

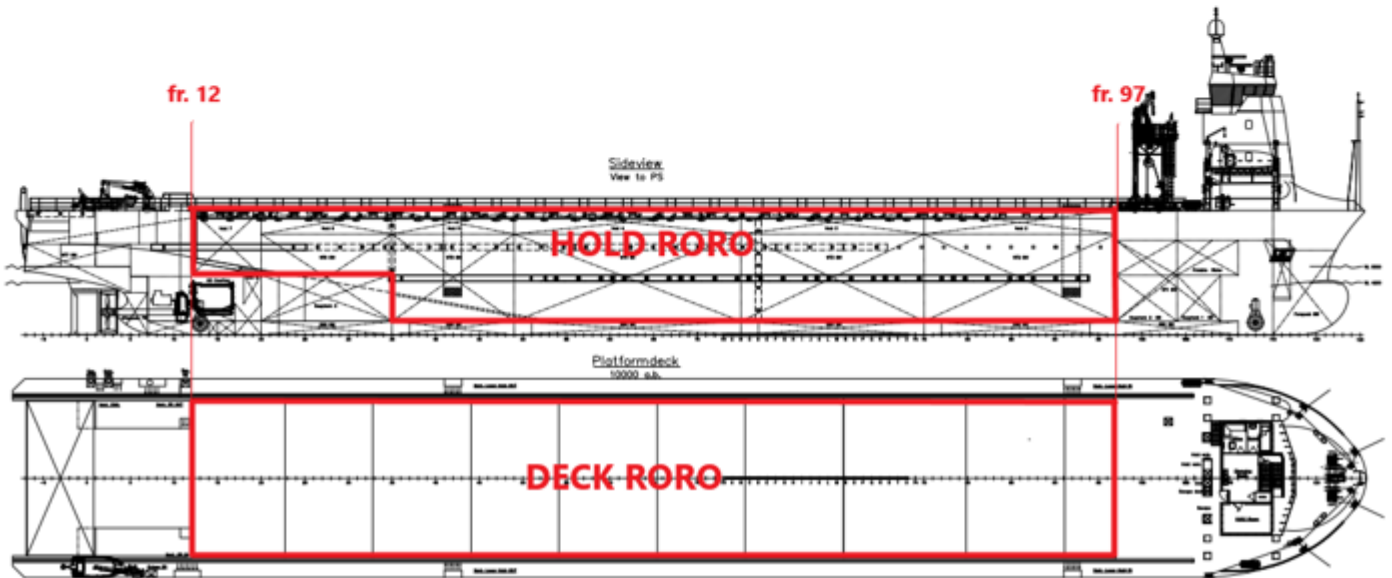
No: GNG0/WVE/20211229103810

SPACES TO BE INDICATED IN PLAN WITH NUMBERS
CORRESPONDING WITH TABLE

General Cargo Ship



RoRo Cargo Ship

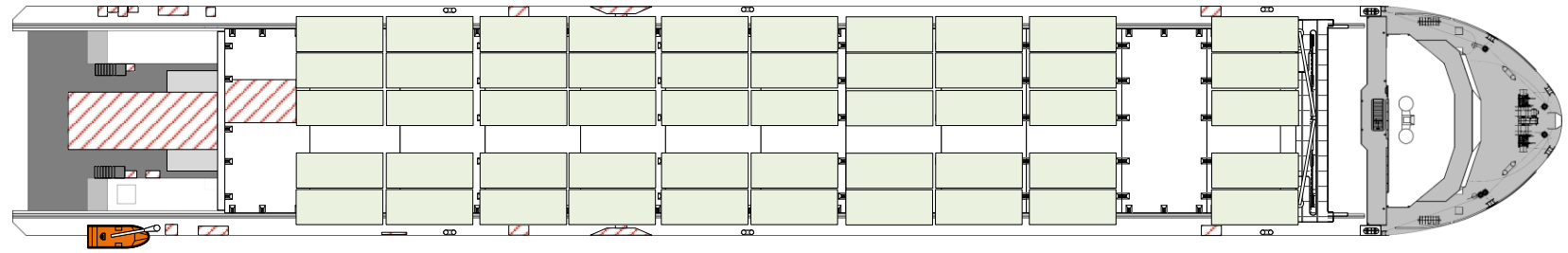
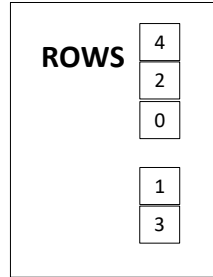


M/V Celtic

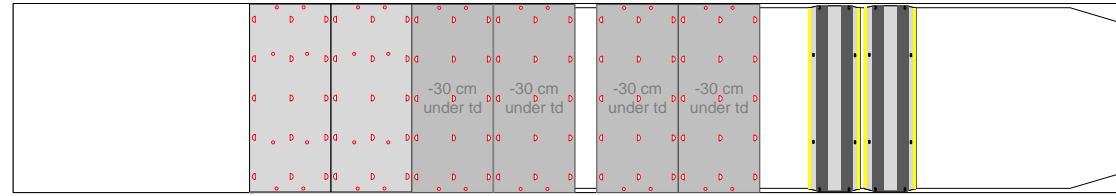
Length: 108.25m

Breadth: 16.0m

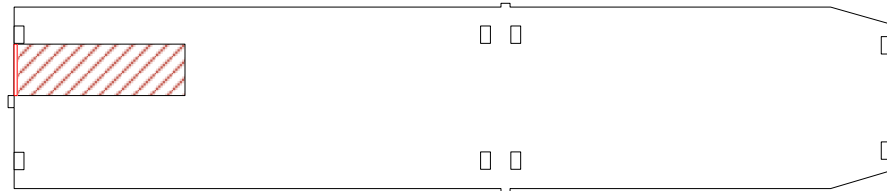
Draft: 5.465m



Tweendeck
 Height td top position 2.05M
 Height td mid position 3.90M
 Height td lower position 4.60m
 Deck strength 2.5 mt/m2



Tanktop
 Height td top position 5.75M
 Height td mid position 3.90M
 Height td lower position 3.20M
 Total height available 8.30m
 Deck strength 15 mt/m2



NOVA	N/A
------	-----



NOVA	Stowplan
NOVA	Cargo
NOVA	POL
NOVA	POD

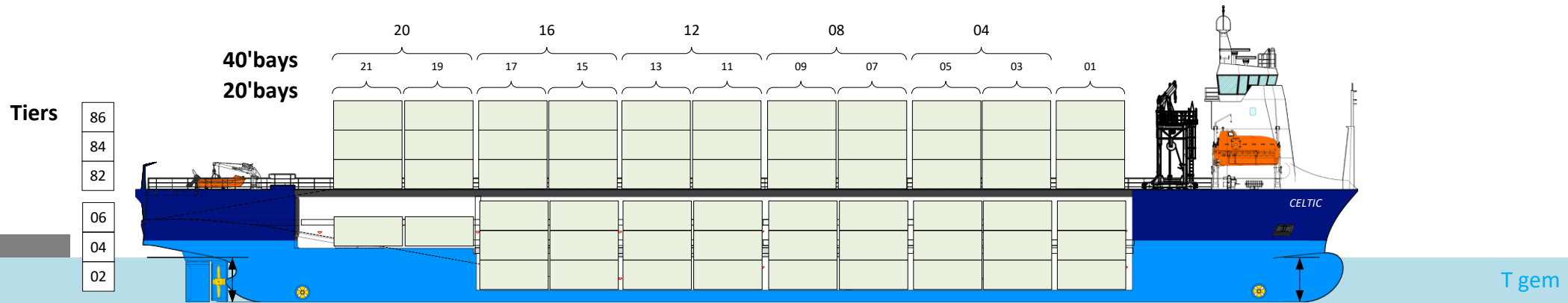
NOVA	Celtic		
CLIENT	Client	PROJECT	A4
DEPARTMENT	Cargo management	NOVA	

M/V Celtic

Length: 108.25m

Breadth: 16.0m

Draft: 5.465m



Tiers

86
84
82
06
04
02

T gem



NO. 001	N/A	NO. 001	Sideview	NO. 001	Celtic
NO. 002		NO. 002	Cargo	NO. 002	Client
NO. 003		NO. 003	POL	NO. 003	Cargo management
NO. 004		NO. 004	POD	NO. 004	A4