



**M/V 'EMMA'**

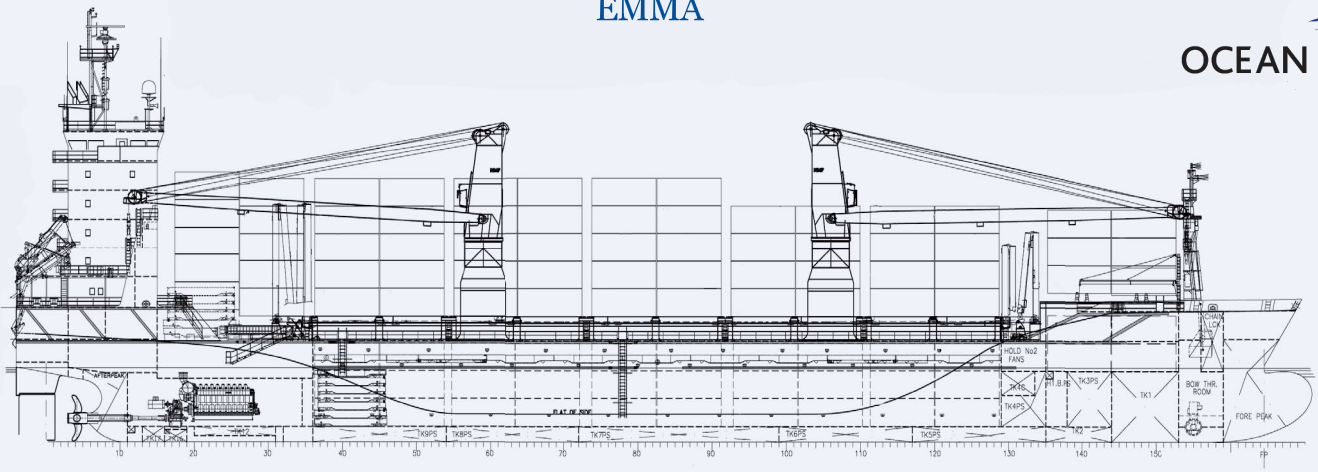
Valid as of 13 May 2021

<b>Registration</b>	V2EQ3	<b>Deck loads</b>	
Call sign	9474371	#1 Tanktop	10,0 mt/m <sup>2</sup>
IMO number	St. John's	#2 Tanktop	18,0 mt/m <sup>2</sup>
Port of registry	Antigua & Barbuda	Tween deck pontoons	2,5 mt/m <sup>2</sup>
Flag state	Remontowa S.A.	#1 Hatch cover	2,3 mt/m <sup>2</sup>
Shipyard	2009/Gdansk	#2 Hatch cover	2,8 mt/m <sup>2</sup>
Year/Place of delivery	DNV	<b>Hatch covers/Tween deck</b>	
Class	☒100 A5 E3 Multi-purpose	#1 Type of hatch covers	2 covers Lift on/lift off
Class notation	BWM Equipped for carriage of containers DBC SOLAS-II-2	#2 Type of hatch covers	Hydraulic folding
	Reg. 19 Strengthened for heavy cargo, ✕MC E3 AUT	#2 Tween deck pontoons	4 covers aft/4 covers fwd.
P&I Club	North of England P&I		11 panels
<b>Tonnage</b>		<b>Propulsion/Maneuvering</b>	
DWAT	7.700 mt	Main Engine	4320 kW
DWCC	7.000 mt	Bow thruster	450 kW
Gross tonnage	6.155	Shaft generator	720 kW
Net tonnage	2.759	Propeller	Variable pitch propeller
		Rudder	Semi balanced
		Service speed	Up to 14,0 kn
<b>Dimensions</b>		<b>Bunkers/Ballast capacity</b>	
Length over all	122,45 m	Heavy fuel oil	458 m <sup>3</sup>
Length between p.p.	115,15 m	Diesel oil	54 m <sup>3</sup>
Breadth over all	18,20 m	Lubricating oil	5 m <sup>3</sup>
Breadth moulded	18,20 m	Fresh water	88 m <sup>3</sup>
Summer draught	7,15 m	Ballast water	5358 m <sup>3</sup>
Depth moulded	9,50 m		
Height keel to top mast	41,50 m	<b>Cargo gear</b>	
		Cranes on port side	2 x NMF x 120 mt SWL
<b>Hold/hatch sizes</b>		Load/Outreach	120 mt/4.0-16.0 m
Number of holds/hatches	2/2		95 mt/4.0-19.0 m
Hold capacities	About 9.850 m <sup>3</sup> / 347.849 ft <sup>3</sup>		75 mt/4.0-24.0 m
			55 and 38 mt/3.0-33.0 m
#1 Hatch coaming/opening (lxb)	12,60 x 10,20 m	Tandem load	240 mt SWL
#1 Hold	12,60 x 10,20 m	Lifting beam on board	1 lifting beam, WLL 216,8 mt
	narrow to 5,10 last ??		
#2 Hatch coaming/opening	65,10 x 13,50 m	<b>Lifting heights</b>	
#2 Tween deck	65,10 x 13,50 m	At 4,0 m outreach	35,8 m
#2 Hold	65,10 x 13,50 m	At 16,0 m outreach	33,8 m
		At 19.0 m outreach	33,0 m
#1 hold height	6,55 m	At 24,0 m outreach	31,0 m
#2 hold height	9.55 m	At 33,0 m outreach	22,6 m
Height above/below TD #2	4,05m/4,70m or 2,75m/6,0m		
Hold floor surfaces	967 m <sup>2</sup>		
Deck floor surfaces	1007 m <sup>2</sup>		
<b>Container capacity</b>			
Hold capacity	164		
Deck capacity	368 (32 reefer)		
Total	532 TEU		
Stack weight TEU/FEU	Tanktop: 61,5/61,5 mt		
	Hatchcovers: 40/50 mt		
TEU slots for IMO class 1	All deck + 135 in hold #2		

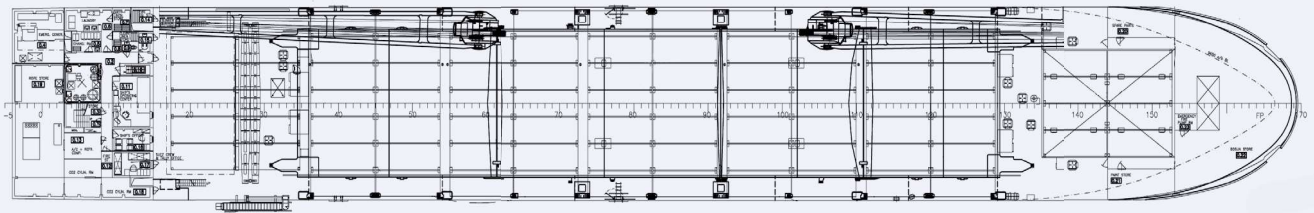
*All details are believed to be correct but without guarantee/HWS*

OCEAN7 Projects ApS  
Jyllandsgade 19A  
DK-7000 Fredericia  
Denmark

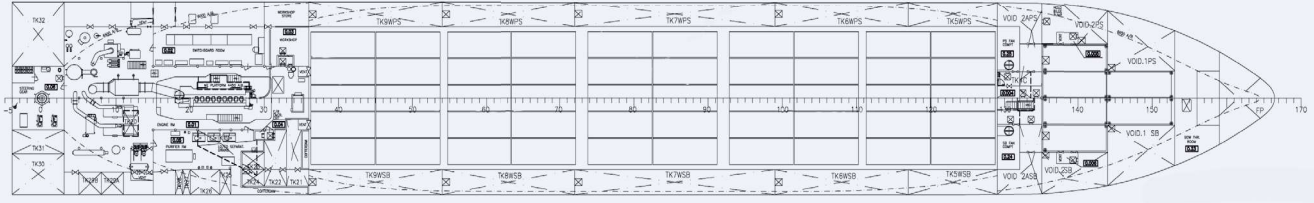
Phone: +45 7070 1311  
E-mail: europe@ocean7projects.com



Main deck



Section below main deck



Tank top

