



Ship's particulars



M/V 'EMS MIRA'

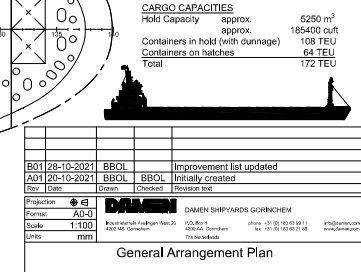
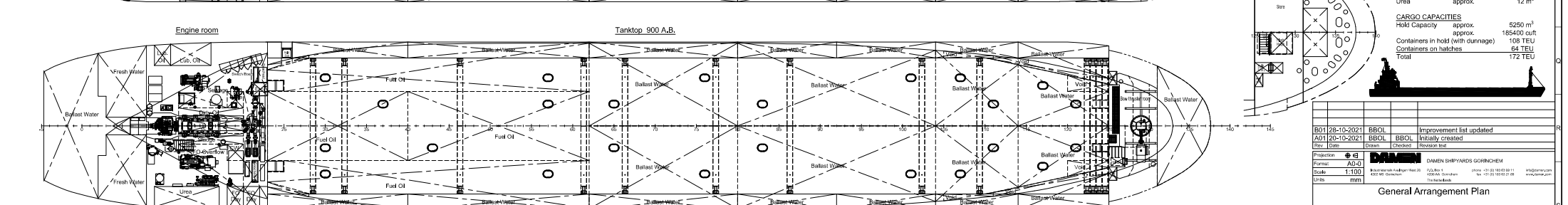
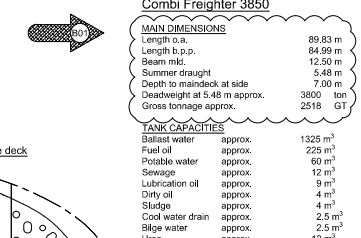
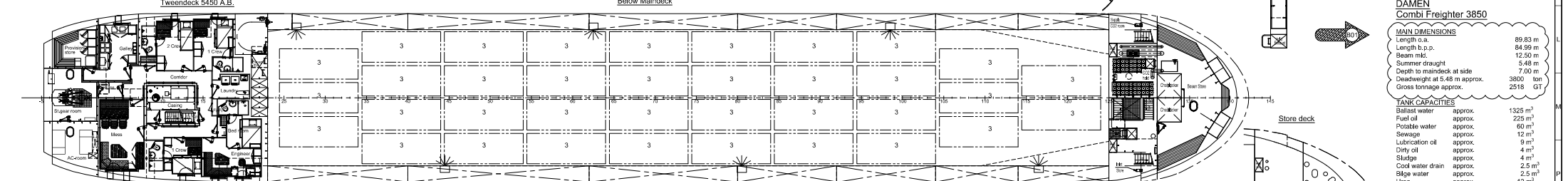
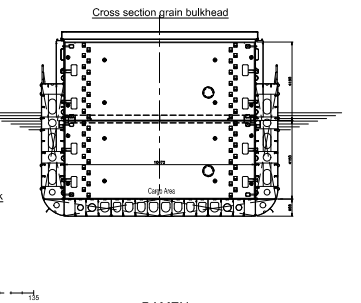
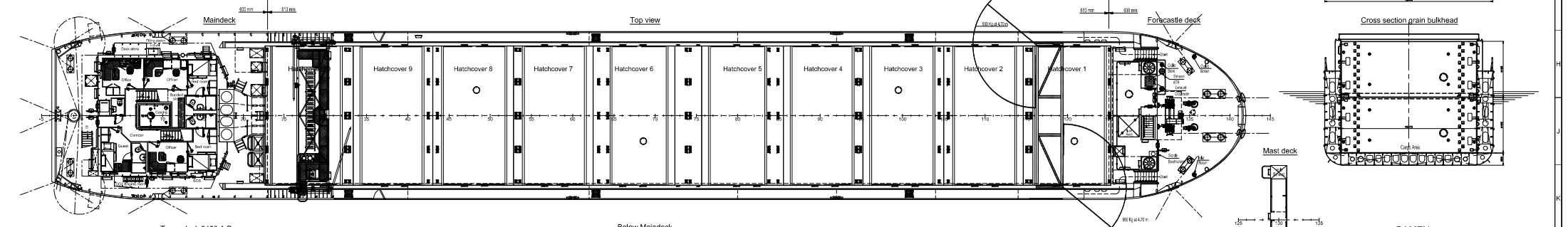
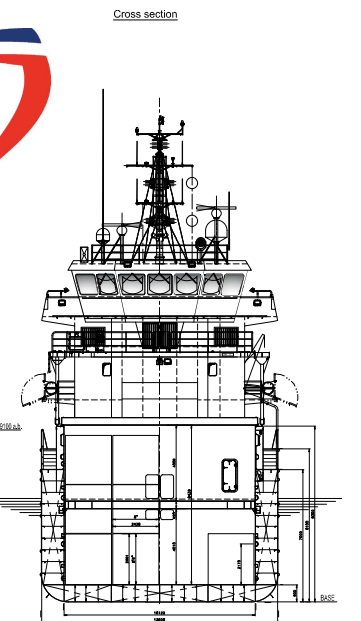
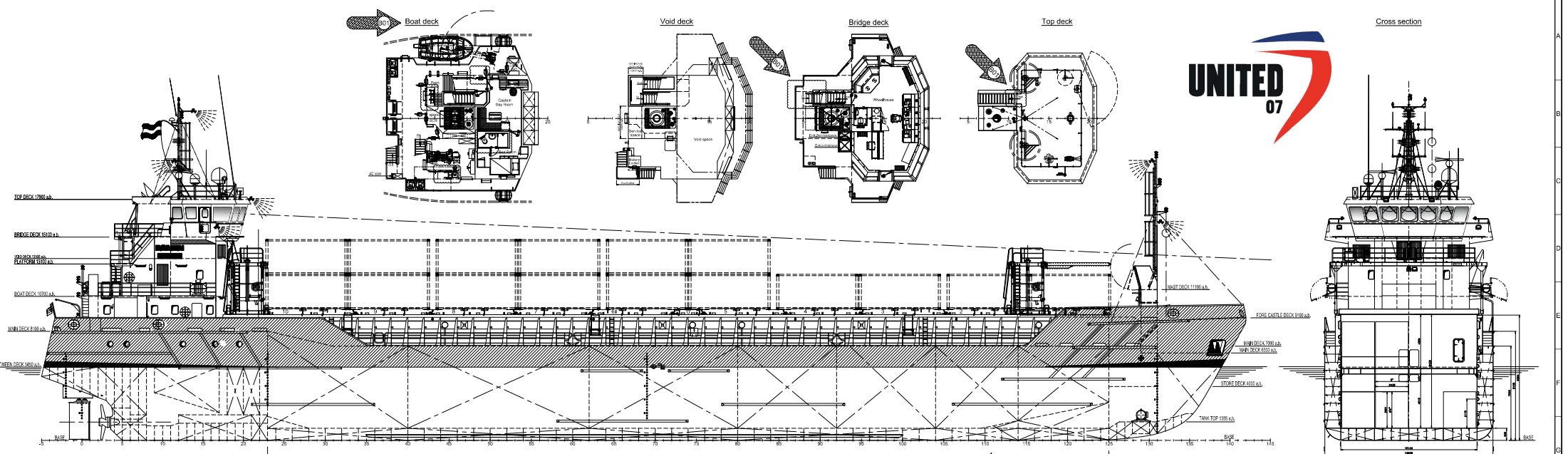
Valid as of 14 Apr 2025

Registration	
Call sign	YLRK
IMO number	9953937
Port of registry	Riga
Flag state	Latvia
Shipyard	Damen Shipyard
Year/Place of delivery	2023/Yichang
Class	
Class notation	
P&I Club	NNPC
Tonnage	
DWAT	3.850 mt
DWCC	Abt. 3.500 mt
Gross tonnage	2.518
Net tonnage	1.423
Dimensions	
Length over all	89,70 m
Length between p.p.	84,97 m
Breadth over all	12,50 m
Summer draught	
Depth moulded	5,48 m
Height keel to top mast	26,20 m
Hold/hatch sizes	
Number of holds/hatches	1/1
Hold capacity	About 5.250 m ³ /185.400 ft ³
Hold dimension	62,50 x 10,10 m
Hold height	8,40 m
Container capacity	
Hold capacity	108 TEU
Deck capacity	64 TEU (XX reefer)
Total	172 TEU
Stack weight TEU/FEU	Tanktop: XXX/XXX mt Hatchcovers: XX/XX mt
TEU slots for IMO class 1	On deck only

Deck loads	
Tanktop	15,00 mt/m ²
Hatch covers	1,60 mt/m ²
Hatch covers/Tween deck	
Type of hatch covers	10 Pontoons Moveable by own gantry
Bulkheads	2 moveable bulkheads of 4 panels, can be used as tween decks
Propulsion/Maneuvering	
Main Engine	1.104 kW
Bow thruster	280 kW
Propeller	Fixed pitch
Rudder	Balanced
Service speed	9,6 kn
Bunkers/Ballast capacity	
Marine gas oil	225 m ³
MGO day tank	12 m ³
Fresh water	60 m ³
Ballast water	1.325 m ³
Cargo gear	Gearless

*All details are believed to be correct but
without guarantee/NN*

Phone: +45 70 70 13 11
E-mail: europa@ocean7projects.com
Web: <https://ocean7projects.com>



DAMEN Combi Freighter 3850

MAIN DIMENSIONS

Length o.a.	89.83 m
Length b.p.p.	84.96 m
Beam mtk	12.50 m
Summer draught	5.48 m
Depth to maindeck at side	7.00 m
Deadweight at 5.48 m approx.	3800 ton
Gross tonnage approx.	2518 GT

TANK CAPACITIES

Ballast water	approx.	1325 m ³
Fuel oil	approx.	225 m ³
Potable water	approx.	60 m ³
Sewage	approx.	12 m ³
Lubrication oil	approx.	9 m ³
Dirty oil	approx.	4 m ³
Sludge	approx.	4 m ³
Cool water drain	approx.	2.5 m ³
Bilge water	approx.	2.5 m ³
Urea	approx.	12 m ³

CARGO CAPACITIES

Hold Capacity	approx.	5250 m ³
Hold Capacity	approx.	165400 cuft
Containers in hold (with dunnage)		108 TEU
Containers on hatches		64 TEU
Total		172 TEU

B01 28-10-2021	BBOL	Improvement list updated		
A01 20-10-2021	BBOL	Initially created		
Rev.	Drawn	Checked	Flashed	Issued
Production	AG-J			
Scale	1:100			
Units	mm			

DAMEN SHIPYARDS GROUP

General Arrangement Plan

Doc Id:	DRAW-2D	Drawn:	BBOL	Derived from:		Date:	20-10-2021
Project No.:		Function:	000	Sequence:		Checked:	
Yard No.:		Section/Compartment:		Document number:		Sheet:	B01
Rev.:		COMP/PROJ/DAMEN SHIPYARDS GROUP		4810736		1	B01