



'Eco Freighter 5200XL'

Valid as of 22 Jun 2023

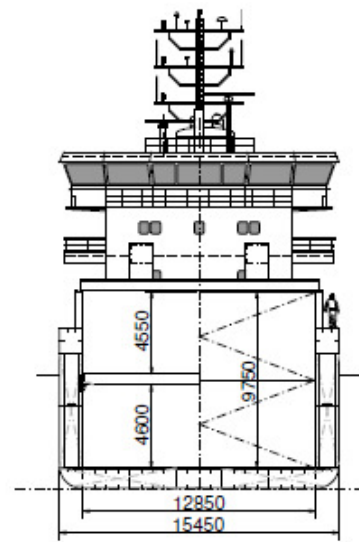
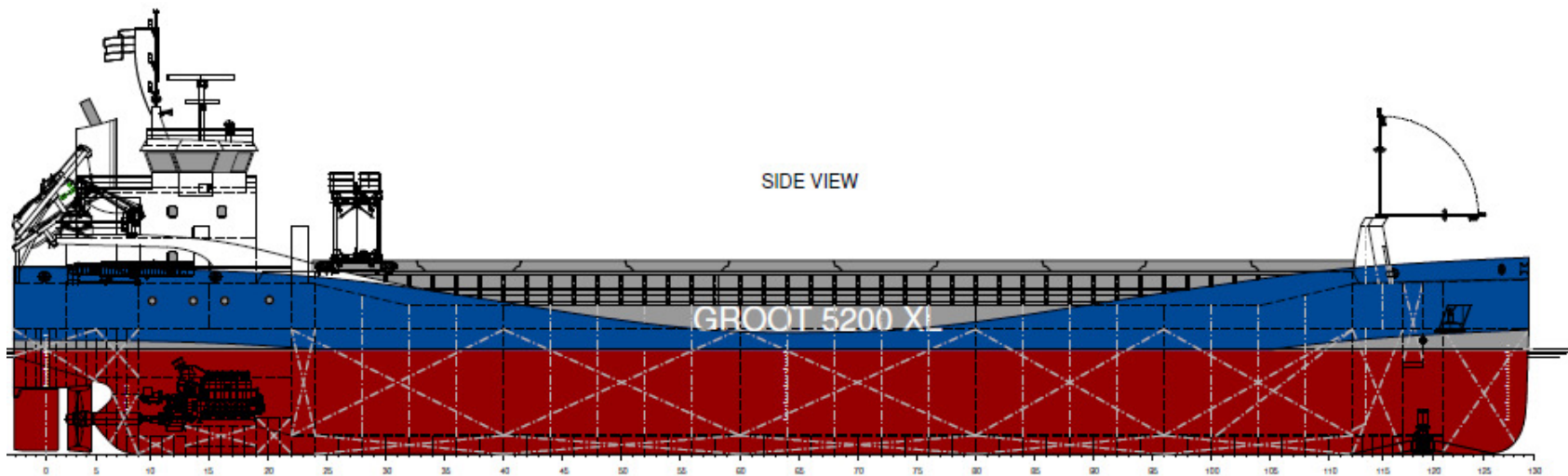
Vessel's name	Call sign	IMO no.	Flag state	Port of registry	Class	P&I Club	Expected delivery
JSP Løjt	CQUK	9968138	Portugal	Madeira	DNV	Alandia	Delivered
Ærø	CQVG	9968140	Portugal	Madeira	DNV	Alandia	Delivered
JSP Falster	CQUM	9968152	Portugal	Madeira	DNV	Alandia	Delivered
Als	CQVH	9968164	Portugal	Madeira	DNV	Alandia	Delivered
JSP Møn		9968176			DNV		
Fyn		9968188			DNV		
UTE B.		9968255			DNV		
JSP Tornø		9968190			DNV		
Anholt		9968205			DNV		
JSP Samsø		9968217			DNV		
Birkholm		9968229			DNV		
JSP Halmø		9968231			DNV		
Langeland		9968243			DNV		
Bornholm		9968267			DNV		

Class	DNV	Deck loads	
Class notation	✕ 1A Multi-purpose dry cargo ship BIS BWM(T) Clean DBC DG(B, P) E0 Grab(2-20t) Ice(1A) LCS NAABSA NAUT(NAV) Strengthened(IB) TMON(oil lubricated) ER(SCR)	Tank top	15,0 mt/m ²
Tonnage		Tween deck pontoons	2,5 mt/m ²
DWAT	5.200 mt	Hatch covers	2,0 mt/m ²
DWCC	Abt. 5.000 mt	Steel coils	40,0 mt in patterns
Gross tonnage	3.952	Hatch covers/Tween deck	
Net tonnage	1.923	Type of hatch covers	10 pontoons moveable by own gantry
Dimensions		Tween deck pontoons	4 pcs. each 4,87 m long moveable in length of hold can be used as two grain bulkheads.
Length over all	89,98 m	Open top condition	No
Length between p.p.	88,06 m	Propulsion/Manoeuvring	
Breadth over all	15,45 m	Main Engine	2.100 kW
Breadth moulded	15,45 m	Bow thruster	300 kW
Summer draught	6,20 m	Shaft generator	330 KWe
Depth moulded	8.80 m	Propeller	CP (in nozzle)
Ballast draft to top mast	24,72 m	Rudder	Free hanging balance spade
Hold/hatch sizes		Service speed	10,5 kn
Number of holds/hatches	1/1	Bunkers/Ballast capacity	
Hold capacity	About 7.645 m ³ /270.000 ft ³	LSMGO	165 m ³
Hold dimensions	61,60 x 12,85 m (narrow fwd)	Fresh water	35 m ³
Tween deck dimensions	19,48 x 12,85 m (4 pont. only)	Ballast water	2.045 m ³
Hatch cover dimensions	61,60 x 13,15 m	Cargo gear	Gearless
Hatch cover area	810 m ²		
Hold height	9,75 m		
Tank top -> Tween deck	4,60 m		
Tween deck -> Hatch cover	4,55 m		
Hold floor surface	765 m ²		
Container capacity	None		
IMO class 1.1-1.6	On deck only		
Class 1.4S	On deck and in hold		

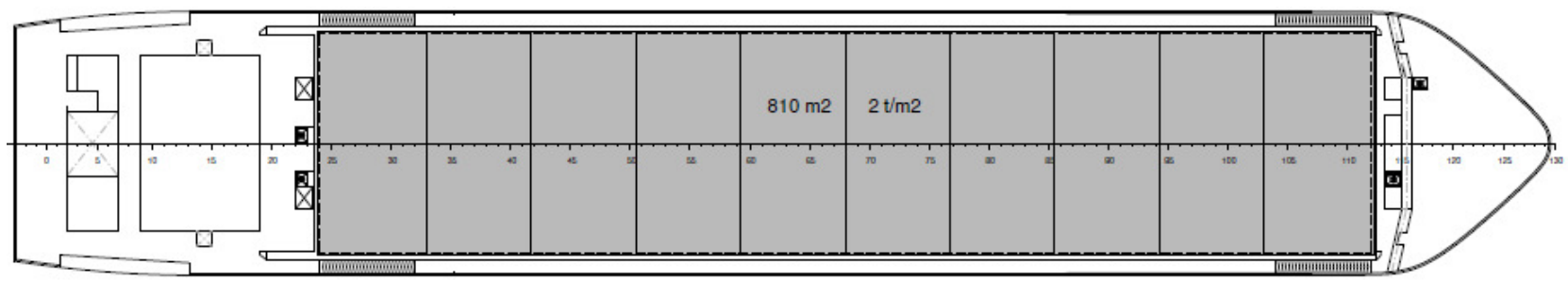
All details are believed to be correct but without guarantee/HWS

OCEAN7 Projects ApS
Jyllandsgade 19A
DK-7000 Fredericia
Denmark

Phone: +45 7070 1311
E-mail: europe@ocean7projects.com



HATCHCOVERS



TANKTOP

