

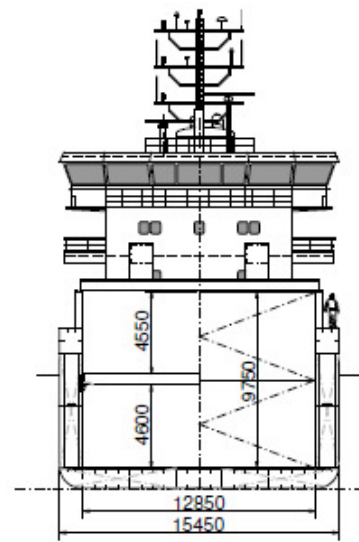
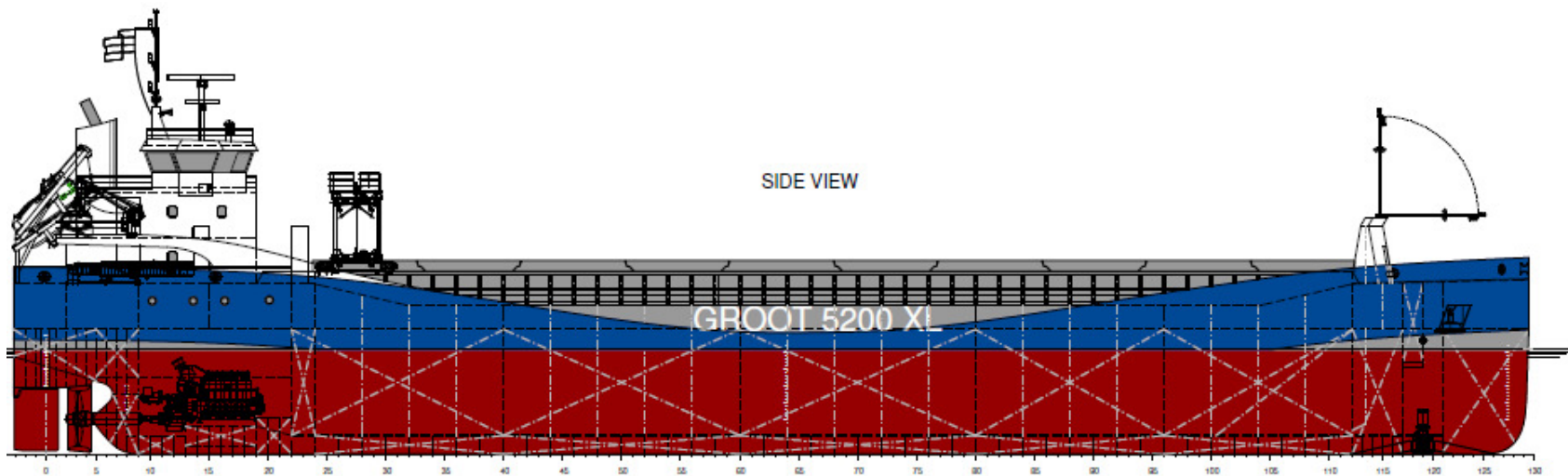


'Eco Freighter 5200XL'

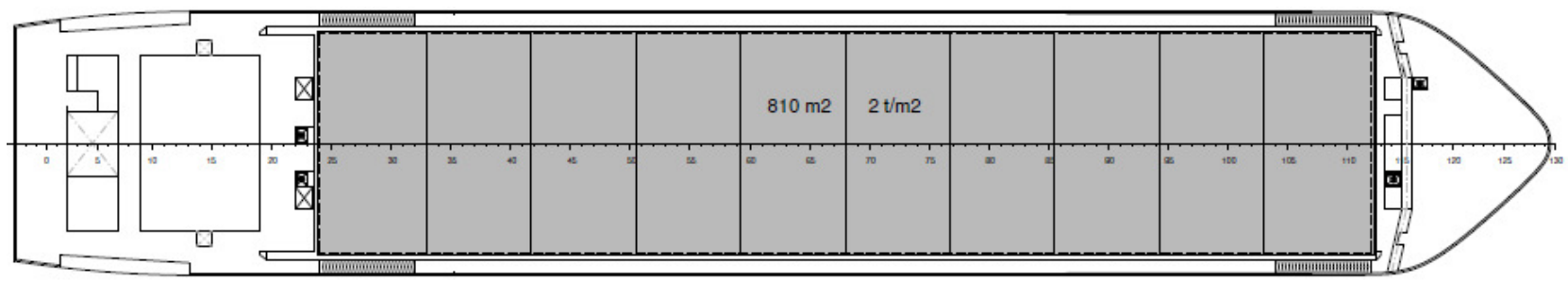
Valid as of 03 Jan 2024

Vessel's name	Call sign	IMO no.	Flag state	Port of registry	Class	P&I Club	Expected delivery
JSP Løjt	CQUK	9968138	Portugal	Madeira	DNV	Alandia	Delivered
Ærø	CQVG	9968140	Portugal	Madeira	DNV	Alandia	Delivered
JSP Falster	CQUM	9968152	Portugal	Madeira	DNV	Alandia	Delivered
Als	CQVH	9968164	Portugal	Madeira	DNV	Alandia	Delivered
JSP Møn	CQUN	9968176	Portugal	Madeira	DNV	Alandia	Delivered
Fyn	CQVJ	9968188	Portugal	Madeira	DNV	Alandia	Delivered
UTE B.		9968255			DNV		
JSP Tornø	CQUO	9968190	Portugal	Madeira	DNV	Alandia	Delivered
Anholt	CQVP	9968205	Portugal	Madeira	DNV	Alandia	Delivered
JSP Samsø		9968217			DNV		
Birkholm		9968229			DNV		
JSP Halmø		9968231			DNV		
Langeland		9968243			DNV		
Bornholm		9968267			DNV		

<p>Class Class notation</p> <p>Tonnage DWAT DWCC Gross tonnage Net tonnage</p> <p>Dimensions Length over all Length between p.p. Breadth over all Breadth moulded Summer draught Depth moulded Ballast draft to top mast</p> <p>Hold/hatch sizes Number of holds/hatches Hold capacity Hold dimensions Tween deck dimensions Hatch cover dimensions Hatch cover area Hold height Tank top -> Tween deck Tween deck -> Hatch cover Hold floor surface</p> <p>Container capacity</p> <p>IMO class 1.1-1.6 Class 1.4S</p>	<p>DNV ✘ 1A Multi-purpose dry cargo ship BIS BWM(T) Clean DBC DG(B, P) E0 Grab(2-20t) Ice(1A) LCS NAABSA NAUT(NAV) Strengthened(IB) TMON(oil lubricated) ER(SCR)</p> <p>5.200 mt Abt. 5.000 mt 3.952 1.923</p> <p>89,98 m 88,06 m 15,45 m 15,45 m 6,20 m 8.80 m 24,72 m</p> <p>1/1 About 7.645 m³/270.000 ft³ 61,60 x 12,85 m (narrow fwd) 19,48 x 12,85 m (4 pont. only) 61,60 x 13,15 m 810 m² 9,75 m 4,60 m 4,55 m 765 m²</p> <p>None</p> <p>On deck only On deck and in hold</p>	<p>Deck loads Tank top Tween deck pontoons Hatch covers Steel coils</p> <p>Hatch covers/Tween deck Type of hatch covers Tween deck pontoons Open top condition</p> <p>Propulsion/Manoeuvring Main Engine Bow thruster Shaft generator Propeller Rudder Service speed</p> <p>Bunkers/Ballast capacity LSMGO Fresh water Ballast water</p> <p>Cargo gear</p> <p>15,0 mt/m² 2,5 mt/m² 2,0 mt/m² 40,0 mt in patterns</p> <p>10 pontoons moveable by own gantry 4 pcs. each 4,87 m long moveable in length of hold can be used as two grain bulkheads. No</p> <p>2.100 kW 300 kW 330 KWe CP (in nozzle) Free hanging balance spade 10,5 kn</p> <p>165 m³ 35 m³ 2.045 m³</p> <p>Gearless</p>
<p><i>All details are believed to be correct but without guarantee/HWS</i></p> <p>Phone: +45 7070 1311 E-mail: europe@ocean7projects.com Web: ocean7projects.com</p>		



HATCHCOVERS



TANKTOP

