



## M/V 'FWN SOLIDE'

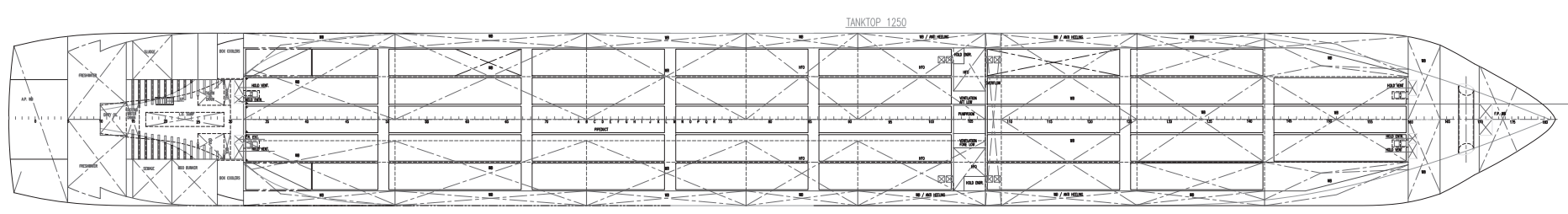
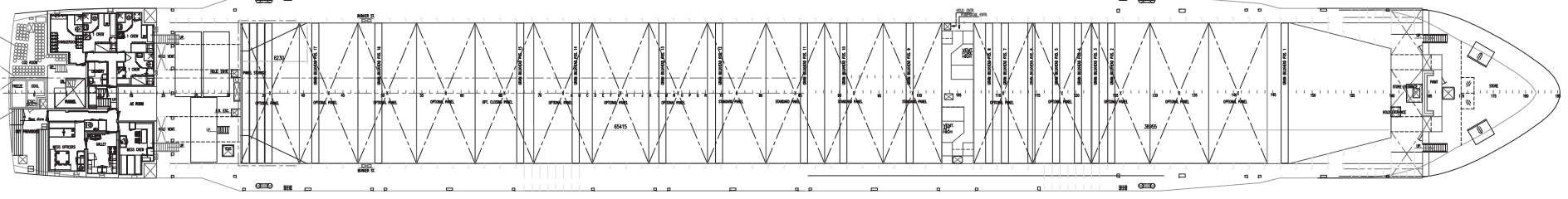
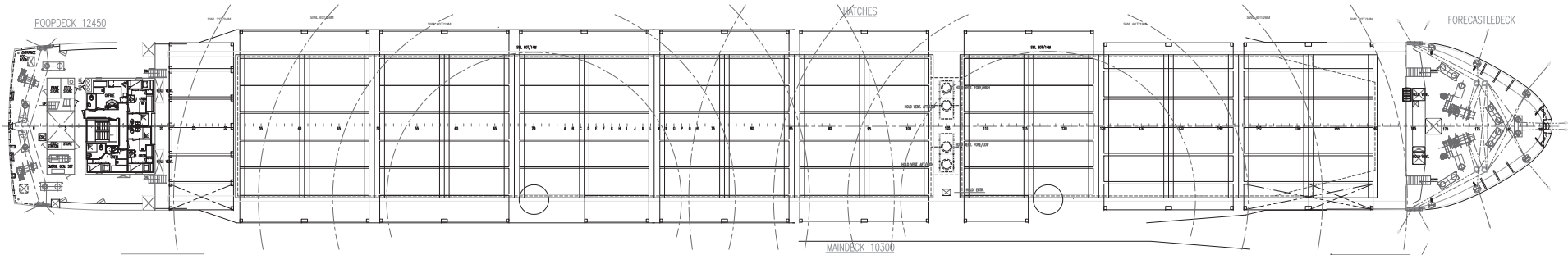
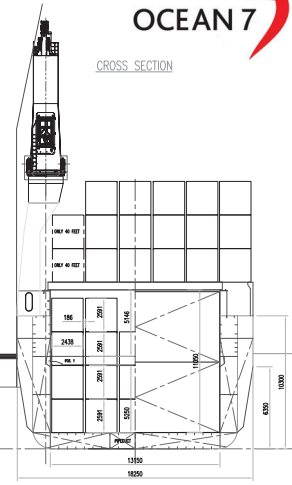
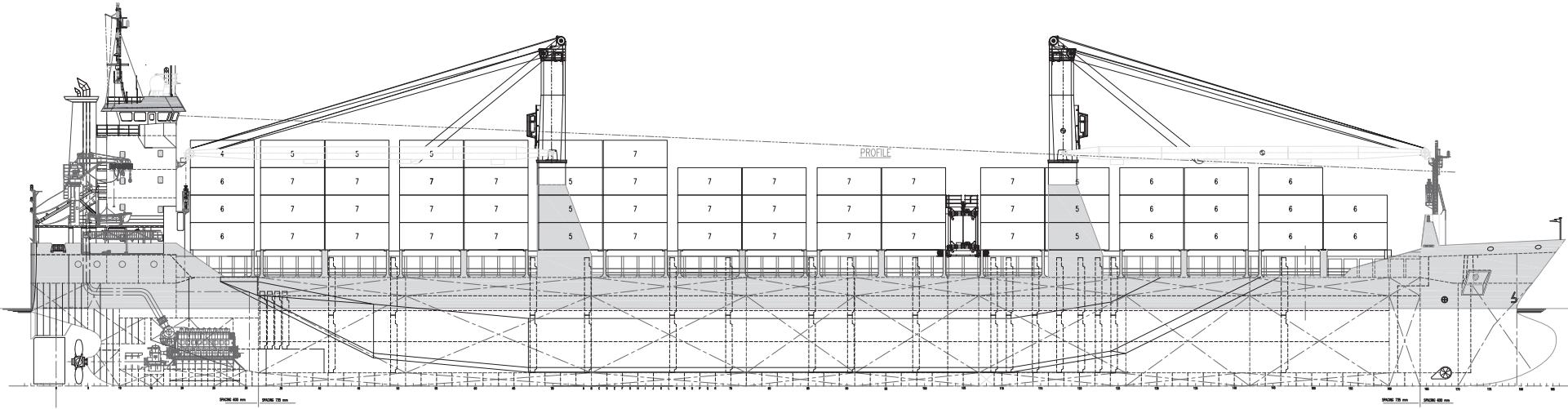
Valid as of 30 Aug 2024

<b>Registration</b>	
Call sign	PBOJ
IMO number	9321093
Port of registry	Heerenveen
Flag state	Netherlands
Shipyard	Damen Shipyards
Year/Place of delivery	2006
Class	Lloyds Register
Class notation	✕100A1 Cont. cargoes in Hold and Upper Deck Hatch Cover Strength. for Heavy Cargoes LI, *IWS ✕LMC, BWTS* Ice class 1A FS
P&I Club	Tba
<b>Tonnage</b>	
DWAT	10.500 mt
DWCC	Abt. 9.800 mt
Gross tonnage	7.767
Net tonnage	3.856
<b>Dimensions</b>	
Length over all	145,63 m
Length between p.p.	138,82 m
Breadth over all	18,25 m
Breadth moulded	18,25 m
Summer draught	7,35 m
Depth moulded	10,30 m
Height keel to top mast	39,70 m
<b>Hold/hatch sizes</b>	
Number of holds/hatches	2/2
Hold capacity	About 14.878 m <sup>3</sup> /525.412 ft <sup>3</sup>
#1 hold dimensions	38,95 x 13,15 m (narrowing last 9,43 m fwd)
#2 hold dimensions	65,41 x 13,15 m (narrowing last 4,21 m aft)
Hatch cover dimensions	38,95 + 65,41 x 13,15 m
Height under/above TD	5,25/5,14 m
Hold height	11,05 m
Tank top floor surface	1.327 m <sup>2</sup>
Tween deck floor surface	1.218 m <sup>2</sup>
Deck floor surface	1.408 m <sup>2</sup>
<b>Container capacity</b>	
Hold capacity	302 TEU
Deck capacity	363 TEU (60 reefer)
Total	665 TEU
Stack weight TEU/FEU	Tanktop: 100/140 mt Tween deck: 35/54 mt Hatchcovers: 28/48 mt
IMO class 1.1-1.6	Hold # 1 and deck only
1.4S	All holds and deck

<b>Deck loads</b>	
Tanktop	18,00 mt/m <sup>2</sup>
Tween deck pontoons	3,50 mt/m <sup>2</sup>
Hatch covers	1,75 mt/m <sup>2</sup>
<b>Hatch covers/Tween deck</b>	
Type of hatch covers	17 pontoons Moveable by own gantry
Tween deck pontoons	17 panels 8 can be used as bulkheads
Open top condition	Yes
<b>Propulsion/Maneuvering</b>	
Main Engine	4.320 kW
Bow thruster	400 kW
Shaft generator	680 kW
Propeller	CPP
Rudder	Balanced
Service speed	12,0 kn
<b>Bunkers/Ballast capacity</b>	
Heavy fuel oil	425 m <sup>3</sup>
Marine gas oil	212 m <sup>3</sup>
Fresh water	76 m <sup>3</sup>
Ballast water	4.888 m <sup>3</sup>
<b>Cargo gear</b>	
Cranes on stb. side	2 x hydraulic x 80 mt SWL
Load/Outreach	80 mt/6,0-14,0 m 60 mt/6,0-19,0 m 40 mt/2,5-26,0 m 32 mt/2,5-34,0 m
Tandem load	160 mt SWL
Lifting beam on board	None
Spreader beams on board	None
<b>Lifting heights</b>	

*All details are believed to be correct but without guarantee/HWS*

Phone: +45 70 70 13 11  
E-mail: [europa@ocean7projects.com](mailto:europa@ocean7projects.com)  
Web: <https://ocean7projects.com>



**COMPLETED 14500**

Bayhead Position	Frame	Distance Frame 0
No. 1	146	100360
No. 2	124	84740
No. 3	122	83320
No. 4	120	81900
No. 5	117	79770
No. 6	114	77640
No. 7	110.5	80127
No. 8	108.5	80657
No. 9	98.5	81307
No. 10	90	80600
No. 11	85	87050
No. 12	74.5	83667
No. 13	1	88155
No. 14	a	80070
No. 15	67	44270
No. 16	48	31480
No. 17	41	26810

- MCO : 60 m<sup>3</sup>
- Freeliner : 75 m<sup>3</sup>
- Ballastwater : 4887 m<sup>3</sup>
- Containers in hold : 302 TEU
- Containers on deck : 363 TEU
- Total containers : 665 TEU

Performance approx.  
 Speed 14.2 knots at 7,347 m design draft with  
 90% MCR output, 3888 kW  
 Main engine: 4220 kW at 600 rpm.

**DAMENSHIPWARDS** SHIP CARGO VESSELS

P.O. Box 1 - 4200 AA Gortichem - Holland  
 Tel: +31 (0) 51 93 99 33 - Fax: +31 (0) 51 94 68  
 Telex: 21195 Compnl

SCALE: 1:150  
 DATE: 11-11-2003  
 DRAWN BY: DSCV  
 APPROVED:

TITLE: GENERAL ARRANGEMENT  
 DRAWING NO.: 0840-000-001