



Ship's particulars



M/V 'GALA'

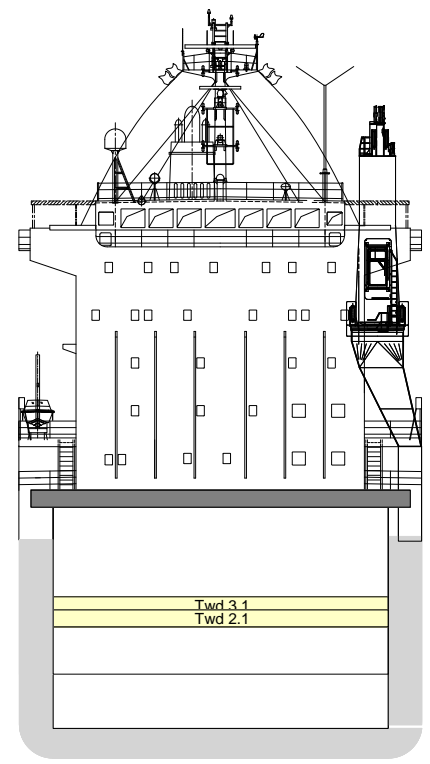
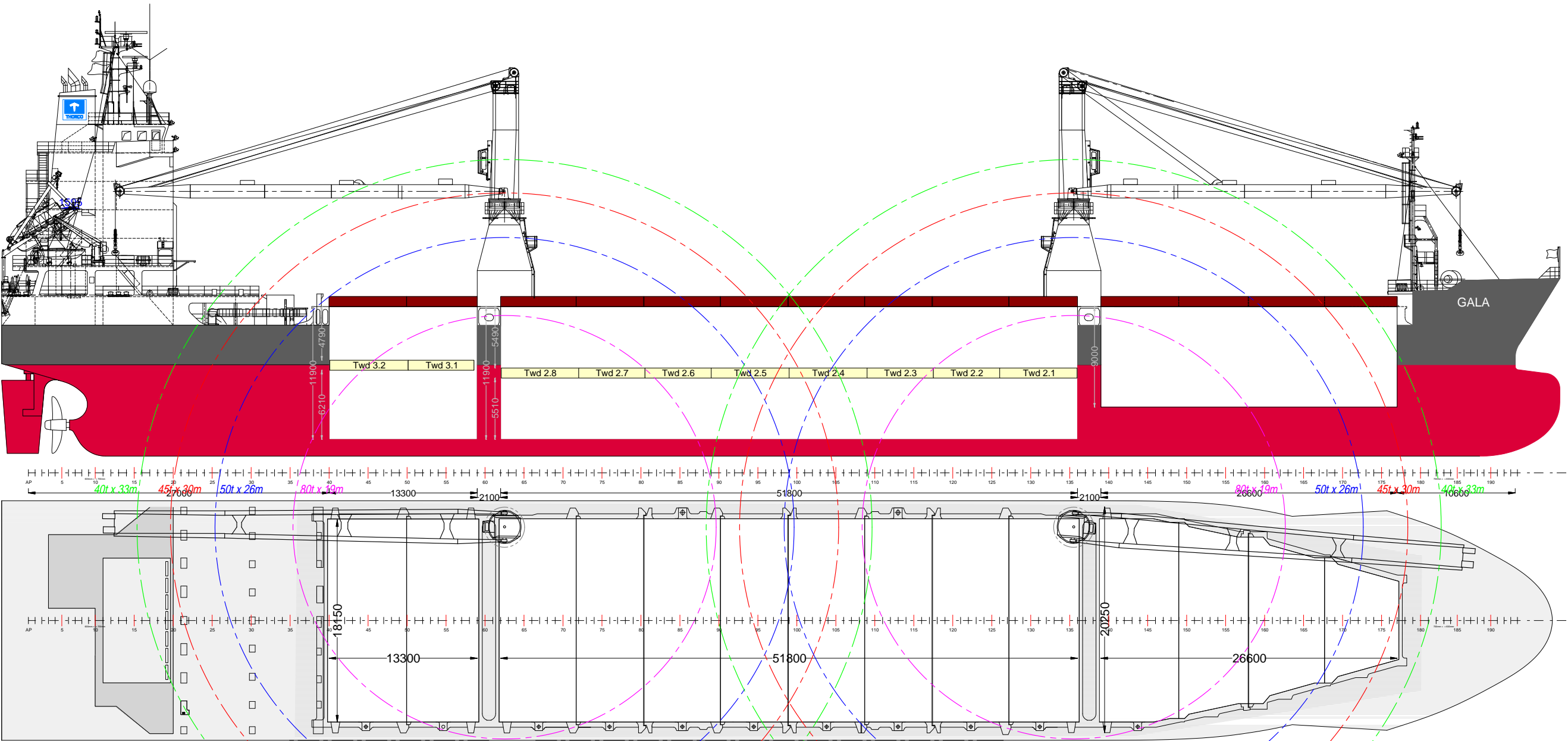
Valid as of 13 Jul 2023

Registration		Deck loads	
Call sign	D5ST8	Tanktop	18,00 mt/m ²
IMO number	9304461	Tween deck pontoons	3,50 mt/m ²
Port of registry	Monrovia	Hatch covers	3,50 mt/m ²
Flag state	Liberia		
Shipyard	Kyokuyo Shipyard	Hatch covers/Tween deck	
Year/Place of delivery	2005/Japan	Type of hatch covers	4/8/2 pontoons
Class	Lloyd's Register	#1 Tween deck pontoons	None
Class notation	✕100 A1 Strengthened for heavy cargo, cont. in all holds upper deck and hatch covers, LI, Ice Class 1C FS.	#2 Tween deck pontoons	8 pontoons
	✕LMC, UMS, BWTS	#3 Tween deck pontoons	2 pontoons
P&I Club	North of England	Propulsion/Manoeuvring	
		Main Engine	8.200 kW
Tonnage		Bow thruster	500 kW
DWAT	12.578 mt		
DWCC	Abt. 11.500 mt	Propeller	Fixed blades
Gross tonnage	9.990	Rudder	Balanced
Net tonnage	4.483	Service speed	12,5 kt
Dimensions		Bunkers/Ballast capacity	
Length over all	139,95 m	Heavy fuel oil	998 m ³
Length between p.p.	133,76 m	Marine gas oil	222 m ³
Breadth over all	21,50 m	Fresh water	163 m ³
Breadth moulded	21,50 m	Ballast water	4.815 m ³
Summer draught	8,42 m		
Depth moulded	11,65 m	Cargo gear	
Height keel to top mast	40,20 m	Cranes on port side	2 x electrohydraulic x 80 mt
Hold/hatch sizes		Load/Outreach	40 mt/33 m
Number of holds/hatches	3/3		45 mt/30 m
Hold capacity	About 17.014 m ³ /600.869 ft ³		50 mt/26 m
#1 hatch	26,60 x 7,00/20,25 m		80 mt/19 m
#2 hatch	51,80 x 18,15 m	Tandem load	160 mt SWL
#3 hatch	13,30 x 18,15 m	Lifting beam on board	1 (one) WLL 144 mt
#1 tween deck	26,60 x 7,00/17,90 m	Spreader beams on board	
#2 tween deck	51,80 x 17,90 m		
#3 tween deck	13,30 x 17,90 m		
#1 hold	26,60 x 5,32/17,90 m		
#2 hold	51,80 x 17,90 m		
#3 hold	13,30 x 17,90/12,80 m		
# 1/#2/#3 hold heights	9,00*/11,90*/11,90* m		
#2 Height TT->TD->HC	5,51*/5,49* m		
#3 Height TT->TD->HC	6,21*/4,79* m		
*	Less 0.15 m for stacking cone		
Container capacity			
Hold capacity	306 TEU		
Deck capacity	460 TEU (117 reefer)		
Total	766 TEU		
Stack weight TEU/FEU	Tank top 120/160 mt		
	Hatch covers 60/90 mt		
IMO class 1.1-1.6	Hold # 1 and deck only		
1.4S	All holds and deck		

All details are believed to be correct but without guarantee/HWS

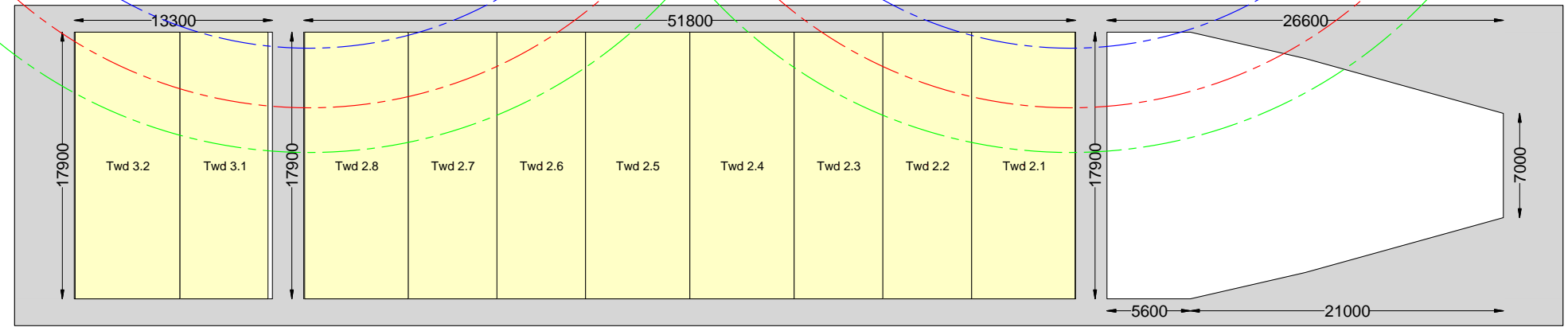
OCEAN7 Projects ApS
Jyllandsgade 19A
DK-7000 Fredericia
Denmark

Phone: +45 7070 1311
E-mail: europe@ocean7projects.com

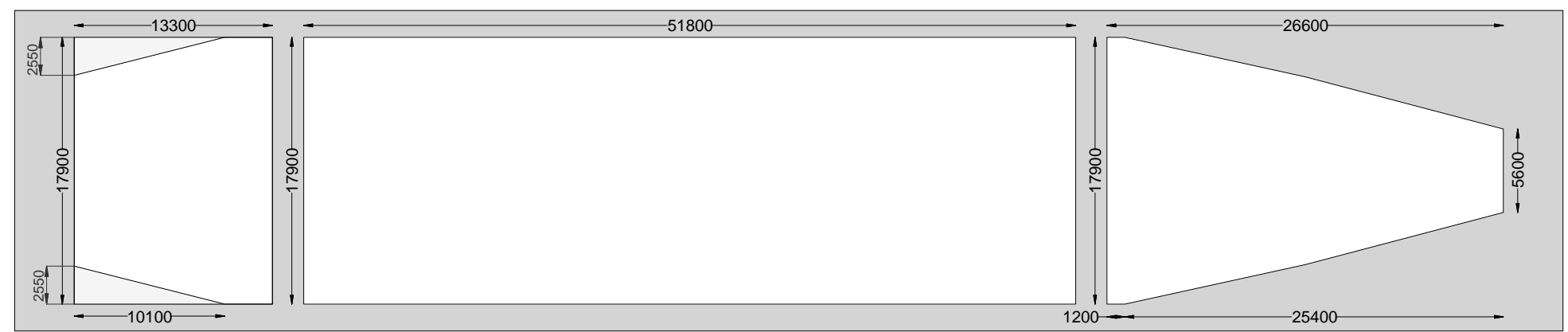


All overview Aft

Top view at 26.6m ab Base line



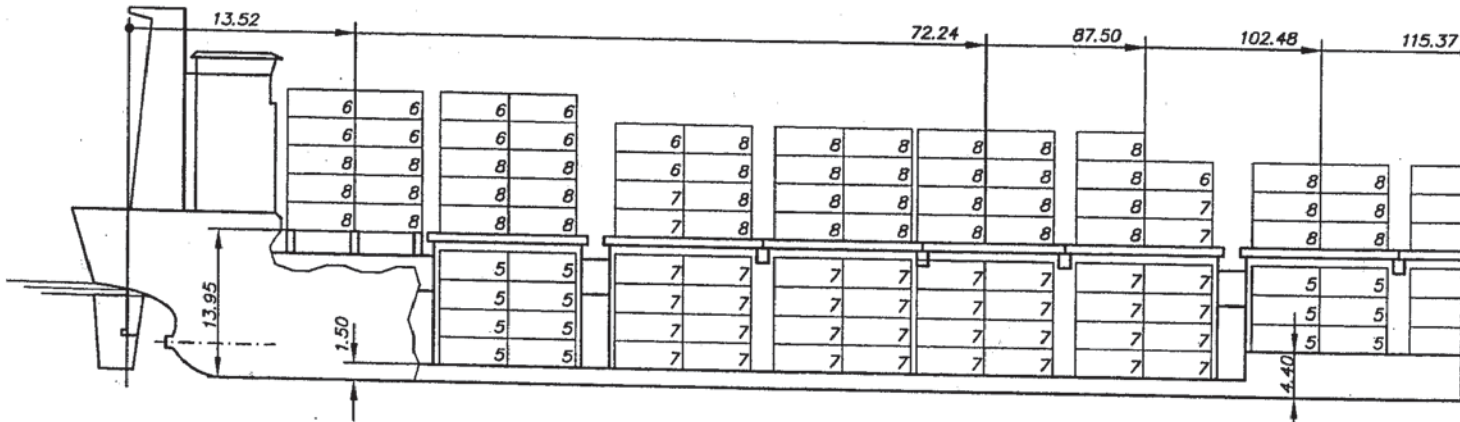
Top view at 12.76m ab Base line



Top view at 6.67m ab Base line

31	29	27	25	23	21	19	17	15	13	11	09	07	05	03	01	20'DAY
30		26		22		18		14		10		06				

OCEAN 7



EXAMINED

This plan has been examined and given approval in the Design Appraisal Document (DAD) numbered below

DAD Numbered **SST 1 4 6 9 9 - 0 7**

Date: **01 JUL 07** Initials **GE**

Hamburg Design Support Centre
Lloyd's Register EMEA

36	36	36	36	26	32	32	32	32	20	24	24	18	12	20' CONT.	DECK	460
36		36		26(6)	32	32	32	20(12)	24	24	12(6)	40' CONT (20')	218 (24)			

20	20	28	28	28	28	28	28	15	15	9	3	20' CONT.	HOLD	306
20		28	28	28	28	28	15	15	3(6)	40' CONT (20')	150 (6)			

CONTAINER CAPACITY	20' CONT.	TOTAL	766
	40' CONT (20')		368 (30)

MAIN DIMENSIONS

LENGTH BETWEEN PP.	133.50 m
BREADTH MOULDED	21.50 m
DEPTH MOULDED TO MAINDECK	11.65 m
DESIGNED DRAUGHT	8.40 m
GM PERMISSIBLE / ANGLE OF ROLL	≤ 0.90 m/27.8°
GM PERMISSIBLE / ANGLE OF ROLL	≤ 1.00 m/30°
GM PERMISSIBLE / ANGLE OF ROLL	≤ 1.50 m/30°
GM PERMISSIBLE / ANGLE OF ROLL	≤ 2.00 m/30°
GM PERMISSIBLE / ANGLE OF ROLL	≤ 2.50 m/30°
CLASS OF VESSEL	LR

MAX. STACKLOAD DEPENDING ON STRENGTH OF SHIP'S/HATCHCOVER'S STRUCTURE

	20'CONT.	40'CONT.
DECK	60t	90t
HOLD	see page 23	

SIZE OF CONTAINER
20'x8'x8'6"
40'x8'x8'6"

SPACES BETWEEN CONTAINERS
DECK= 87 mm
HOLD= 87 mm

Copying of this document, and giving it to others and the use or communication of contents thereof, are forbidden without express authority. Offenders are liable to the payment of damage. All rights reserved in the event of the grant of patent or registration a utility model or design. © MacGregor Conver GmbH

				MacGREGOR	CONTAINER STOWAGE PLAN DECK-HOLD	22971-A-01
Index	Modification	Date	Name	08.05.2007/MLG	Kyokuyo SY Nb.455-458	Sheet 01/