



## M/V 'GRETA'

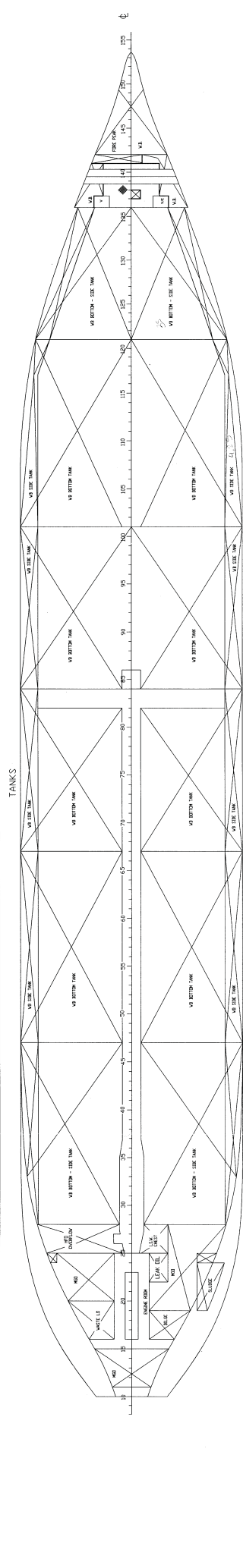
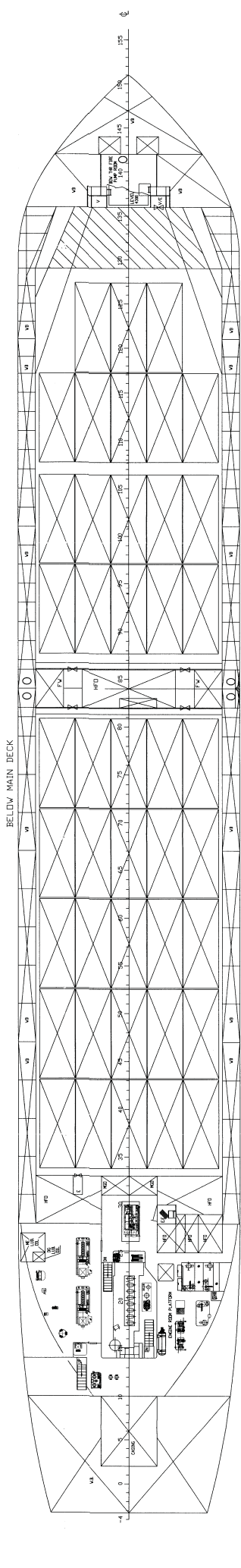
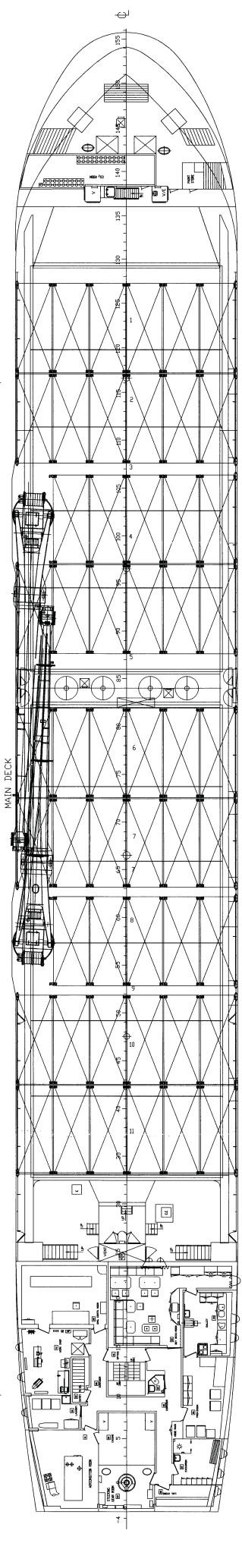
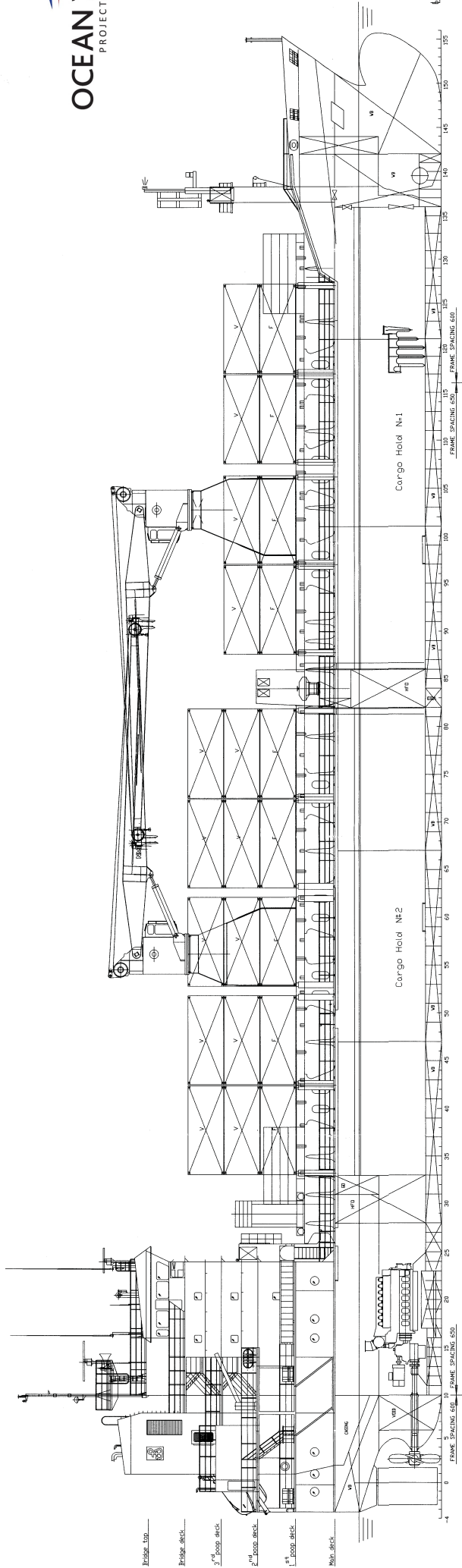
Valid as of 09 Jun 2021

<b>Registration</b>	V2CZ5	<b>Deck loads</b>	
Call sign	9344382	Tanktop	15,0 mt/m <sup>2</sup>
IMO number	St. John's	Tween deck pontoons	2,0 mt/m <sup>2</sup>
Port of registry	Antigua & Barbuda	Hatch covers	1,7 mt/m <sup>2</sup>
Flag state	Rousse Shipyard J.S.C.		
Shipyard	2007/Bulgaria	<b>Hatch covers/Tween deck</b>	
Year/Place of delivery	Lloyd's Register EMEA	Type of hatch covers	5 + 6 removable pontoons
Class	†100A1, Strengthened for Heavy Cargoes, Cont. in all Holds and on deck, LI, Ice Class 1C FS, max 5,82m min 3,10/3,30 m, †LMC, UMS	Tween deck pontoons	#1: 1 fixed forward + 5 removable pontoons #2: 6 removable pontoons Operated by own gantry crane (SWL 17 mt)
Class notation			
P&I Club	North of England P&I	<b>Propulsion/Maneuvering</b>	
<b>Tonnage</b>		Main Engine	2400 kW
DWAT	4500 mt	Shaft generator	440 kW
DWCC	Abt. 4000 mt	Bow thruster	220 kW
Gross/net tonnage	3642/1790	Propeller	Controllable pitch propeller
		Rudder	Semi balanced
<b>Dimensions</b>		Service speed	12,0 kn
Length over all	100,71 m	<b>Bunkers/Ballast capacity</b>	
Length between p.p.	95,20 m	Heavy fuel oil	317 m <sup>3</sup>
Breadth over all/moulded	15,20 m	Marine gas oil	48 m <sup>3</sup>
Summer draught	5,62 m	Fresh water	49 m <sup>3</sup>
Depth moulded	7,30 m	Ballast water	2325 m <sup>3</sup>
Height keel to top mast	28,85 m		
<b>Hold/hatch sizes</b>		<b>Cargo gear</b>	
Number of holds/hatches	2/2	Cranes on port side	2 x NMF 60 mt SWL
Hold capacity	About 6.458 m <sup>3</sup> /230.000 ft <sup>3</sup>	Load/Outreach	60 mt/2,4 - 14,0 m 35 mt/2,4 - 22,5 m
#1 Hatch dimension	27,60 x 13,10 m		
#1 Lower hold dimensions	31,40 x 12,78 m. Narrow forward after 23,2m to 10,3m breadth on 3,94m length (fixed TD). Thereafter narrow fore/under stow to 5,0 m breadth on last 4,20 m	Tandem load	120 mt SWL
		Lifting beam on board	None
#2 Hatch dimension	32,20 x 13,10 m	Spreader beams on board	None
#2 Lower hold dimensions	31,85 x 12,78 m		
		<b>Lifting heights</b>	
Hold height	8,34 m	At 2,4 m outreach	36,0 m
Heights above T/D	4,50 or 3,50 m	At 14,0 m outreach	31,0 m
Heights below T/D	3,30 or 4,30 m	At 22,5 m outreach	12,3 m
Heights at fixed TD	1,64 m above/3,30 m below		
Hold floor surface	Abt 700 m <sup>2</sup>		
Deck floor surface	Abt 760 m <sup>2</sup>		
<b>Container capacity</b>			
Hold capacity	129 TEU		
Deck capacity	133 TEU (20 reefer)		
Total	260 TEU		
Stack weight TEU/FEU	Tanktop: 80/80 mt Hatchcovers: 40-42,5/61-64,5		
TEU slots for IMO class 1	All deck and holds		

*All details are believed to be correct but without guarantee/HWS*

OCEAN7 Projects ApS  
Jyllandsgade 19A  
DK-7000 Fredericia  
Denmark

Phone: +45 7070 1311  
E-mail: europe@ocean7projects.com



# m/v "GRETA"

