



M/V 'HC Opal'

Valid as of 09 Oct 2023

Registration	
Call sign	V2FF9
IMO number	9377846
Port of registry	St. John's
Flag state	Antigua & Barbuda
Shipyard	Daehan Shipbuilding Co. Ltd.
Year/Place of delivery	2010/
Class	DNV
Class notation	☒ 100 A5 Multi-purpose drv cargo ship. Equip. for carr. of contr. DBC DG G IW Strengthened for heavy cargo ☒ MC AUT TMON(oil lubric.)
P&I Club	Steamship Mutual
Tonnage	
DWAT	10.840 mt (incl. tween decks)
DWCC	Abt. 10.000 mt
Gross tonnage	8.395
Net tonnage	4.196
Dimensions	
Length over all	129,50 m
Length between p.p.	120,60 m
Breadth over all	19,00 m
Breadth moulded	19,00 m
Summer draught	8,70 m
Depth moulded	11,65 m
Height keel to top mast	37,89 m
Hold/hatch sizes	
Number of holds/hatches	2/2
Hold capacity	About 14.240 m ³ /502.790 ft ³
#1 Lower hold dimensions	18,80 x 10,10/5,10 m
#1 Tween deck dimensions	18,80 x 15,40/10,10/5,10 m
#1 T/T>T/D>H/C	5,98/6,68 m
#1 Hold height	13,45 m
#2 Hold dimensions	58,20 x 15,60 m
# 2 Pos. top T/T>T/D>H/C	7,90/3,25 m
# 2 Pos. bottom T/T>T/D>H/C	5,35/5,84 m
#2 Hold height	11,95 m
Hold (T/T + T/D) floor surface	About 2.290 m ²
Deck floor surface	About 1.151 m ²
Container capacity	
Hold capacity	272 TEU
Deck capacity	400 TEU (60 reefer)
Total	672 TEU
Stack weight TEU/FEU	51 mt/65 mt (hatch cover) 40 mt/65 mt (tween decks) 96 mt/120 mt (hold)
TEU slots for IMO class 1.1-1.6	On deck only
Class 1.4S	On deck and in both holds

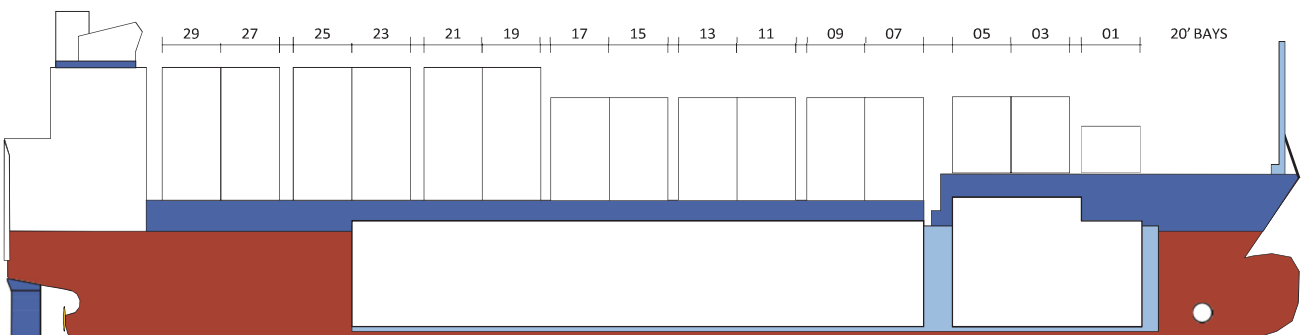
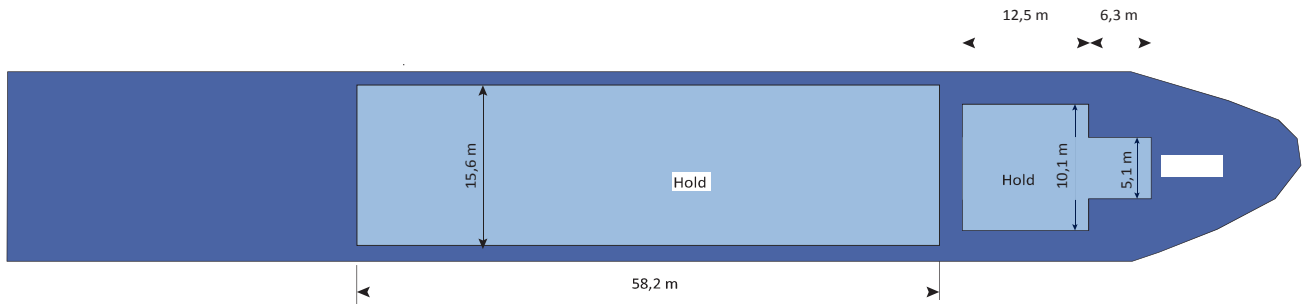
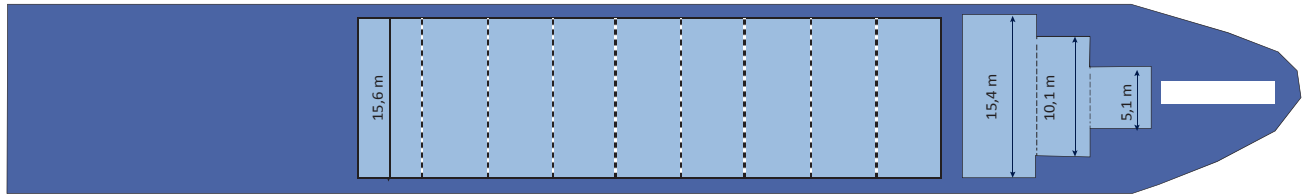
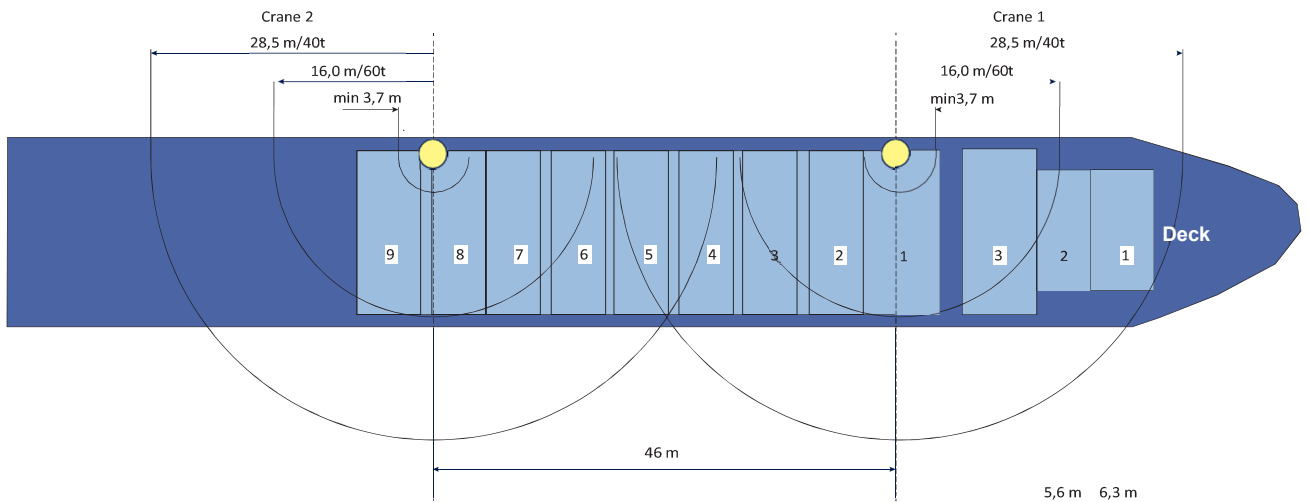
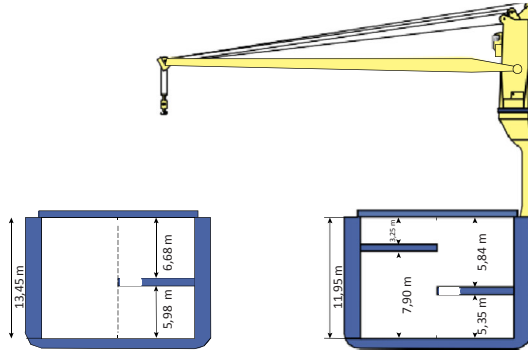
Deck loads	
Tank top	18,0 mt/m ²
Tween deck pontoons	4,0 mt/m ²
Hatch covers	2,0 mt/m ²
Hatch covers/Tween deck	
Type of hatch covers	3 + 9 pontoons
Tween deck pontoons	3 + 9
	Tween decks can be set as moveable bulkheads
Propulsion/Maneuvering	
Main Engine	5.400 kW
Bow thruster	500 kW
Propeller	Controllable pitch propeller
Rudder	Balanced
Service speed	13,5 kn
Bunkers/Ballast capacity	
Fuel oil (VLSIFO)	771 m ³
Marine oil (MDO)	124 m ³
Fresh water	150 m ³
Ballast water	4.450 m ³
Cargo gear	
Cranes on port side	2 x Liebherr x 60 mt SWL
Load/Outreach	60 mt/3,70-16,0 m 40 mt/3,70-28,5 m
Tandem load	120 mt SWL
Lifting beam on board	1 x 18,0 m, 120 mt SWL
Modular beams on board	2 x 4,2 m, 55 mt SWL

Lifting heights

All details are believed to be correct but without guarantee/HWS

Phone: +45 70 70 13 11
E-mail: europe@ocean7projects.com
Web: ocean7projects.com

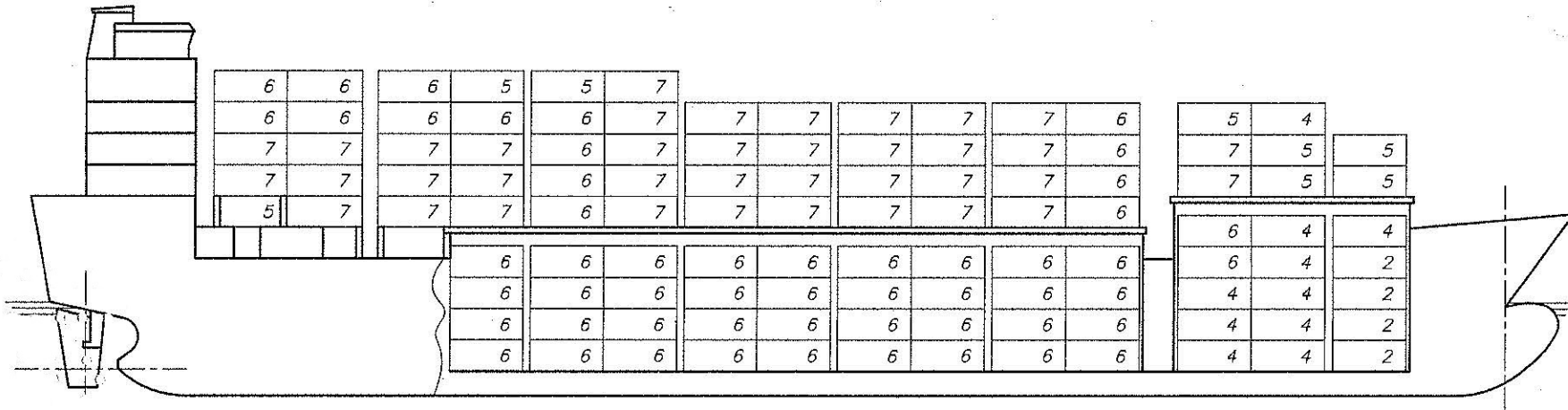
HC Opal



Container plan m/v HC Opal



29	27	25	23	21	19	17	15	13	11	09	07	05	03	01	20' BAY
28		24		20		16		12		08		04		-	40' BAY



31	33	33	32	29	35	28	28	28	28	28	24	19	14	10	TEU (FEU)	DECK	400
31(2)		32		29(5)		28		28		24(4)		14(5)		(10)	FEU (TEU)		186 (26)

24	24	24	24	24	24	24	24	24	24	24	20	12	TEU (FEU)	HOLD	272
(24)	24		24		24		24		24		20(4)		(12)		FEU (TEU)

CONTAINER CAPACITY	TEU (FEU)	TOTAL	671
	FEU (TEU)		300 (68)

GL APPROVED ON 2007-07-03 WITH REF.-NO. 07-073767

WE RESERVE ALL RIGHTS FOR THIS DRAWING EVEN IN CASE OF PATENTS GRANTED OR REGISTRATION OF UTILITY MODELS. REPRODUCTION AND TRANSMITTEL TO THIRD PARTIES OR OTHER USE ARE NOT ALLOWED WITHOUT OUR CONSENT.					CONTAINER SECURING PLAN DECK - HOLD	HB-0445-BB-001	Index: a
	a	GL - approval	11.07.07	CFR			
	IND.	MODIFICATION	DATE	NAME	DAEHAN SHIPBUILDING H-503-508	06.06.07/CFR	Sheet 1