

M/V 'HC Eva-Marie'

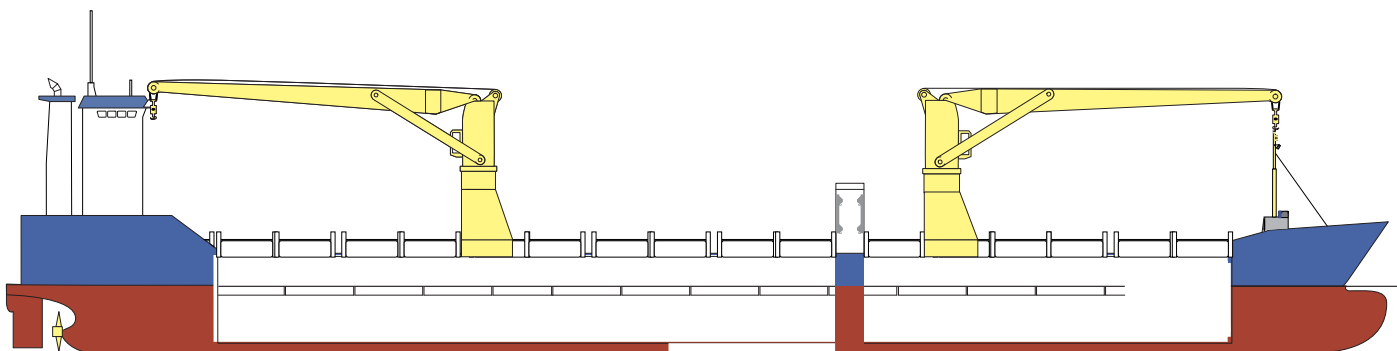
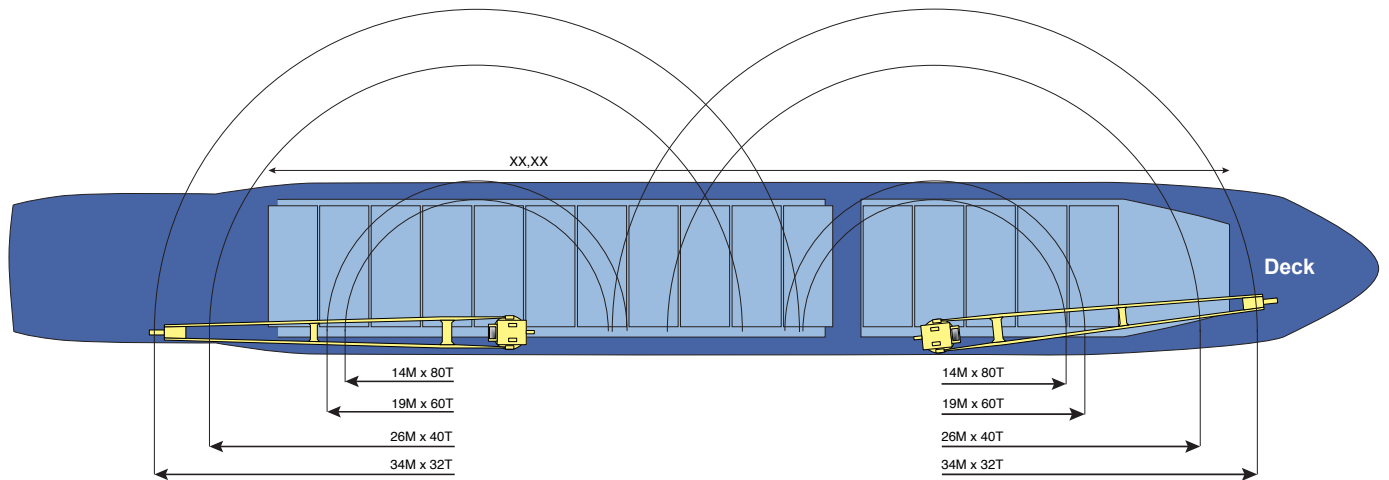
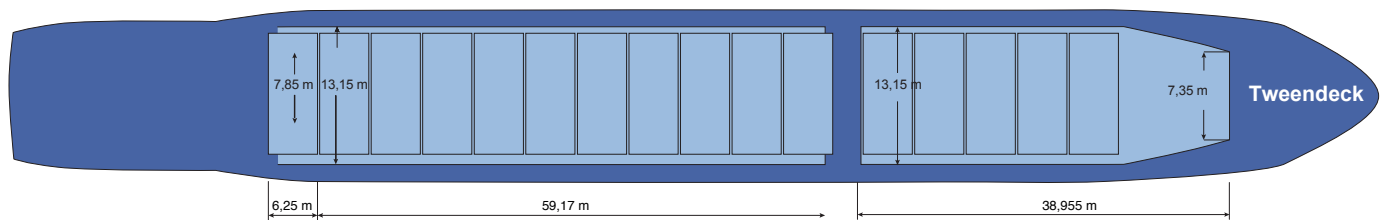
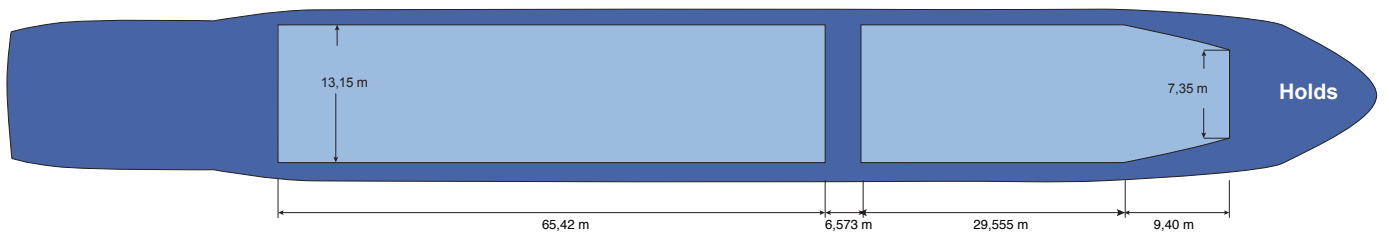
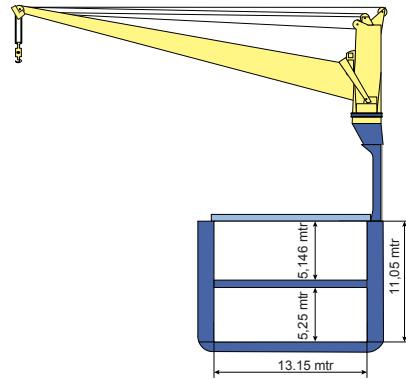
Valid as of 21 Mar 2025

Registration		Deck loads	
Call sign	V2GM7	Tanktop	20,0 mt/m ²
IMO number	9369071	Tween deck pontoons	3,5 mt/m ²
Port of registry	St. John's	Hatch covers	1,75 mt/m ²
Flag state	Antigua & Barbuda		
Shipyard	Damen Shipyard Changde	Hatch covers/Tween deck	
Year/Place of delivery	2007/China	Type of hatch covers	6 + 10 pontoons
Class	Rina	Tween deck pontoons	5 + 12 panels
Class notation	C X gen. cargo ship - double side-skin – equip. for carr. of contr.; unrest. Navigation	Moveable by own	cargo/gantry crane
	✕ AUT-UMS; Ice class IA		
P&I Club	Gard P. & I.	Propulsion/Maneuvering	
		Main Engine	4.320 kW
Tonnage		Bow thruster	650 kW
DWAT	11.121 mt	Shaft generator	720 kW
DWCC	Abt. 10.500 mt		
Gross tonnage	7.878	Propeller	Controllable pitch
Net tonnage	3.909	Rudder	Balanced
		Service speed	13,0 kn
Dimensions		Bunkers/Ballast capacity	
Length over all	145,63 m	Heavy fuel oil	536 m ³
Length between p.p.	138,62 m	Marine gas oil	158 m ³
Breadth over all	18,25 m	Fresh water	74 m ³
Breadth moulded	18,25 m	Ballast water	5.051 m ³
Summer draught	7,41 m		
Depth moulded	10,30 m	Cargo gear	
Height keel to top mast	36,80 m	Cranes on stbd side	2 x Libherr x 80 mt SWL
Hold/hatch sizes		Load/Outreach	80 mt/14 m
Number of holds/hatches	2/2		60 mt/16 m
Hold capacity	About 14.800 m ³ /523.000 ft ³		40 mt/28 m
# 1 Hatch/hold dimensions	38,96 x 13,15 m (narrow fwd to 7,35 m)		32 mt/34 m
# 2 Hatch/hold dimensions	65,42 x 13,15 m (narrow aft to 7,85 m)	Combinable load	160 mt SWL
Hold height	11,05 m	Lifting beam on board	None
Tanktop -> Tween deck	5,25 m	Spreader beams on board	None
Tween deck -> Hatch cover	5,146 m		
Weather deck surface	1371 m ²		
Tween deck surface	1247 m ²		
Tank top surface	1300 m ²		
Container capacity			
Hold capacity	274 TEU		
Deck capacity	358 TEU (60 reefer)		
Total	632 TEU		
Stack weight TEU/FEU	Tanktop: 100/120 mt		
	Tween deck: 25/40 mt		
	Stanchions: 35/54 mt		
	Hatchcovers: 28/52 mt		
TEU slots for IMO class 1	All deck and holds		

All details are believed to be correct but without guarantee/HWS

Phone: +45 7070 1311
E-mail: europe@ocean7projects.com
Web: ocean7projects.com

HC Eva-Marie



HFO TANKS - NO WELDING AREA

HC EVA-MARIE

PROFILE

