



M/V 'INDUSTRIAL MOMENTUM'

Valid as of 18 Sep 2024

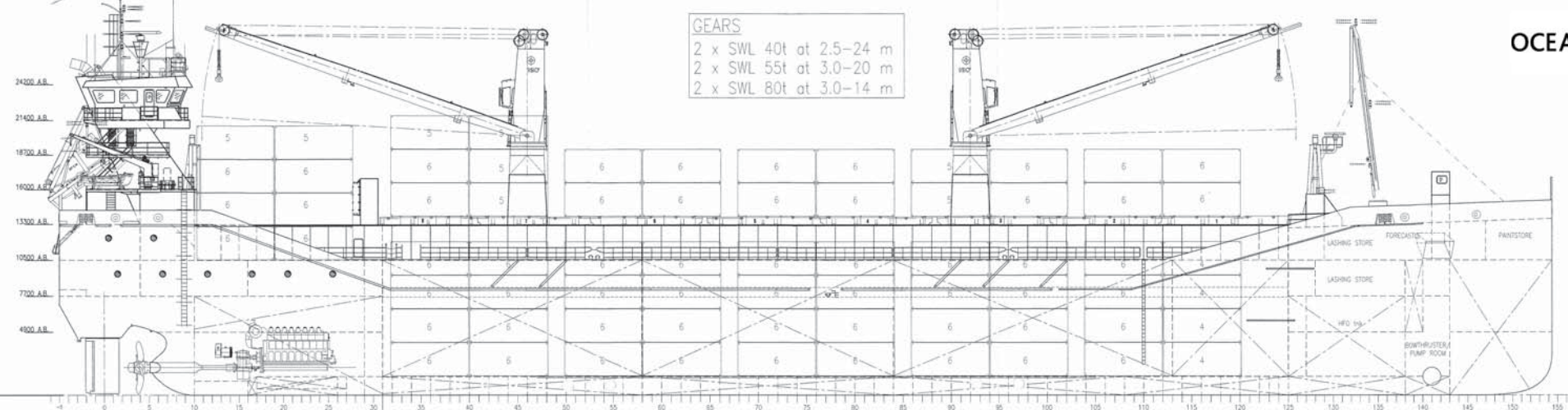
Registration	
Call sign	PCGO
IMO number	9534432
Port of registry	Groningen
Flag state	Dutch
Shipyard	Peters Shipyards
Year/Place of delivery	2010/The Netherlands
Class	Bureau Veritas
Class notation	I ✕HULL ✕MACH General cargo ship -equipped for carriage of containers - -heavycargo, unrest. navigat. ✕ AUT-UMS, MON-SHAFT Cleanship (C), inwatersurvey
P&I Club	MS Amlin Marine N.V.
Tonnage	
DWAT	10.029 mt
DWCC	Abt. 9.200 mt
Gross tonnage	6.693
Net tonnage	3.441
Dimensions	
Length over all	116,26 m
Length between p.p.	112,76 m
Breadth over all	17,80 m
Breadth moulded	17,80 m
Summer draught	7,82 m
Depth moulded	10,50 m
Height ballast w/l to top mast	30,52 m
Hold/hatch sizes	
Number of holds/hatches	1/1
Hold capacity	About 11.568 m ³ /408.500 ft ³
Hold & T/D dimensions	61,47 x 15,20 m (aft) + 9,00 x 12,64 m (fwd)
Hatch cover dimensions	70,48 x 17,20 m
Hold height	11,79 m
Height above/below T/D	4,88 / 6,15 (full length)
Height above/below T/D	7,80 / 3,23 (partial length)
Tank top surface	1.045 m ²
Tween deck surface	1.045 m ²
Deck surface	1.200 m ²
Container capacity	
Hold capacity	172 TEU
Deck capacity	232 TEU (4+4 reefer)
Total	404 TEU
Stack weight TEU/FEU	Tank top: 96/122 mt Hatch covers: 21/42 mt
TEU slots for IMO class 1.1-1.6	On deck only
Class 1.4S	On deck and in hold

Deck loads	
Tanktop	18,0 mt/m ²
Tween deck pontoons	3,5 mt/m ²
Hatch covers	2,6 mt/m ²
Moveable bulkheads	4 (6 positions)
Hatch covers/Tween deck	
Type of hatch covers	8 pontoons
Tween deck pontoons	12 panels
Open top condition	Yes
Propulsion/Maneuvering	
Main Engine	4.000 kW
Bow thruster	450 kW
Stern thruster	no
Propeller	CPP
Rudder	Balanced
Service speed	12,0 kn
Bunkers/Ballast capacity	
Heavy fuel oil	485 m ³
Marine gas oil	151 m ³
Fresh water	96 m ³
Ballast water	3.984 m ³
Cargo gear	
Cranes on port side	2 x electro-hyd. x 80 mt SWL
Load/Outreach	80 mt/3,0 – 14,0 m 55 mt/3,0 – 20,0 m 40 mt/2,5 – 24,0 m
Tandem load	180 mt SWL
Lifting beam on board	1 x 15.7m x 160 mt WLL (eyes for lifts between 2.2 and 15.4 m)
Lifting heights	
At 3,0 m outreach	31,2 m
At 14,0 m outreach	18,0 m
At 20,0 m outreach	18,4 m
At 24,0 m outreach	11,2 m

*All details are believed to be correct but
without guarantee/NN*

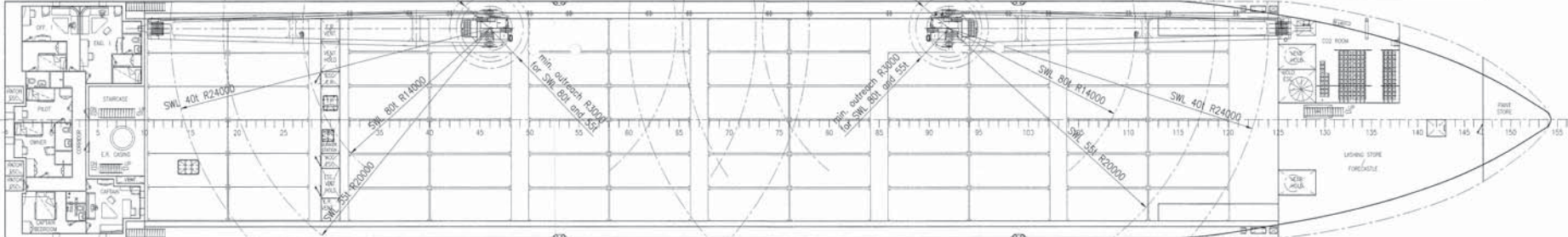
Phone: +45 70 70 13 11
E-mail: europa@ocean7projects.com
Web: <https://ocean7projects.com>

GEARS
2 x SWL 40t at 2.5-24 m
2 x SWL 55t at 3.0-20 m
2 x SWL 80t at 3.0-14 m



MAINDECK 10500 a.b.

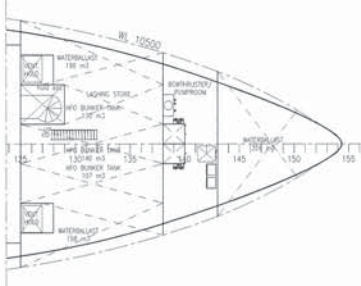
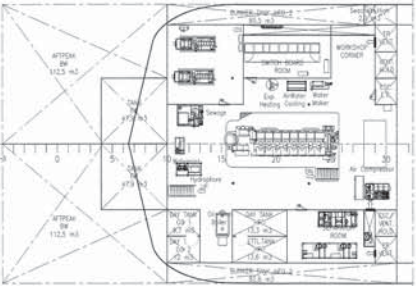
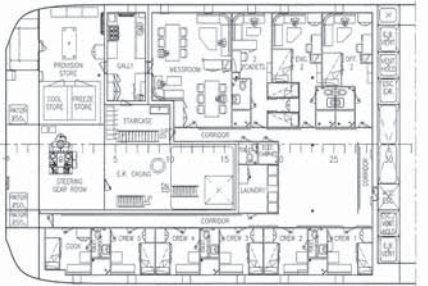
LASHINGDECK 10500 a.b.



ACCOMMODATION DECK 7700 a.b.

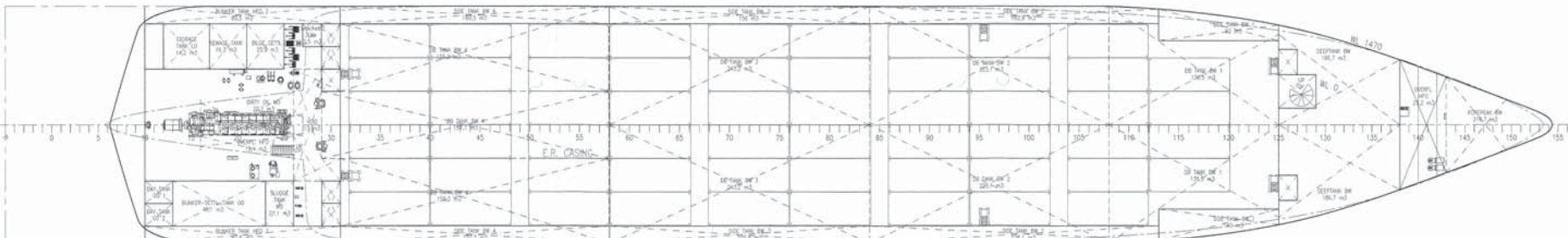
ENGINE ROOM TWEEN DECK 4900 a.b.

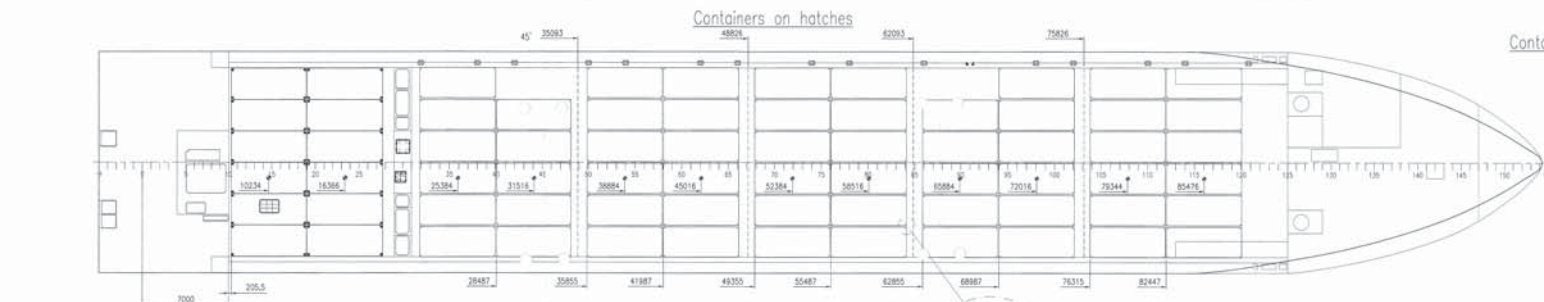
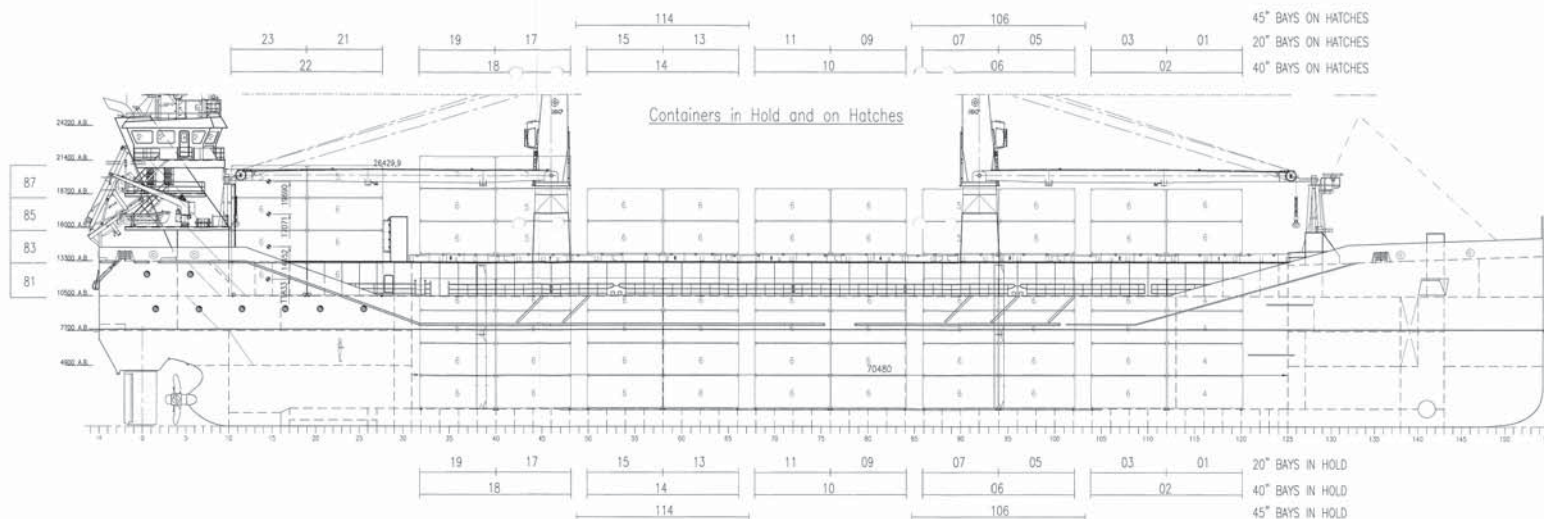
LASHING DECK 7700 a.b.



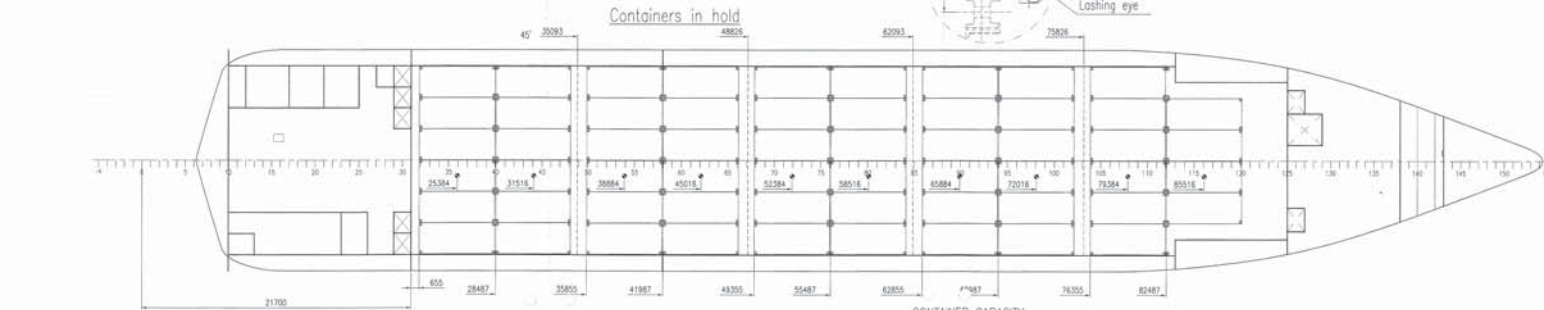
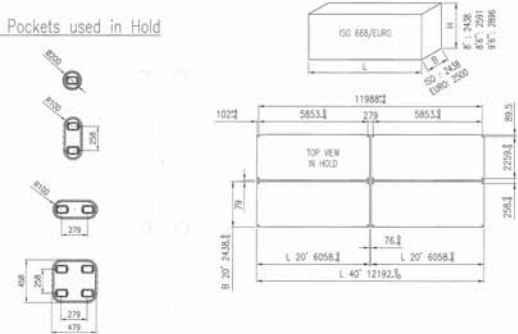
ENGINE ROOM 1450 a.b.

TANK TOP 1450 a.b.





Container Pockets used in Hold



Class: Lloyd's Register
 = 100 AT LMC UMS SCM
 Strengthened for Heavy Cargoes
 Container cargoes in holds and on hatchcovers
 With the descriptive code ECDA (sign)
 SOLAS-II regulation 19
 Flag: Dutch Shipping Inspectorate, unrestricted waters.

SOLE 10000

MAIN PARTICULARS

Length o/s	ca. 116,360 m
Length (BRKD)	ca. 112,760 m
Length w/l	ca. 112,760 m
Hull length	ca. 112,760 m
Breadth max	ca. 17,80 m
Depth	ca. 10,50 m
Summer draught	ca. 7,80 m
Hold capacity	ca. 12,420 m ³ ca. 438,600 cu ft
Deck loading	ca. 18 t/m ²
Containers in hold	232 TEU (112 FEU + 8 TEU)
Containers on hatch	128 TEU (63 FEU + 4 TEU)
Containers on aft deck	48 TEU (23 FEU)
Tank capacities	
ballast	ca. 3984 m ³
fresh water	ca. 95,9 m ³
fuel (IFO)	ca. 589 m ³
Sea Oil	ca. 88,4 m ³
CEI	ca. 6613 GJ
Engine power installed	ca. 3441 kW
	ca. 6000 kW

CONTAINER CAPACITY

Configurations only with 8'x8'	A-only 20'		B-comb. 40'+20'		C-comb. 45'+40'+20'	
	20'	40'	20'	45'	40'	20'
TIER 02	58	28	2	12	16	2
TIER 04	58	28	2	12	16	2
TIER 06	58	28	2	12	16	2
TIER 08	58	28	2	12	16	2
TOTAL IN HOLD	232	112	8	48	64	8
TIER 82	58	28	2	11	17	2
TIER 84	58	28	2	11	17	2
TIER 86	10	5	0	0	0	0
TOTAL ON HATCHES	126	61	4	22	34	4
TIER 81	12	6	0	0	6	0
TIER 83	12	6	0	0	6	0
TIER 85	12	6	0	0	6	0
TIER 87	10	5	0	0	5	0
TOTAL ON AFT	46	23	0	0	23	0
TOTAL OF SHIP	404	196	12	70	121	12

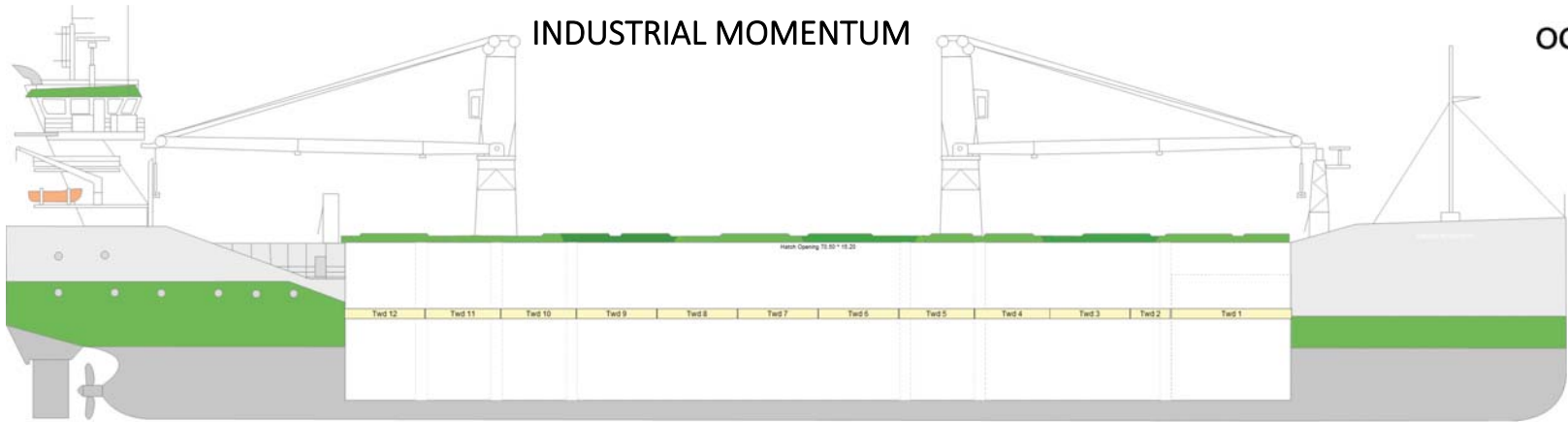
Tanktop load 18 ton/m²
 Container stock load:
 TEU: 96 ton
 FEU: 122 ton

On hatches container line load for stock:
 TEU: 21 ton
 FEU: 42 ton
 See also container lashing manual.

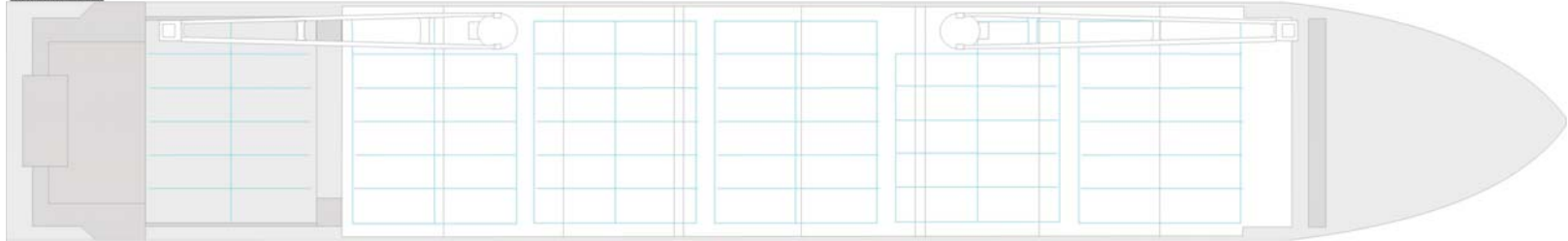
1) Drawn/checked	2) Date	3) Scale
4) Issued for construction	5) Issued for	6) Issued for
7) Issued for	8) Issued for	9) Issued for
10) Issued for	11) Issued for	12) Issued for
13) Issued for	14) Issued for	15) Issued for
16) Issued for	17) Issued for	18) Issued for
19) Issued for	20) Issued for	21) Issued for
22) Issued for	23) Issued for	24) Issued for
25) Issued for	26) Issued for	27) Issued for
28) Issued for	29) Issued for	30) Issued for

Title: Container Plan	
Project: SOLE 10000	Hub: 900
Checked: Status: RD Rev: F	TAG: 11-0601

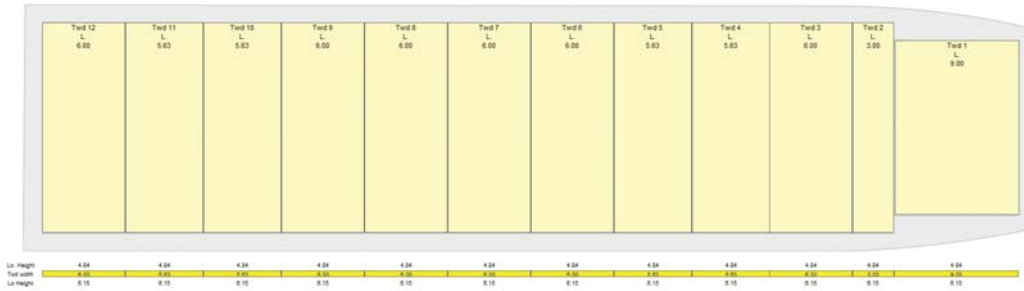
INDUSTRIAL MOMENTUM



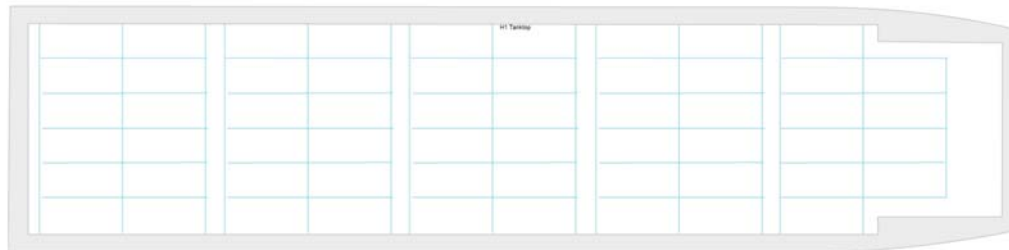
Top view Main Deck

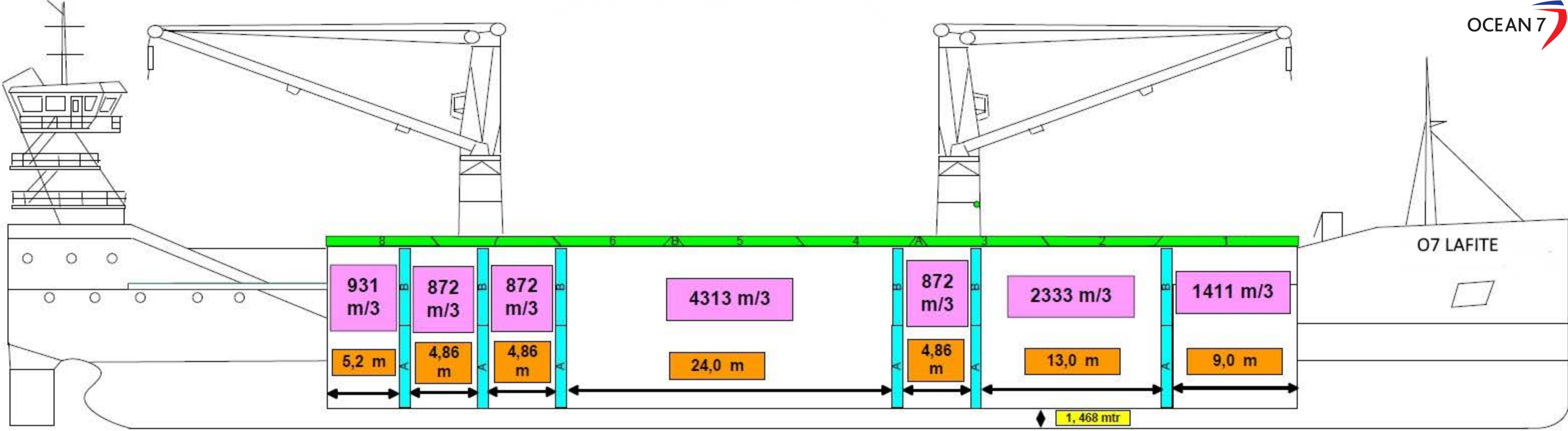


Top view Tweendeck



Top view Tank Top





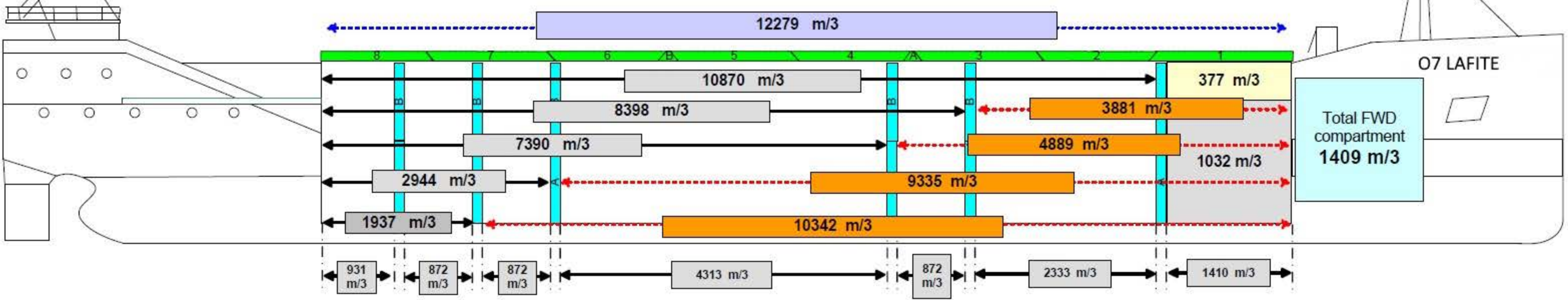
Bulkhead particulars

		Dimensions	Weight	Volume
A	6 pcs	5,97 x 15,14 x 0,76	24,61 tonn	68,96 m³
B	4 pcs	5,595 x 15,14 x 0,76	23,51 tonn	64,63 m³
C	1 pc	2,97 x 15,14 x 0,76	13,21 tonn	34,31 m³
D	1 pc	8,97 x 15,14 x 0,76	28,84 tonn	86,17 m³

Possibility combination of bulkheads

Clearance between hatchcover and bulkhead

- 1 — 0,225 mtr
- 2 — 0,225 mtr
- 3 — 0,600 mtr



Total VOLUME without any bulkhead = 12415,57 m³

