

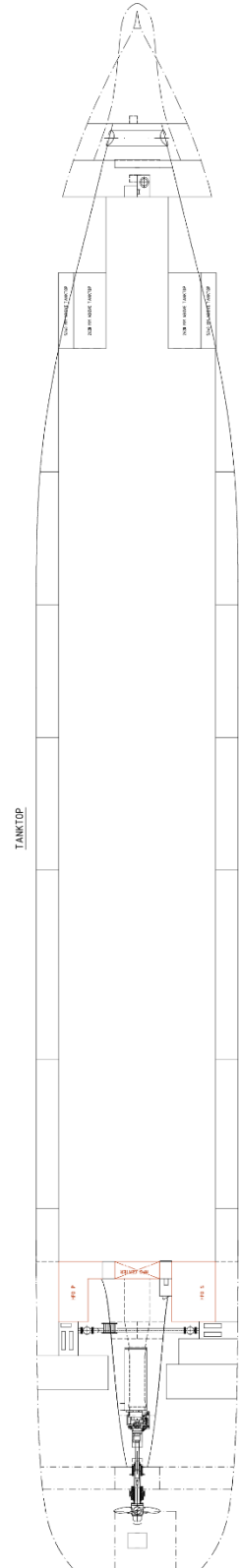
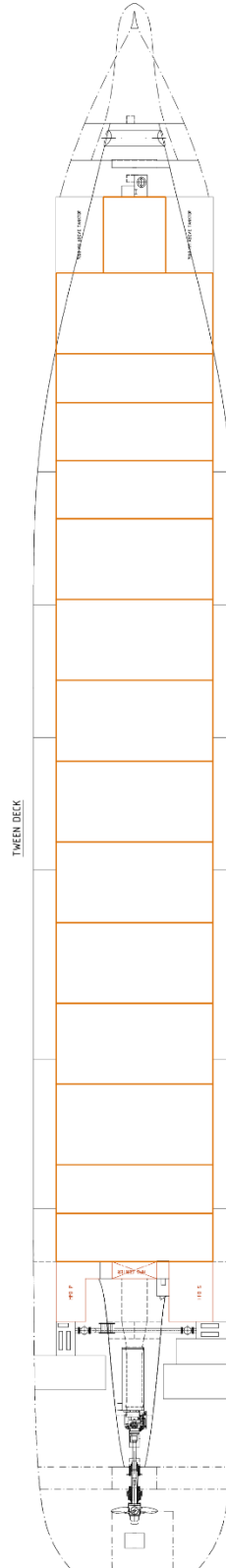
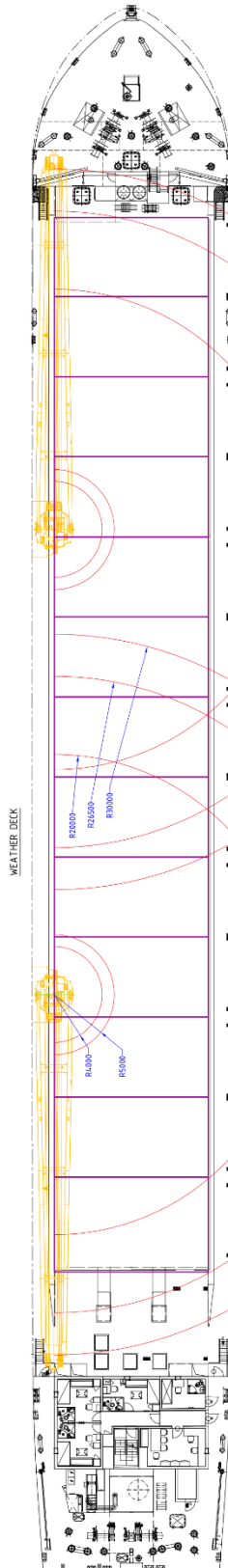
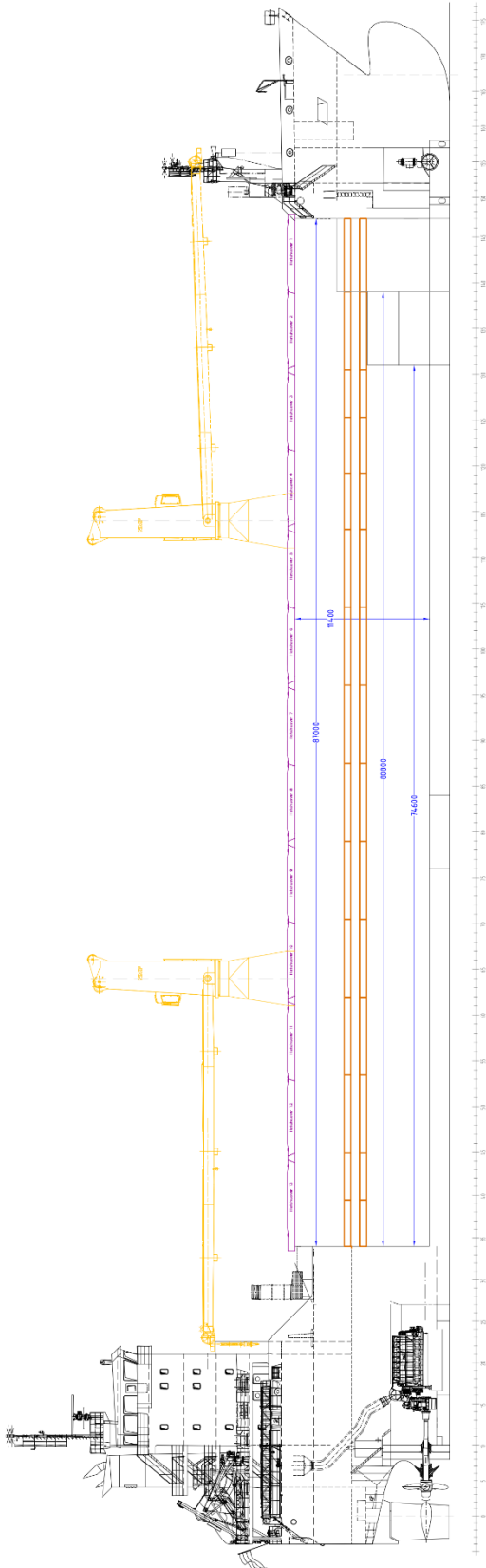
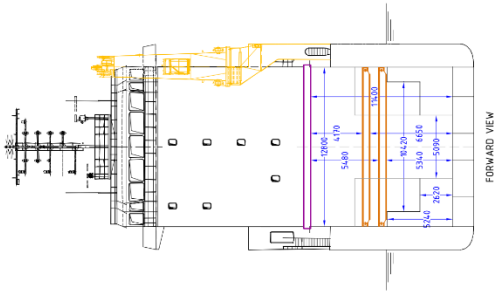




**M/V 'KLAUS'**

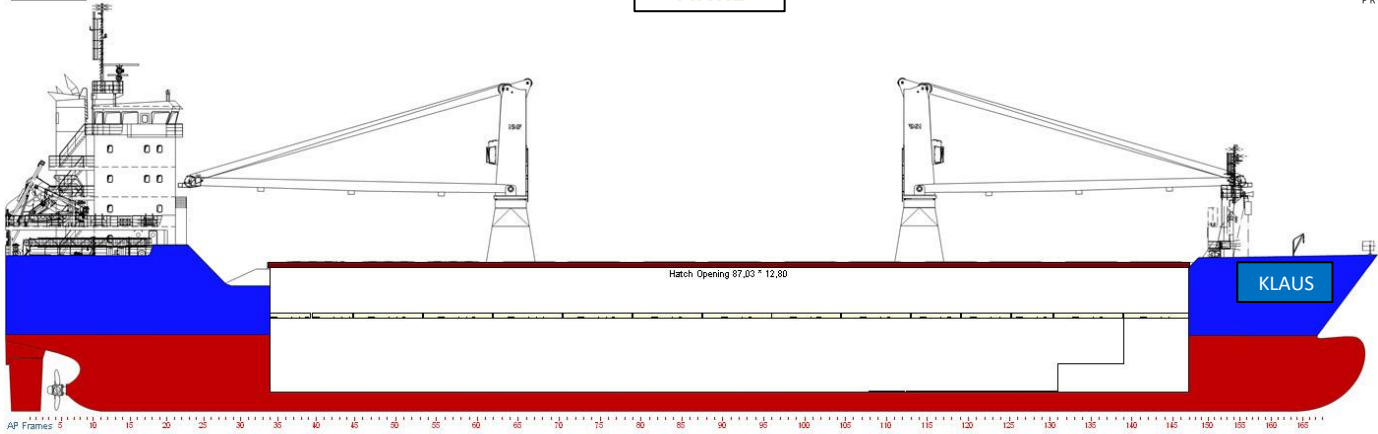
Valid as of 22 Feb 2021

<b>Registration</b>	<p>Call sign D5OY9            IMO number 9570632            Port of registry Monrovia            Flag state Republic of Liberia            Shipyard Dongfang Shipbuilding Group            Year/Place of delivery 2011/China            Class BV            Class notation  100 A5 E3 Multi-Purpose Dry Cargo Ship. Equipped for carriage of containers            Strength. for Heavy Cargo   MC E3 AUT</p> <p>Ice class 1A            P&amp;I Club Skuld</p>	<b>Deck loads</b>	<p>Tanktop 15,0 mt/m<sup>2</sup>            Tween deck pontoons 3,0 mt/m<sup>2</sup>            Hatch covers 1,75 mt/m<sup>2</sup></p>
<b>Tonnage</b>	<p>DWAT 7.950 mt (summer draught)            DWCC Abt. 7.000 mt            Gross tonnage 7.138            Net tonnage 2.266</p>	<b>Hatch covers/Tween deck</b>	<p>Type of hatch covers 13 pontoons (move by crane)            Tween deck 15 removable panels            Open top condition No</p> <p>Removable bulkheads Made of two tween deck panels in designated spaces</p>
<b>Dimensions</b>	<p>Length over all 130,25 m            Length between p.p. 122,00 m            Breadth over all 16,50 m            Breadth moulded 16,50 m            Summer draught 7,00 m            Depth moulded 11,50 m            Height keel to top mast 37,50 m</p>	<b>Propulsion/Maneuvering</b>	<p>Main Engine 2.990 kW            Bow thruster 409 kW            Shaft generator 600 kW            Propeller Controllable pitch propeller            Rudder Balanced            Service speed 10,5 kn</p>
<b>Hold/hatch sizes</b>	<p>Number of holds/hatches 1/15            Hold capacity (w/o tweendecks) About 12.226 m<sup>3</sup>/431.757 ft<sup>3</sup>            Lower hold dimensions 87,00 x 12,80 (5,00 fwd) m            Tween deck dimensions 87,00 x 12,80 (5,00 fwd) m            Hatch coaming 87,00 x 12,80 m            Hatch cover dimensions 87,42 x 13,15 m</p> <p>Hold height 11,40 m            Clearance under/above twd. Lower pos.: 5,34 m/5,48 m            Upper pos.: 6,65 m/4,17 m</p>	<b>Bunkers/Ballast capacity</b>	<p>Heavy fuel oil 465 m<sup>3</sup>            Marine gas oil 62 m<sup>3</sup>            Lubricating oil 29 m<sup>3</sup>            Fresh water 59 m<sup>3</sup>            Ballast water 5.038 m<sup>3</sup></p>
	<p>Tank top deck surface            Tween deck surface Abt. 1065 m<sup>2</sup>            Weather deck surface Abt. 1180 m<sup>2</sup></p>	<b>Cargo gear</b>	<p>Cranes on port side 2 x NMF x 80 mt SWL            Load/Outreach 80 mt/5,0-20,0 m            60 mt/4,0-26,5 m            45 mt/4,0-30,0 m</p> <p>Tandem load 160 mt SWL            Lifting beam on board 1 x 14,7 m x WLL 2x80 mt            Spreader beams on board 1 x 20,0 m x WLL 36 mt</p>
<b>Container capacity</b>	<p>Hold capacity 244 TEU            Deck capacity 200 TEU (30 reefer)            Total 444 TEU            Stack weight TEU/FEU Tanktop: 90/120 mt            Hatchcovers:30/50 mt</p>	<b>Lifting heights</b>	<p>At 4,0 m outreach Abt. 33,1 m            At 20,0 m outreach Abt. 25.8 m            At 26,5 m outreach Abt. 18,1 m            At 30,0 m outreach Abt. 9,9 m</p>
TEU slots for IMO class 1	<p>169 on deck            244 in hold, class 1.4S only</p>	<p><i>All details are believed to be correct but without guarantee/HWS</i></p> <p>OCEAN7 Projects ApS            Jyllandsgade 19A            DK-7000 Fredericia            Denmark</p> <p>Phone: +45 7070 1311            E-mail: denmark@ocean7projects.com</p>	

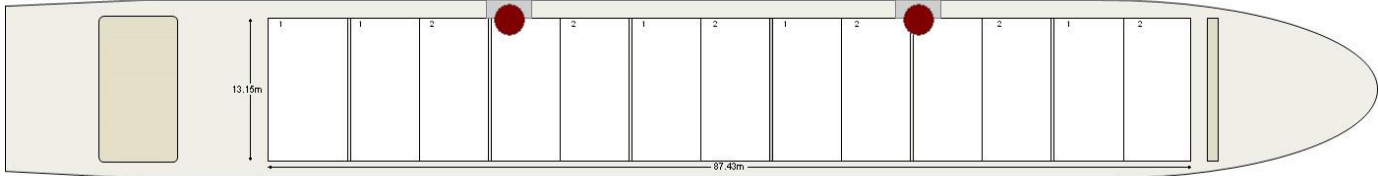


# KLAUS

Side view

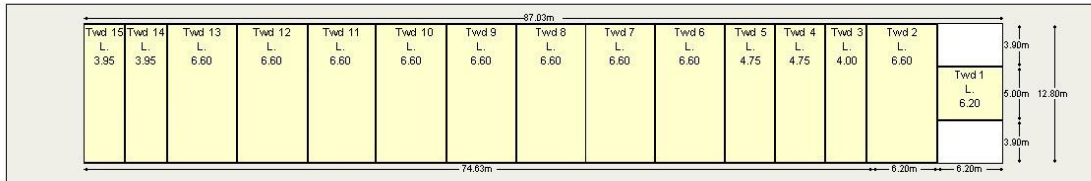


Top view Main Deck



AP in meter 5 10 15 20 25 30 35 40 45 50 55 60 65 70 75 80 85 90 95 100 105 110 115 120 125 130 135 140 145 150 155 160 165

Top view Tweendeck



Top view Tank Top

Max Load  
 Tanktop 15.0mt/m<sup>2</sup>  
 Twd 3.0mt/m<sup>2</sup>  
  
 Deck Load  
 20t 40t  
 Tanktop 40mt 120mt  
 Hatch cover 30mt 40mt  
  
 Crane range  
 30m - 40mt 25.5m - 60mt 20m - 80mt  
  
 Hatch cover to be open in sequence 1 then 2

