



M/V 'KLAUS'

Valid as of 03 Jan 2022

Registration	D50Y9	Deck loads	
Call sign	D50Y9	Tanktop	15,0 mt/m ²
IMO number	9570632	Tween deck pontoons	3,0 mt/m ²
Port of registry	Monrovia	Hatch covers	1,75 mt/m ²
Flag state	Madeira/Portugal	Hatch covers/Tween deck	
Shipyard	Dongfang Shipbuilding Group	Type of hatch covers	13 pontoons (move by crane)
Year/Place of delivery	2011/China	Tween deck	15 removable panels
Class	BV	Open top condition	No
Class notation	⚡ 100 A5 E3 Multi-Purpose Dry Cargo Ship. Equipped for carriage of containers Strength. for Heavy Cargo	Removable bulkheads	Made of two tween deck panels in designated spaces
	⚡ MC E3 AUT	Propulsion/Maneuvering	
Ice class	1A	Main Engine	2.990 kW
P&I Club	Skuld	Bow thruster	409 kW
		Shaft generator	600 kW
Tonnage		Propeller	Controllable pitch propeller
DWAT	7.950 mt (summer draught)	Rudder	Balanced
DWCC	Abt. 7.000 mt	Service speed	10,5 kn
Gross tonnage	7.138	Bunkers/Ballast capacity	
Net tonnage	2.266	Heavy fuel oil	465 m ³
		Marine gas oil	62 m ³
Dimensions		Lubricating oil	29 m ³
Length over all	130,25 m	Fresh water	59 m ³
Length between p.p.	122,00 m	Ballast water	5.038 m ³
Breadth over all	16,50 m	Cargo gear	
Breadth moulded	16,50 m	Cranes on port side	2 x NMF x 80 mt SWL
Summer draught	7,00 m	Load/Outreach	80 mt/5,0-20,0 m
Depth moulded	11,50 m		60 mt/4,0-26,5 m
Height keel to top mast	37,50 m		45 mt/4,0-30,0 m
		Tandem load	160 mt SWL
Hold/hatch sizes		Lifting beam on board	1 x 14,7 m x WLL 2x80 mt
Number of holds/hatches	1/1	Spreader beams on board	1 x 20,0 m x WLL 36 mt
Hold capacity (w/o tweendecks)	About 12.226 m ³ /431.757 ft ³	Lifting heights	
Lower hold dimensions	87,00 x 12,80 (5,00 fwd) m	At 4,0 m outreach	Abt. 33,1 m
Tween deck dimensions	87,00 x 12,80 (5,00 fwd) m	At 20,0 m outreach	Abt. 25.8 m
Hatch coaming	87,00 x 12,80 m	At 26,5 m outreach	Abt. 18,1 m
Hatch cover dimensions	87,42 x 13,15 m	At 30,0 m outreach	Abt. 9,9 m
Hold height	11,40 m		
Clearance under/above twd.	Lower pos.: 5,34 m/5,48 m Upper pos.: 6,65 m/4,17 m		
Tank top deck surface			
Tween deck surface	Abt. 1065 m ²		
Weather deck surface	Abt. 1180 m ²		
Container capacity			
Hold capacity	244 TEU		
Deck capacity	200 TEU (30 reefer)		
Total	444 TEU		
Stack weight TEU/FEU	Tanktop: 90/120 mt Hatchcovers:30/50 mt		
TEU slots for IMO class 1	169 on deck 244 in hold, class 1.4S only		

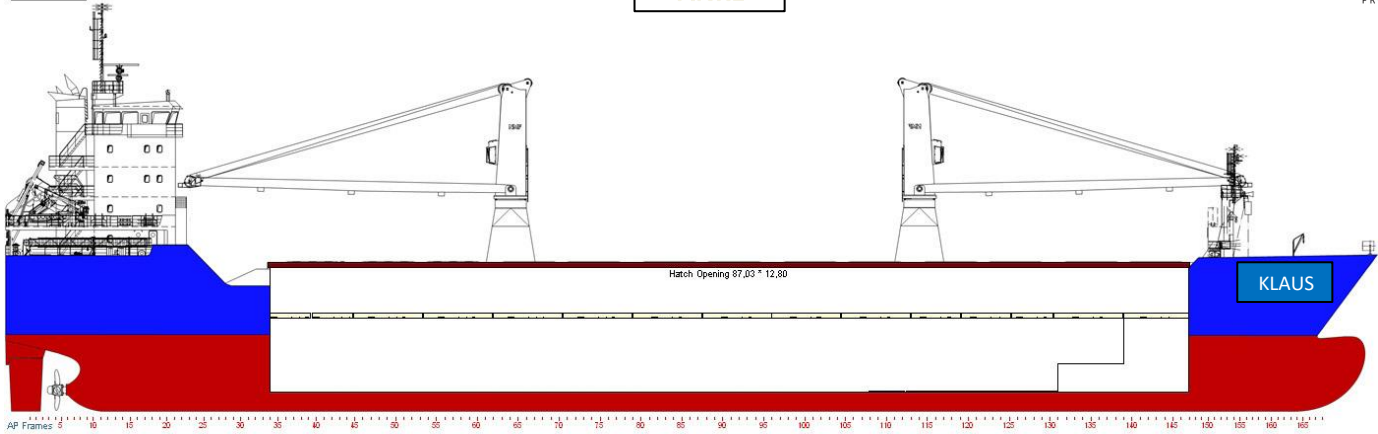
All details are believed to be correct but without guarantee/HWS

OCEAN7 Projects ApS
Jyllandsgade 19A
DK-7000 Fredericia
Denmark

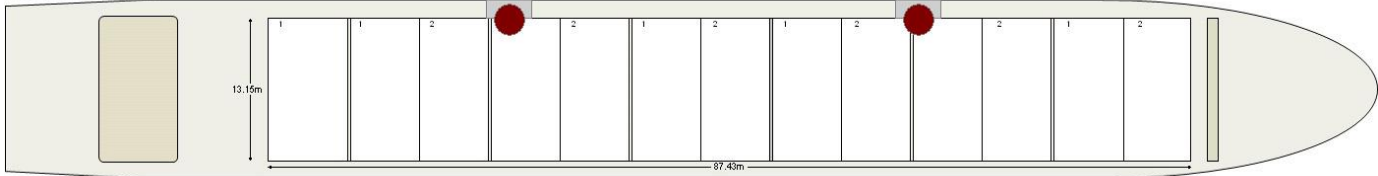
Phone: +45 7070 1311
E-mail: europe@ocean7projects.com

KLAUS

Side view

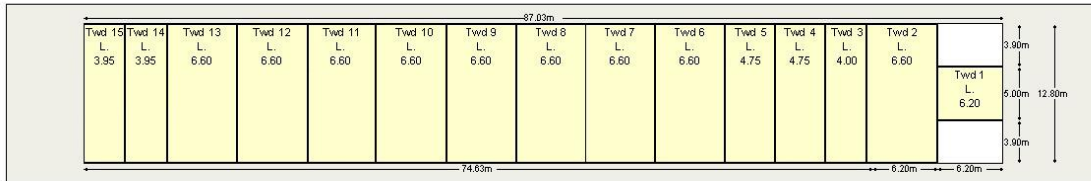


Top view Main Deck



AP in meter 5 10 15 20 25 30 35 40 45 50 55 60 65 70 75 80 85 90 95 100 105 110 in inch AP

Top view Tweendeck



Top view Tank Top

Max Load
 Tanktop 15.0mt/m²
 Twd 3.0mt/m²

 Deck Load
 20t 40t
 Tanktop 40mt 120mt
 Hatch cover 30mt 40mt

 Crane range
 30m - 40mt 25.5m - 60mt 20m - 80mt

 Hatch cover to be open in sequence 1 then 2

