



**M/V 'KLAUS'**

Valid as of 16 Dec 2020

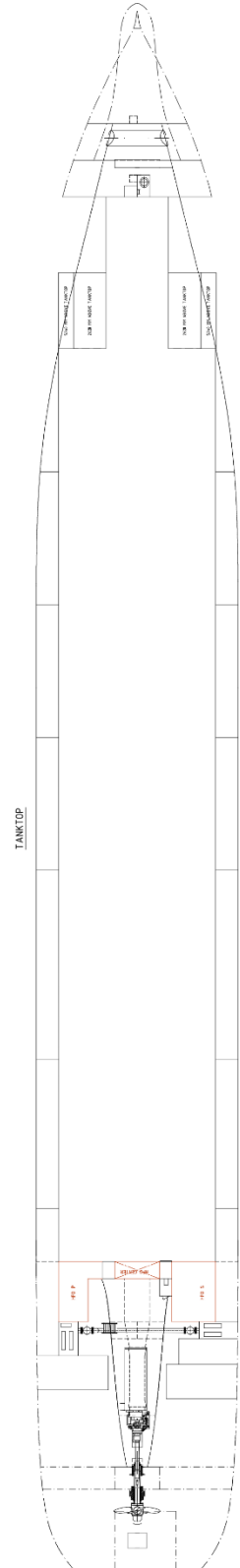
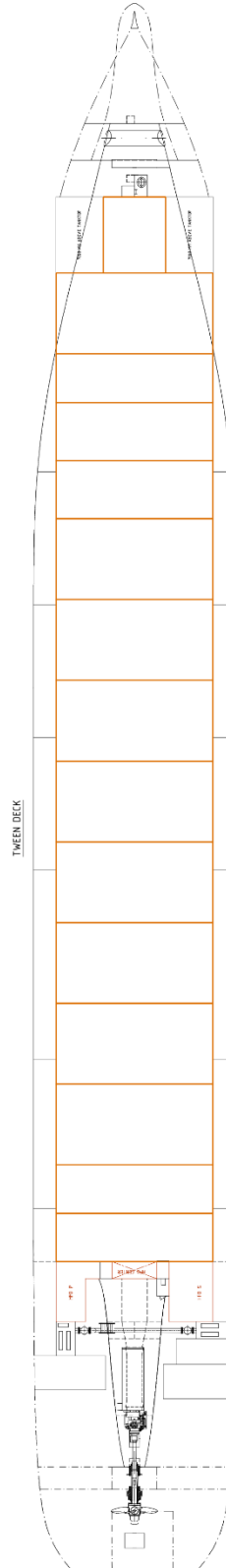
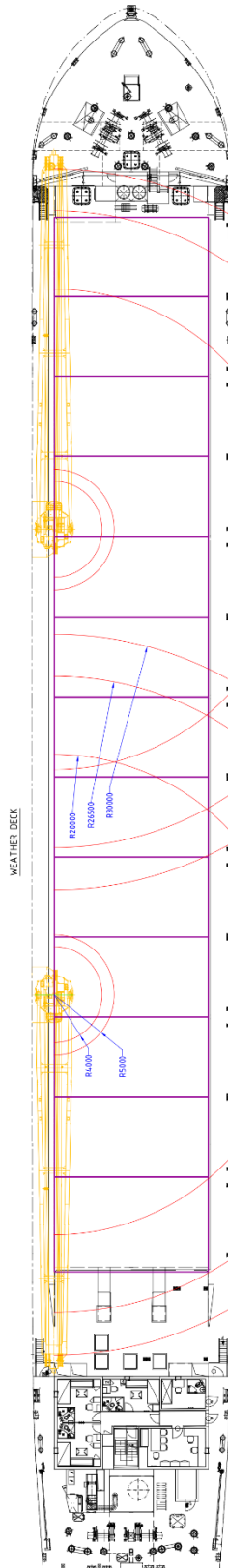
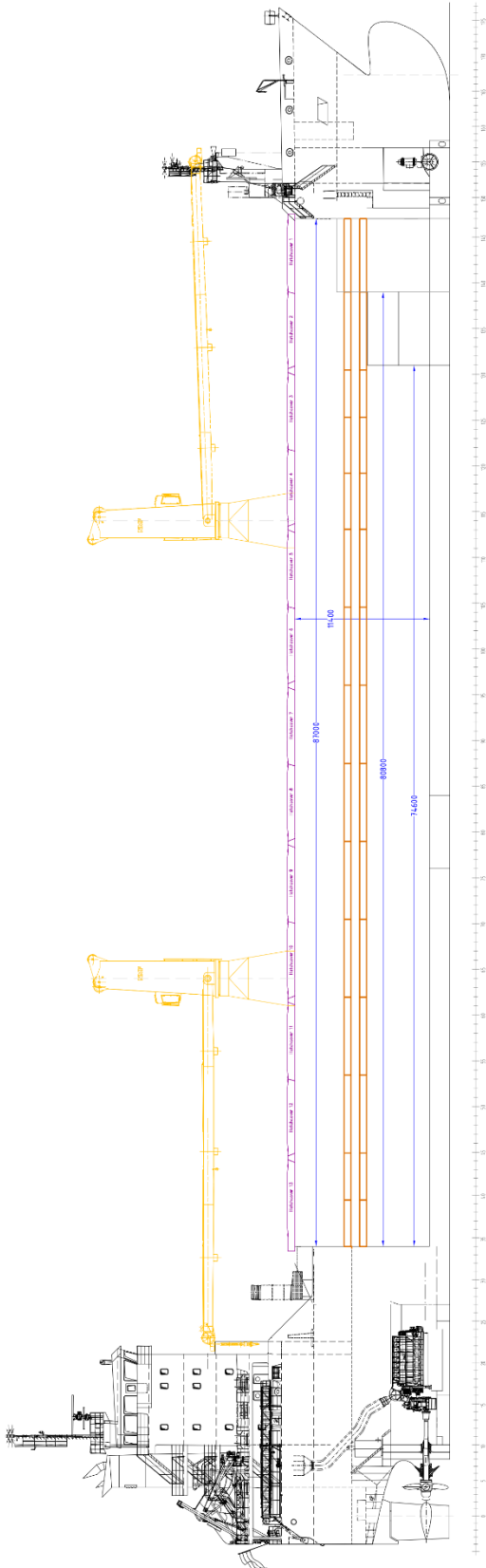
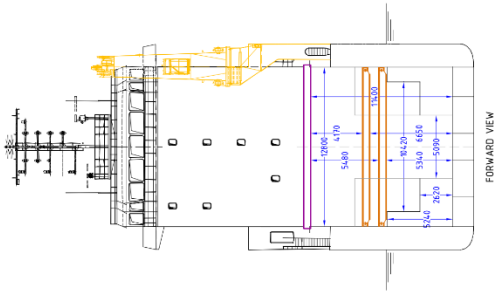
<b>Registration</b>	
Call sign	D5OY9
IMO number	9570632
Port of registry	Monrovia
Flag state	Republic of Liberia
Shipyard	Dongfang Shipbuilding Group
Year/Place of delivery	2011/China
Class	BV
Class notation	⚡ 100 A5 E3 Multi-Purpose Dry Cargo Ship. Equipped for carriage of containers Strength. for Heavy Cargo
	⚡ MC E3 AUT
P&I Club	Skuld
<b>Tonnage</b>	
DWAT	7.950 mt (summer draught)
DWCC	Abt. 7.000 mt
Gross tonnage	7138
Net tonnage	2266
<b>Dimensions</b>	
Length over all	130,25 m
Length between p.p.	122,00 m
Breadth over all	16,50 m
Breadth moulded	16,50 m
Summer draught	7,00 m
Depth moulded	11,50 m
Height keel to top mast	37,05 m
<b>Hold/hatch sizes</b>	
Number of holds/hatches	1/15
Hold capacity (w/o tweendecks)	About 12.226 m <sup>3</sup> /431.757 ft <sup>3</sup>
Lower hold dimensions	87,00 x 12,80 (5,00 fwd) m
Tween deck dimensions	87,00 x 12,80 (5,00 fwd) m
Hatch coaming	87,00 x 12,80 m
Hatch cover dimensions	87,42 x 13,15 m
Hold height	11,40 m
Clearance under/above twd.	Lower pos.: 5,34 m/5,48 m Upper pos.: 6,65 m/4,17 m
Tank top deck surface	
Tween deck surface	Abt. 1065 m <sup>2</sup>
Weather deck surface	Abt. 1180 m <sup>2</sup>
<b>Container capacity</b>	
Hold capacity	244 TEU
Deck capacity	200 TEU (30 reefer)
Total	444 TEU
Stack weight TEU/FEU	Tanktop: 90/120 mt Hatchcovers:30/50 mt
TEU slots for IMO class 1	169 on deck 244 in hold, class 1.4 only

<b>Deck loads</b>	
Tanktop	15,0 mt/m <sup>2</sup>
Tween deck pontoons	3,0 mt/m <sup>2</sup>
Hatch covers	1,75 mt/m <sup>2</sup>
<b>Hatch covers/Tween deck</b>	
Type of hatch covers	13 pontoons (move by crane)
Tween deck	15 removable panels
Open top condition	No
Removable bulkheads	Made of two tween deck panels in designated spaces
<b>Propulsion/Maneuvering</b>	
Main Engine	2.990 kW
Bow thruster	409 kW
Shaft generator	600 kW
Propeller	Controllable pitch propeller
Rudder	Balanced
Service speed	10,5 kn
<b>Bunkers/Ballast capacity</b>	
Heavy fuel oil	465 m <sup>3</sup>
Marine gas oil	62 m <sup>3</sup>
Lubricating oil	29 m <sup>3</sup>
Fresh water	59 m <sup>3</sup>
Ballast water	5.038 m <sup>3</sup>
<b>Cargo gear</b>	
Cranes on port side	2 x NMF x 80 mt SWL
Load/Outreach	80 mt/4,0-20,0 m 60 mt/4,0-26,5 m 45 mt/4,0-30,0 m
Tandem load	160 mt SWL
Lifting beam on board	1 x 14,7 m x WLL 2x80 mt
Spreader beams on board	1 x 20,0 m x WLL 36 mt
<b>Lifting heights</b>	
At 4,0 m outreach	Abt. 33,1 m
At 20,0 m outreach	Abt. 25.8 m
At 26,5 m outreach	Abt. 18,1 m
At 30,0 m outreach	Abt. 9,9 m

*All details are believed to be correct but without guarantee/HWS*

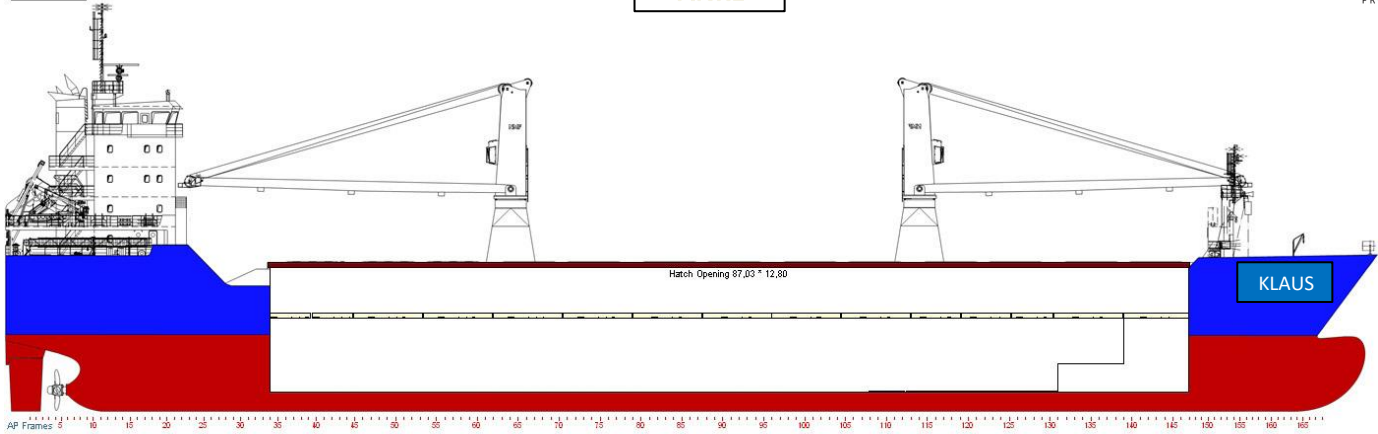
OCEAN7 Projects ApS  
Jyllandsgade 19A  
DK-7000 Fredericia  
Denmark

Phone: +45 7070 1311  
E-mail: denmark@ocean7projects.com

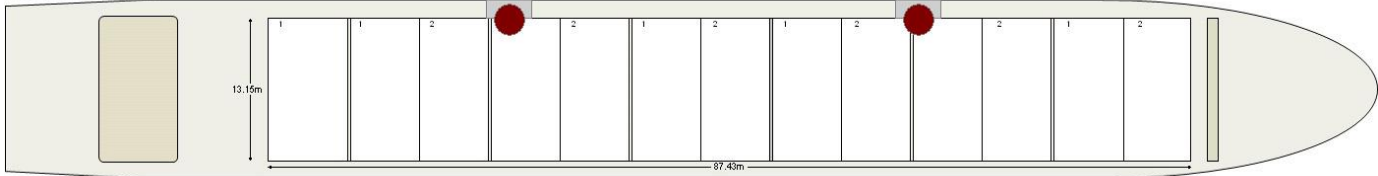


# KLAUS

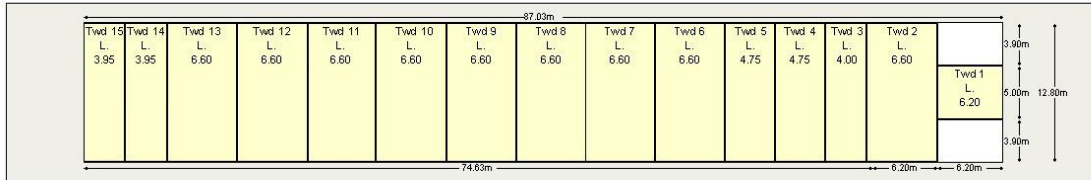
Side view



Top view Main Deck



Top view Tweendeck



Top view Tank Top

- Max Load 15.0mt/c
- Tanktop 3.0mt/c
- Twd
- Stbd Load 20t / 40t
- Tanktop 40mt / 20mt
- Hatch cover 30mt / 40mt
- Crane range 30m - 40mt 25.5m - 40mt 20m - 80mt
- Hatch cover to be open in sequence 1 then 2

