



**M/V 'MORGENSTOND II'**

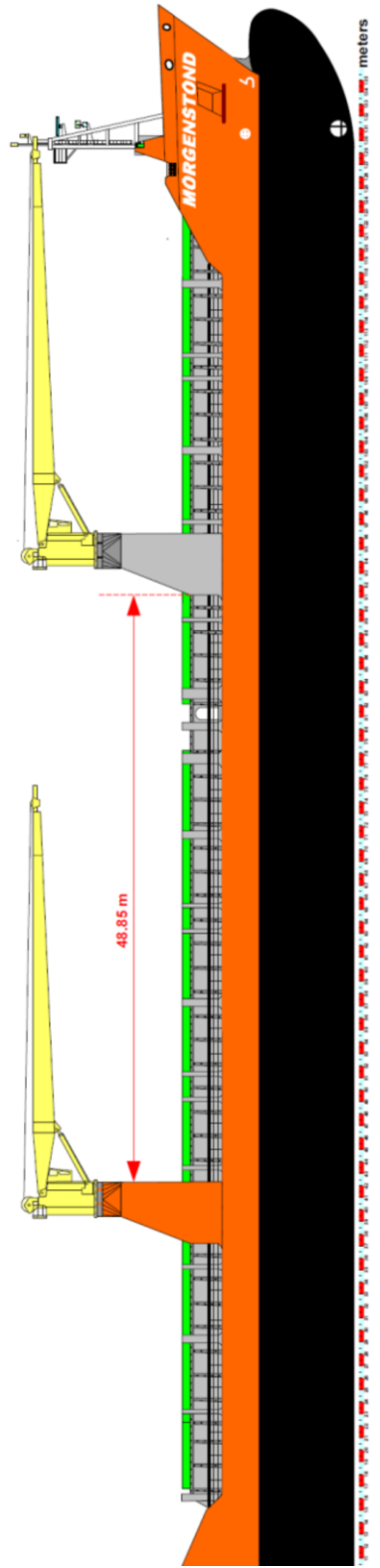
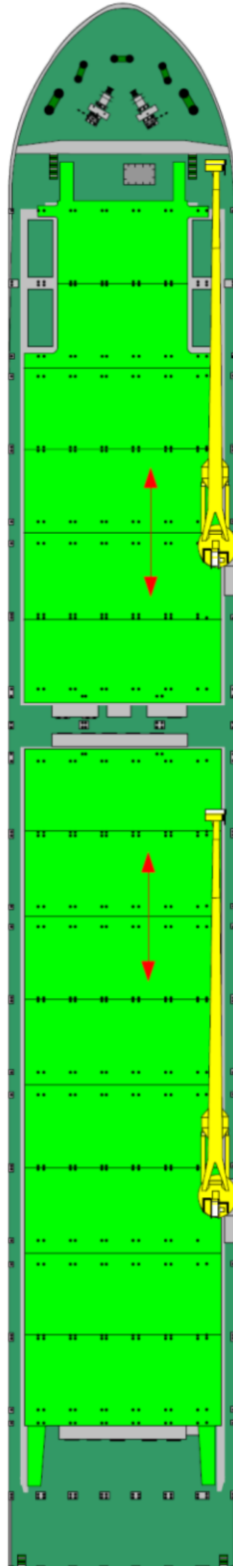
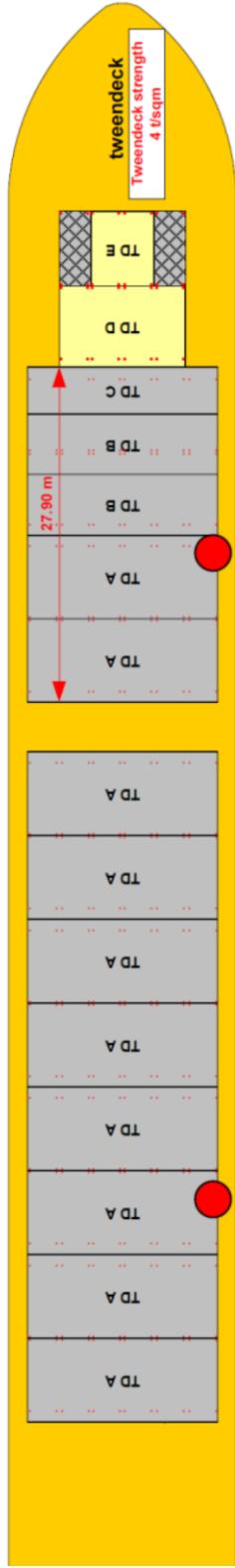
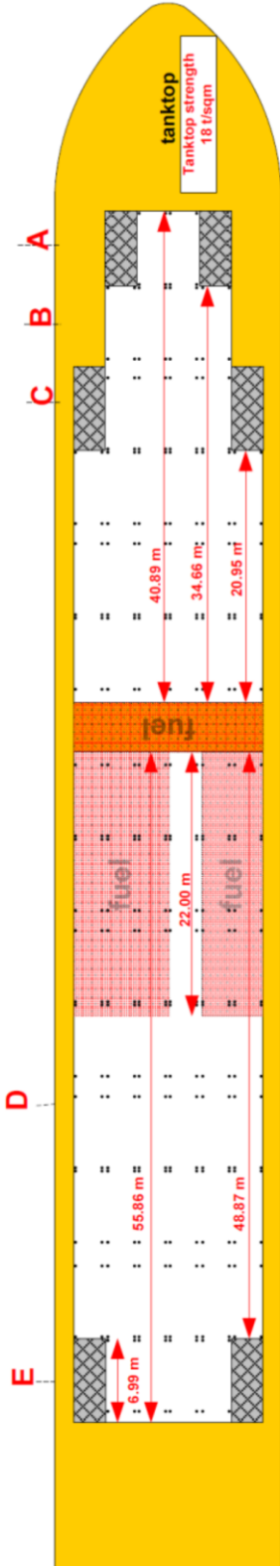
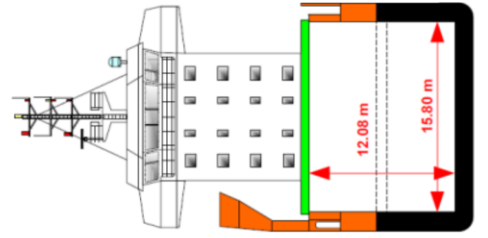
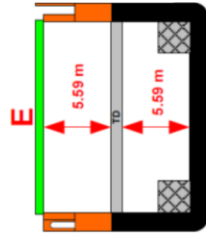
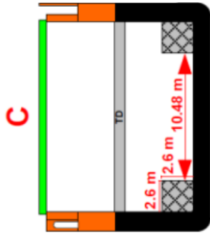
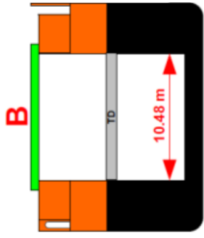
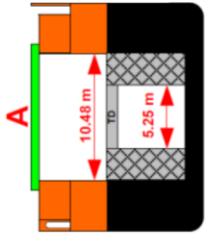
Valid as of 09 Apr 2022

<b>Registration</b>		<b>Deck loads</b>	
Call sign	PHJP	Tanktop	18,00 mt/m <sup>2</sup>
IMO number	9367073	Tween deck pontoons	4,00 mt/m <sup>2</sup>
Port of registry	Delfzijl	Hatch covers	1,75 mt/m <sup>2</sup>
Flag state	Netherland		
Shipyard	Damen Shipyards		
Year/Place of delivery	2007/Ukraine		
Class	Lloyd's Register		
Class notation	✕100A1 Strength. For heavy Cargo. Cont. in holds and Hatch covers. LI Ice Class 1A FS at max draught 8.117 m ✕LMC, UMS, part HT steel.	<b>Hatch covers/Tween deck</b>	
		Type of hatch covers	Hydraulic folding
		Tween deck pontoons	7 removable panels hold #1 8 removable panels hold #2
P&I Club	Noord Nederlandsche P&I Club		
		<b>Propulsion/Maneuvering</b>	
<b>Tonnage</b>		Main Engine	6.000 kW
DWAT	12.016 mt	Bow thruster	730 kW
DWCC	Abt. 11.000 mt		
Gross tonnage	8.999	Propeller	Controllable pitch propeller
Net tonnage	4.585	Rudder	Balanced
		Service speed	14,0 kn
<b>Dimensions</b>			
Length over all	142,95 m	<b>Bunkers/Ballast capacity</b>	
Length between p.p.	135,06 m	VLS fuel oil	672 m <sup>3</sup>
Breadth over all	18,90 m	Marine gas oil	282 m <sup>3</sup>
Breadth moulded	18,90 m	Fresh water	77 m <sup>3</sup>
Summer draught	7,945 m	Ballast water	4714 m <sup>3</sup>
Depth moulded	10,95 m		
Height keel to top mast	39,00 m		
<b>Hold/hatch sizes</b>		<b>Cargo gear</b>	
Number of holds/hatches	2/2	Cranes on starboard side	2 x Liebherr x 80 mt SWL
Hold capacity (w/o tween decks)	About 17.216 m <sup>3</sup> /609.001 ft <sup>3</sup>	Load/Outreach	80 mt/4.0 - 14.0 m 60 mt/4.0 - 18.0 m 40 mt/2.2 – 30.0 m 30 mt/2.2 – 32.0 m
#1 Lower hold dimensions	40,89 m x 15,80 m (narrow to 10,48 m and 5,24 m fore)	Tandem load	160 SWL
#1 Tween deck/hatch opening	40,89 m x 15,80 m (narrow to 5,24 m fore)	Lifting beam on board	16,7 m 160 SWL
#2 Lower hold dimensions	55,86 m X 15,80 m (narrow to 10,48 m aft)	Spreader beams on board	None
#2 Tween deck/hatch opening	55,86 m x 15,80 m		
# 1 and #2 hold height	12,08 m	<b>Cranes' lifting heights</b>	
#1/#2 height above/below TD	5.59 m/5.59 m	At 4,0 m outreach	40,9 m
		At 14,0 m outreach	38,2 m
		At 18,0 m outreach	36,0 m
		At 30,0 m outreach	22,6 m
		At 32,0 m outreach	17,4 m
Hold floor surface	2.706 m <sup>2</sup>		
Deck floor surface	1.529 m <sup>2</sup>		
<b>Container capacity</b>			
Hold capacity	312 TEU		
Deck capacity	372 TEU (80 reefer)		
Total	686 TEU		
Stack weight TEU/FEU	Tank top: 100/135 mt Hatch covers: 50/65 mt		
TEU slots for IMO class 1	All deck/holds (as per IMDG code)		

*All details are believed to be correct but without guarantee/HWS*

OCEAN7 Projects ApS  
Jyllandsgade 19A  
DK-7000 Fredericia  
Denmark

Phone: +45 7070 1311  
E-mail: europe@ocean7projects.com



12.08 meters

15.80 meters

27.90 meters

40.89 meters

48.85 meters

55.86 meters

6.99 meters

10.48 meters

2.6 meters

5.25 meters

5.59 meters

12.08 meters

15.80 meters

18 t/sqm

4 t/sqm