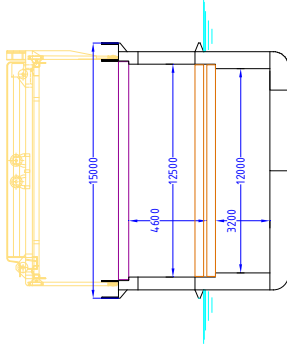
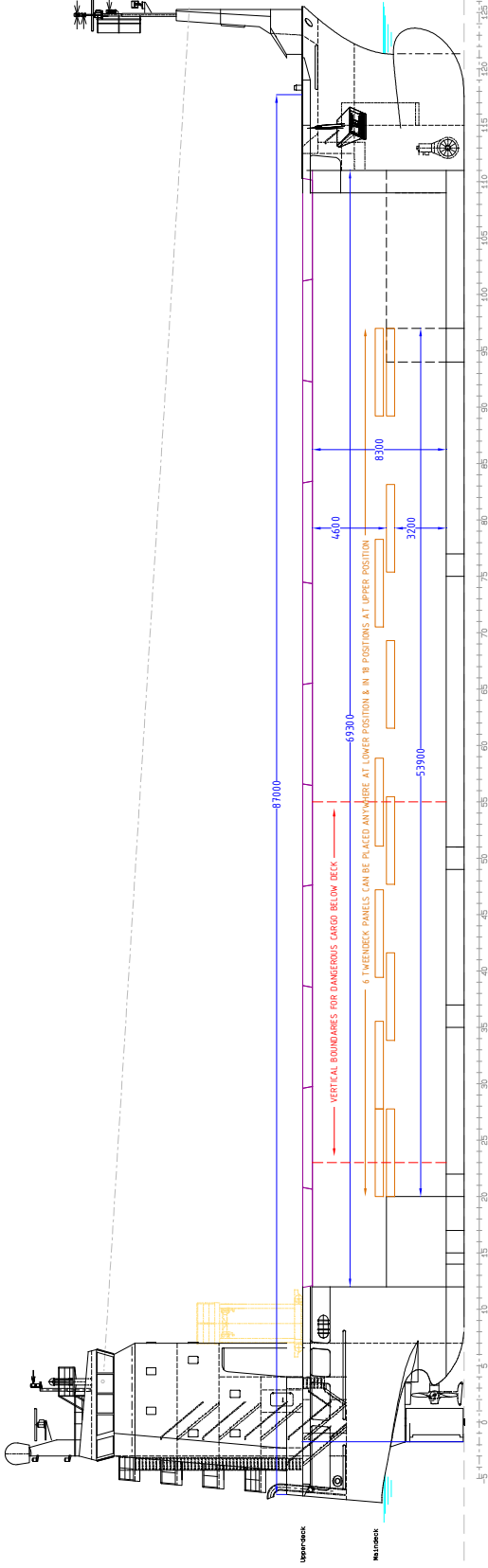




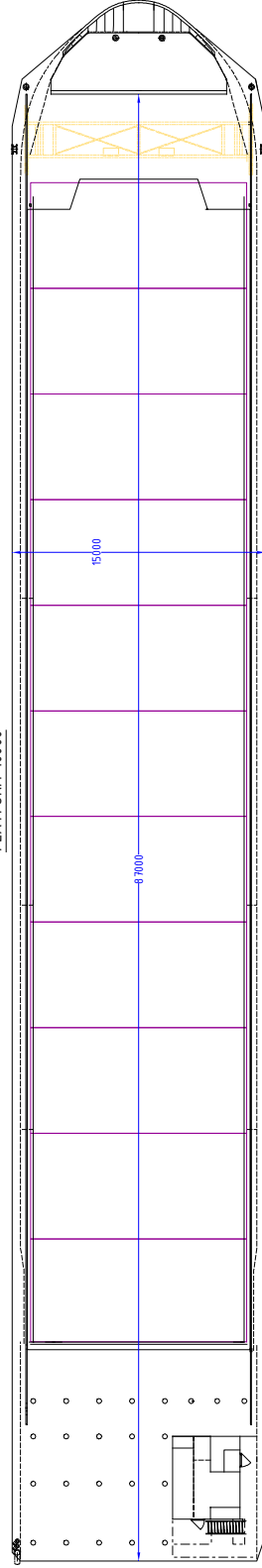
M/V 'NORDIC'

Valid as of 17 Feb 2021

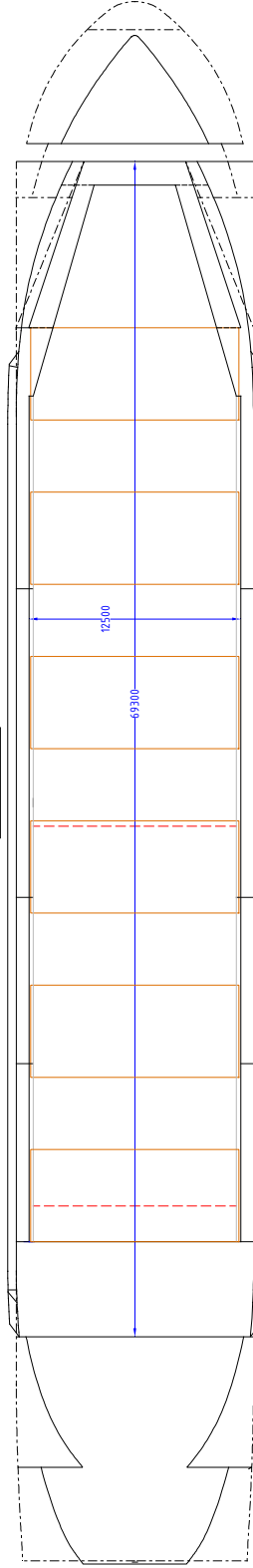
<p>Registration Call sign PBGD IMO number 9663001 Port of registry Urk Flag state The Netherlands Shipyard Shipkits Yard Year/Place of build 2013/Groningen Class Bureau Veritas Class notation I ✕ HULL ✕ MACH General cargo ship, Heavy Cargo, Unrestricted Navigation, ✕ AUT-UMS Approved for open top IMO fitted under deck Grain fitted</p> <p>P&I Club RaetsMarine</p> <p>Tonnage DWAT 3400 mt (summer draught) DWCC Abt. 3100 mt Gross tonnage 2989 Net tonnage 896</p> <p>Dimensions Length over all 92.90 m Length between p.p. 84.99 m Breadth over all 15.00 m Summer draught 5.00 m Depth main deck/upper deck 5.50 m/10.00 m Height from keel to top mast 28.47 m</p> <p>Hold/hatches sizes Number of holds/hatches 1/1 Hold capacity without tweendeck Abt. 6.197 m³/218.862 ft³ Lower hold dimensions 53.90 x 12.00 m Tweendeck dimensions 69.30 x 12.50 m Weather deck dimensions 87.00 x 15.00 m (except accommodation) Hold height 8.30 m Tanktop/Tweendeck height 3.20/4.60 m</p> <p>Tanktop floor surface 647 m² Tweendeck deck floor surface 866 m² Weatherdeck floor surface 1264 m²</p> <p>Tanktop narrowing in fore and aft part. Tweendeck narrowing in fore part.</p>	<p>Deck loads Tanktop 15.0 mt/m² Tweendeck steel area 12.0 mt/m² Tweendeck panels 2.5 mt/m² Hatch covers 3.5 mt /m²</p> <p>Container capacity Hold & deck capacity 304 TEU</p> <p>Hatchcovers/Tweendecks Type of hatchcovers Pontoon hatches Tweendeck panels 6 removable panels</p> <p>Propulsion/Maneuvering Main engine Wärtsilä 6L20 Propeller type Variable pitch Main engine output 1200 kW Bow thruster 300 kW Stern thruster 250 kW Service speed 11.0 kn</p> <p>Bunkers/Water capacity MGO 230 m³ Fresh water 73 m³ Ballast water 1770 m³</p>
	<p><i>All details are believed to be correct but without guarantee/HWS.</i></p> <p>OCEAN7 Projects ApS Jyllandsgade 19A DK-7000 Fredericia Denmark</p> <p>Phone: +45 7070 1311 E-mail: denmark@ocean7projects.com</p>



PLATFORM 10000



MAINDECK 5500



TANKTOP 1100

