

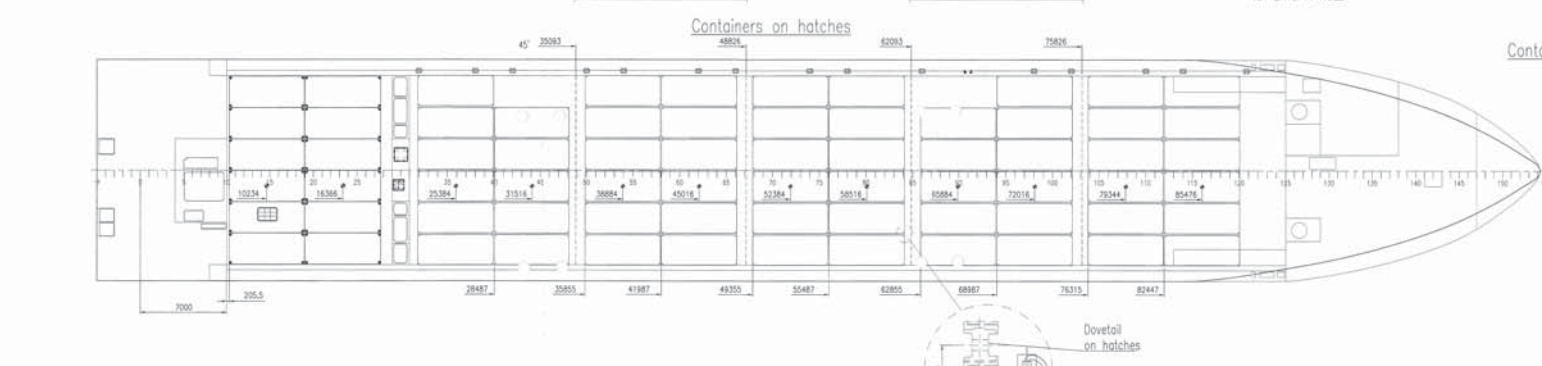
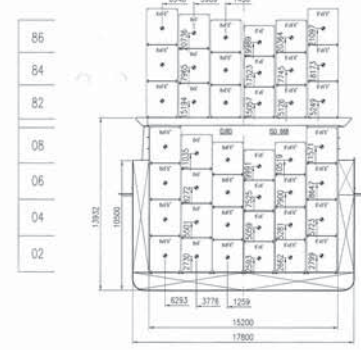
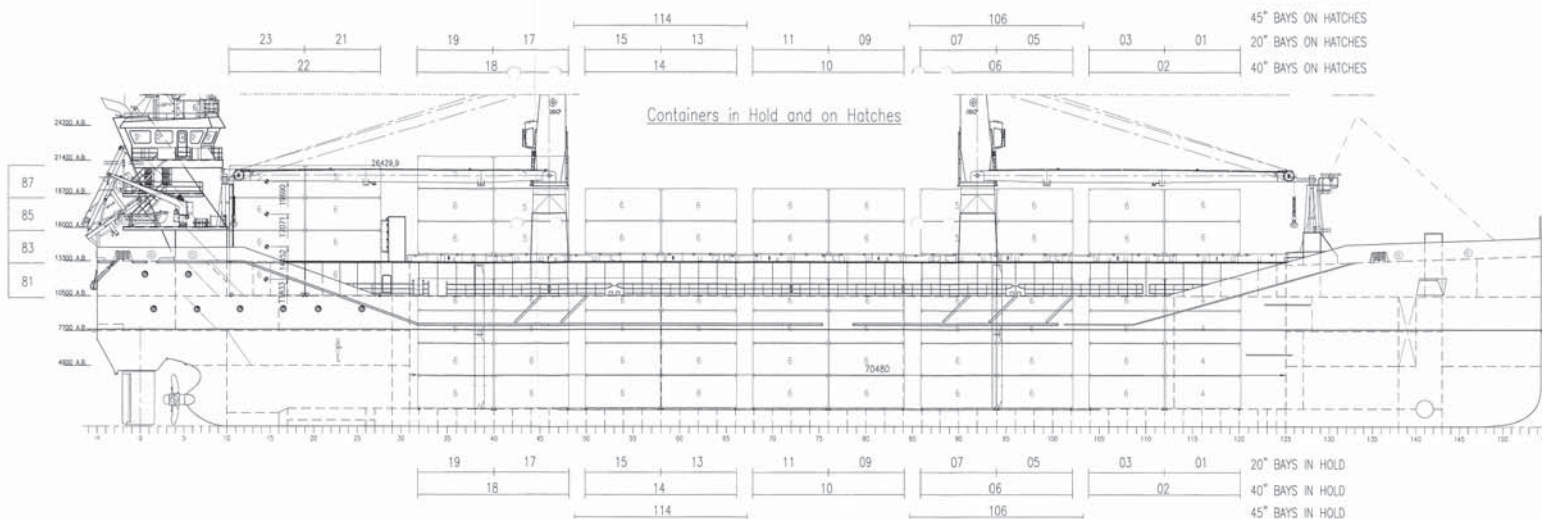


## M/V 'O7 LAFITE'

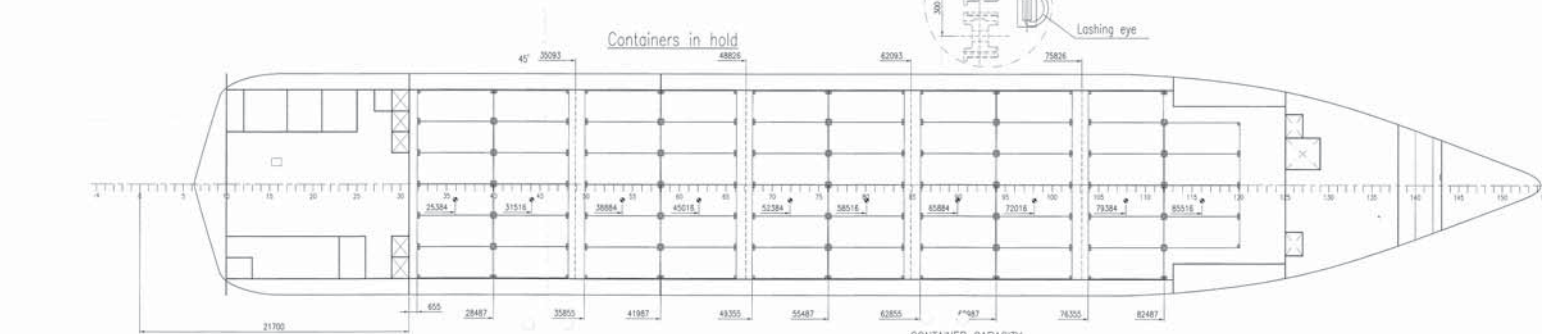
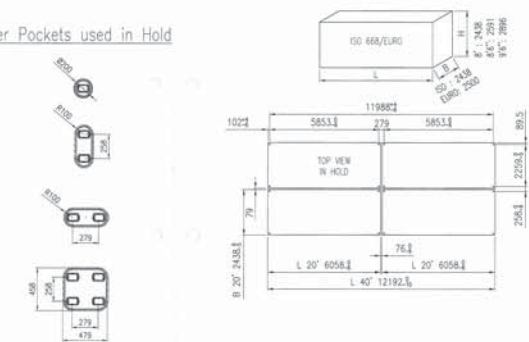
Valid as of 07 Apr 2023

<p><b>Registration</b>  Call sign V2HP5  IMO number 9534482  Port of registry St. John's  Flag state Antigua &amp; Barbuda  Shipyard Peters Shipyard B.V.  Year/Place of delivery 2013/Nn  Class DNV  Class notation ✘ 1A Multi-purpose dry cargo ship BIS Container EO Strengthened(IB) TMON(oil lubricated)</p> <p>P&amp;I Club Gard</p> <p><b>Tonnage</b>  DWAT 10.049 mt  DWCC Abt. 9.400 mt  Gross tonnage 6693  Net tonnage 3441</p> <p><b>Dimensions</b>  Length over all 116,26 m  Length between p.p. 112,76 m  Breadth over all 17,80 m  Breadth moulded 17,80 m  Summer draught 7,82 m  Depth moulded 10,50 m  Height keel to top mast 30,50 m</p> <p><b>Hold/hatch sizes</b>  Number of holds/hatches 1/1  Hold capacity About 12.415 m<sup>3</sup>/438.431 ft<sup>3</sup>  Lower hold dimensions 70,48 x 15,20 m (narrow fwd)  Tween deck dimensions 70,48 x 15,20 m (narrow fwd)  Hatch cover dimensions 70,48 x 15,20 m</p> <p>Hold height 11,79 m  Tanktop -&gt; Tween deck 6,15 m  Tween deck -&gt; Hatch cover 4,84 m  T/D 6-9 additional TT-&gt;TD 3,23 m  TD-&gt;HC 7,80 m</p> <p>Hold floor surface 1.049 m<sup>2</sup>  Tween deck surface 1.071 m<sup>2</sup></p> <p><b>Container capacity</b>  Hold capacity 232 TEU  Deck capacity 172 TEU (no reefer)  Total 404 TEU  Stack weight TEU/FEU Tanktop: 96/122 mt  Hatchcovers: 21/42 mt</p> <p>TEU slots for IMO class 1.1-1.6 1.4S On deck only (except ab. E/R)  On deck and hold</p>	<p><b>Deck loads</b>  Tanktop 18,0 mt/m<sup>2</sup>  Tween deck pontoons 3,5 mt/m<sup>2</sup>  Hatch covers 2,6 mt/m<sup>2</sup></p> <p><b>Hatch covers/Tween deck</b>  Type of hatch covers 8 pontoons  Tween deck pontoons 12 pontoons, capable of making 7 horizontal divisions</p> <p><b>Propulsion/Maneuvering</b>  Main Engine 4.000 kW  Bow thruster 450 kW  Propeller Variable pitch propeller  Rudder Balanced  Service speed 12,0 kn</p> <p><b>Bunkers/Ballast capacity</b>  Heavy fuel oil 568 m<sup>3</sup>  Marine gas oil 69 m<sup>3</sup>  Fresh water 95 m<sup>3</sup>  Ballast water 3984 m<sup>3</sup></p> <p><b>Cargo gear</b>  Cranes on port side 2 x hydraulic x 80 mt SWL  Load/Outreach 80 mt/3,0-14,0 m  55 mt/3,0-20,0 m  40 mt/2,5-24,0 m</p> <p>Tandem load 150 mt SWL  Lifting beam on board 1 x 11,80 m x 145 mt WLL  Connectable beams 2 x 4,39 m x 145 mt WLL</p> <p><b>Lifting heights</b>  At 3,0 m outreach 31,2 m  At 14,0 m outreach 18,0 m  At 20,0 m outreach 18,4 m  At 24,0 m outreach 11,2 m</p> <p><i>All details are believed to be correct but without guarantee/HWS</i></p> <p><b>OCEAN7 Projects ApS</b>  Jyllandsgade 19A  DK-7000 Fredericia  Denmark</p> <p>Phone: +45 7070 1311  E-mail: europe@ocean7projects.com</p>
--	---





Container Pockets used in Hold



Class: Lloyd's Register  
 = 100 AT LMC LMS SCM  
 Strengthened for Heavy Cargoes  
 Container cargoes in holds and on holdcovers  
 With the descriptive code ECDA (sign)  
 SOLAS-II regulation 19  
 Flag: Dutch Shipping Inspectorate, unrestricted waters.

**SOLE 10000**

**MAIN PARTICULARS**

Length o/a	ca. 116,340 m
Length (BRKD)	ca. 112,780 m
Length w/l	ca. 112,780 m
Hull length	ca. 112,780 m
Breadth max	ca. 17,80 m
Depth	ca. 10,50 m
Summer draught	ca. 7,80 m
Hold capacity	ca. 12,420 m <sup>3</sup> ca. 438,600 cuft
Netto loading	18 t/m <sup>2</sup>
Containers in hold	232 TEU (112 FEU + 8 TEU)
Containers on hatch	128 TEU (63 FEU + 4 TEU)
Containers on aft deck	48 TEU (33 FEU)
Tank capacities	
ballast	ca. 3984 m <sup>3</sup>
Fresh water	ca. 95,9 m <sup>3</sup>
Fuel (HT)	ca. 589 m <sup>3</sup>
Sea Oil	ca. 88,4 m <sup>3</sup>
CEI	ca. 6613 Gt
Engine power installed	ca. 3441 kW
	ca. 6000 HP

**CONTAINER CAPACITY**

Configurations only with 8'x8'	A-only 20'			B-comb. 40'+20'			C-comb. 45'+40'+20'		
	20'	40'	20'	45'	40'	20'	45'	40'	20'
TIER 02	58	28	2	12	16	2			
TIER 04	58	28	2	12	16	2			
TIER 06	58	28	2	12	16	2			
TIER 08	58	28	2	12	16	2			
<b>TOTAL IN HOLD</b>	<b>232</b>	<b>112</b>	<b>8</b>	<b>48</b>	<b>64</b>	<b>8</b>			
TIER 82	58	28	2	11	17	2			
TIER 84	58	28	2	11	17	2			
TIER 86	10	5	0	0	0	0			
<b>TOTAL ON HATCHES</b>	<b>126</b>	<b>61</b>	<b>4</b>	<b>22</b>	<b>34</b>	<b>4</b>			
TIER 81	12	6	0	0	6	0			
TIER 83	12	6	0	0	6	0			
TIER 85	12	6	0	0	6	0			
TIER 87	10	5	0	0	5	0			
<b>TOTAL ON AFT</b>	<b>46</b>	<b>23</b>	<b>0</b>	<b>0</b>	<b>23</b>	<b>0</b>			
<b>TOTAL OF SHIP</b>	<b>404</b>	<b>196</b>	<b>12</b>	<b>70</b>	<b>121</b>	<b>12</b>			

Tanktop load 18 ton/m<sup>2</sup>  
 Container stock load:  
 TEU: 96 ton  
 FEU: 122 ton

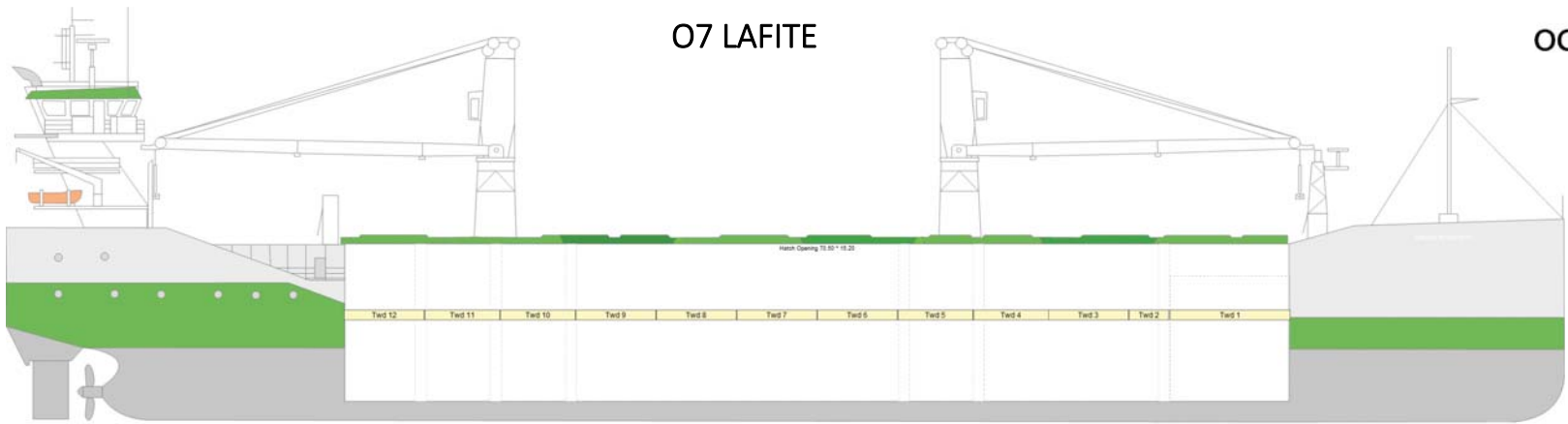
On hatches container lineload for stock:  
 TEU: 21 ton  
 FEU: 42 ton  
 See also container lashing manual.

7 Deck levels	4.8	18.00
8 Deck levels	4.8	18.00
9 Deck levels	4.8	18.00
10 Deck levels	4.8	18.00
11 Deck levels	4.8	18.00
12 Deck levels	4.8	18.00
13 Deck levels	4.8	18.00
14 Deck levels	4.8	18.00
15 Deck levels	4.8	18.00
16 Deck levels	4.8	18.00
17 Deck levels	4.8	18.00
18 Deck levels	4.8	18.00
19 Deck levels	4.8	18.00
20 Deck levels	4.8	18.00

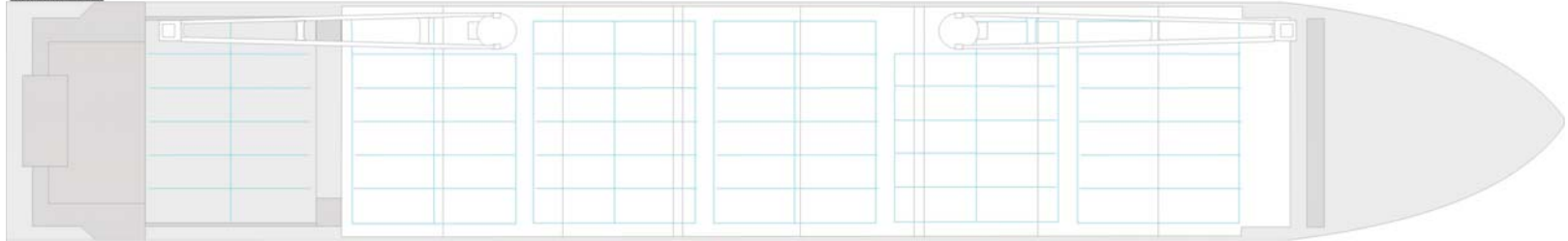
Title		Container Plan	
Project	SOLE 10000	Hub	900
Scale	A1 Scale: 1:100		
Created	20-02-2023		
Checked	20-02-2023		
Approved	20-02-2023		
Revision	01-02-2023		
Status: RD Rev: F		TAG: 11-0601	

SOLE 10000

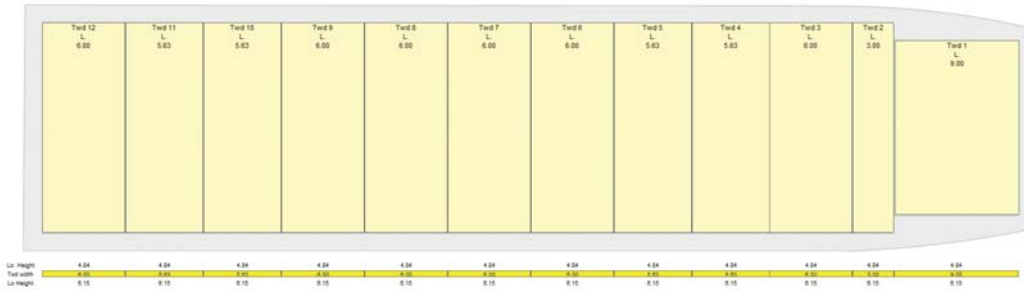
# O7 LAFITE



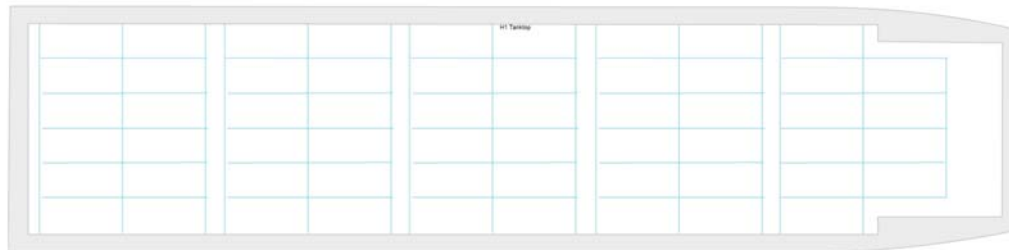
Top view Main Deck

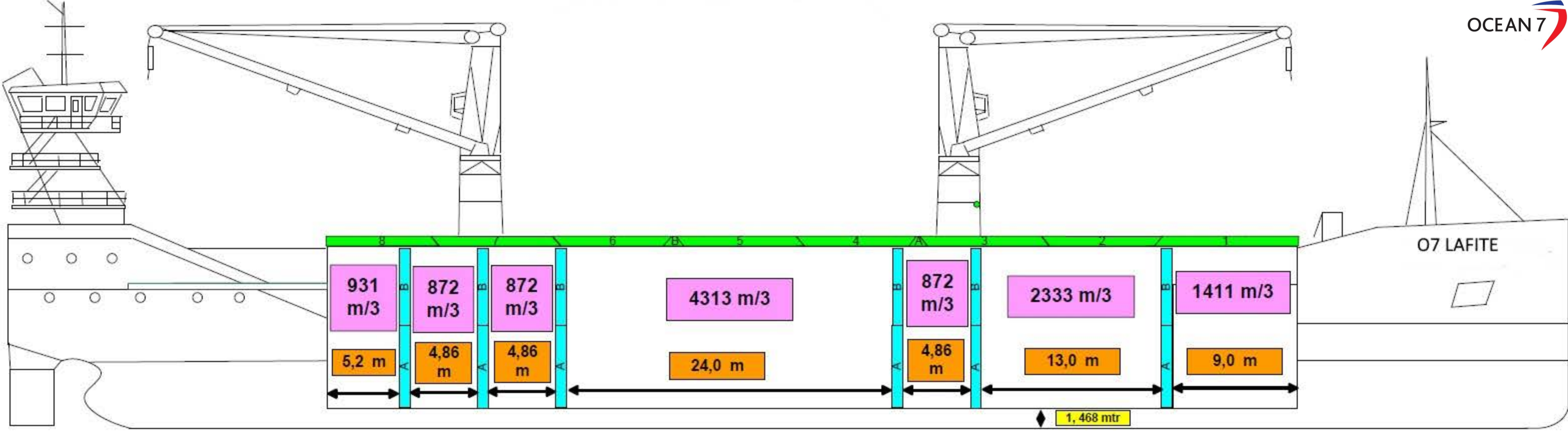


Top view Tweendeck



Top view Tank Top





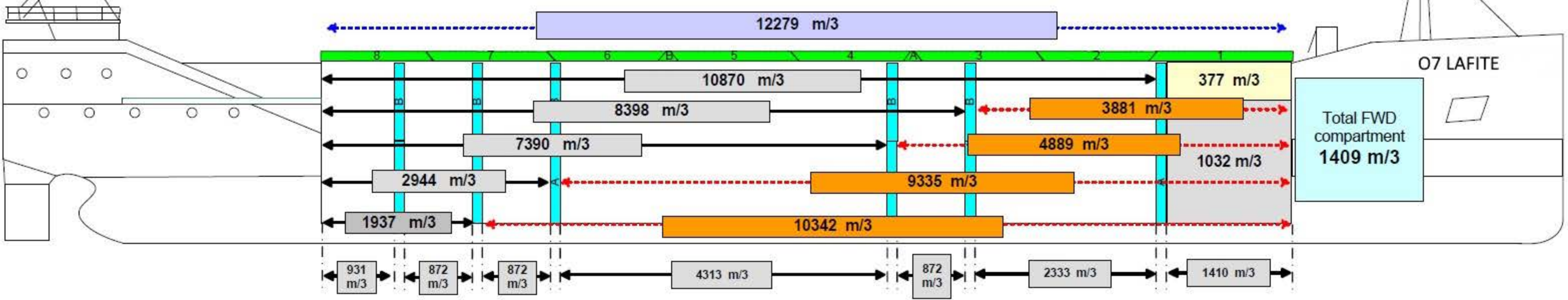
**Bulkhead particulars**

		Dimensions	Weight	Volume
A	6 pcs	5,97 x 15,14 x 0,76	24,61 tonn	68,96 m³
B	4 pcs	5,595 x 15,14 x 0,76	23,51 tonn	64,63 m³
C	1 pc	2,97 x 15,14 x 0,76	13,21 tonn	34,31 m³
D	1 pc	8,97 x 15,14 x 0,76	28,84 tonn	86,17 m³

**Possibility combination of bulkheads**

Clearance between hatchcover and bulkhead

- 1 — 0,225 mtr
- 2 — 0,225 mtr
- 3 — 0,600 mtr



**Total VOLUME without any bulkhead = 12415,57 m³**

