



Ship's particulars



M/V 'O7 LAFITE'

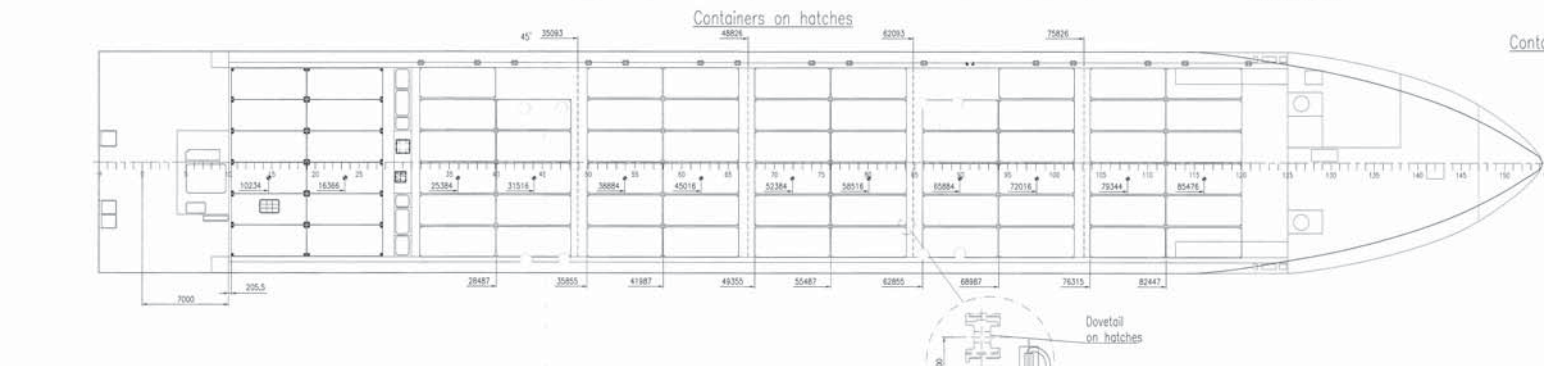
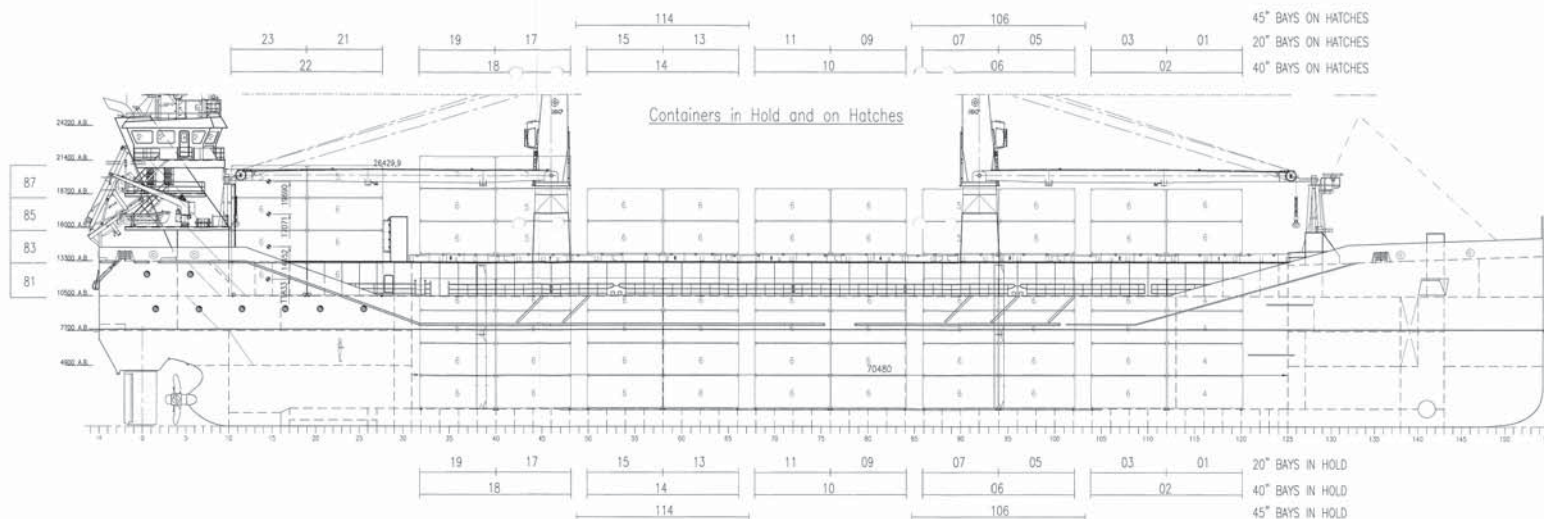
Valid as of 24 Feb 2025

Registration	
Call sign	V2HP5
IMO number	9534482
Port of registry	St. John's
Flag state	Antigua & Barbuda
Shipyard	Peters Shipyard B.V.
Year/Place of delivery	2013/Nn
Class	DNV
Class notation	✠ 1A Multi-purpose dry cargo ship BIS Container EO Strengthened(IB) TMON(oil lubricated)
P&I Club	Gard
Tonnage	
DWAT	10.049 mt
DWCC	Abt. 9.400 mt
Gross tonnage	6693
Net tonnage	3441
Dimensions	
Length over all	116,26 m
Length between p.p.	112,76 m
Breadth over all	17,80 m
Breadth moulded	17,80 m
Summer draught	7,82 m
Depth moulded	10,50 m
Height keel to top mast	30,50 m
Hold/hatch sizes	
Number of holds/hatches	1/1
Hold capacity	About 12.415 m ³ /438.431 ft ³
Lower hold dimensions	70,48 x 15,20 m (narrow fwd)
Tween deck dimensions	70,48 x 15,20 m (narrow fwd)
Hatch cover dimensions	70,48 x 15,20 m
Hold height	11,79 m
Tanktop -> Tween deck	6,15 m
Tween deck -> Hatch cover	4,84 m
T/D 6-9 additional TT->TD	3,23 m
TD->HC	7,80 m
Hold floor surface	1.049 m ²
Tween deck surface	1.071 m ²
Container capacity	
Hold capacity	232 TEU
Deck capacity	172 TEU (no reefer)
Total	404 TEU
Stack weight TEU/FEU	Tanktop: 96/122 mt Hatchcovers: 21/42 mt
TEU slots for IMO class 1.1-1.6	On deck only (except ab. E/R)
1.4S	On deck and hold

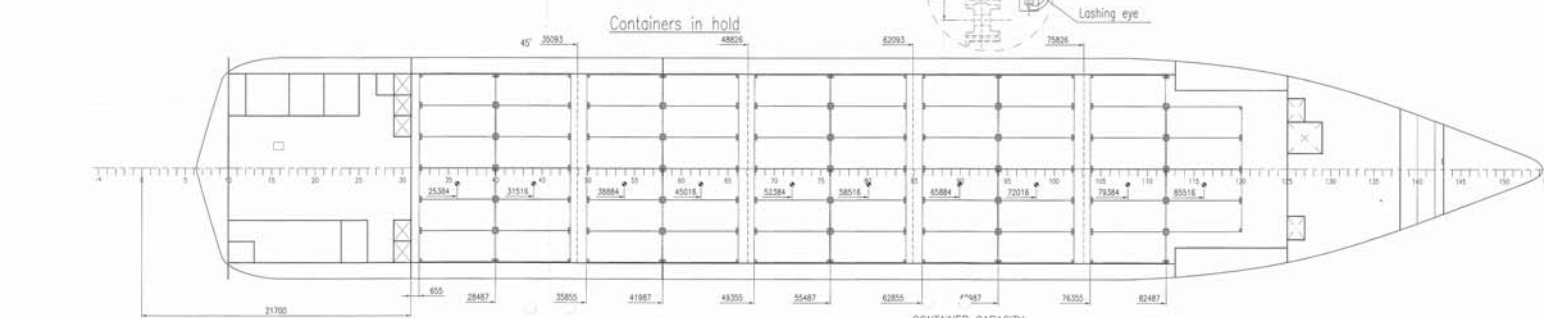
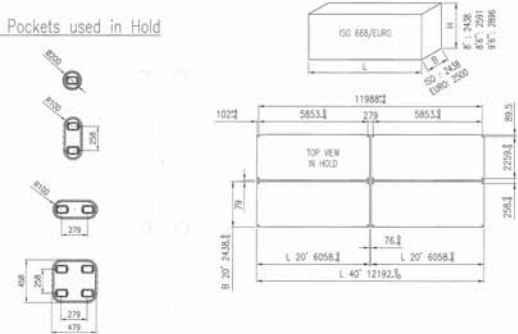
Deck loads	
Tanktop	18,0 mt/m ²
Tween deck pontoons	3,5 mt/m ²
Hatch covers	2,6 mt/m ²
Hatch covers/Tween deck	
Type of hatch covers	8 pontoons
Tween deck pontoons	12 pontoons, capable of making 7 horizontal divisions
Propulsion/Maneuvering	
Main Engine	4.000 kW
Bow thruster	450 kW
Propeller	Variable pitch propeller
Rudder	Balanced
Service speed	13,0 kn
Bunkers/Ballast capacity	
Heavy fuel oil	568 m ³
Marine gas oil	69 m ³
Fresh water	95 m ³
Ballast water	3984 m ³
Cargo gear	
Cranes on port side	2 x hydraulic x 80 mt SWL
Load/Outreach	80 mt/3,0-14,0 m 55 mt/3,0-20,0 m 40 mt/2,5-24,0 m
Tandem load	150 mt SWL
Lifting beam on board	1 x 11,80 m x 145 mt WLL
Connectable beams	2 x 4,39 m x 145 mt WLL
Lifting heights	
At 3,0 m outreach	31,2 m
At 14,0 m outreach	18,0 m
At 20,0 m outreach	18,4 m
At 24,0 m outreach	11,2 m

All details are believed to be correct but without guarantee/HWS

Phone: +45 70 70 13 11
E-mail: europe@ocean7projects.com
Web: ocean7projects.com



Container Pockets used in Hold



Class: Lloyd's Register
 = 100 AT LMC LMS SCM
 Strengthened for Heavy Cargoes
 Container cargoes in holds and on holdovers
 With the descriptive code ECDA (sign)
 SOLAS-II regulation 19
 Flag: Dutch Shipping Inspectorate, unrestricted waters.

SOLE 10000

MAIN PARTICULARS

Length o/s	ca. 116,360 m
Length (BRKD)	ca. 112,760 m
Length w/l	ca. 112,760 m
Hull length	ca. 112,760 m
Breadth max	ca. 17,80 m
Depth	ca. 10,50 m
Summer draught	ca. 7,80 m
Hold capacity	ca. 12,420 m ³ ca. 438,600 cu ft
Deck loading	ca. 18 t/m ²
Containers in hold	232 TEU (112 FEU + 8 TEU)
Containers on hatch	128 TEU (63 FEU + 4 TEU)
Containers on aft deck	48 TEU (23 FEU)
Tank capacities	
ballast	ca. 3984 m ³
Fresh water	ca. 95,8 m ³
Fuel (HFO)	ca. 589 m ³
Sea Oil	ca. 88,4 m ³
CEI	ca. 6613 GJ
Engine power installed	ca. 3441 kW
	ca. 6000 kW

CONTAINER CAPACITY

Configurations only with 8'x8'	A-only 20'		B-comb. 40'+20'		C-comb. 45'+40'+20'	
	20'	40'	20'	45'	40'	20'
TIER 02	58	26	2	12	16	2
TIER 04	58	28	2	12	16	2
TIER 06	58	28	2	12	16	2
TIER 08	58	28	2	12	16	2
TOTAL IN HOLD	232	112	8	48	64	8
TIER 82	58	25	2	11	17	2
TIER 84	58	28	2	11	17	2
TIER 86	10	5	0	0	0	0
TOTAL ON HATCHES	126	61	4	22	34	4
TIER 81	12	6	0	0	6	0
TIER 83	12	6	0	0	6	0
TIER 85	12	6	0	0	6	0
TIER 87	10	5	0	0	5	0
TOTAL ON AFT	46	23	0	0	23	0
TOTAL OF SHIP	404	196	12	70	121	12

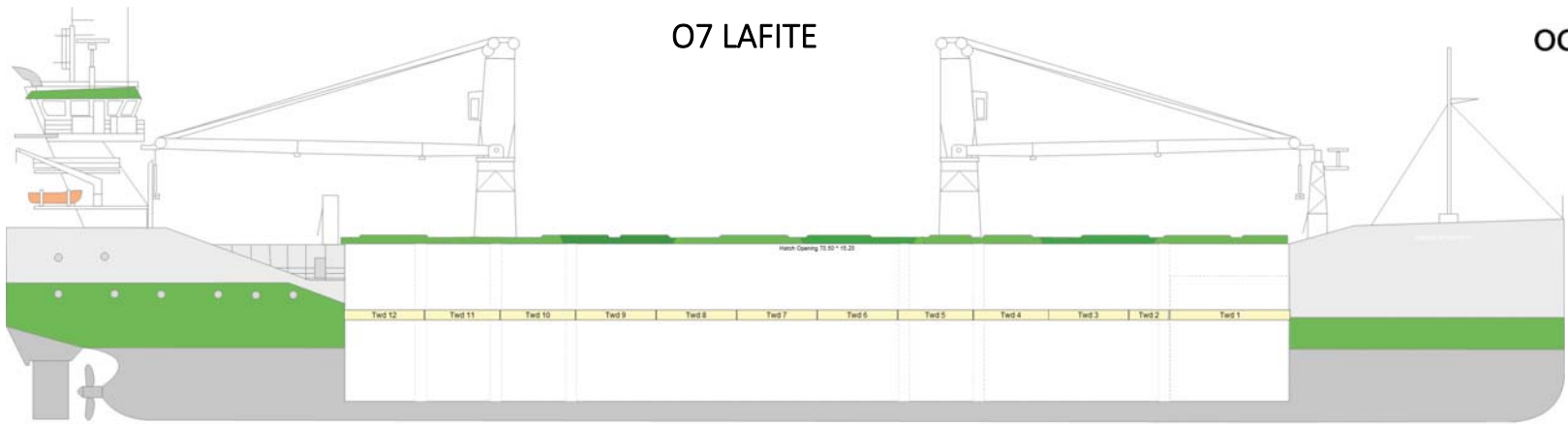
Tanktop load 18 ton/m²
 Container stock load:
 TEU: 96 ton
 FEU: 122 ton

On hatches container line/load for stock:
 TEU: 21 ton
 FEU: 42 ton
 See also container lashing manual.

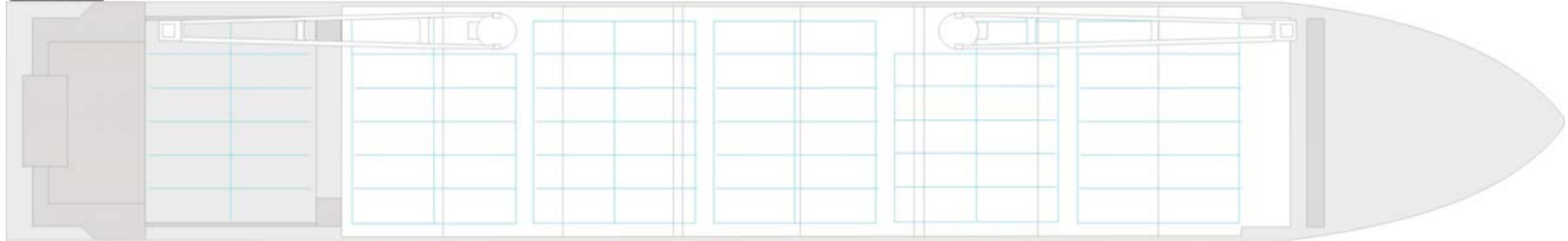
1) Drawn/checked	2) Date	3) Scale
4) Issued/rev. at	5) Revision	6) Description
7) Checked/rev. at	8) Revision	9) Description
10) Approved/rev. at	11) Revision	12) Description
13) Issued/rev. at	14) Revision	15) Description
16) Approved/rev. at	17) Revision	18) Description
19) Issued/rev. at	20) Revision	21) Description
22) Approved/rev. at	23) Revision	24) Description

Title		Container Plan	
Project	SOLE 10000	Hub	900
Scale	1:100		
Drawn	22-02-2010		
Checked	22-02-2010		
Approved	22-02-2010		
Revision	01-08-2010		
Scale	1:100		
Drawn	22-02-2010		
Checked	22-02-2010		
Approved	22-02-2010		
Revision	01-08-2010		
Scale	1:100		
Drawn	22-02-2010		
Checked	22-02-2010		
Approved	22-02-2010		
Revision	01-08-2010		
Scale	1:100		
Drawn	22-02-2010		
Checked	22-02-2010		
Approved	22-02-2010		
Revision	01-08-2010		
Scale	1:100		
Drawn	22-02-2010		
Checked	22-02-2010		
Approved	22-02-2010		
Revision	01-08-2010		
Scale	1:100		
Drawn	22-02-2010		
Checked	22-02-2010		
Approved	22-02-2010		
Revision	01-08-2010		
Scale	1:100		
Drawn	22-02-2010		
Checked	22-02-2010		
Approved	22-02-2010		
Revision	01-08-2010		
Scale	1:100		
Drawn	22-02-2010		
Checked	22-02-2010		
Approved	22-02-2010		
Revision	01-08-2010		
Scale	1:100		
Drawn	22-02-2010		
Checked	22-02-2010		
Approved	22-02-2010		
Revision	01-08-2010		
Scale	1:100		
Drawn	22-02-2010		
Checked	22-02-2010		
Approved	22-02-2010		
Revision	01-08-2010		
Scale	1:100		
Drawn	22-02-2010		
Checked	22-02-2010		
Approved	22-02-2010		
Revision	01-08-2010		
Scale	1:100		
Drawn	22-02-2010		
Checked	22-02-2010		
Approved	22-02-2010		
Revision	01-08-2010		
Scale	1:100		
Drawn	22-02-2010		
Checked	22-02-2010		
Approved	22-02-2010		
Revision	01-08-2010		
Scale	1:100		
Drawn	22-02-2010		
Checked	22-02-2010		
Approved	22-02-2010		
Revision	01-08-2010		
Scale	1:100		
Drawn	22-02-2010		
Checked	22-02-2010		
Approved	22-02-2010		
Revision	01-08-2010		
Scale	1:100		
Drawn	22-02-2010		
Checked	22-02-2010		
Approved	22-02-2010		
Revision	01-08-2010		
Scale	1:100		
Drawn	22-02-2010		
Checked	22-02-2010		
Approved	22-02-2010		
Revision	01-08-2010		
Scale	1:100		
Drawn	22-02-2010		
Checked	22-02-2010		
Approved	22-02-2010		
Revision	01-08-2010		
Scale	1:100		
Drawn	22-02-2010		
Checked	22-02-2010		
Approved	22-02-2010		
Revision	01-08-2010		
Scale	1:100		
Drawn	22-02-2010		
Checked	22-02-2010		
Approved	22-02-2010		
Revision	01-08-2010		
Scale	1:100		
Drawn	22-02-2010		
Checked	22-02-2010		
Approved	22-02-2010		
Revision	01-08-2010		
Scale	1:100		
Drawn	22-02-2010		
Checked	22-02-2010		
Approved	22-02-2010		
Revision	01-08-2010		
Scale	1:100		
Drawn	22-02-2010		
Checked	22-02-2010		
Approved	22-02-2010		
Revision	01-08-2010		
Scale	1:100		
Drawn	22-02-2010		
Checked	22-02-2010		
Approved	22-02-2010		
Revision	01-08-2010		
Scale	1:100		
Drawn	22-02-2010		
Checked	22-02-2010		
Approved	22-02-2010		
Revision	01-08-2010		
Scale	1:100		
Drawn	22-02-2010		
Checked	22-02-2010		
Approved	22-02-2010		
Revision	01-08-2010		
Scale	1:100		
Drawn	22-02-2010		
Checked	22-02-2010		
Approved	22-02-2010		
Revision	01-08-2010		
Scale	1:100		
Drawn	22-02-2010		
Checked	22-02-2010		
Approved	22-02-2010		
Revision	01-08-2010		
Scale	1:100		
Drawn	22-02-2010		
Checked	22-02-2010		
Approved	22-02-2010		
Revision	01-08-2010		
Scale	1:100		
Drawn	22-02-2010		
Checked	22-02-2010		
Approved	22-02-2010		
Revision	01-08-2010		
Scale	1:100		
Drawn	22-02-2010		
Checked	22-02-2010		
Approved	22-02-2010		
Revision	01-08-2010		
Scale	1:100		
Drawn	22-02-2010		
Checked	22-02-2010		
Approved	22-02-2010		
Revision	01-08-2010		
Scale	1:100		
Drawn	22-02-2010		
Checked	22-02-2010		
Approved	22-02-2010		
Revision	01-08-2010		
Scale	1:100		
Drawn	22-02-2010		
Checked	22-02-2010		
Approved	22-02-2010		
Revision	01-08-2010		
Scale	1:100		
Drawn	22-02-2010		
Checked	22-02-2010		
Approved	22-02-2010		
Revision	01-08-2010		
Scale	1:100		
Drawn	22-02-2010		
Checked	22-02-2010		
Approved	22-02-2010		
Revision	01-08-2010		
Scale	1:100		
Drawn	22-02-2010		
Checked	22-02-2010		
Approved	22-02-2010		
Revision	01-08-2010		
Scale	1:100		
Drawn	22-02-2010		
Checked	22-02-2010		
Approved	22-02-2010		
Revision	01-08-2010		
Scale	1:100		
Drawn	22-02-2010		
Checked	22-02-2010		
Approved	22-02-2010		
Revision	01-08-2010		
Scale	1:100		
Drawn	22-02-2010		
Checked	22-02-2010		
Approved	22-02-2010		
Revision	01-08-2010		
Scale	1:100		
Drawn	22-02-2010		
Checked	22-02-2010		
Approved	22-02-2010		
Revision	01-08-2010		
Scale	1:100		
Drawn	22-02-2010		
Checked	22-02-2010		
Approved	22-02-2010		
Revision	01-08-2010		
Scale	1:100		
Drawn	22-02-2010		
Checked	22-02-2010		
Approved	22-02-2010		
Revision	01-08-2010		
Scale	1:100		
Drawn	22-02-2010		
Checked	22-02-2010		
Approved	22-02-2010		
Revision	01-08-2010		
Scale	1:100		
Drawn	22-02-2010		
Checked	22-02-2010		</

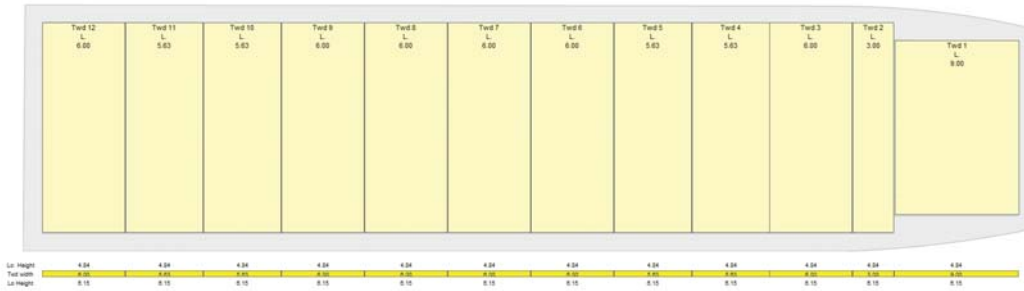
O7 LAFITE



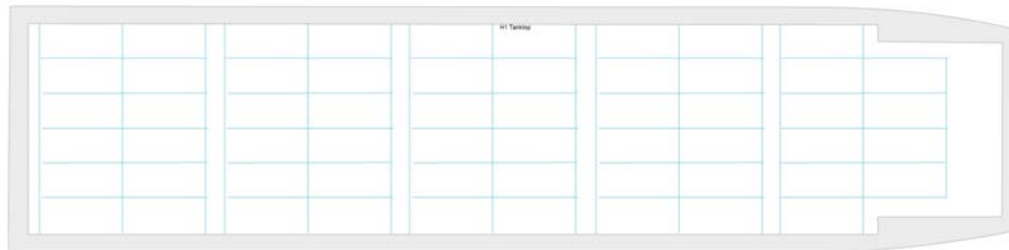
Top view Main Deck

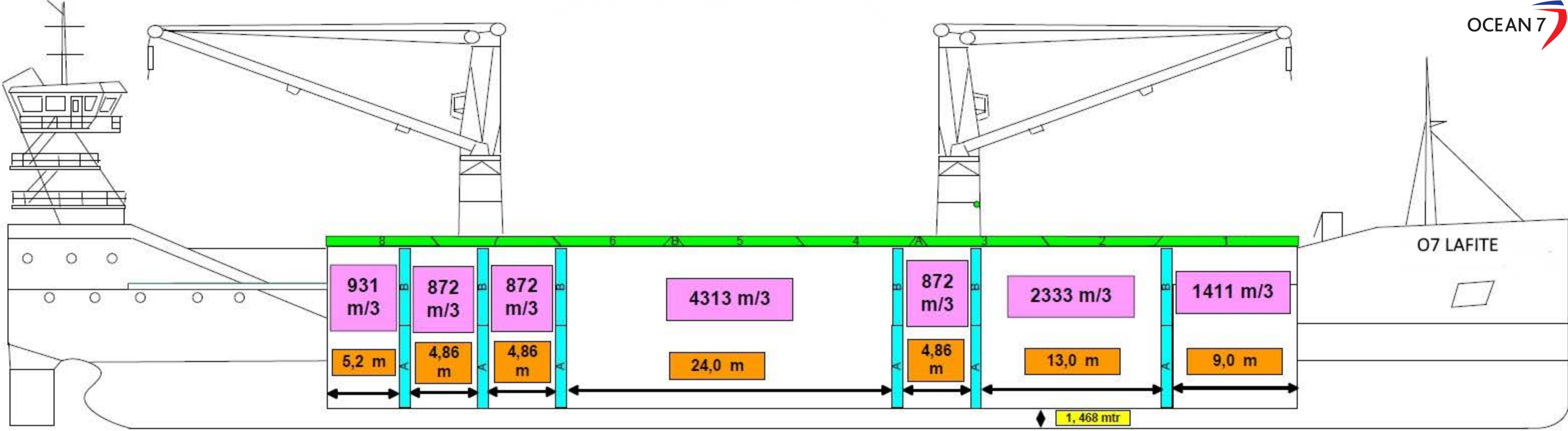


Top view Tweendeck



Top view Tank Top





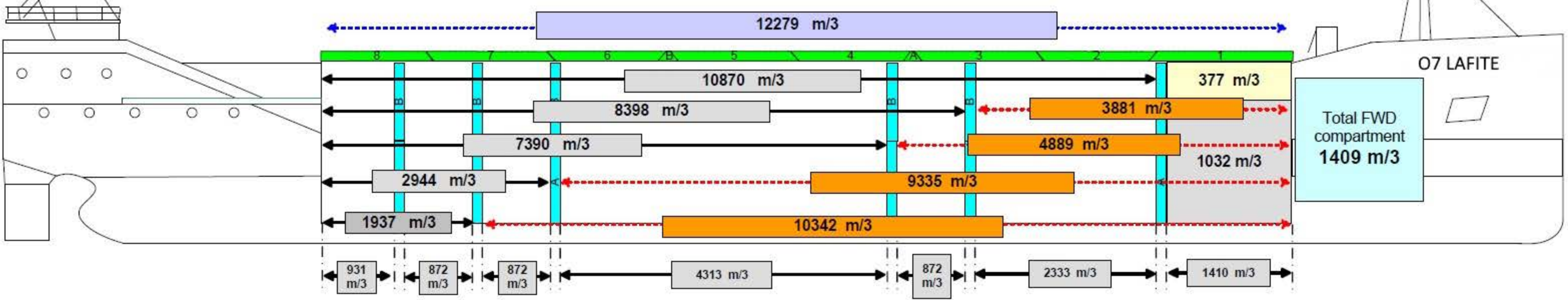
Bulkhead particulars

		Dimensions	Weight	Volume
A	6 pcs	5,97 x 15,14 x 0,76	24,61 tonn	68,96 m³
B	4 pcs	5,595 x 15,14 x 0,76	23,51 tonn	64,63 m³
C	1 pc	2,97 x 15,14 x 0,76	13,21 tonn	34,31 m³
D	1 pc	8,97 x 15,14 x 0,76	28,84 tonn	86,17 m³

Possibility combination of bulkheads

Clearance between hatchcover and bulkhead

- 1 — 0,225 mtr
- 2 — 0,225 mtr
- 3 — 0,600 mtr



Total VOLUME without any bulkhead = 12415,57 m³

