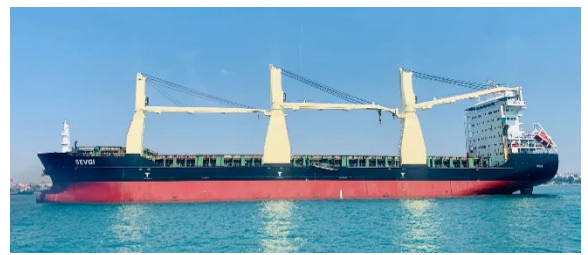




# Ship's particulars



## M/V 'OCEAN VOYAGER'

Valid as of 13 Aug 2024

<b>Registration</b>		<b>Deck loads</b>	
Call sign	3E7608	Tanktop	20,0 mt/m <sup>2</sup>
IMO number	9458406	Tween deck pontoons	3,2-4,0 mt/m <sup>2</sup>
Port of registry	Panama	Hatch covers	3,0 mt/m <sup>2</sup>
Flag state	Panama		
Shipyard	Huanghai Ship Building Co.		
Year/Place of delivery	2011/China		
Class	Overseas Marine Cert.Service		
Class notation	✕ 100 A5 E1 g IW Machinery ✕ MC E1 AUT		
	Multi-Purpose Dry Cargo Ship Equip. for carr. of container. Strengthened f. heavy Cargo	<b>Hatch covers/Tween deck</b>	
P&I Club	The American Club	Type of hatch covers	Hydraulic
		Tween deck pontoons	15 in hold # 2,3 and 4
<b>Tonnage</b>			
DWAT	28.164 mt	<b>Propulsion/Maneuvering</b>	
DWCC	Abt. 25.900 mt	Main Engine	6.810 kW
Gross tonnage	20.965	Bow thruster	No
Net tonnage	10.262	Propeller	Fixed (LH)
		Rudder	Balanced
		Service speed	11,5 kn
<b>Dimensions</b>			
Length over all	166,31 m	<b>Bunkers/Ballast capacity</b>	
Length between p.p.	159,33 m	VLSFOI	1.427 m <sup>3</sup>
Breadth over all/moulded	27,40 m	Marine gas oil	161 m <sup>3</sup>
Summer draught	10,10 m	Fresh water	236 m <sup>3</sup>
Depth moulded	14,20 m	Ballast water	10.593 m <sup>3</sup>
Height keel to top mast	47,45 m		
		<b>Cargo gear</b>	
<b>Hold/hatch sizes</b>		Cranes on port side	No. 1, 45 Mt SWL No. 2 and 3, 45/60/200 mt No. 2 and 3 incl. 45 mt hook
Number of holds/hatches	4/4		
Hold capacity	Abt. 39.102 m <sup>3</sup> /1.380.874 ft <sup>3</sup>	Load/Outreach	No. 1, 45/4,70-35,00 m No. 2 & 3, 200/4,50-35,00m
# 1 Lower hold dimensions	18,00 x 19,75 (shaped fwd)		
# 2-3 Lower hold dimensions	23,00 x 35,55 m	Tandem load	tba
# 4 Lower hold dimensions	23,00 x 25,28 m	Lifting beam on board	1 x WLL 366 mt
#1 hatch size	18,00 x 18,69 m (bxl)		
#2.3 hatch size	23,00 x 33,75 m		
#4 hatch size	23,00 x 24,88 m		
T/d pos 1, height above/below	5,50/8,20 m		
T/d pos 2, height above/below	8,10/5,60 m		
Hold height	14,88 m		
		<b>Lifting heights</b>	
# 1 hold floor surface	336 m <sup>2</sup>		
# 2-3 hold floor surface	776 m <sup>2</sup> (each)		
# 4 hold floor surface	581 m <sup>2</sup>		
<b>Container capacity</b>			
Hold capacity	686 TEU		
Deck capacity	904 TEU (100 reefer)		
Total	1590 TEU		
Stack weight TEU/FEU	# 1 hatch cover: 60/60 mt # 1 tank top: 100 mt # 2-4 hatch cover: 70/90 mt # 2-4 tank top: 125 mt		
TEU slots for IMO class 1	tba		

All details are believed to be correct but  
without guarantee/NN

Phone: +45 70 70 13 11  
E-mail: europe@ocean7projects.com  
Web: <https://ocean7projects.com>

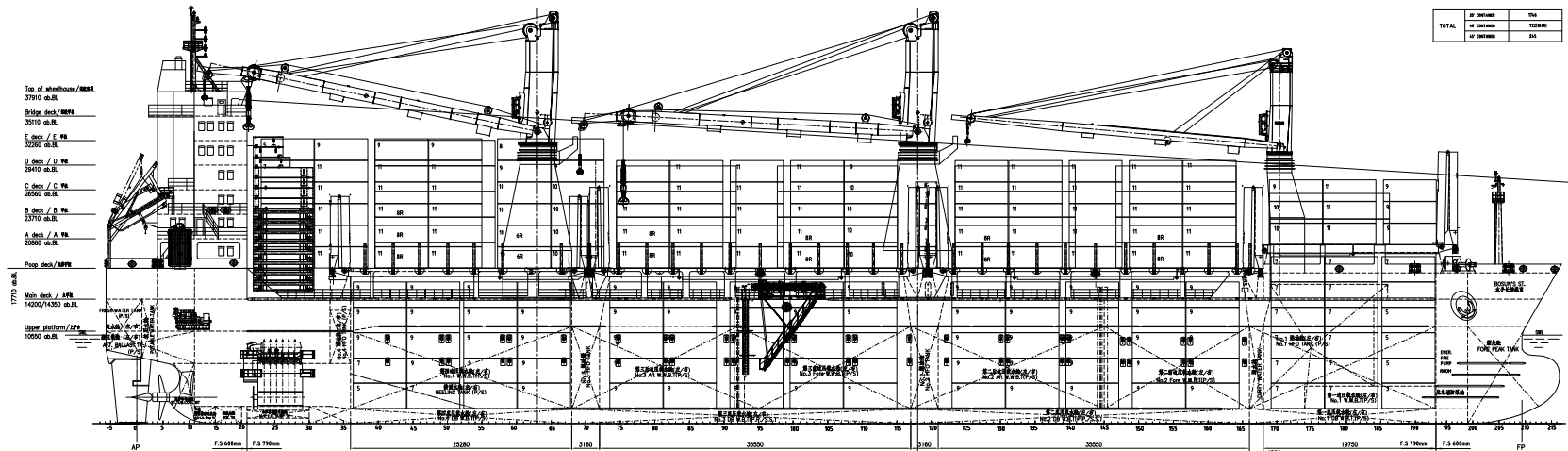
39	37	35	33	31	29	27	25	23	21	19	17	15	13	11	09	07	05	03	01	OF OVERMAN	100%
34		30		26		22		18		14		10		06		02		02		OF OVERMAN	100%
57	64	64	64	57	57	55	55	55	55	49	12	55	55	55	55	55	29	33	27	OF OVERMAN	100%
48		53	64(2x)	57(2x)		44	55(6x)		49		4	55(16x)		44		29	29	29	29	OF OVERMAN	100%

35	30	33	31	26	29	27	25	23	21	19	15	13	11	09	07	05	03	01	OF OVERMAN	100%
39	43	45	45	45	45	45	45	45	45	45	45	45	45	45	45	42	42	32	OF OVERMAN	100%

TOTAL	OF OVERMAN	100%
	OF OVERMAN	100%
	OF OVERMAN	100%



Top of wheelhouse/MEER  
37910 ab.RL

Bridge deck/MEER  
35170 ab.RL

C deck / C DECK  
32360 ab.RL

D deck / D DECK  
29410 ab.RL

E deck / E DECK  
26600 ab.RL

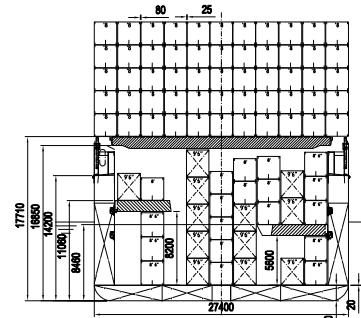
F deck / F DECK  
23710 ab.RL

A deck / A DECK  
20860 ab.RL

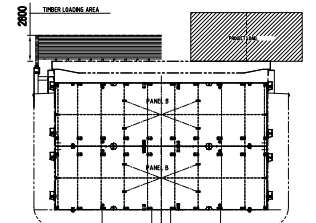
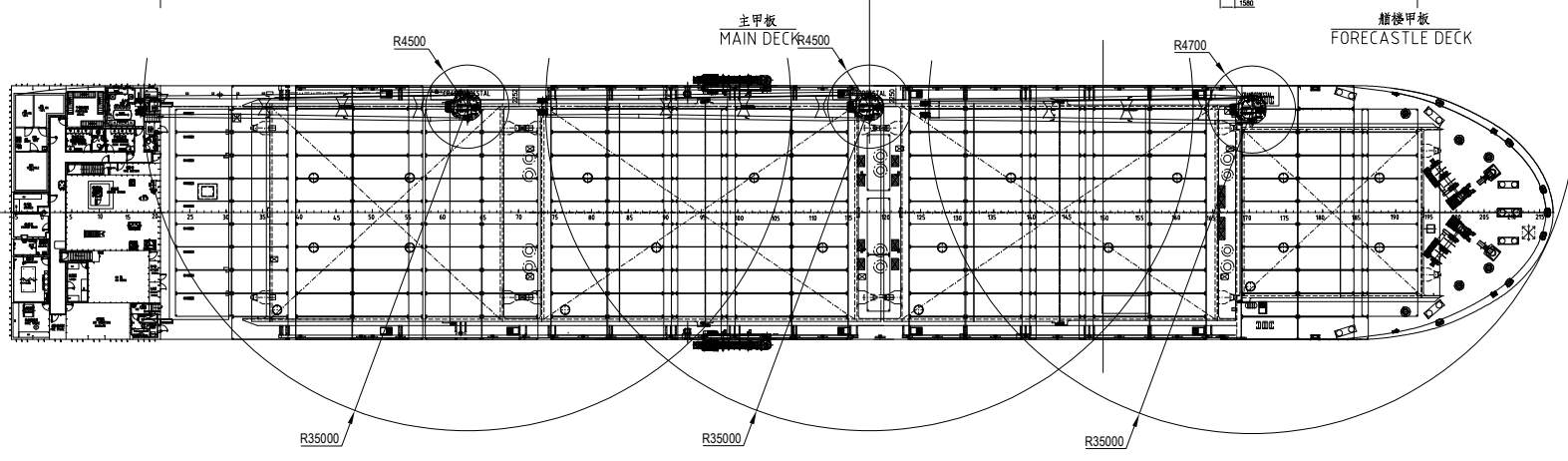
Prop. deck/MEER  
17770 ab.RL

Main deck / MEER  
14200/14300 ab.RL

Upper platform/MEER  
10050 ab.RL



TWEEN DECK & CONTAINER ARRANGEMENT



BULKHEAD ARRANGEMENT

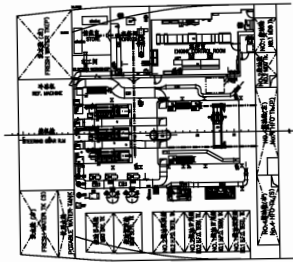
PRINCIPAL PARTICULARS

IMO No.	9450391
LENGTH (O/A)	198.31 m
LENGTH (B.P.)	156.35 m
BREADTH (ALL D)	27.40 m
DEPTH (ALL D)	14.20 m
DRAUGHT (DESIGN)	8.5 m
DRAUGHT (SCANTING)	10.1 m
DEADWEIGHT (SCANTING)	28084.976 MT
MAIN ENGINE	MAN B&W 5540MC-B
MCR	6810 kW x 146 RPM
CSR (DESIGN)	6468 kW x 143.5 RPM
SERVICE SPEED (Design, draft, CSR)	15.2kn
ENDURANCE	15000 nm/kt
COMPLEMENT	28+4 P
CONTAINER	1746TEU
	ON DECK 1008TEU
	IN HOLD 738TEU

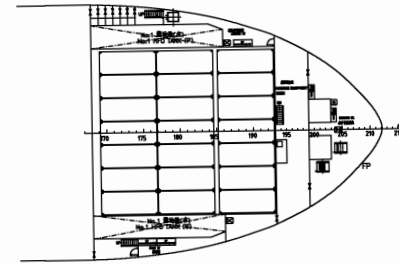
CLASS NOTATION:  
GL +100AG, MULTI-PURPOSE DRY CARGO SHIP,  
E1; Strengthened for Heavy Cargo; G; Equipped for Carriage of Containers; IWS; +MC; E1; SOLAS II-2 Reg.19

28000011 MFC		REV. NO.	REV. 03
GENERAL ARRANGEMENT		DATE	1/2
OCEAN 7		SCALE	1:1
OCEAN 7		DESIGNED BY	...
OCEAN 7		CHECKED BY	...
OCEAN 7		APPROVED BY	...

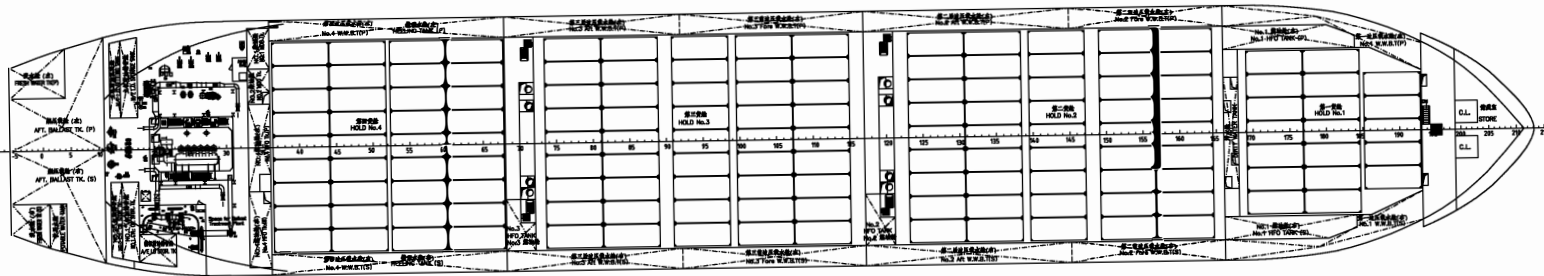
上平台  
UPPER PLATFORM



主甲板  
MAIN DECK

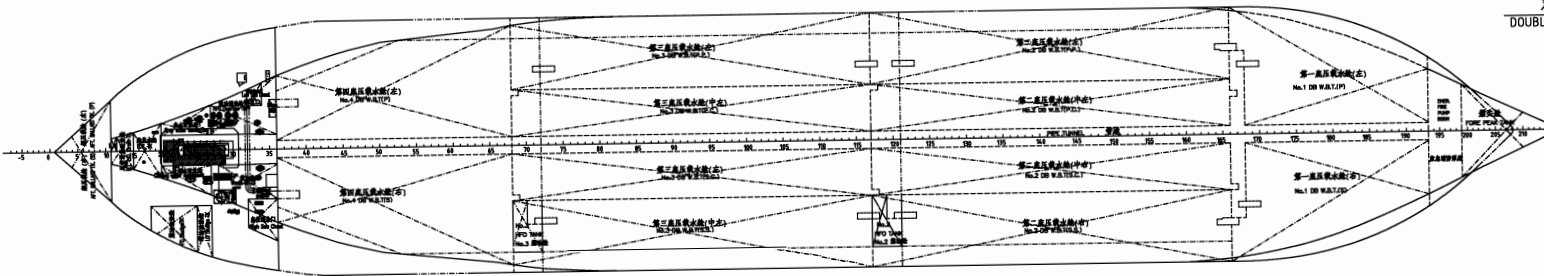


下平台  
LOWER PLATFORM



中甲板下  
BELOW TWEEN DECK

双层底  
DOUBLE BOTTOM



28000DWT MPC		NO. 100
船名: 尾考覽船		NO. 100712-100-000A
GENERAL ARRANGEMENT		DATE: 1.000
ODELY		SCALE: 1:100
ODELY		NO. 100712-100-000A
ODELY		NO. 100712-100-000A

We reserve the right of copyright for this drawing for the design as well as for the technical information contained therein. Without our permission, the drawing shall not be copied, reproduced, distributed, or otherwise used in any other manner without our written consent.