



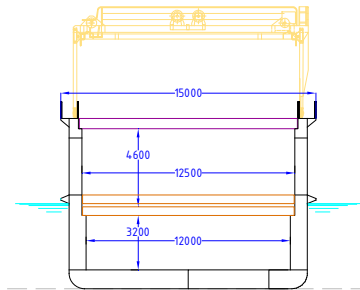
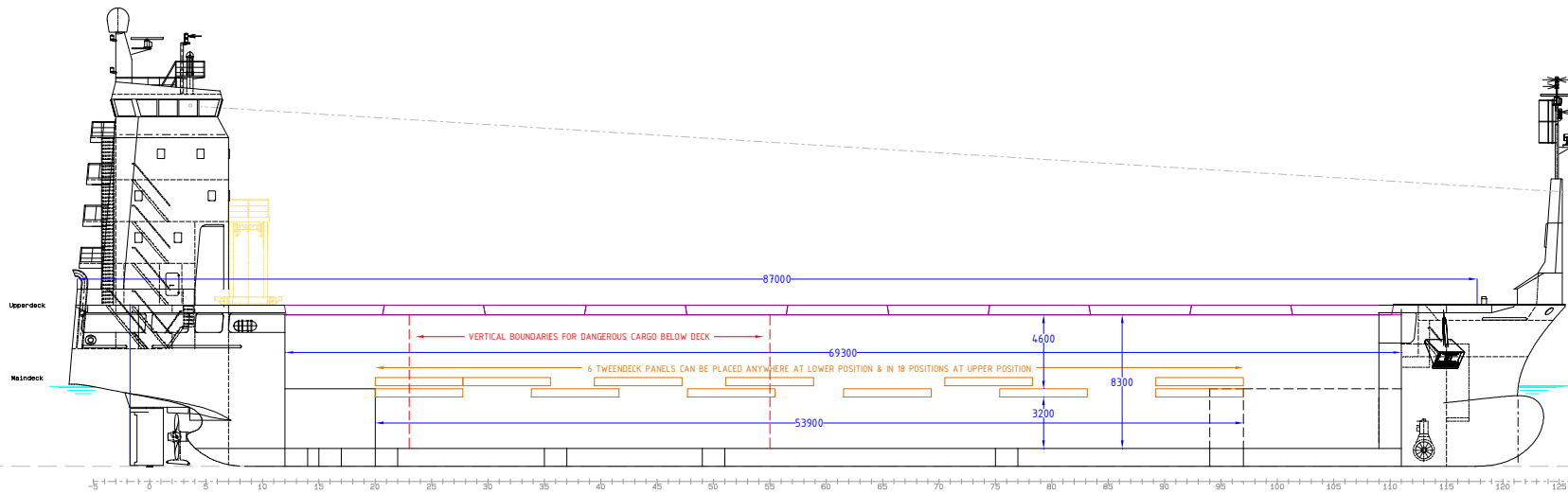
M/V 'OCEANIC'

Valid as of 09 Oct 2023

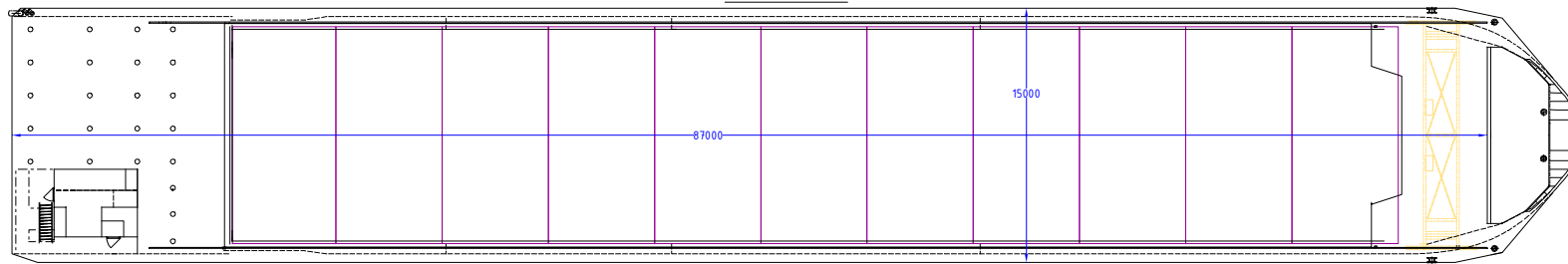
Registration		Deck loads	
Call sign	PBYH	Tanktop	15.0 mt/m ²
IMO number	9624550	Tweendeck steel area	12.0 mt/m ²
Port of registry	Urk	Tweendeck panels	2.5 mt/m ²
Flag state	The Netherlands	Hatch covers	3.5 mt /m ²
Shipyard	Shipkits Yard	Container capacity	
Year/Place of build	2012/Groningen	Hold & deck capacity	304 TEU
Class	Bureau Veritas	Hatchcovers/Tweendecks	
Class notation	I ✕ HULL ✕ MACH	Type of hatchcovers	Pontoon hatches
	General cargo ship, Heavy Cargo, Unrestricted Navigation, ✕ AUT-UMS	Tweendeck panels	6 removable panels
	Approved for open top	Propulsion/Maneuvering	
	IMO fitted under deck	Main engine	Wärtsilä 6L20
	Grain fitted	Propeller type	Variable pitch
P&I Club	RaetsMarine	Main engine output	1200 kW
Tonnage		Bow thruster	300 kW
DWAT	3400 mt (summer draught)	Stern thruster	250 kW
DWCC	Abt. 3100 mt	Service speed	11.0 kn
Gross tonnage	2989	Bunkers/Water capacity	
Net tonnage	896	MGO	230 m ³
Dimensions		Fresh water	73 m ³
Length over all	92.90 m	Ballast water	1770 m ³
Length between p.p.	84.99 m		
Breadth over all	15.00 m		
Summer draught	5.00 m		
Depth main deck/upper deck	5.50 m/10.00 m		
Height from keel to top mast	28.47 m		
Hold/hatches sizes			
Number of holds/hatches	1/1		
Hold capacity without tweendeck	Abt. 6.197 m ³ /218.862 ft ³		
Lower hold dimensions	53.90 x 12.00 m		
Tweendeck dimensions	69.30 x 12.50 m		
Weather deck dimensions	87.00 x 15.00 m (except accommodation)		
Hold height	8.30 m		
Tanktop/Tweendeck height	3.20/4.60 m		
Tanktop floor surface	647 m ²		
Tweendeck deck floor surface	866 m ²		
Weatherdeck floor surface	1264 m ²		
	Tanktop narrowing in fore and aft part.		
	Tweendeck narrowing in fore part.		

All details are believed to be correct but without guarantee/HWS.

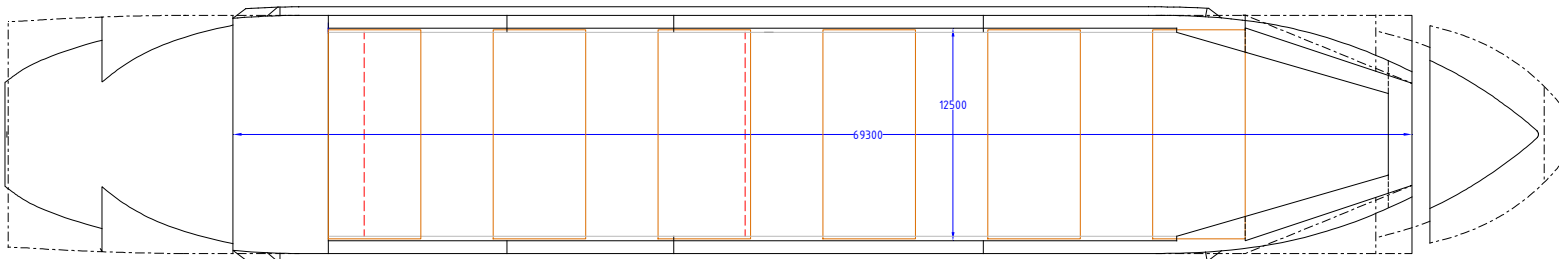
Phone: +45 70 70 13 11
E-mail: europe@ocean7projects.com
Web: ocean7projects.com



PLATFORM 10000



MAINDECK 5500



TANKTOP 1100

