



Ship's particulars



M/V 'ONEGO OLZA'

Valid as of 23 Apr 2025

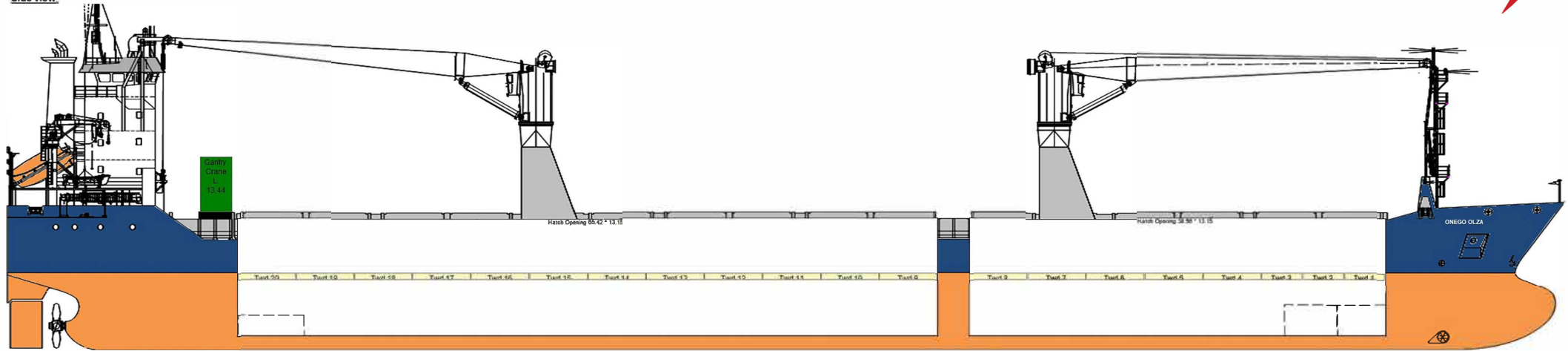
Registration	V2QD7
Call sign	9511648
IMO number	St. John's
Port of registry	Antigua & Barbuda
Flag state	Damen Shipyard/NL
Shipyards	2010/Shanghai
Year/Place of delivery	DNV
Class	I ✕ HULL ✕ MACH, gen. cargo
Class notation	Ship-heavycargo; unrestricted Navigation; ✕ AUT-UMS
	✕ SYS-NEQ-1
	Ice class 1A SF
P&I Club	Gard
Tonnage	
DWAT	10.999 mt
DWCC	Abt. 10.000 mt
Gross tonnage	7.878
Net tonnage	3.909
Dimensions	
Length over all	145,56 m
Length between p.p.	138,62 m
Breadth over all	18,25 m
Breadth moulded	18,25 m
Summer draught	7,40 m
Depth moulded	10,30 m
Height keel to top mast	36,40 m
Hold/hatch sizes	
Number of holds/hatches	2/2
Hold capacity	About 14.807 m ³ /522.905 ft ³
Hold # 1	38,95 x 13,15 (narrow fwd to 10,53 and 7,86 m)
Hold # 2	65,42 x 13,15 (narrow aft to 7.86 m)
Hold height	11,05 m
Height above/below tween deck	5,16/5,23 m
Hold floor surface	1.340 m ²
Tween deck floor surface	1.340 m ²
Deck floor surface	1.399 m ²
Container capacity	
Hold capacity	302 TEU
Deck capacity	369 TEU (60 reefer)
Total	671 TEU
Stack weight TEU/FEU	Tank top: 100/140 mt
	Hatch covers: 28/52 mt
TEU slots for IMDG class 1.1-1.6	On deck only (less above ER)
Class 1.4S	In hold #1 & #2 and on deck

Deck loads	
Tanktop	20,00 mt/m ²
Tween deck	3,50 mt/m ²
Hatch cover	1,75 mt/m ²
Hatch covers/Tween deck	
Type of hatch covers	6 + 10 pontoon covers, operated by ship's gantry
Tween deck pontoons	9 + 11 pontoons
Propulsion/Maneuvering	
Main Engine	4.320 kW
Bow thruster	650 kW
Propeller	Controllable pitch propellers
Rudder	Semi balanced
Service speed	13,5 kn
Bunkers/Ballast capacity	
Heavy fuel oil	654 m ³
Marine gas oil	79 m ³
Fresh water	75 m ³
Ballast water	5038 m ³
Cargo gear	
Cranes on stbd side	2 x Liebherr x 80 mt SWL
Load/Outreach	80 mt/3,5-14,0 m
	60 mt/3,5-16,0 m
	40 mt/3,5-28,0m
	32 mt/3,5-34,0m
Tandem load	160 mt SWL
Lifting beam on board	1 x 26,5 m x 160 mt WLL
Spreader beams on board	2 x 6,5 m x 80 mt WLL
	2 x 4,0 m x 80 mt WLL

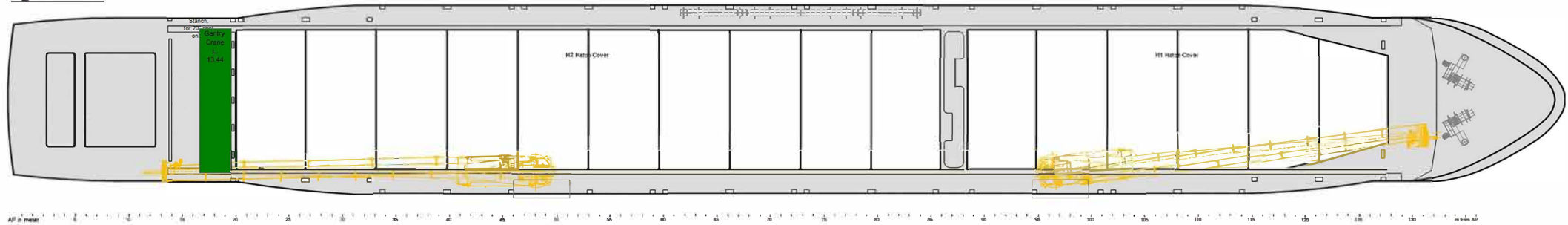
All details are believed to be correct but without guarantee/HWS

Phone: +45 70 70 13 11
 E-mail: europa@ocean7projects.com
 Web: <https://ocean7projects.com>

Side view



AP Frames
Top view Main Deck

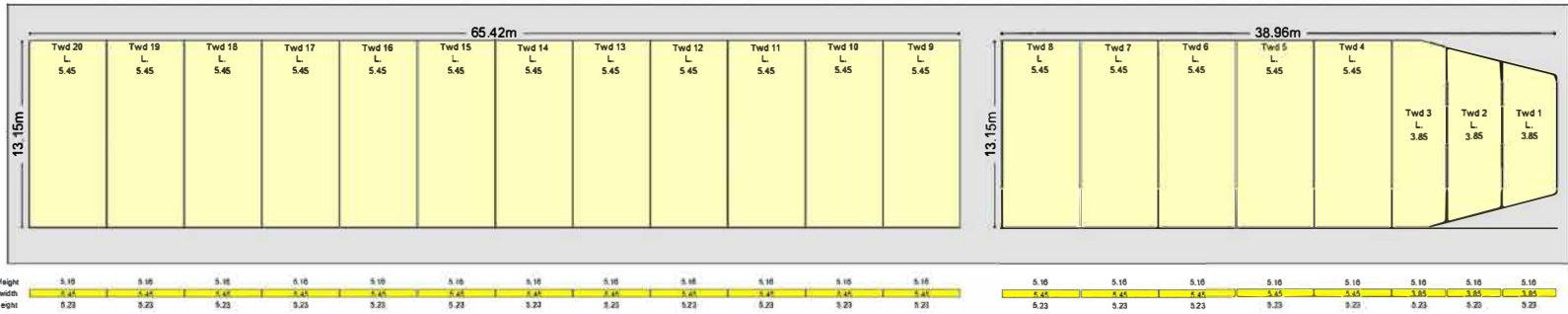


AP Frames
Top view Tweeneck

Container Intake
20'
Hold 302
Deck 369

Total 671
(60 Reefer Plugs on Main Deck)

Stack Weights 20' 40'
Deck 28mt 48mt
Hold 100mt 140mt



Uniform Load
Hatch Cover 1.75mt/m2
Tween Deck 3.50mt/m2
Tank Top 20.00mt/m2

Cranes 1 & 2 Range (80mt SWL)
80t / 3.5 - 14.0m
60t / 3.5 - 16.0m
40t / 3.5 - 28.0m
32t / 3.5 - 34.0m

Top view Tank Top

