



## M/V 'PACIFIC VENTURE'

Valid as of 22 May 2024

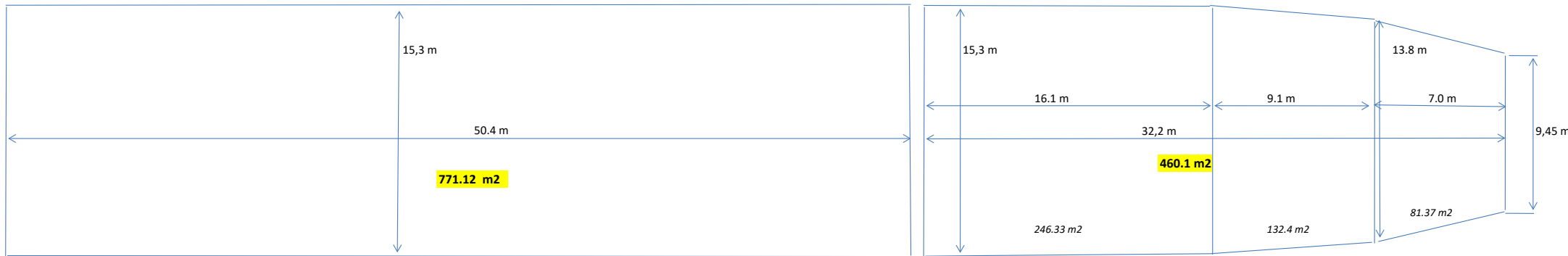
<b>Registration</b>	J7AY2	<b>Container capacity</b>	Hold capacity 264 TEU
Call sign	J7AY2	Deck capacity 334 TEU (44 reefer)	Total 598 TEU (w TD on board)
IMO number	9743045	Total @ 14 mt 400 TEU (w TD on board)	436 TEU (w/o TD on board)
Port of registry	Portsmouth	Stack weight TEU/FEU	Tanktop: 96/120 mt
Flag state	Dominica		Hatchcovers: 45/60 mt
Shipyard	Jiangsu Hongqiang M.H.I. Co	TEU slots for IMO class 1	334 on deck
Year/Place of delivery	2016/China	<b>Deck loads</b>	
Class	Bureau Veritas	Tanktop 18.0 mt/m <sup>2</sup>	
Class notation	I ✕ HULL ✕ MACH	Tween deck pontoons 2.5 mt/m <sup>2</sup>	
	General Cargo Ship, Heavy Cargo, Container Ship, Ice class 1B, AUT-UMS, Unrestricted Navigation	Hatch covers 3.5 mt/m <sup>2</sup>	
P&I Club	The Shipowners' Mutual P&I	<b>Hatch covers/Tween deck</b>	
	Australia MO32 Compliant	Type of hatch covers( 1+2) 5+8 sequential pontoons	
<b>Tonnage</b>		Tween dk. pontoons (1+2) 6+10 removable pontoons	
DWAT	8845 mt (summer)	2+4 tween-decks can be used as vertical bulkheads	
DWCC	abt. 7800 mt	<b>Propulsion/Manoeuvring</b>	
Gross tonnage	7522	Main Engine 3840 kW	
Net tonnage	3301	Bow thruster 350 kW	
<b>Dimensions</b>		Propeller Fixed pitch propeller	
Length over all	122.20 m	Rudder Semi balanced rudder	
Length between p.p.	116.82 m	Service speed abt. 13.0 kn	
Breadth over all	19.80 m	<b>Bunkers/Ballast capacity</b>	
Breadth moulded	19.80 m	Heavy fuel oil 616 m <sup>3</sup>	
Summer draught	7.30 m	L.S. Heavy fuel oil 138 m <sup>3</sup>	
Depth moulded	10.70 m	Marine gas oil 139 m <sup>3</sup>	
Height keel to top mast	37.36 m	Lubricating oil 46 m <sup>3</sup>	
		Fresh water 256 m <sup>3</sup>	
<b>Hold/hatch sizes</b>		Ballast water 3467 m <sup>3</sup>	
Number of holds/hatches	2/2	<b>Cargo gear</b>	
Hold capacity	About 13242 m <sup>3</sup> /467636 ft <sup>3</sup>	Cranes on port side 2 x 55 mt SWL	
# 1 Lower hold dimensions	32.20 x 15.30/13.80/9.44 m	Load/Outreach 55 mt/4.0-26.0 m	
# 2 Lower hold dimensions	50.40 x 15.30 (narrow aft 11.2 m upto 2.62 m height to a width of abt. 6 m)	Distance between cranes 44.80 m	
#1 Tween deck dimensions	32.20 x 15.3/14.4/12.8/9.4 m	Combined lift Upto 100 mt SWL (no tandem)	
#2 Tween deck dimensions	50.40 x 15.30 m	<b>Lifting heights</b>	
#1 hatch dimensions	32.20 x 15.3/13.8/9.44 m	At 4.0 m outreach 35.0 m	
#2 hatch dimensions	50.40 x 15.30 m	At 26.0 m outreach 27.1 m	
Hold height	10.90 m		
	10.50 m (below hinges)		
Hold 1:			
Tweed deck 1 <sup>st</sup> Pos. TT/TD/HC	6.70/3.00 m		
Tween deck 2 <sup>nd</sup> Pos. TT/TD/HC	5.30/4.40 m		
Hold 2:			
Tween deck 1 <sup>st</sup> Pos. TT/TD/HC	6.70/3.00 m		
Tween deck 2 <sup>nd</sup> Pos. TT/TD/HC	5.30/4.40 m		
Tween deck 3 <sup>rd</sup> Pos. TT/TD/HC	3.40/6.30 m		
Hold floor surface	1105 m <sup>2</sup>		
T/D floor surface	1231 m <sup>2</sup>		

*All details are believed to be correct but without guarantee/HWS*

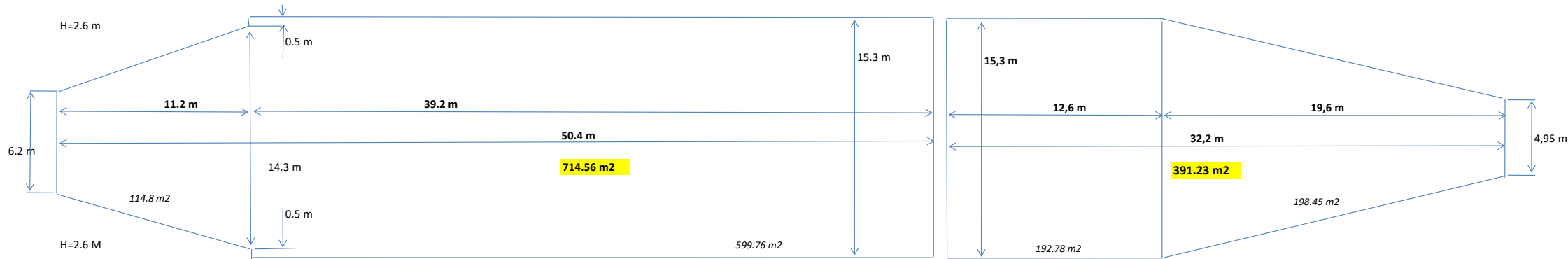
Phone: +45 70 70 13 11  
E-mail: europe@ocean7projects.com  
Web: ocean7projects.com

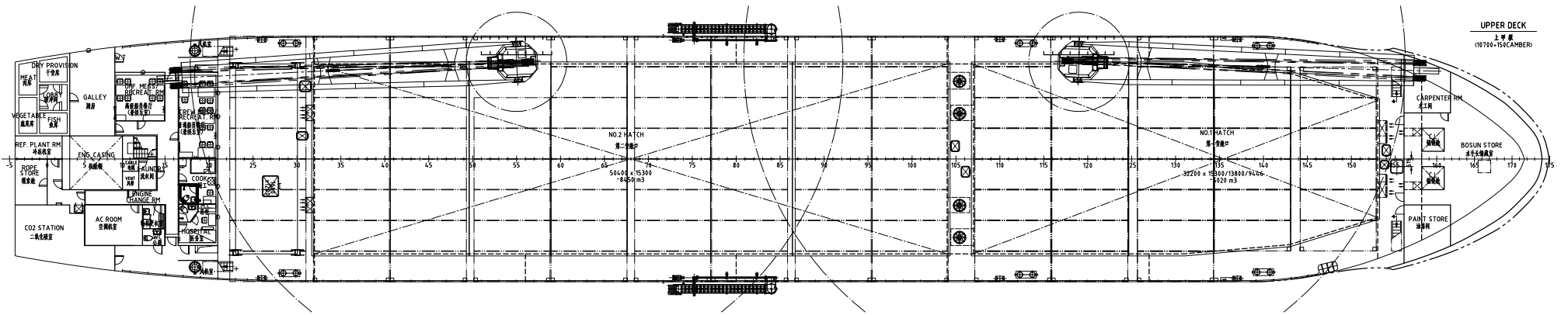
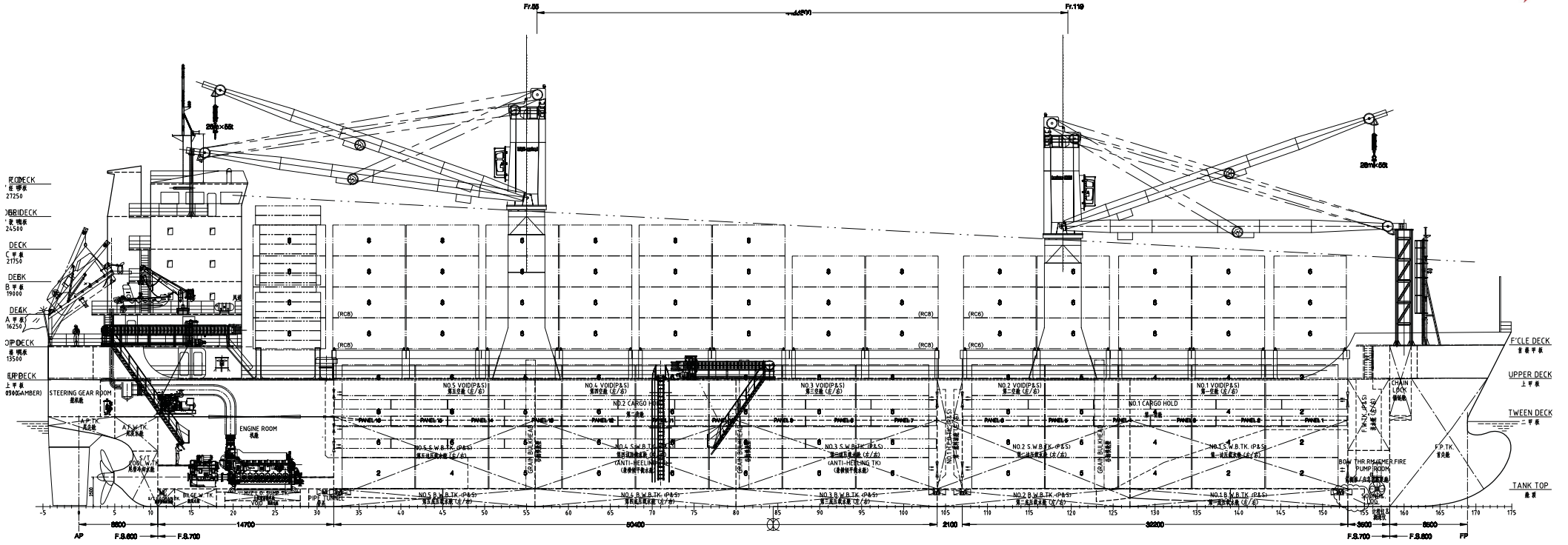
# PACIFIC VENTURE

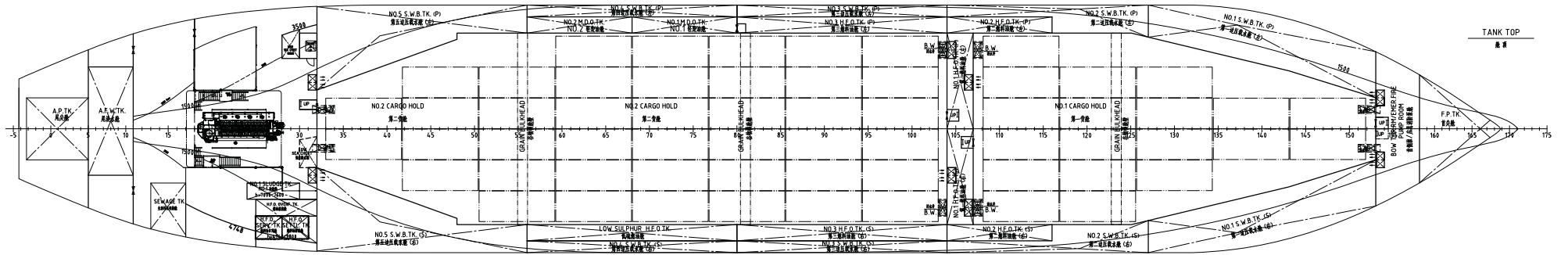
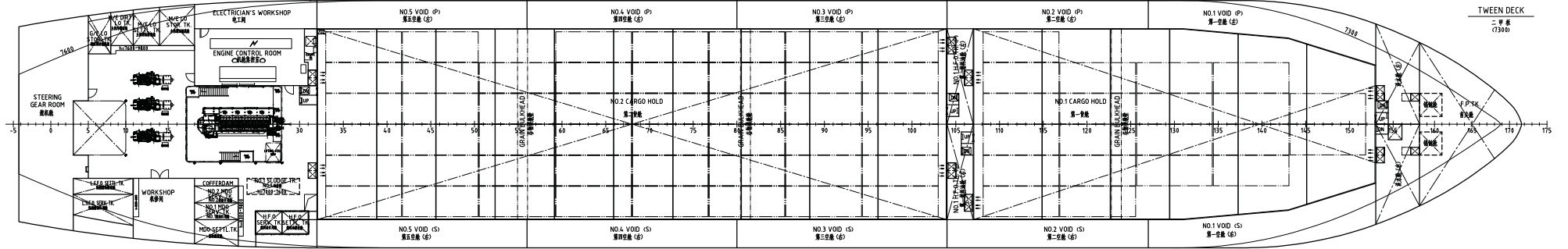
## Tween deck



## Lower hold







# PACIFIC VENTURE

## HATCH COVER NO. 1 SEQUENCE



## HATCH COVER NO. 2 SEQUENCE

