



Ship's particulars



M/V 'RUDOLF'

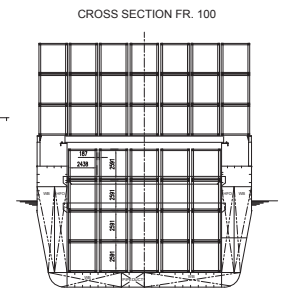
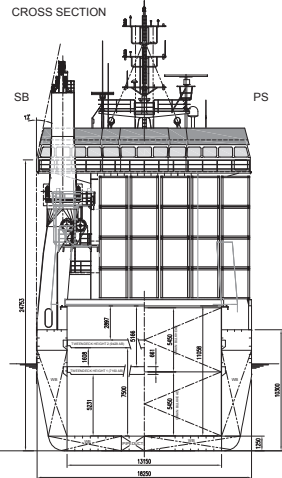
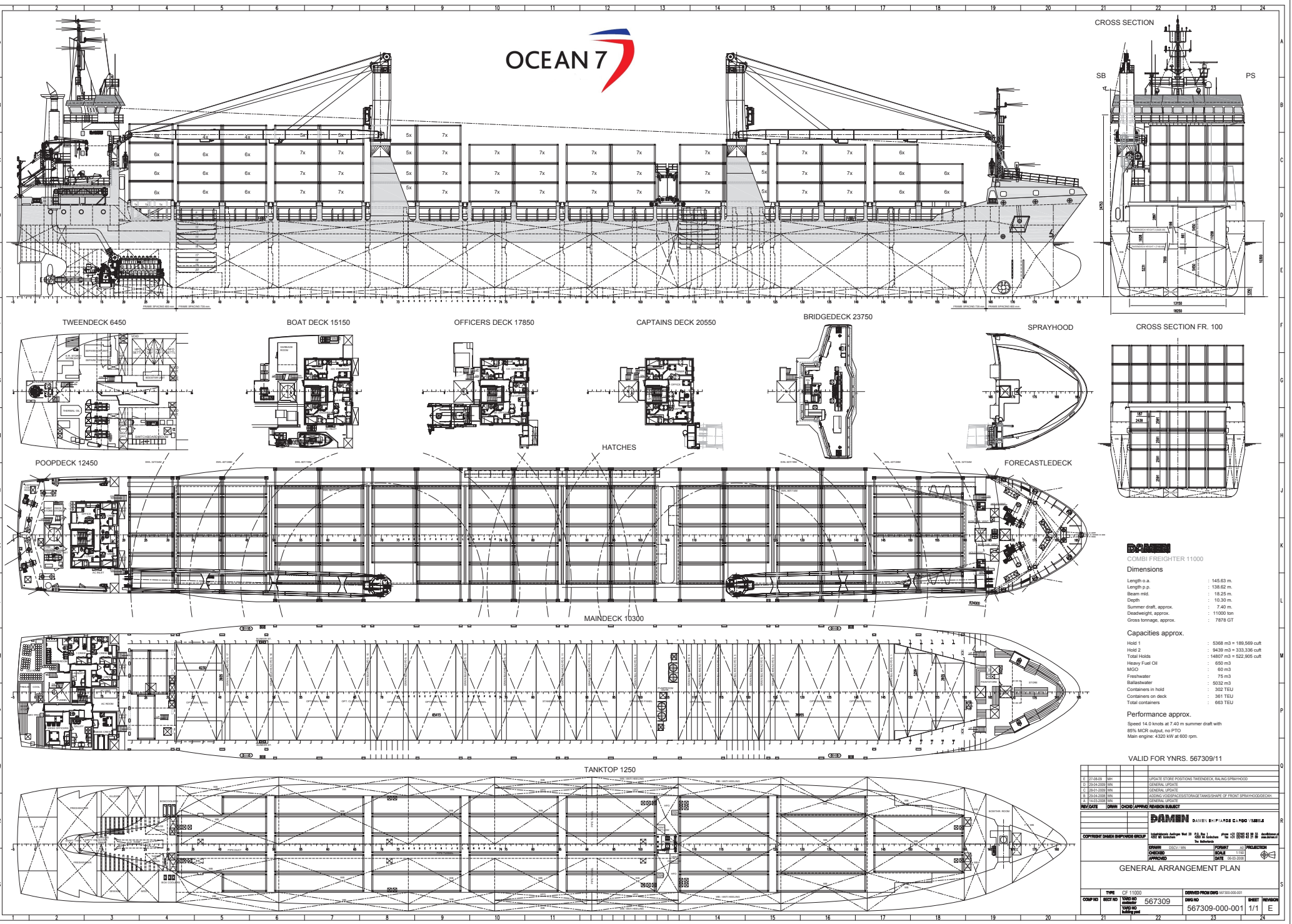
Valid as of 21 Feb 2025

Registration	
Call sign	V2EY4
IMO number	9535591
Port of registry	St. John's
Flag state	Antigua & Barbuda
Shipyard	Damen Shipyard
Year/Place of delivery	2010/Yichang
Class	Bureau Veritas
Class notation	I <input checked="" type="checkbox"/> HULL <input checked="" type="checkbox"/> MACH, General cargo ship – equip. for carr. of contr. Unrestricted nav. heavycargo 196,1 kN/m ² <input checked="" type="checkbox"/> AUT_UMS, MON-SHAFT Ice class IA
P&I Club	SKULD
Tonnage	
DWAT	10.872 mt
DWCC	Abt. 9.900 mt
Gross tonnage	8.059
Net tonnage	3.909
Dimensions	
Length over all	145,56 m
Length between p.p.	138,62 m
Breadth over all	18,25 m
Breadth moulded	18,25 m
Summer draught	7,40 m
Depth moulded	10,30 m
Height keel to top mast	36,40 m
Hold/hatch sizes	
Number of holds/hatches	2/2
#1 Hold capacity	Abt. 5.368 m ³ /189.565 ft ³
#2 Hold capacity	Abt. 9.439 m ³ /333.335 ft ³
#1 hold	38,95 x 13,50 m (narrw fwd) 10,51 m
#2 hold	65,42 x 13,15 m (narrw aft) 7,87 m
Hold height	11,05 m
Tween deck:	
1 st pos. TT -> TD -> HC	7,50/2,90 m
2 nd pos. TT -> TD -> HC	5,23/5,16 m
Hold floor surface	1.304 m ²
Tween deck surface	1.339 m ²
Hatch cover surface	1.413 m ²
Container capacity	
Hold capacity	302 TEU
Deck capacity	361 TEU (60 reefer)
Total	663 TEU
Stack weight TEU/FEU	Tanktop: 100/120 mt Hatch Covers: 28/52 mt
IMDG class 1.1-1.6	In hold and on deck
Class 1.4S	In hold and on deck

Deck loads	
Tanktop	18,00 mt/m ²
Tween deck pontoons	3,50 mt/m ²
Hatch covers	1,75 mt/m ²
Hatch covers/Tween deck	
Type of hatch covers	6 + 10 pontoons moveable own gantry crane
Tween deck pontoons	8 + 12 pontoons
Propulsion/Maneuvering	
Main Engine	4.320 kW
Bow thruster	650 kW
Propeller	BalancedType
Rudder	CPP
Service speed	13,8 kn
Bunkers/Ballast capacity	
Heavy fuel oil	650 m ³
Marine gas oil	60 m ³
Fresh water	76 m ³
Ballast water	5.032 m ³
Cargo gear	
Cranes on stb. side	2 x Mac Gregor x 80 mt SWL
Load/Outreach	80 mt/6,0-14,0 m 60 mt/6,0-19,0 m 40 mt/2,5-26,0 m 32 mt/2,5-34,0m
Tandem load	160 mt SWL
Lifting beam on board	One x 26,0 m x WLL 140 mt
Bone traverse on board	Two x 6,2 m x WLL 80 mt

All details are believed to be correct but without guarantee/HWS

Phone: +45 70 70 13 11
E-mail: europe@ocean7projects.com
Web: <https://ocean7projects.com>



DAMEN
COMBI FREIGHTER 11000

Dimensions

Length o.a.	: 145.63 m.
Length p.p.	: 138.62 m.
Beam mid.	: 18.25 m.
Depth	: 10.30 m.
Summer draft, approx.	: 7.40 m.
Deadweight, approx.	: 11000 ton
Gross tonnage, approx.	: 7878 GT

Capacities approx.

Hold 1	: 5368 m³ = 189,569 cuft
Hold 2	: 8428 m³ = 333,336 cuft
Total Holds	: 14897 m³ = 522,905 cuft
Heavy Fuel Oil	: 650 m³
MCO	: 60 m³
Freshwater	: 75 m³
Ballastwater	: 5032 m³
Containers in hold	: 302 TEU
Containers on deck	: 361 TEU
Total containers	: 663 TEU

Performance approx.

Speed 14.0 knots at 7.40 m summer draft with 85% MCR without no PFD
Main engine: 4320 kW at 600 rpm.

VALID FOR YNRS. 567309/11

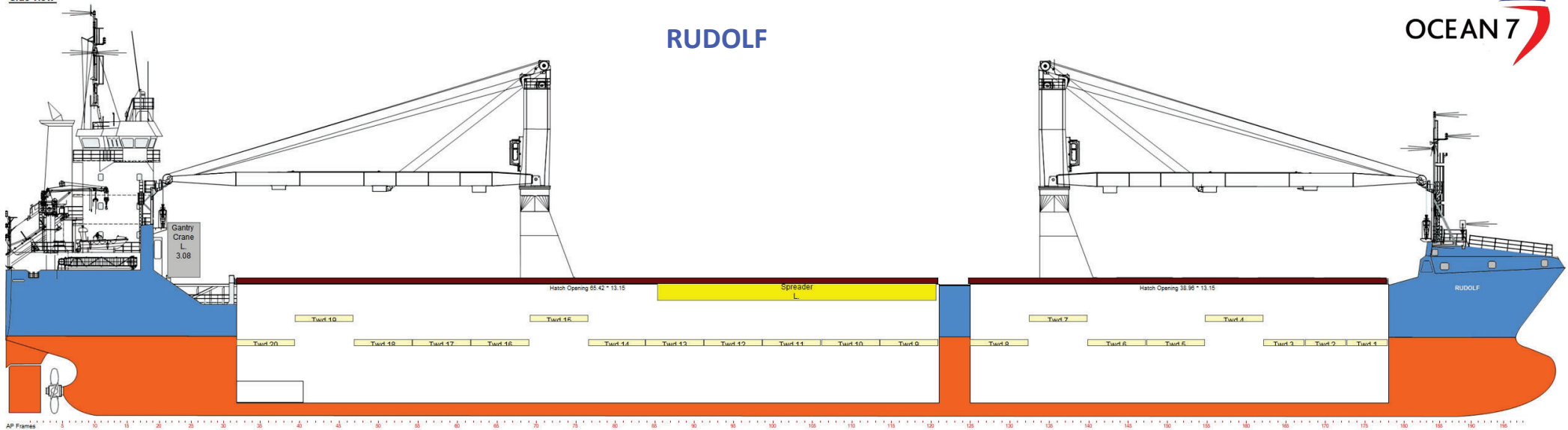
REV	DATE	CHG	APPV	REVISION SUBJECT
1	22.06.00	001		UPDATE STORE POSITIONS TWEENDECK MAINDECK SPRAYHOOD
2	23.04.2009	001		GENERAL UPDATE
3	24.07.2009	001		GENERAL UPDATE
4	23.04.2009	001		ADDING COORDINATES/STORAGE TANKSHAPE OF FRONT SPRAYHOOD/COCKPIT
5	18.03.2009	001		GENERAL UPDATE
6	18.03.2009	001		GENERAL UPDATE
7	18.03.2009	001		GENERAL UPDATE
8	18.03.2009	001		GENERAL UPDATE
9	18.03.2009	001		GENERAL UPDATE
10	18.03.2009	001		GENERAL UPDATE
11	18.03.2009	001		GENERAL UPDATE
12	18.03.2009	001		GENERAL UPDATE
13	18.03.2009	001		GENERAL UPDATE
14	18.03.2009	001		GENERAL UPDATE
15	18.03.2009	001		GENERAL UPDATE
16	18.03.2009	001		GENERAL UPDATE
17	18.03.2009	001		GENERAL UPDATE
18	18.03.2009	001		GENERAL UPDATE
19	18.03.2009	001		GENERAL UPDATE
20	18.03.2009	001		GENERAL UPDATE
21	18.03.2009	001		GENERAL UPDATE
22	18.03.2009	001		GENERAL UPDATE
23	18.03.2009	001		GENERAL UPDATE
24	18.03.2009	001		GENERAL UPDATE

DAMEN DAMEN BY PIARDI CLARCO VERBALE
Via Salaria 115 - 00198 Roma - Italy
Tel. +39 06 512941 - Fax +39 06 51294200
E-mail: damen@damen.com

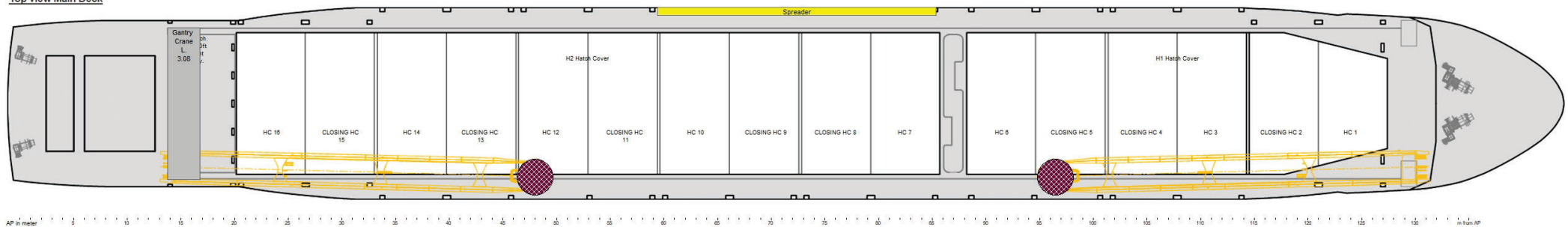
COMPANY DAMEN SHIPYARD GROUP
DAMEN SHIPYARD GROUP
Via Salaria 115 - 00198 Roma - Italy
Tel. +39 06 512941 - Fax +39 06 51294200
E-mail: damen@damen.com

GENERAL ARRANGEMENT PLAN

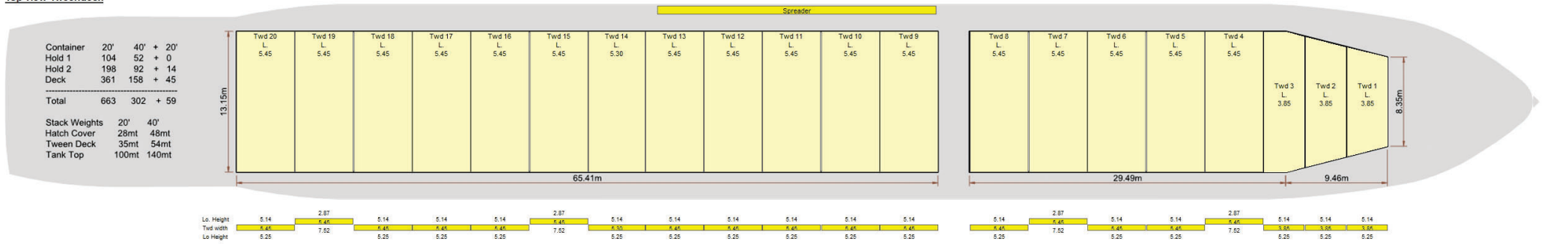
COMP ID	TYPE	DERIVED FROM DWG	DATE	SHEET NUMBER
567309	CF 11000	567309-000-001	1/1	E



Top view Main Deck



Top view Tweendeck



Top view Tank Top

