



Ship's particulars



M/V 'RUDOLF'

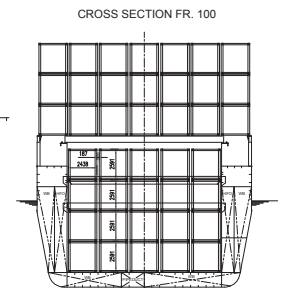
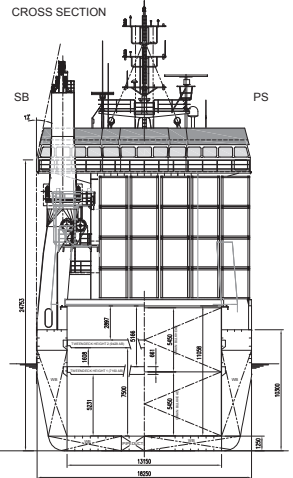
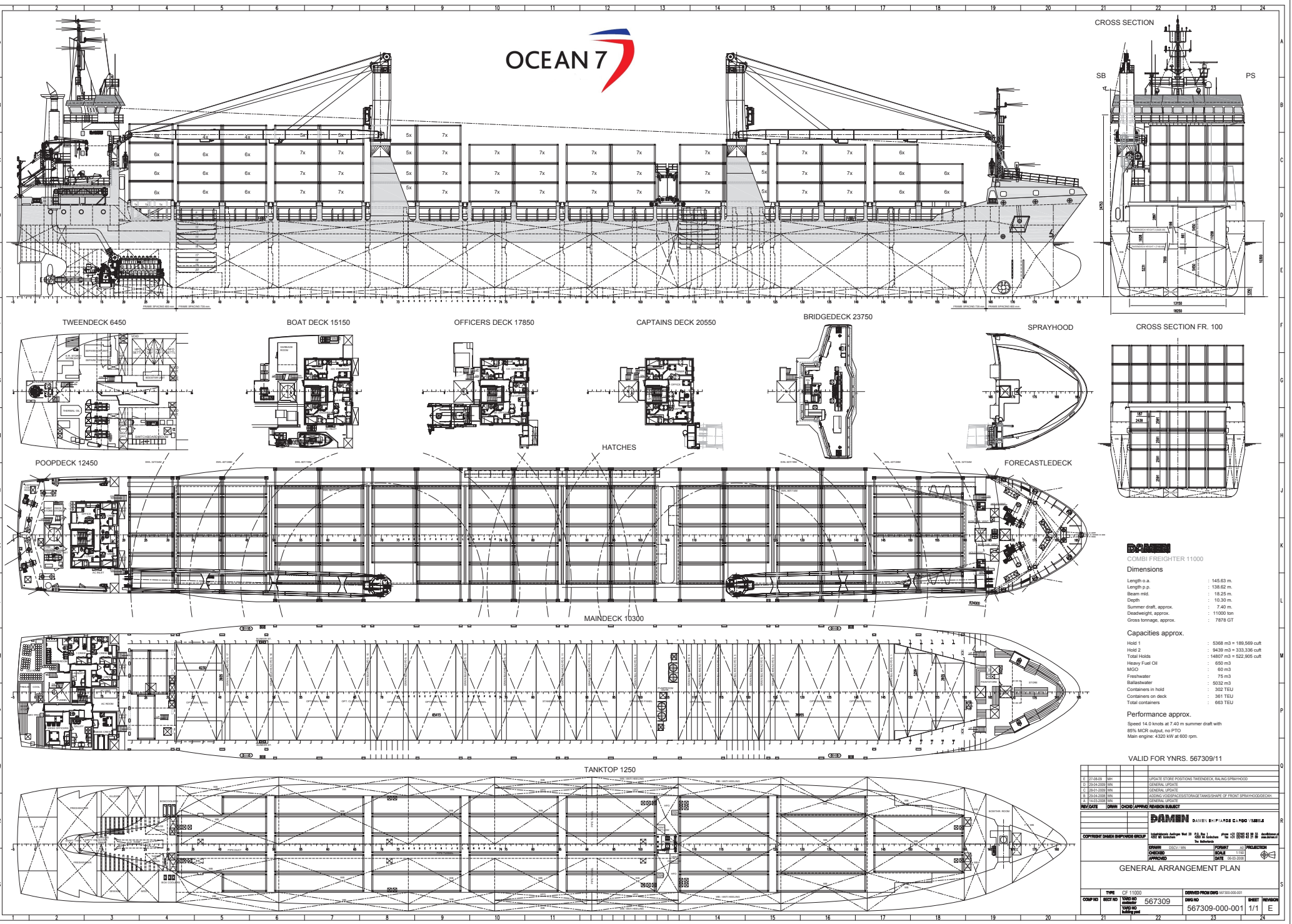
Valid as of 24 Mar 2025

Registration	
Call sign	V2EY4
IMO number	9535591
Port of registry	St. John's
Flag state	Antigua & Barbuda
Shipyard	Damen Shipyard
Year/Place of delivery	2010/Yichang
Class	Bureau Veritas
Class notation	I <input checked="" type="checkbox"/> HULL <input checked="" type="checkbox"/> MACH, General cargo ship – equip. for carr. of contr. Unrestricted nav. heavycargo 196,1 kN/m ² <input checked="" type="checkbox"/> AUT_UMS, MON-SHAFT Ice class IA
P&I Club	SKULD
Tonnage	
DWAT	10.872 mt
DWCC	Abt. 9.900 mt
Gross tonnage	8.059
Net tonnage	3.909
Dimensions	
Length over all	145,56 m
Length between p.p.	138,62 m
Breadth over all	18,25 m
Breadth moulded	18,25 m
Summer draught	7,40 m
Depth moulded	10,30 m
Height keel to top mast	36,40 m
Hold/hatch sizes	
Number of holds/hatches	2/2
#1 Hold capacity	Abt. 5.368 m ³ /189.565 ft ³
#2 Hold capacity	Abt. 9.439 m ³ /333.335 ft ³
#1 hold	38,95 x 13,50 m (narrw fwd) 10,51 m
#2 hold	65,42 x 13,15 m (narrw aft) 7,87 m
Hold height	11,05 m
Tween deck:	
1 st pos. TT -> TD -> HC	7,50/2,90 m
2 nd pos. TT -> TD -> HC	5,23/5,16 m
Hold floor surface	1.304 m ²
Tween deck surface	1.339 m ²
Hatch cover surface	1.413 m ²
Container capacity	
Hold capacity	302 TEU
Deck capacity	361 TEU (60 reefer)
Total	663 TEU
Stack weight TEU/FEU	Tanktop: 100/120 mt Hatch Covers: 28/52 mt
IMDG class 1.1-1.6	In hold and on deck
Class 1.4S	In hold and on deck

Deck loads	
Tanktop	18,00 mt/m ²
Tween deck pontoons	3,50 mt/m ²
Hatch covers	1,75 mt/m ²
Hatch covers/Tween deck	
Type of hatch covers	6 + 10 pontoons moveable own gantry crane
Tween deck pontoons	8 + 12 pontoons
Propulsion/Maneuvering	
Main Engine	4.320 kW
Bow thruster	650 kW
Propeller	Semi-balanced type
Rudder	CPP
Service speed	13,8 kn
Bunkers/Ballast capacity	
Heavy fuel oil	526 m ³
Marine gas oil	186 m ³
Fresh water	76 m ³
Ballast water	5.032 m ³
Cargo gear	
Cranes on stb. side	2 x Mac Gregor x 80 mt SWL
Load/Outreach	80 mt/6,0-14,0 m 60 mt/6,0-19,0 m 40 mt/2,5-26,0 m 32 mt/2,5-34,0m
Tandem load	160 mt SWL
Lifting beam on board	One x 26,0 m x WLL 140 mt
Bone traverse on board	Two x 6,2 m x WLL 80 mt

All details are believed to be correct but without guarantee/HWS

Phone: +45 70 70 13 11
E-mail: europe@ocean7projects.com
Web: <https://ocean7projects.com>



DAMEN
COMBI FREIGHTER 11000

Dimensions

Length o.a.	145.63 m
Length p.p.	138.62 m
Beam mid.	18.25 m
Depth	10.30 m
Summer draft, approx.	7.40 m
Deadweight, approx.	11000 ton
Gross tonnage, approx.	7878 GT

Capacities approx.

Hold 1	5368 m³ = 189,569 cuft
Hold 2	8428 m³ = 333,336 cuft
Total Holds	14897 m³ = 522,905 cuft
Heavy Fuel Oil	650 m³
MCO	60 m³
Freshwater	75 m³
Ballastwater	5032 m³
Containers in hold	302 TEU
Containers on deck	361 TEU
Total containers	663 TEU

Performance approx.

Speed 14.0 knots at 7.40 m summer draft with 85% MCR without no PFD
Main engine: 4320 kW at 600 rpm.

VALID FOR YNRS. 567309/11

DATE	22.06.2011	UPDATE STORE POSITIONS TWEENDECK, MAINDECK, SPRAYHOOD
DATE	23.04.2009	GENERAL UPDATE
DATE	23.03.2009	GENERAL UPDATE
DATE	18.04.2008	ADDITION COORDINATE STORAGE TANKS SHAPE OF FRONT SPRAYHOOD/CORRIDOR
DATE	18.03.2008	GENERAL UPDATE

REV/CATE: 00001 CHG/APP/REV/NOB/SUBJECT

DAMEN DAMEN BY PIARDI CLARCO VERBALE

CONTRACT: DAMEN SHIPYARD GROUP

DESIGN: 00001/001

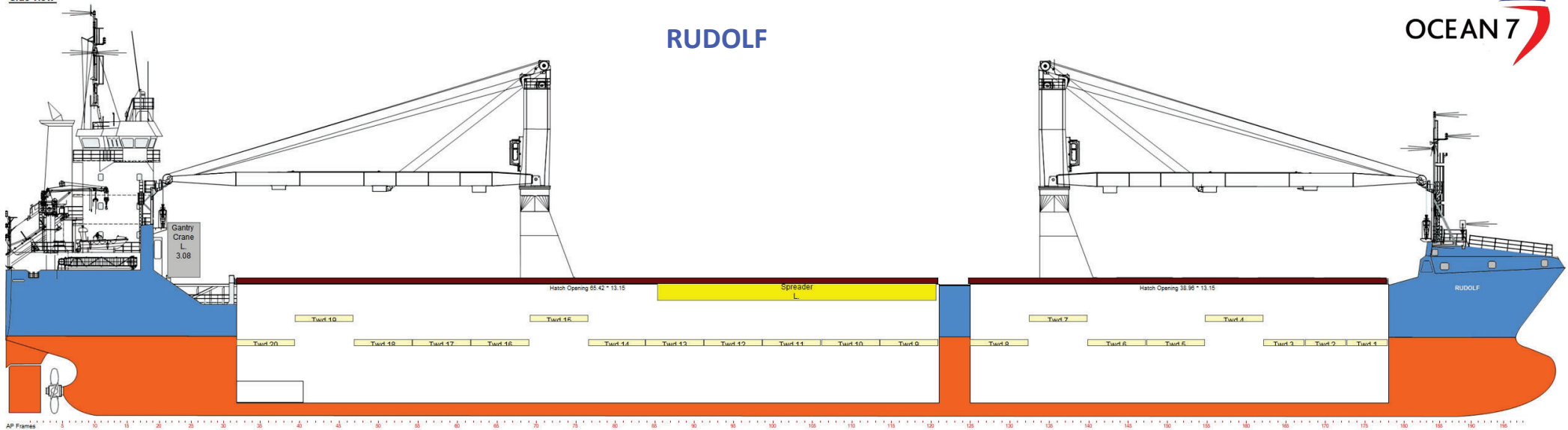
PROJECT: 567309

SCALE: 1:100

DATE: 22.06.2011

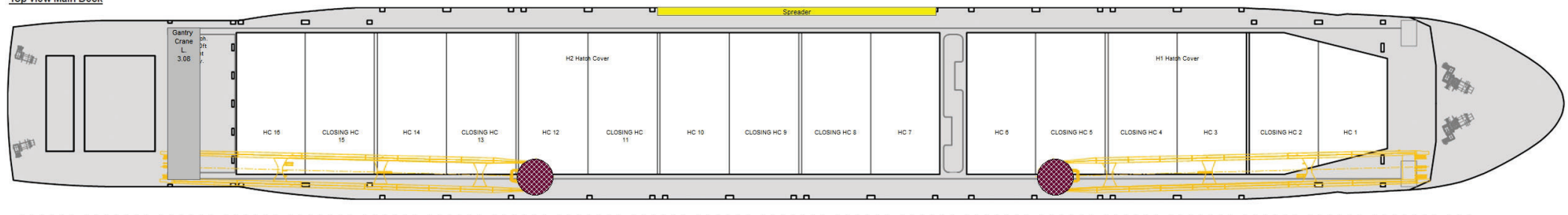
GENERAL ARRANGEMENT PLAN

COMP/ID	TYPE	DERIVED FROM	DATE	SHEET NUMBER
567309	CF 11000	DWG 567309-000-001	1/1	E



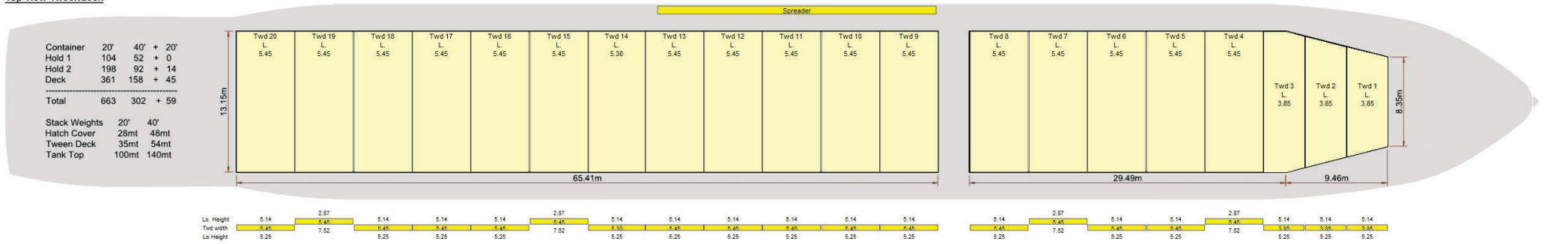
AP Frames

Top view Main Deck



AP in meter

Top view Tweeneck



Top view Tank Top

