



M/V 'TALIA H'

Valid as of 18 Apr 2021

Registration

Call sign	8PAM9
IMO number	9359947
Port of registry	Bridgetown
Flag state	Barbados
Shipyard	Tianjin Xingang, S343-2
Year/Place of delivery	2008/China
Class	Lloyd's Register
Class notation	✕100A1, Strengthened for heavy cargoes, container Cargoes in all holds and deck. ✕LI, ILMC
P&I Club	Skuld

Tonnage

DWAT	12.583 mt
DWCC	Abt.11.300 mt
Gross/Net tonnage	9.938/4.265

Dimensions

Length over all	139,95 m
Length between p.p.	133,77m
Breadth over all/moulded	21,51 m
Summer draught	8,40 m
Depth moulded	11,65 m
Height keel to top mast	40,00 m

Hold/hatch sizes

Number of holds/hatches	3/3
Hold capacity (incl. T/D in)	Abt. 16.113 m ³ /569.025 ft ³
Hold surface #1/#2/#3	Abt .221/694/456 m ²

#1 hatch coaming/opening (lxb)	20,30 x 7,00 fwd/10,80 aft
#1 Tween deck	20,30 x 5,42 fwd/16,50 aft
#1 tank top	20,30 x 5,42 fwd/16,35 aft
#2 hatch coaming/opening (lxb)	39,20 m x 17,90 m
#2 Tween deck	40,60 m x 17,90 m
#2 tank top	40,60 m x 17,90 m fwd 16,35 m over last 5,6 m
#3 hatch coaming/opening (lxb)	25,90 m x 17,90 m
#3 Tween deck	26,60 m x 17,90 m
#3 tank top	26,60 m x 17,90 m aft 12,73 m over last 11,35 m

Height hold #1, above/below TD	8,60 m, 4,30 m/3,60 m
Height hold #2, above/below TD	11,80 m, 5,40/5,40 m
or	11,80 m, 4,10/6,70 m
Height hold #3, above/below TD	11,80 m, 5,40/5,40 m

Container capacity

Hold capacity	292 TEU (38 reefer)
Deck capacity	414 TEU (100 reefer)
Total	706 TEU
Stack weight TEU/FEU	Tanktop: 70/75 mt Hatchcovers: 60/90 mt

TEU slots for IMO class 1 334 on deck/32 in hold #1

Deck loads

Tanktop	18,0 mt/m ²
T/D # 1	3,0 mt/m ²
T/D #2 and #3	3,5 mt/m ²
Hatch covers	3,5 mt/m ²

Hatch covers

Hydraulic folding + lift-away	
#1	2 aft + 1
#2	2 aft and 2 fwd + 2
#3	2 fwd + 2
Tween deck #1/#2/#3	3/6/4 pontoons

Propulsion/Maneuvering

Main Engine	7074 kW
Bow thruster	550 kW
Stern thruster	-
Propeller	5 blades fixed pitch
Rudder	Balanced rudder
Service speed	Up to 15,0 kn

Bunkers/Ballast capacity

Heavy fuel oil	1091 m ³
Marine diesel oil	134 m ³
Lubricating oil	101 m ³
Fresh water	180 m ³
Ballast water	4920 m ³

Cargo gear

Cranes on portside #1-#2	2 x MacGregor x 80 mt SWL
#3	1 x MacGregor x 45 mt SWL
Load/Outreach #1 - #2	80/60/45/40 mt at 20, 24, 30, 33 m
#3	45/40 mt at 28, 33 m
Tandem load	160 mt SWL
Lifting beam on board	1 team beam, 146 mt WLL (16,1 mtr long)
Spreader beams on board	1 x 20' and 1 x 40' frame

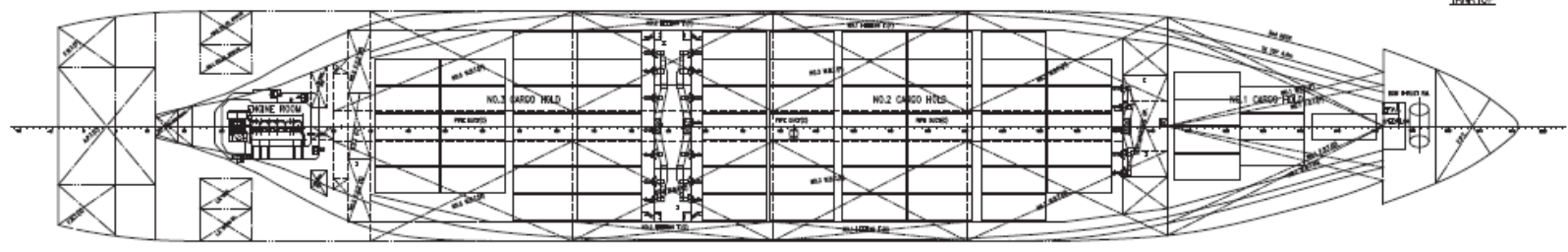
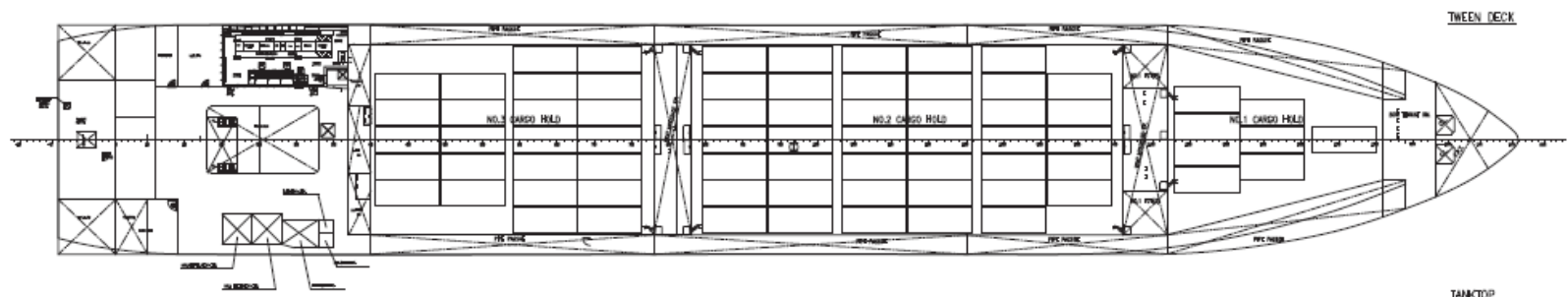
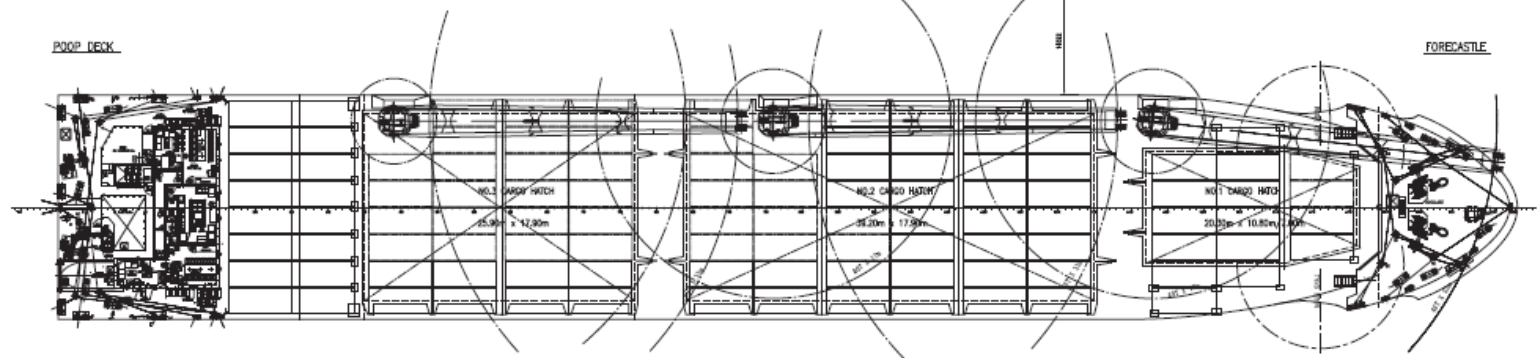
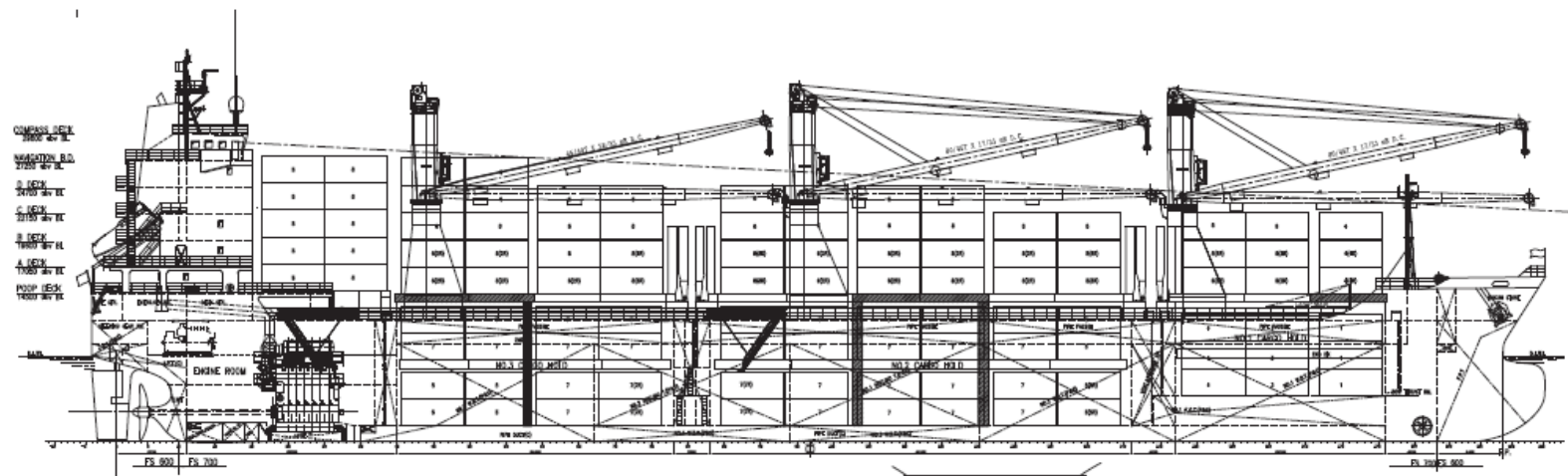
Lifting heights

Crane #1 and #2:	
At 20/24 m outreach	22.8/18.8 m
At 30/33 m outreach	12.8/9.8 m
Crane #3:	
At 28/33 m outreach	14.9/9.9 m

All details are believed to be correct but without guarantee/HWS

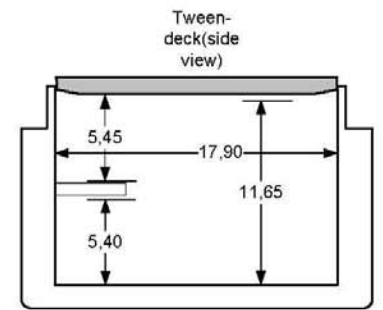
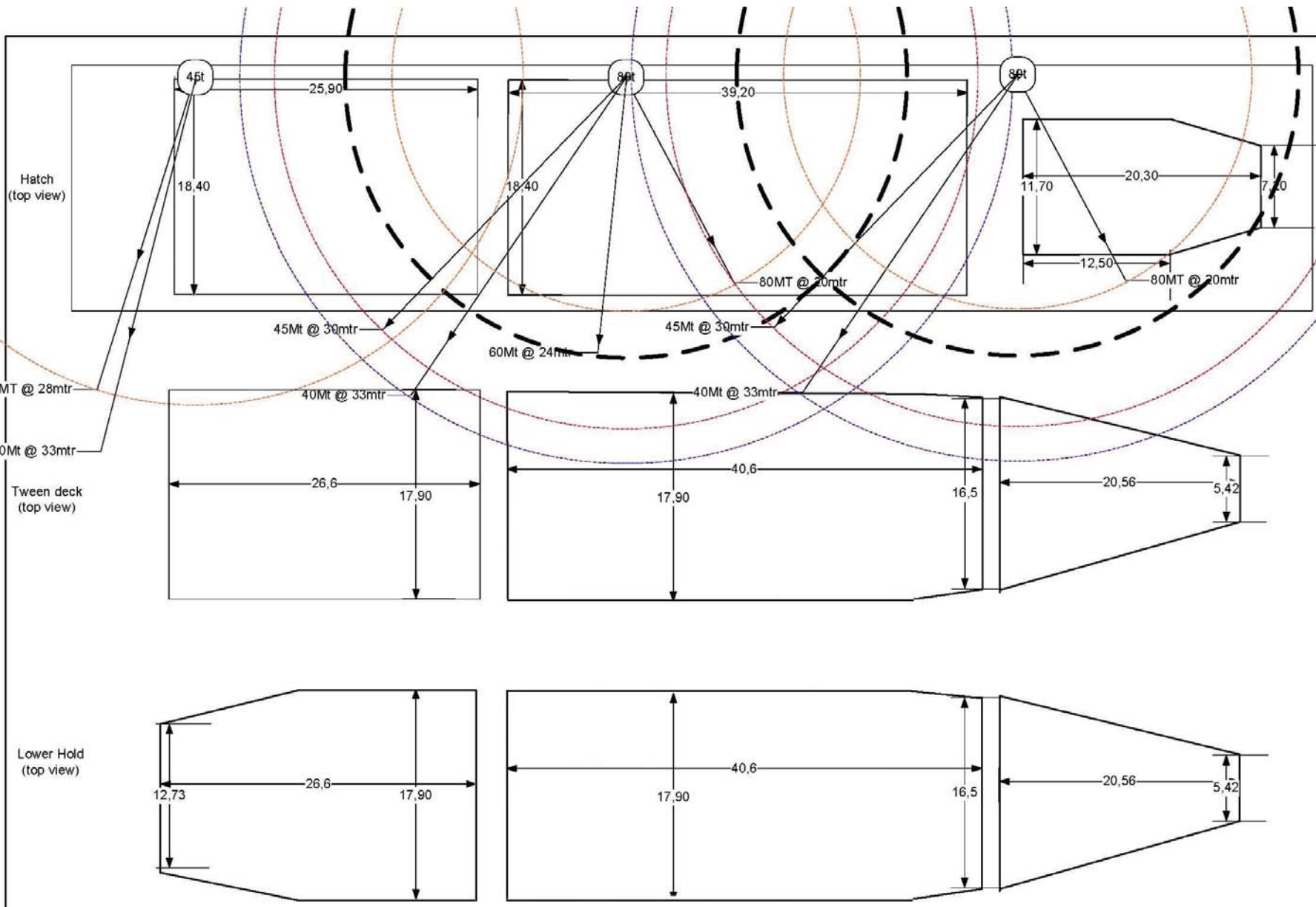
OCEAN7 Projects ApS
Jyllandsgade 19A
DK-7000 Fredericia
Denmark

Phone: +45 7070 1311
E-mail: denmark@ocean7projects.com





Particulars:
 LOA : 139,952 mts
 Breadth: 21,51 mts
 Draft : 8.40 mts
 DWT : 12.583 MT
 Bale : 15.260 m3
 CR : 2x80MT+1x45MT
 Containers: 706 TEU



VESSEL					CLIENT				
SCLAnta		PLAN TYPE						REV	
DRAWN BY	CHECKED BY	DATE	SCALE	DRAWING NO.					
			1:400						

