



## Ship's particulars



### M/V 'TITUS'

Valid as of 09 Jul 2024

<b>Registration</b>	
Call sign	ZDHI5
IMO number	9195470
Port of registry	Gibraltar
Flag state	Gibraltar
Shipyard	Rousse Shipyard
Year/Place of delivery	2006/Bulgaria
Class	DNV
Class notation	✘100 A5 E3 Multi-p. D/C-ship Equipped for contr. DBC Solas-II-2, Reg.19 G Strengthened f. heavy cargo ✘ MC E3 AUT
<b>P&amp;I Club</b>	UK P&I Club
<b>Tonnage</b>	
DWAT	4.325 mt
DWCC	Abt. 3.900 mt
Gross tonnage	3.198
Net tonnage	1.725
<b>Dimensions</b>	
Length over all	98,90 m
Length between p.p.	92,75 m
Breadth over all	13,80 m
Breadth moulded	13,80 m
Summer draught	5,74 m
Depth moulded	7,41 m
Height keel to top mast	30,20 m
<b>Hold/hatch sizes</b>	
Number of holds/hatches	1/1 (w/ 1 strong beam)
Hold capacity	About 6.374 m <sup>3</sup> /225.095 ft <sup>3</sup>
Hold dim. fwd of strong beam	38,05 x 11,20 m (narrow fwd to 5,00m)
Hold dim. aft of strong beam	31,60 x 11,20 m (narrow aft to 5,60 m)
Tween deck dim. (square)	57,15 x 11,20 m
Hatch cover dimensions	70,33 x 11,47 m
Hold height	8,44 m
Height below strong beam	5,42 (center)/3,50 (side) m
Height above/below TD	3,98/3,96 m
Floor below deck	1.490 m <sup>2</sup>
Deck floor surface	790 m <sup>2</sup>
<b>Container capacity</b>	
Hold capacity	120 TEU
Deck capacity	154 TEU (20 reefer)
Total	274 TEU*
	*10 TEU not reachable by own crane
Stack weight TEU/FEU	Tanktop: 72/90,5 mt Hatchcovers: 25/32 mt
TEU slots for IMO class 1.1-1.6	On deck + bay 01-07 below
IMO class 1.4S	All deck and hold

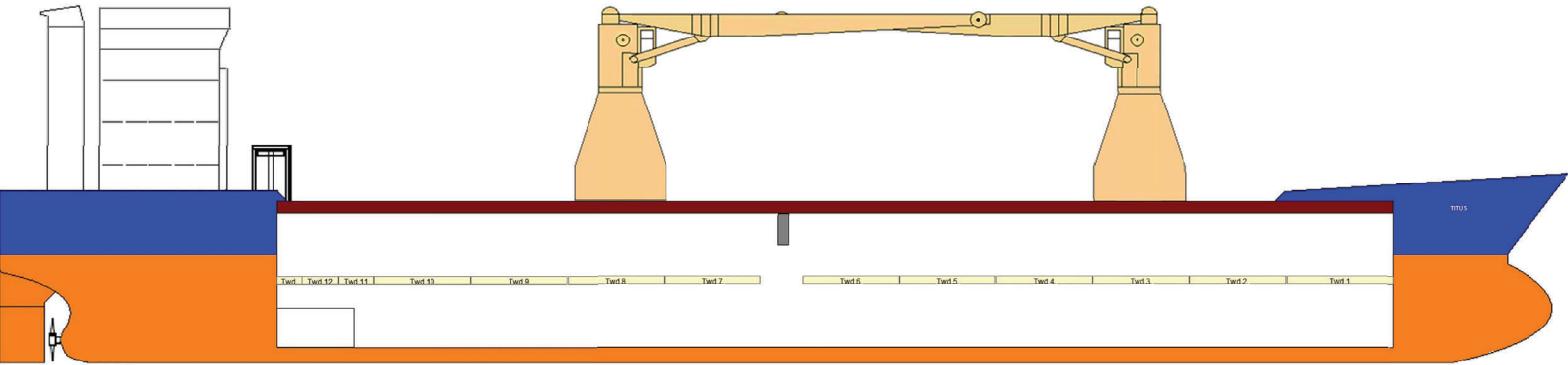
<b>Deck loads</b>	
Tanktop	15,0 mt/m <sup>2</sup>
Tween deck pontoons	2,50 mt/m <sup>2</sup>
Hatch covers	1,65 mt/m <sup>2</sup>
<b>Hatch covers/Tween deck</b>	
Type of hatch covers	All moveable by own gantry: 11 pontoons (Sequence open hatch cover: 2-4-6-8-10 and 1-3-5-7-9-11)
Tween deck pontoons	11 pontoons (4 can be used for erecting 2 grain bulkheads)
<b>Propulsion/Maneuvering</b>	
Main Engine	2.880 kW
Bow thruster	Yes
Propeller	CPP
Rudder	Balanced
Service speed	12,0 kn
<b>Bunkers/Ballast capacity</b>	
Heavy fuel oil	275 m <sup>3</sup>
Marine gas oil	65 m <sup>3</sup>
Fresh water	42 m <sup>3</sup>
Ballast water	1.865 m <sup>3</sup>
<b>Cargo gear</b>	
Cranes on port side	2 x NMF x 60 mt SWL
Load/Outreach	60 mt/2,4-14,0 m 35 mt/2,4-21,5 m
Tandem load	120 mt SWL
Lifting beam on board	1 x 11,00 m WLL 125 mt 2 x 6,65 m WLL 60 mt
<b>Lifting heights</b>	
21,5 m outreach	17,0 m
14,0 m outreach	25,5 m
2,5 m outreach	31,0 m

*All details are believed to be correct but without guarantee/NN*

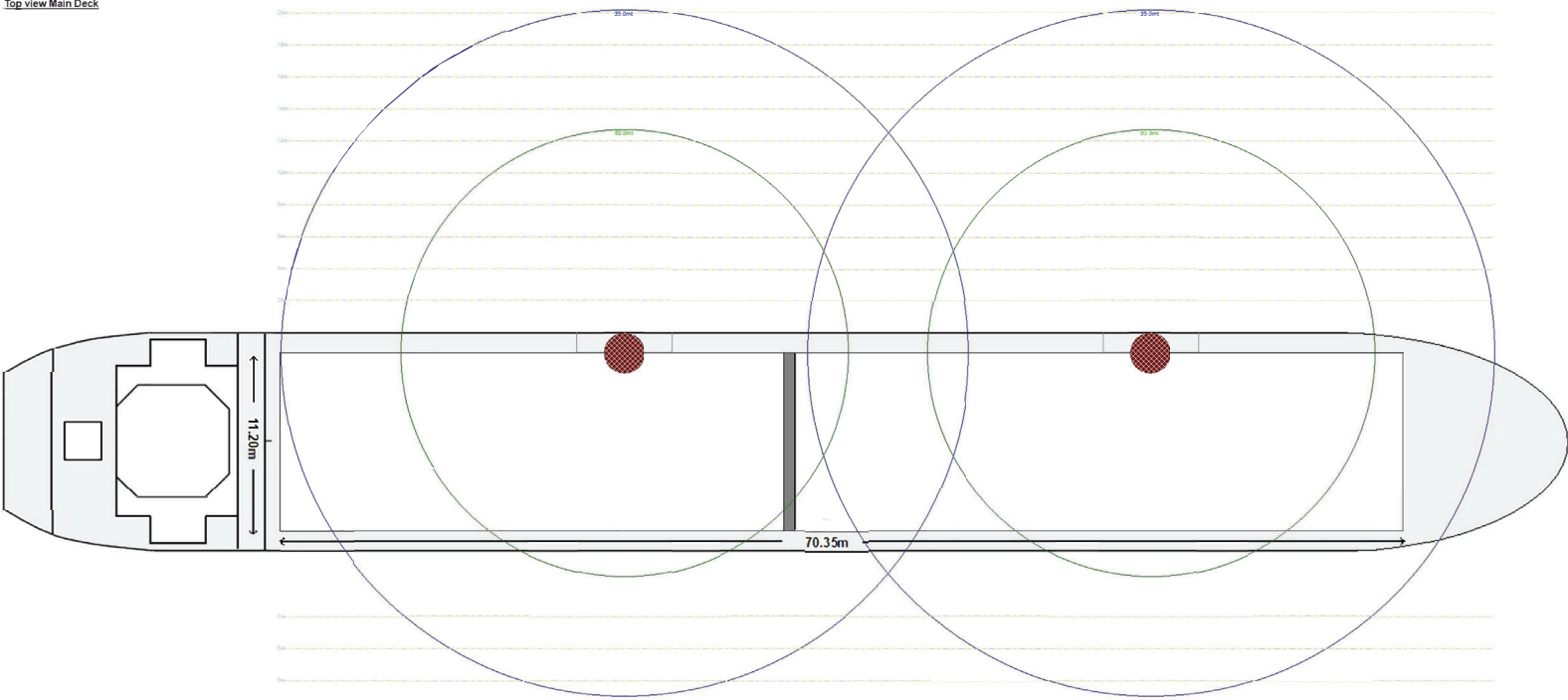
Phone: +45 70 70 13 11  
E-mail: [europa@ocean7projects.com](mailto:europa@ocean7projects.com)  
Web: <https://ocean7projects.com>

# TITUS

Side view



Top view Main Deck



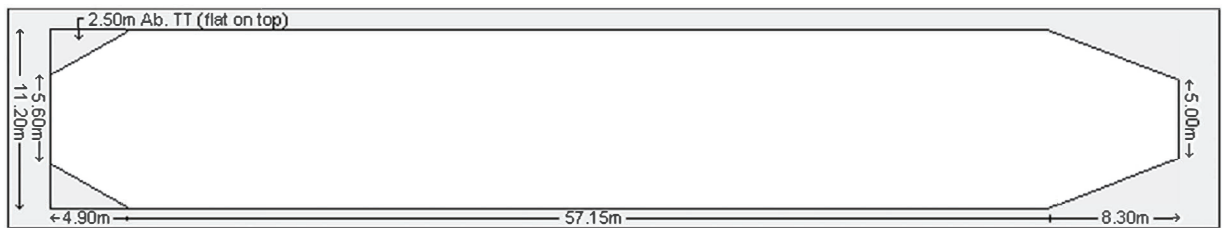
Top view Tweendeck

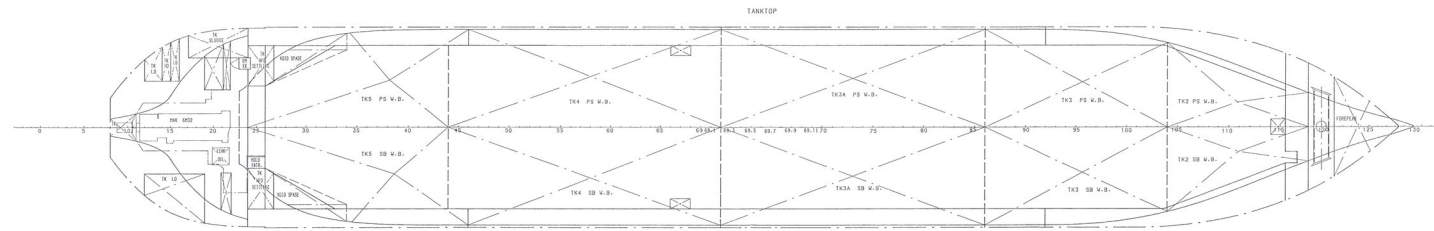
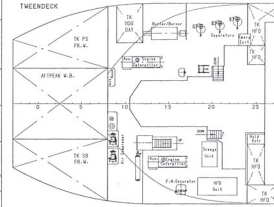
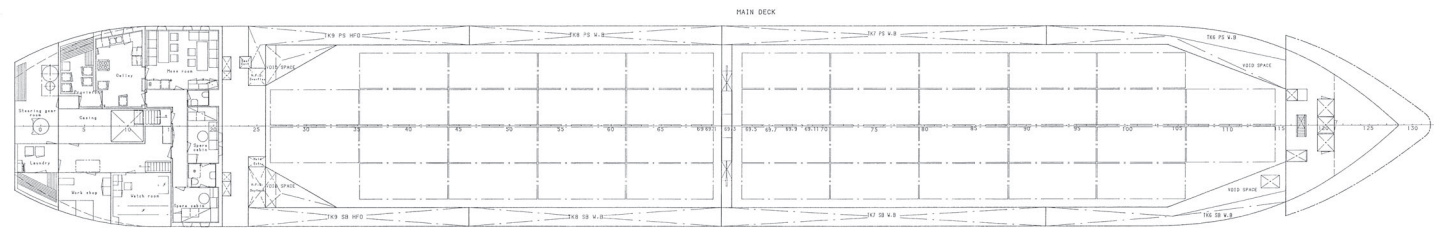
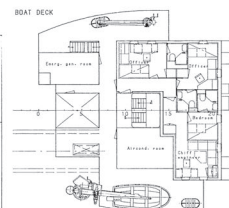
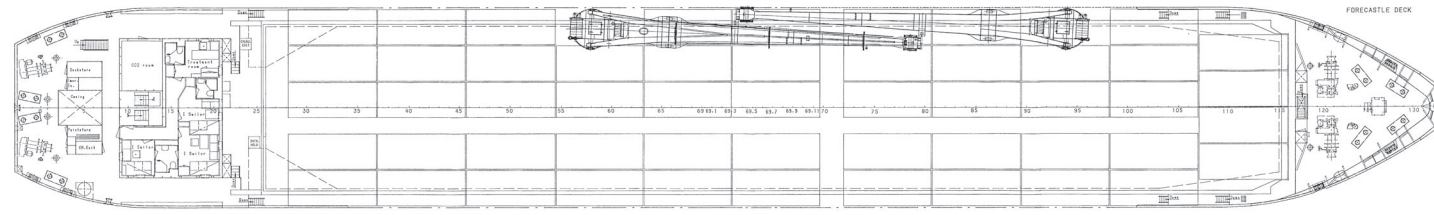
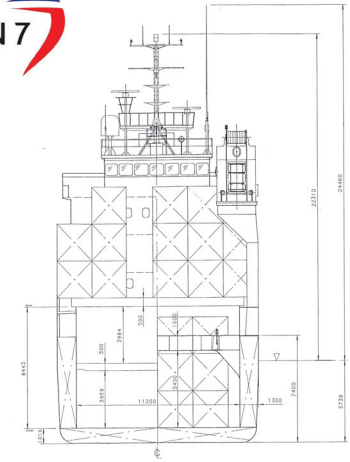
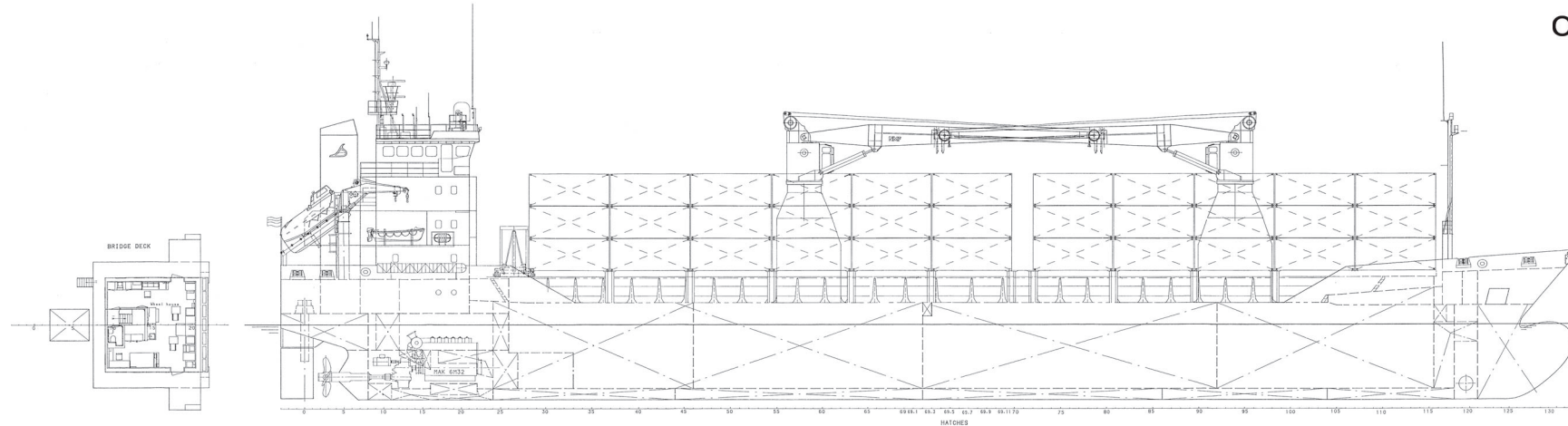


Top view Tank Top

Deck Strength:  
 TT 15.00 mt / m<sup>2</sup>  
 Twid 2.50 mt / m<sup>2</sup>  
 HC 1.65 mt / m<sup>2</sup>

Cranes  
 60 mt / 14.0m  
 35 mt / 21.5m





PRINCIPAL PARTICULARS

LENGTH O.A.	98.80 M
LENGTH B.P.P.	92.50 M
BREADTH B.P.P.	13.30 M
DEPTH	7.40 M
DRAUGHT FRESHWATER	5.24 M
DISPLACEMENT	4310 TON
TONNAGE	3198 GT
HOLD CAPACITY	225100 COB. P.T.
SPEED	13.0 KNOTS
MAX. ENGINE	2880 KW
CONTAINER CAP. (TET. STACKING)	256 TET.
FUEL OIL CAP. (M.F.S.)	274 M <sup>3</sup>
FRESHWATER	42 M <sup>3</sup>
WATERBALLAST	1875 M <sup>3</sup>
CLASS. CL. & IONS	ICE E3.0 ■ HD AUT E3
TYPE OF CARGO HOLD	[1] [2] [3] [7]

NO CARGO (NO HULL)

Particulars	2022
YTD No.	436

REGISTERED DRY CARGO MOTOR SHIP		R105-050-2 F	
Particulars	2022	General	General
Particulars	2022	arrangement	arrangement
Particulars	2022	Particulars	Particulars
Particulars	2022	Particulars	Particulars