



## M/V 'TITUS'

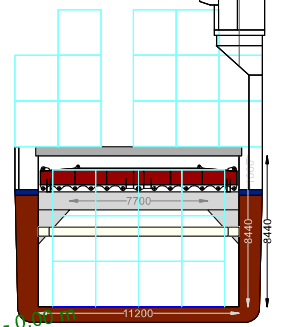
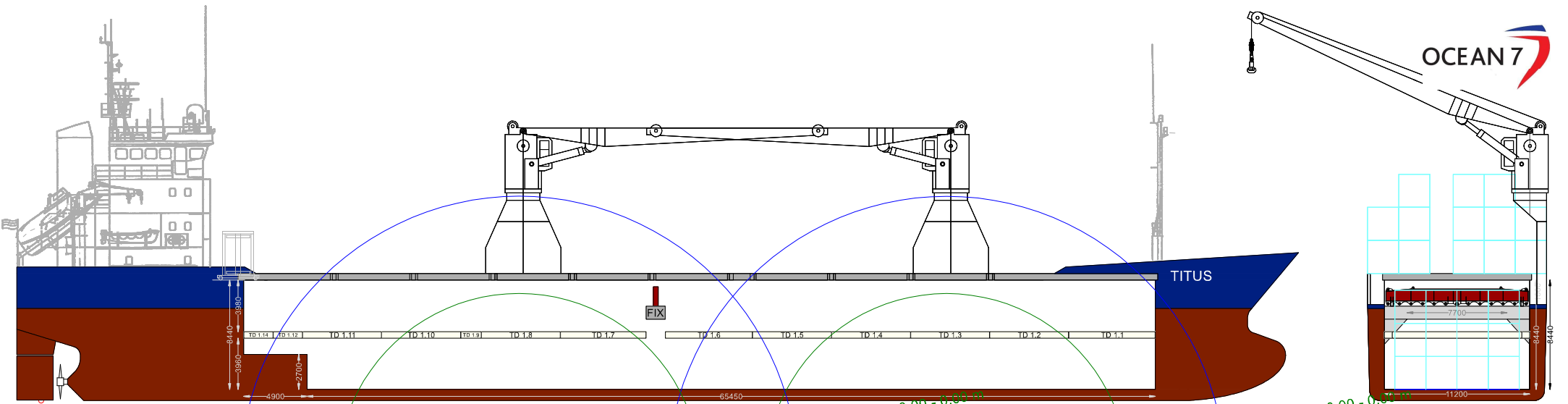
Valid as of 08 Oct 2024

<b>Registration</b>	
Call sign	ZDHI5
IMO number	9195470
Port of registry	Gibraltar
Flag state	Gibraltar
Shipyard	Rousse Shipyard
Year/Place of delivery	2006/Bulgaria
Class	DNV
Class notation	✕100 A5 E3 Multi-p. D/C-ship Equipped for contr. DBC Solas-II-2, Reg.19 G Strengthened f. heavy cargo ✕ MC E3 AUT
<b>P&amp;I Club</b>	UK P&I Club
<b>Tonnage</b>	
DWAT	4.325 mt
DWCC	Abt. 3.900 mt
Gross tonnage	3.198
Net tonnage	1.725
<b>Dimensions</b>	
Length over all	98,90 m
Length between p.p.	92,75 m
Breadth over all	13,80 m
Breadth moulded	13,80 m
Summer draught	5,74 m
Depth moulded	7,41 m
Height keel to top mast	30,20 m
<b>Hold/hatch sizes</b>	
Number of holds/hatches	1/1 (w/ 1 strong beam)
Hold capacity	About 6.374 m <sup>3</sup> /225.095 ft <sup>3</sup>
Hold dim. fwd of strong beam	38,05 x 11,20 m (narrow fwd to 5,00m)
Hold dim. aft of strong beam	31,60 x 11,20 m (narrow aft to 5,60 m)
Tween deck dim. (square)	57,15 x 11,20 m
Hatch cover dimensions	70,33 x 11,47 m
Hold height	8,44 m
Height below strong beam	5,42 (center)/3,50 (side) m
Height above/below TD	3,98/3,96 m
Floor below deck	1.490 m <sup>2</sup>
Deck floor surface	790 m <sup>2</sup>
<b>Container capacity</b>	
Hold capacity	120 TEU
Deck capacity	154 TEU (20 reefer)
Total	274 TEU*
	*10 TEU not reachable by own crane
Stack weight TEU/FEU	Tanktop: 72/90,5 mt Hatchcovers: 25/32 mt
TEU slots for IMO class 1.1-1.6	On deck + bay 01-07 below
IMO class 1.4S	All deck and hold

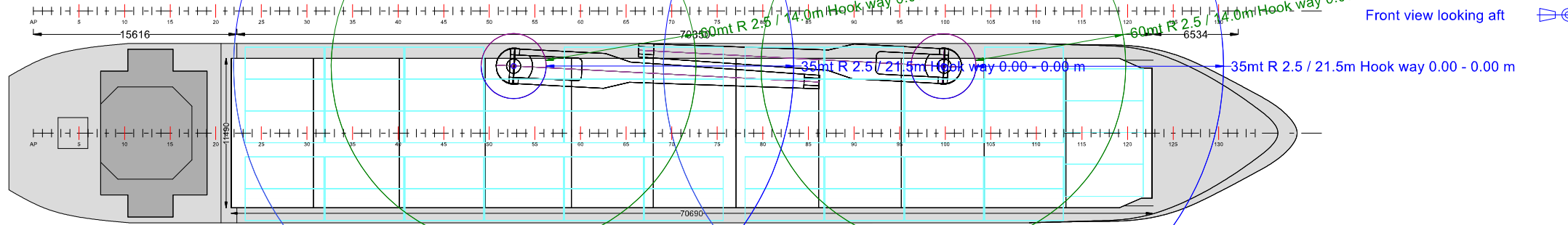
<b>Deck loads</b>	
Tanktop	15,0 mt/m <sup>2</sup>
Tween deck pontoons	2,50 mt/m <sup>2</sup>
Hatch covers	1,65 mt/m <sup>2</sup>
<b>Hatch covers/Tween deck</b>	
Type of hatch covers	All moveable by own gantry: 11 pontoons (Sequence open hatch cover: 2-4-6-8-10 and 1-3-5-7-9-11)
Tween deck pontoons	11 pontoons (4 can be used for erecting 2 grain bulkheads)
<b>Propulsion/Maneuvering</b>	
Main Engine	2.880 kW
Bow thruster	325 kW
Propeller	CPP
Rudder	Balanced
Service speed	12,0 kn
<b>Bunkers/Ballast capacity</b>	
Heavy fuel oil	275 m <sup>3</sup>
Marine gas oil	65 m <sup>3</sup>
Fresh water	42 m <sup>3</sup>
Ballast water	1.865 m <sup>3</sup>
<b>Cargo gear</b>	
Cranes on port side	2 x NMF x 60 mt SWL
Load/Outreach	60 mt/2,4-14,0 m 35 mt/2,4-21,5 m
Tandem load	120 mt SWL
Lifting beam on board	1 x 11,00 m WLL 125 mt 2 x 6,65 m WLL 60 mt
<b>Lifting heights</b>	
21,5 m outreach	17,0 m
14,0 m outreach	25,5 m
2,5 m outreach	31,0 m

*All details are believed to be correct but  
without guarantee/NN*

Phone: +45 70 70 13 11  
E-mail: europe@ocean7projects.com  
Web: <https://ocean7projects.com>



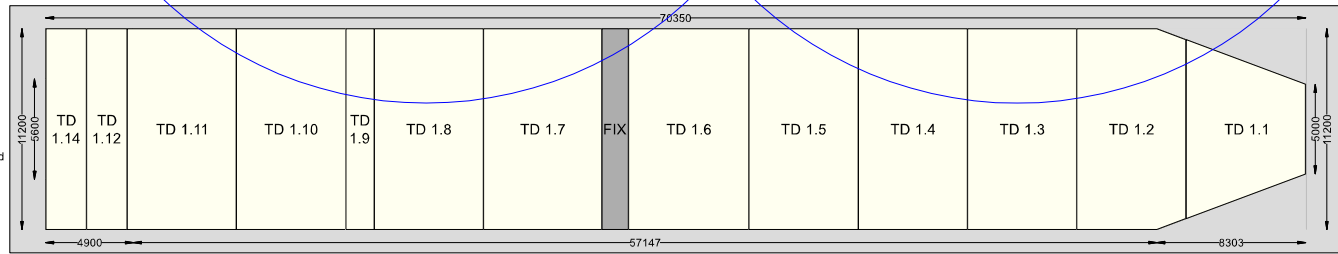
Front view looking aft



Top view at 20m ab Base line

Deck Strength Per Square Meter  
 Tank Top --- 15.0mt  
 Tween Deck --- 2.5mt  
 Hatch Cover --- 1.6mt

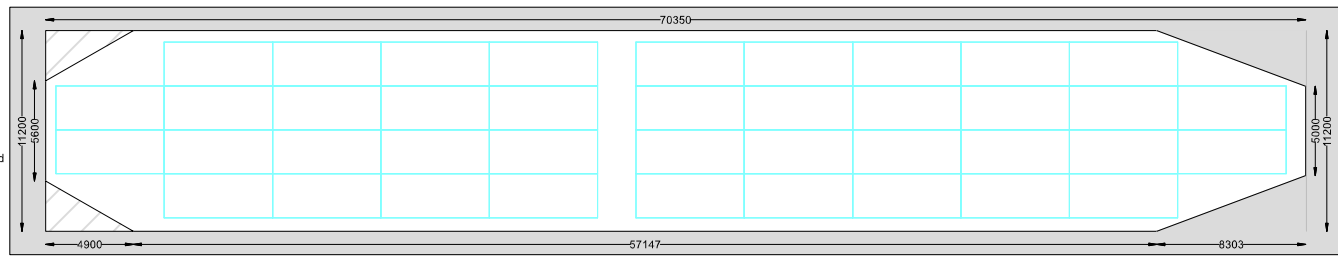
Container Intake  
 256 TEU Nominal  
 161 TEU at 14mt Homogeneously Loaded  
 20 Reefer Plugs On Deck



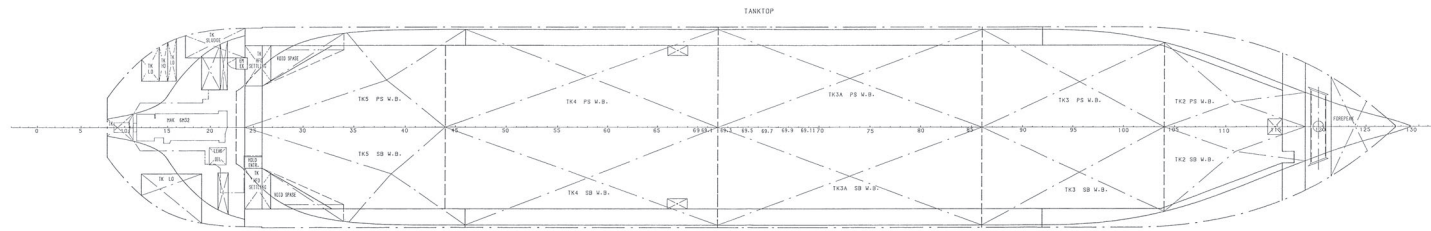
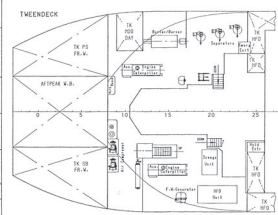
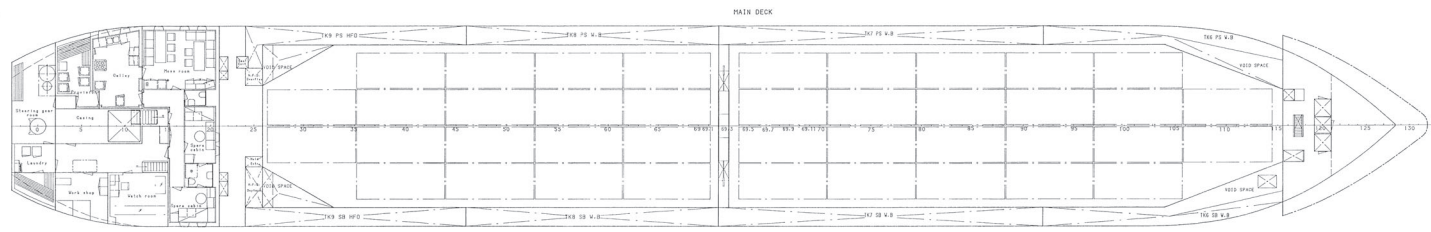
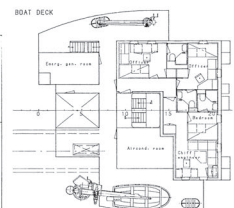
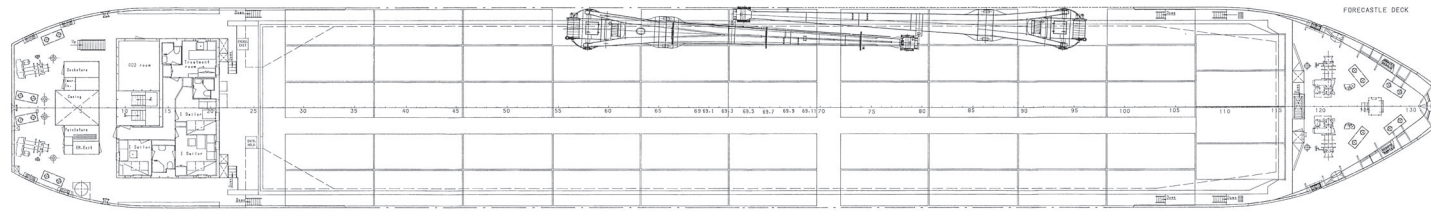
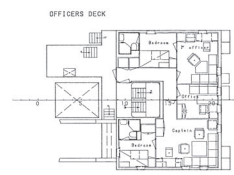
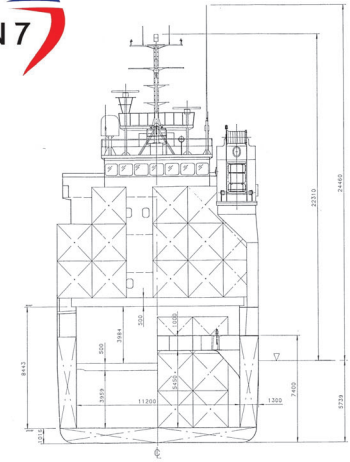
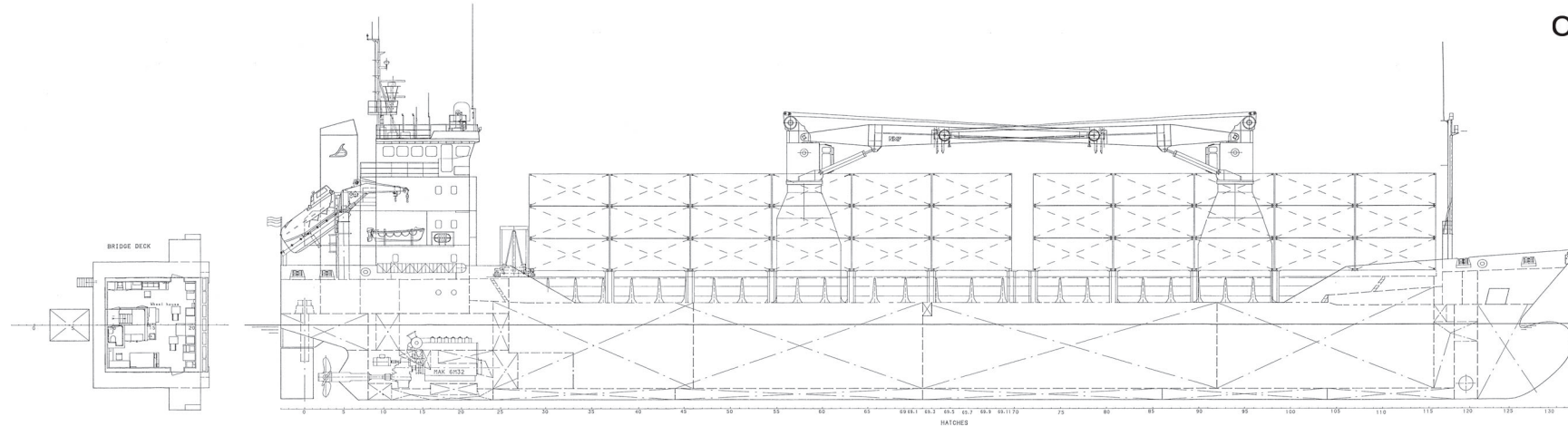
Top view at 6m ab Base line

Deck Strength Per Square Meter  
 Tank Top --- 15.0mt  
 Tween Deck --- 2.5mt  
 Hatch Cover --- 1.6mt

Container Intake  
 256 TEU Nominal  
 161 TEU at 14mt Homogeneously Loaded  
 20 Reefer Plugs On Deck



Top view at 4m ab Base line



PRINCIPAL PARTICULARS

LENGTH O.A.	98.80 M
LENGTH B.P.P.	92.50 M
BREADTH MLD.	13.50 M
DEPTH	7.40 M
DRAUGHT FRESHWATER	5.24 M
DISPLACEMENT	4310 TON
TONNAGE	3198 GT
HOLD CAPACITY	225100 COB. P.T.
SPEED	13.0 KNOTS
MAX. ENGINE	2880 KVA
CONTAINER CAP. (TYP. SINGAPORE)	256 TFC
FUEL OIL CAP. (M.F.S.)	274 M <sup>3</sup>
FRESHWATER	42 M <sup>3</sup>
WATERBALLAST	1875 M <sup>3</sup>
CLASS. CL. & LOGS	ICE E3.0 ■ HD AUT E3
TYPE OF CARGO HOLD	[1] [2] [3] [4]

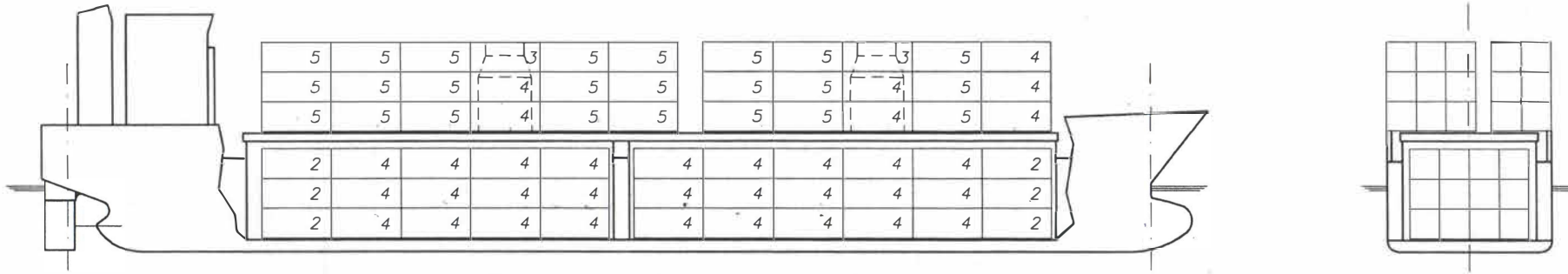
NO CARGO (NO HULL)

Particulars	2022
YTD No.	436

REGISTERED DRY CARGO MOTOR SHIP		R105-050-2 F	
Gen. Arr.	General	Owner	Next
Particulars	General	Particulars	General
Particulars	General	Particulars	General
Particulars	General	Particulars	General

# TITUS

21	19	17	15	13	11		09	07	05	03	01	20' BAY
20		16		12			08		04		-	40' BAY-DECK
-	18		14		10		06		-			40' BAY-HOLD



15	15	15	11	15	15		15	15	11	15	12	TEU	DECK	154
15		11(3)		15			15		11(3)		(12)	FEU (TEU)		67 (18)

6	12	12	12	12		12	12	12	12	12	6	TEU	HOLD	120
(6)	12		12			12		12		(18)		FEU (TEU)		48 (24)

CONTAINER CAPACITY	TEU	TOTAL	274
	FEU (TEU)		115 (42)