



M/V 'UAL Brazil'

Valid as of 15 Oct 2024

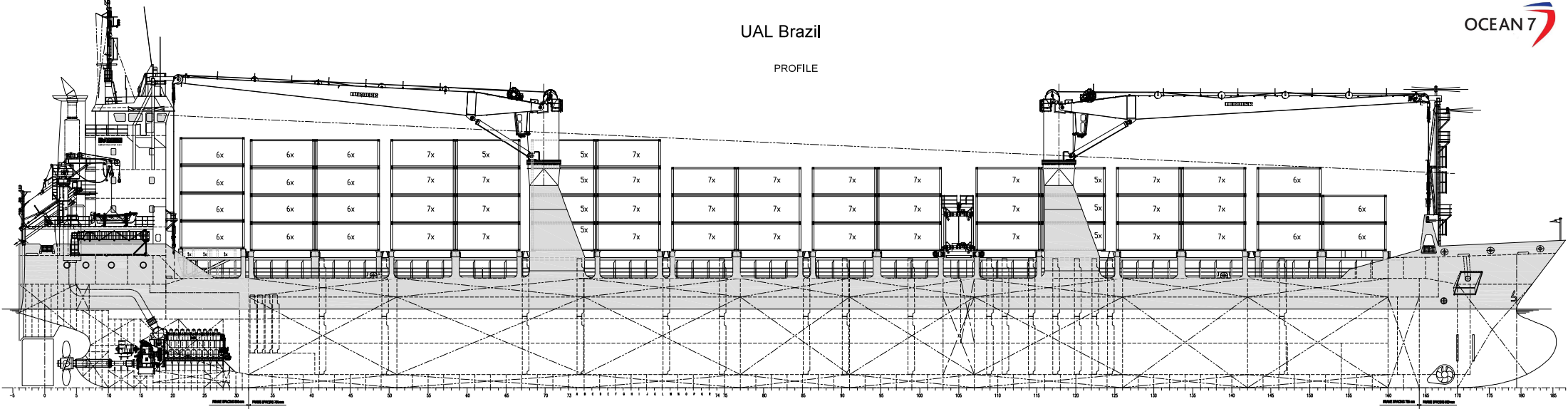
Registration	V2QD6
Call sign	9511636
IMO number	St. John's
Port of registry	Antigua & Barbuda
Flag state	Damen Shipyard
Shipyards	2010/Yichang
Year/Place of delivery	Bureau Veritas
Class	I <input checked="" type="checkbox"/> HULL <input checked="" type="checkbox"/> MACH, Gen.cargo ship -equip. for carr. of cont.;
Class notation	heavy cargo 196,1 kN/m ² Unreg.nav. <input checked="" type="checkbox"/> AUT-UMS, <input checked="" type="checkbox"/> SYS-NEQ-1, MON-SHAFT ICE CLASS IA
P&I Club	TBA
Tonnage	
DWAT	11.078 mt
DWCC	Abt. 10.200 mt
Gross tonnage	7.878
Net tonnage	3.909
Dimensions	
Length over all	145,63 m
Length between p.p.	138,82 m
Breadth over all	18,25 m
Breadth moulded	18,25 m
Summer draught	7,40 m
Depth moulded	10,30 m
Height keel to top mast	36,40 m
Hold/hatch sizes	
Number of holds/hatches	2/2
Hold capacity	About 14.807 m ³ /522.900 ft ³
#1 Lower hold dimensions	38,95 x 13,15/10,53/7,86 m
#1 Tween deck dimensions	38,96 x 13,15/7,86 m (fwd)
#1 Hatch cover dimensions	38,96 x 13,15/7,86 m (fwd)
#2 Lowre hold dimensions	65,42 x 13,15/7,86 m (aft)
#2 Tween deck dimension	65,42 x 13,15 m
#2 Hatch cover dimension	65,42 x 13,15 m
Tween deck -> Hatch cover	5,16 m
Tween deck -> Tank Top	5,23 m
Tank top surface	1.320 m ²
Tween deck surface	1.320 m ²
Hatch cover surface	1.379 m ²
Container capacity	
Hold capacity	302 TEU
Deck capacity	369 TEU (XX reefer)
Total	671 TEU
Stack weight TEU/FEU	Tanktop: 96/120 mt Hatch covers: 28/52 mt
TEU slots for IMO class 1.1-1.6	On deck only
1.4S	On deck and holds

Deck loads	
Tank top	20,0 0mt/m ²
Tween decks	3,50 mt/m ²
Hatch covers	1,75 mt/m ²
Hatch covers/Tween deck	Operated by vessel's gantry crane:
Type of hatch covers	6 + 10 pontoons
Tween deck pontoons	8 + 12 pontoons
Grain bulkheads	#1: 8 positions (by two TD) #2: 9 positions (by two TD)
Propulsion/Maneuvering	
Main Engine	4.320 kW
Bow thruster	TBA
Propeller	Balanced
Rudder	CPP
Service speed	13,5 kn
Bunkers/Ballast capacity	
Heavy fuel oil	654 m ³
Marine gas oil	79 m ³
Fresh water	75 m ³
Ballast water	5.038 m ³
Cargo gear	
Cranes on stbd side	2 x Liebherr x 80 mt SWL
Load/Outreach	80 mt/3,50 – 14,00 m 60 mt/3,50 – 16,00 m 40 mt/3,50 – 28,00 m 32 mt/3,50 – 34,00 m
Tandem load	160 mt SWL
Lifting beam on board	1 x 21.7 m x WLL 150 mt
Spreader beams on board	2 x 4.20 m x WLL 80 mt 2 x 6,70 m x WLL 80 mt

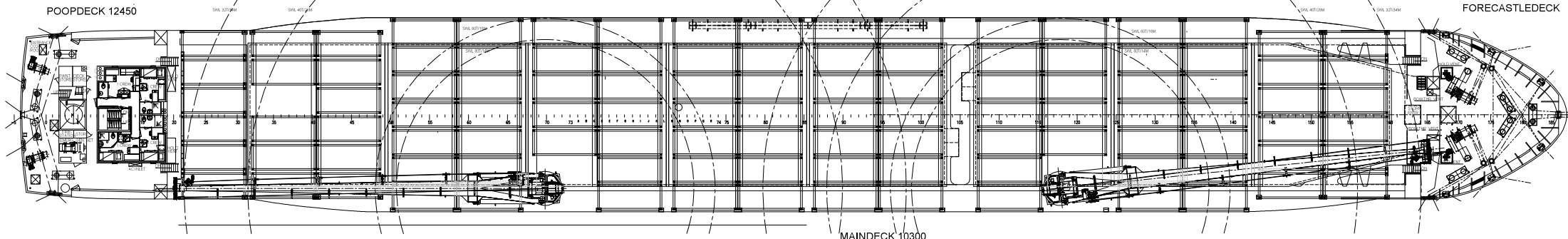
All details are believed to be correct but without guarantee/HWS

Phone: +45 70 70 13 11
E-mail: europa@ocean7projects.com
Web: <https://ocean7projects.com>

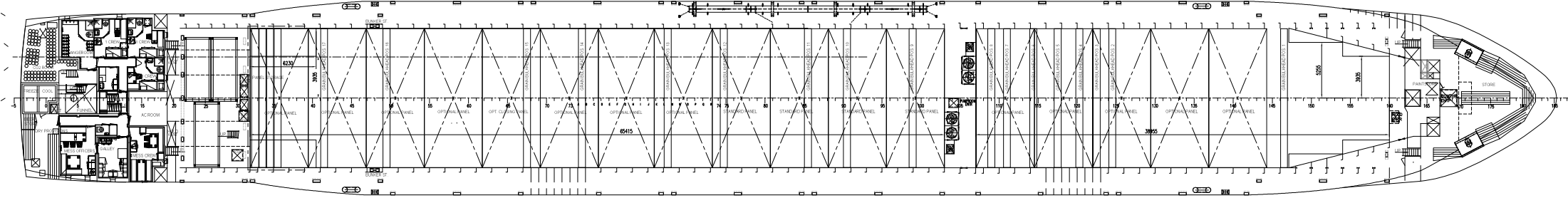
PROFILE



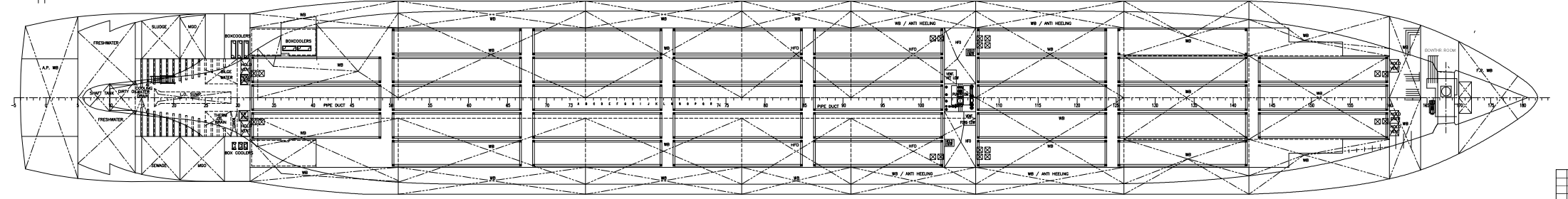
HATCHES



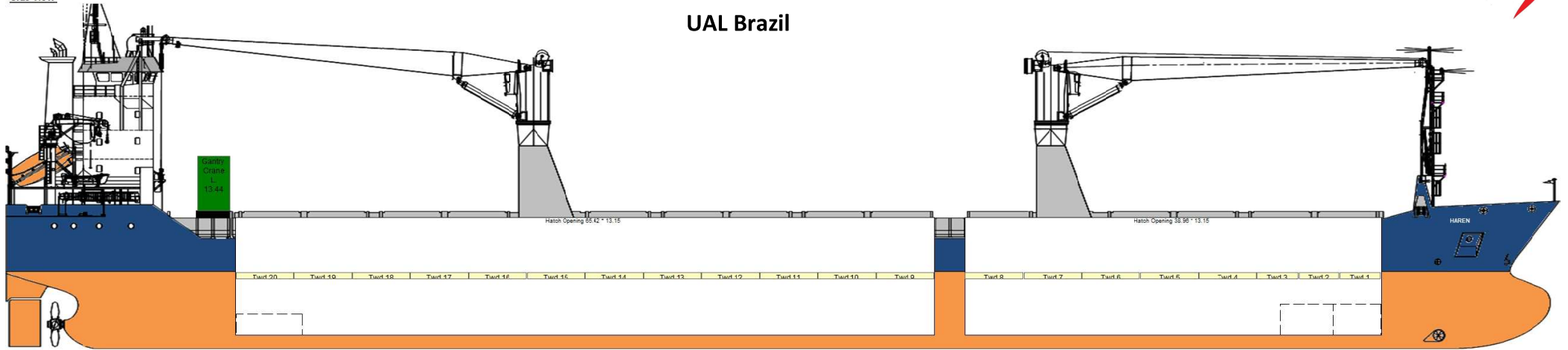
MAINDECK 10300



TANKTOP 1250

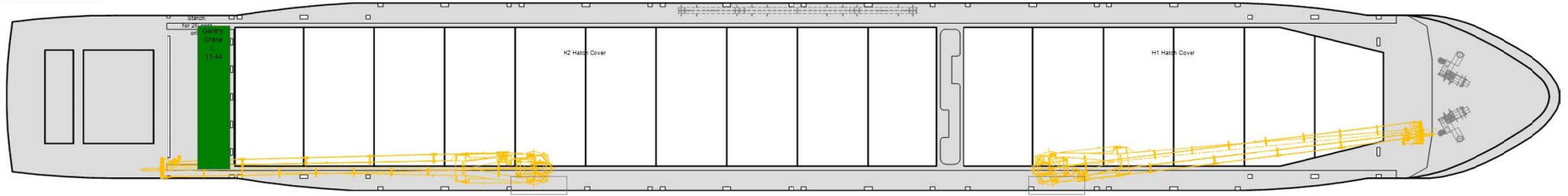


Side view



AP Frames

Top view Main Deck



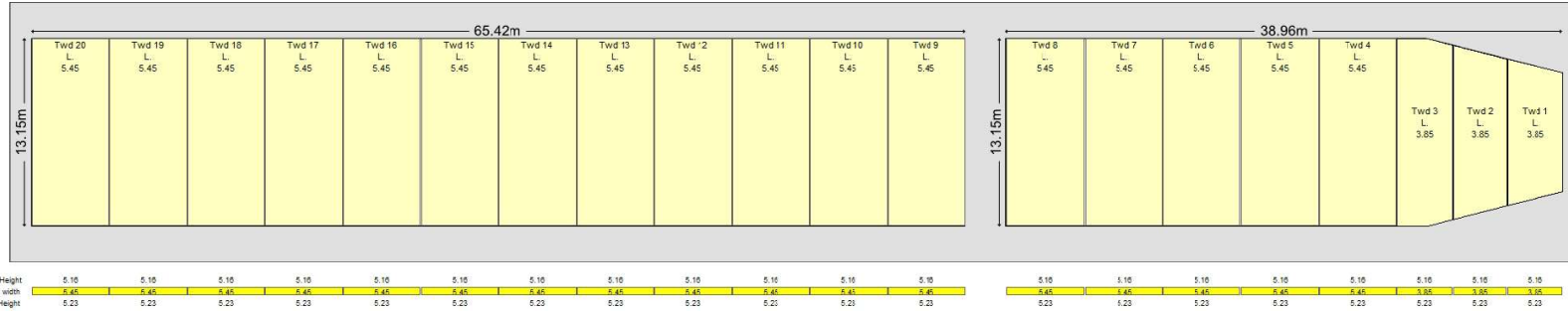
AP Frames

Top view Tweendeck

Container Intake
Hold 302
Deck 369

Total 671
(60 Reefer Plugs on Main Deck)

Stack Weights 20' 40'
Deck 28mt 48mt
Hold 100mt 140mt



Uniform Load
Hatch Cover 1.75mt/m2
Tween Deck 3.50mt/m2
Tank Top 20.00mt/m2

Cranes 1 & 2 Range (80mt SWL)
80t / 3.5 - 14.0m
60t / 3.5 - 16.0m
40t / 3.5 - 28.0m
32t / 3.5 - 34.0m

Top view Tank Top

