



M/V 'UNISTAR'

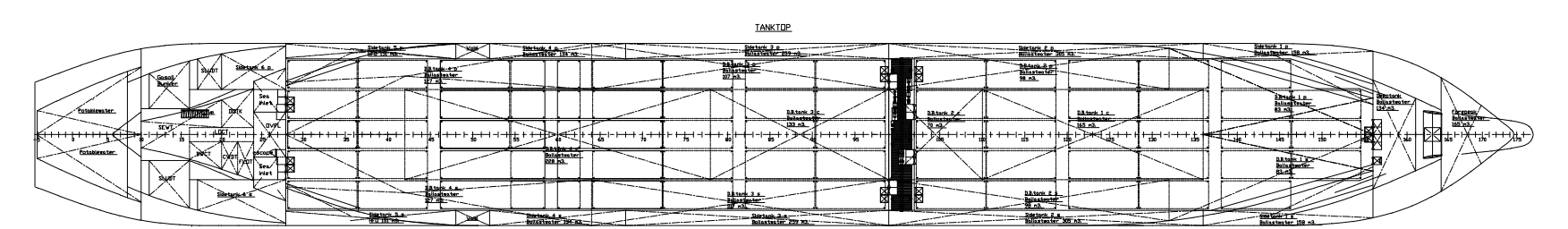
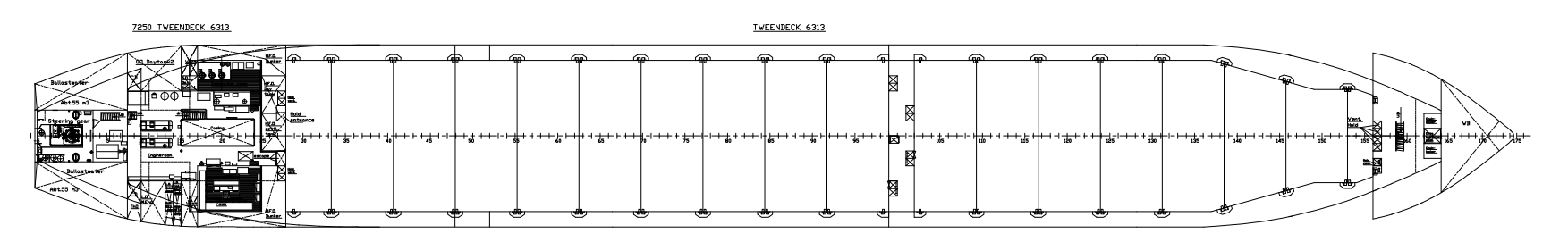
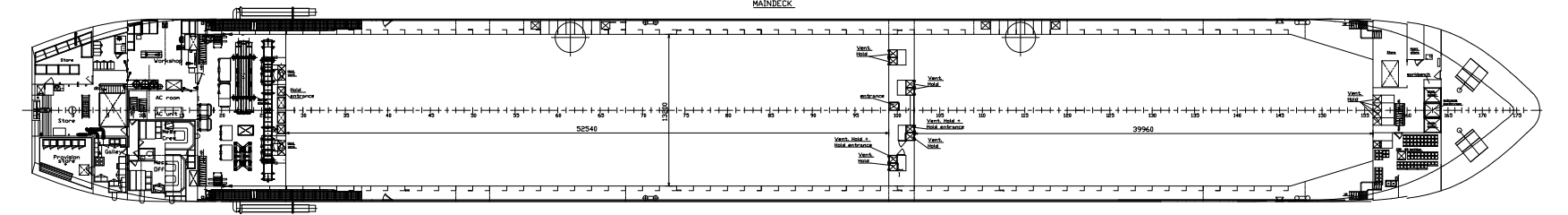
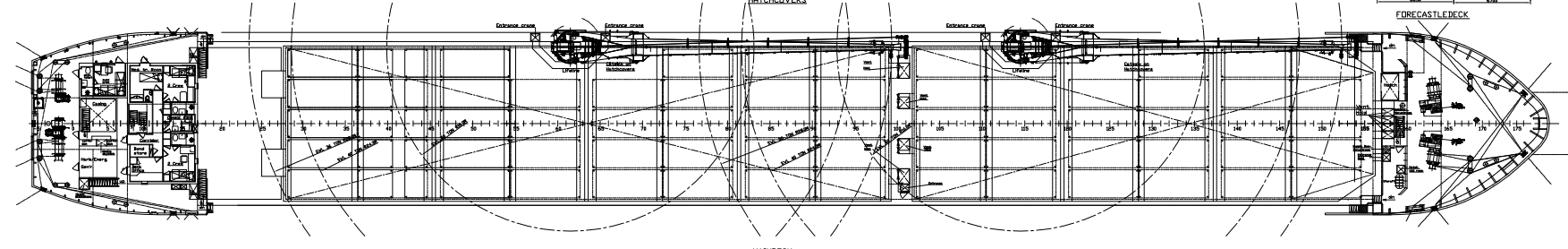
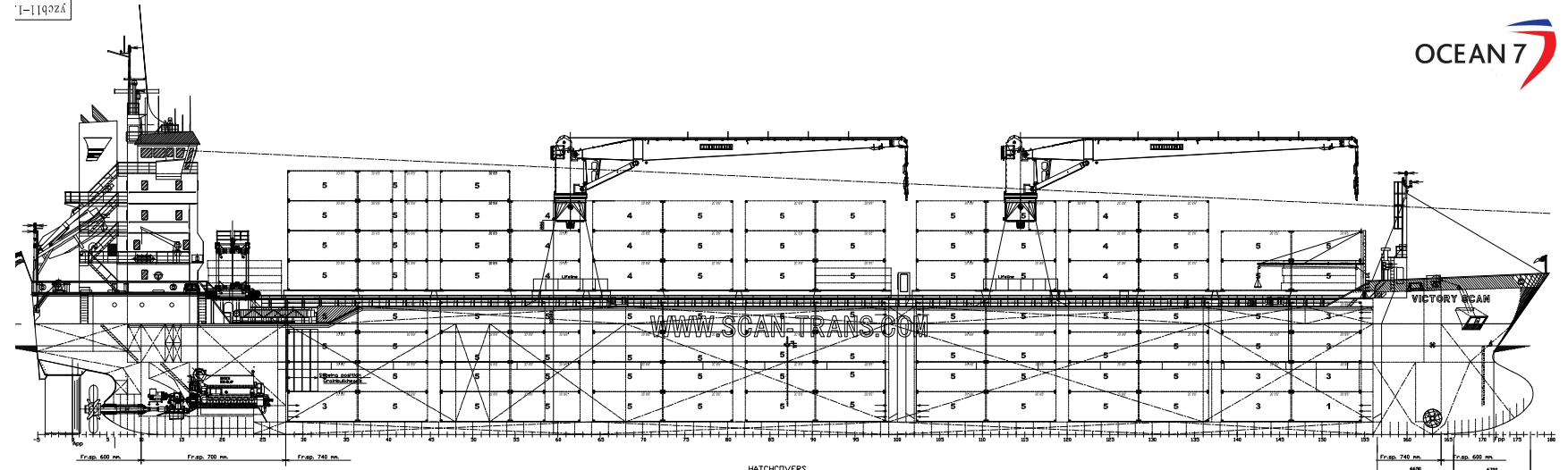
Valid as of 02 Mar

Registration	
Call sign	V2FW7
IMO number	9559901
Port of registry	St. John's
Flag state	Antigua & Barbuda
Shipyard	Jiangsu Yangzi Changbo Shipy
Year/Place of delivery	2012/China
Class	Bureau Veritas
Class notation	I ✕ HULL ✕ MACH, General cargo ship – equip. for carr. of contr. Unrestricted nav. heavycargo 147,1 kN/m ² ✕ AUT_UMS Ice class IA
P&I Club	The London P&I Club
Tonnage	
DWAT	9.688 mt
DWCC	Abt. 8.800 mt
Gross tonnage	6.351
Net tonnage	3.617
Dimensions	
Length over all	132.20 m
Length between p.p.	124.56 m
Breadth over all	15.87 m
Breadth moulded	15.87 m
Summer draught	7,78 m
Depth moulded	9,65 m
Height keel to top mast	35,50 m
Hold/hatch sizes	
Number of holds/hatches	2/2
#1 Hold capacity	Abt. 5.028 m ³ /177.562 ft ³
#2 Hold capacity	Abt. 7.011 m ³ /247.591 ft ³
#1 hold	39,96 x 13,20 m (narrow fwd)
#2 hold	52,54 x 13,20 m
Hold height	10,85 m
Height above/below TD:	5,59/4,55 m
Tank top surface	471 m ² + 678 m ²
Tween deck surface	505 m ² + 693 m ²
Hatch cover surface	546 m ² + 717 m ²
Container capacity	
Hold capacity	258 TEU
Deck capacity	210 TEU (20 reefer)
Total	468 TEU
Stack weight TEU/FEU	Tanktop: 90/100 mt Hatch Covers: 25/40 mt
IMDG class 1.1-1.6	Hold 1, Bay 1,3,5 and on deck
Class 1.4S	In holds and on deck

Deck loads	
Tank top	15,00 mt/m ² uniform 20,00 mt/m ² locally
Tween deck pontoons	3,50 mt/m ²
Hatch covers	1,75 mt/m ²
Hatch covers/Tween deck	
Type of hatch covers	6 + 8 pontoons moveable by own gantry crane
Tween deck pontoons	8 + 10 pontoons
Propulsion/Maneuvering	
Main Engine	4.000 kW
Shaft generator	694 kW
Bow thruster	500 kW
Rudder	Balanced Type
Propeller	CPP
Service speed	12,0 kn
Bunkers/Ballast capacity	
VLSFO	376 m ³ (90% cap.)
MGO LS	122 m ³ (90% cap.)
Fresh water	72 m ³
Ballast water	3.550 m ³
Cargo gear	
Cranes on port side	2 x Liebherr x 60 mt SWL
Load/Outreach	60 mt/3,0-16,0 m 40 mt/3,0-24,0 m 36 mt/3,0-28,0 m
Tandem load	110 mt SWL
Lifting beam on board	One x 12,5 m x WLL 120 mt
Traverse on board	Two x 4,1 m x WLL 60 mt
Distance pipes	Three x 6,3 m x WLL 120 mt
Lifting heights	
At 1,8 m outreach	36,7 m
At 16,0 m outreach	32,1 m
At 24,0 m outreach	23,8 m
At 28,0 m outreach	15,5 m

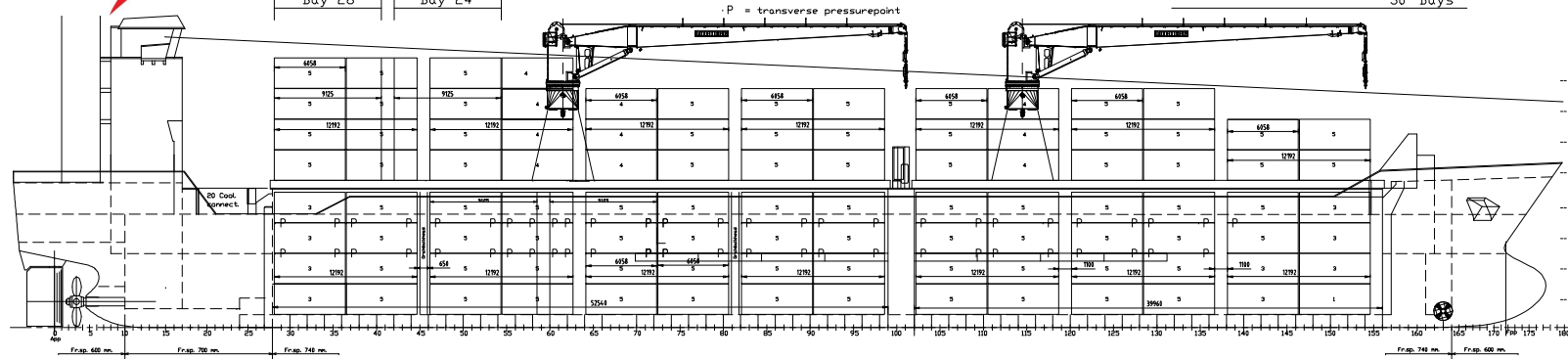
All details are believed to be correct but without guarantee/HWS

Phone: +45 70 70 13 11
E-mail: europa@ocean7projects.com
Web: <https://ocean7projects.com>



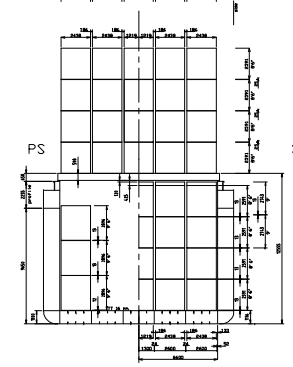


Bay 27 | Bay 25 | Bay 23 | Bay 21 | Bay 19 | Bay 17 | Bay 15 | Bay 13 | Bay 11 | Bay 9 | Bay 7 | Bay 5 | Bay 3 | Bay 1 | 20' Bays
 Bay 26 | Bay 22 | Bay 18 | Bay 14 | Bay 10 | Bay 6 | Bay 2 | 40' Bays
 Bay 28 | Bay 24 | 30' Bays



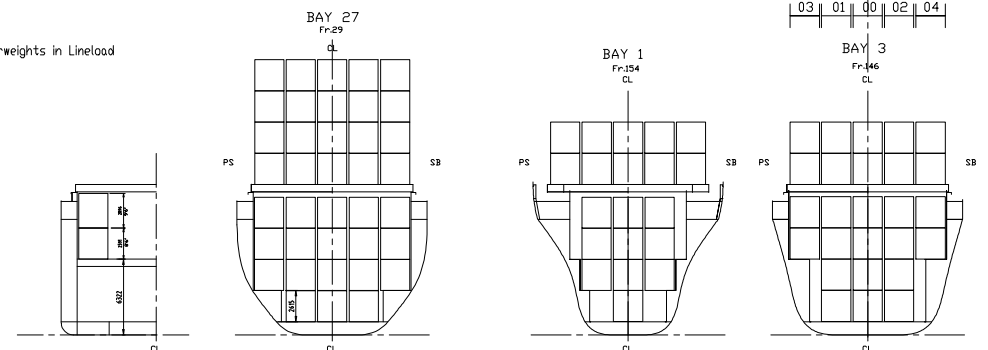
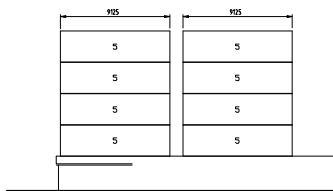
RDW RDW RDW RDW RDW
03 | 01 | 00 | 02 | 04

-- 19 TEU TIER 88
 -- 37 TEU TIER 86
 -- 47 TEU TIER 84
 -- 47 TEU TIER 82
 -- 48 TEU TIER 08
 -- 48 TEU TIER 06
 -- 48 TEU TIER 04
 -- 48 TEU TIER 02

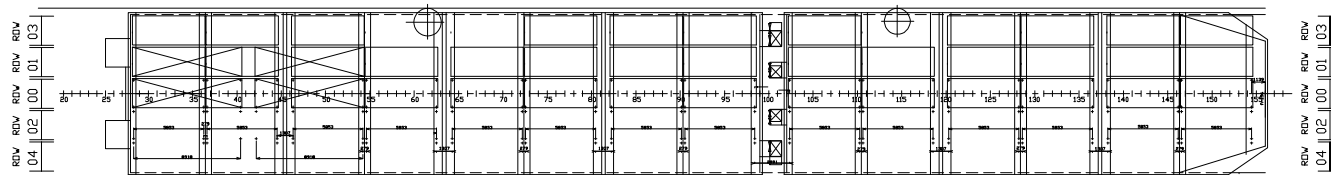


Containers 20 Ft.Max. 90 Tonnes (4 Containers Pointload)
 Containers 30 Ft.Max. 100 Tonnes (4 Containers Pointload)
 Containers 40 Ft.Max. 100 Tonnes (4 Containers Pointload)

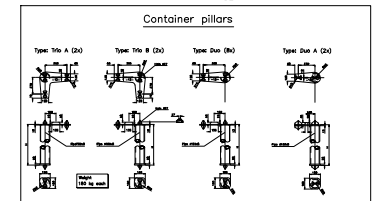
The hatchcovers are suitable for the following containerweights in Lineload
 20' Containers (ISD) 25 tonnes.
 30' Containers (ISD) 37.5 tonnes.
 40' Containers (ISD) 40 tonnes.



HATCHCOVERS



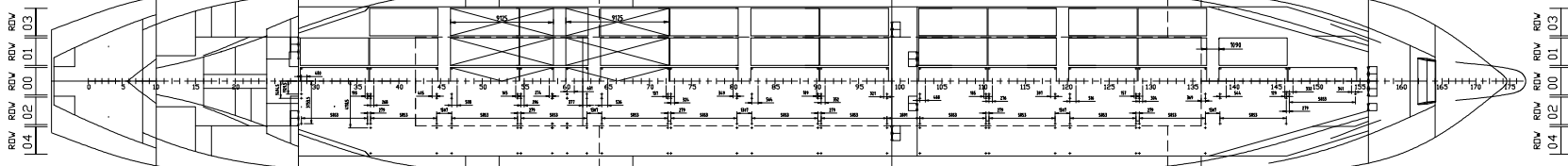
TANKTOP



CONTAINER DIMENSIONS



TYPE A (20')	TYPE B (20')	TYPE C (20')	TYPE D (20')
TYPE A (30')	TYPE B (30')	TYPE C (30')	TYPE D (30')
TYPE A (40')	TYPE B (40')	TYPE C (40')	TYPE D (40')



Volharding SHIPARCH

CONTAINER PLAN

Client: Ocean 7	Scale: 1:50	Date: 11-07-06	Yacht: V099-792
Project: Container Plan	Drawn by: U.Polster	Checked by:	Design: V0022